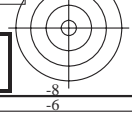
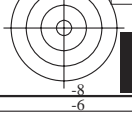
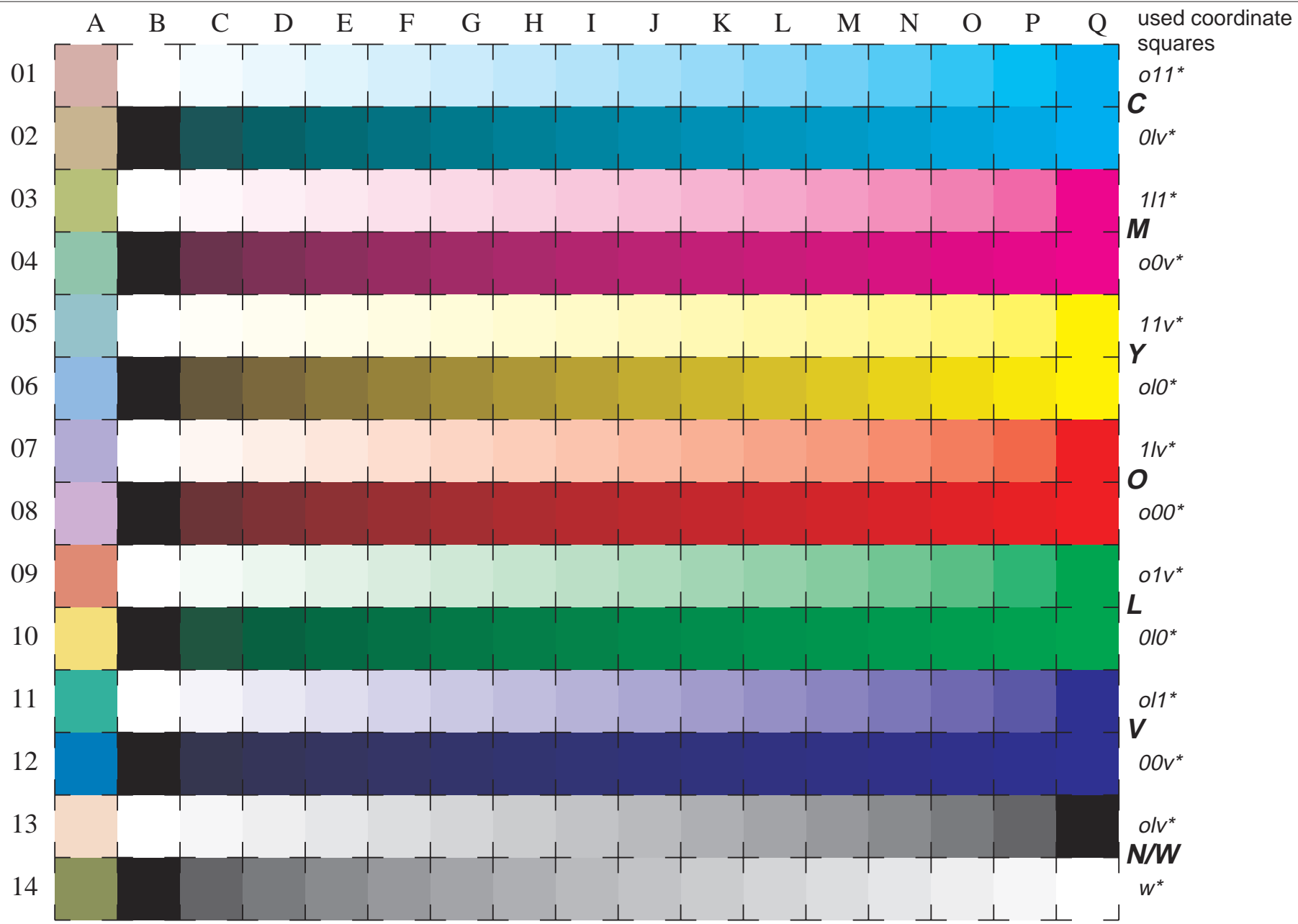


See for similar files: <http://www.ps.bam.de/LE31/10Q/Q31E00FP.PS/.PDF>
 Information and Order: <http://www.ps.bam.de/LE31/10Q/Q31E00FP.PS/.PDF>
 Version 2.0, io=1,0; iTLS; oTLS, CIELAB

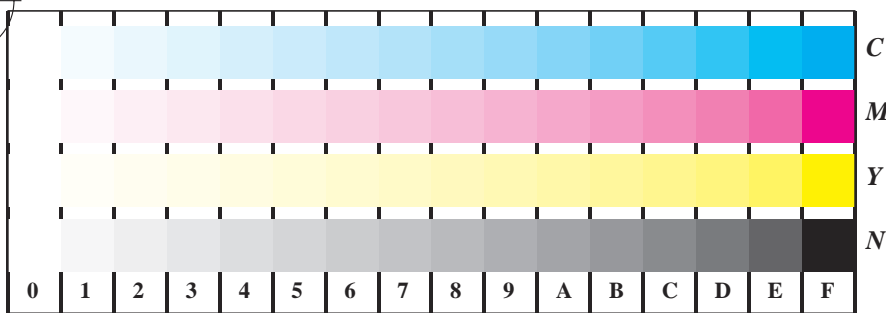
BAM registration: 20030101-LE31/10Q/Q31E00FP.PS/.PDF BAM material: code=th4ta
 application for measurement of monitor (Yr=2.5) and printer output



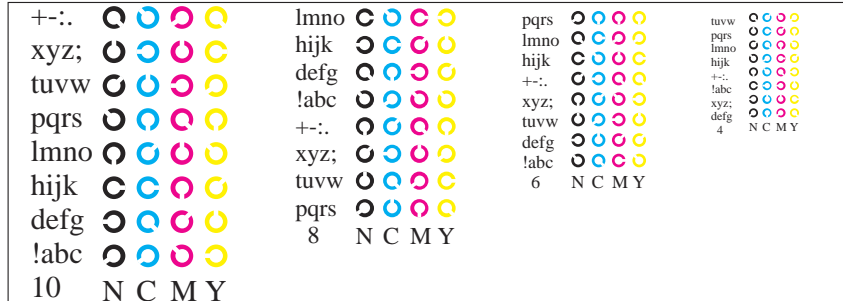
16 equidistant CIELAB steps: C-W, C-N, M-W, M-N, Y-W, Y-N, O-W, O-N, L-W, L-N, V-W, V-N, N-W ($o1v^*$), W-N (w^*) and 14 CIE-test colours (left)

Test chart LE31: 16 CIELAB steps of ISO/IEC 15775 input(TLS00): $o1v^*$ setrgbcolor
 Chromatic-White, Chromatic-Black, Black-White output(TLS00): $cmY0^*$ / $000n^*$ setcmykcolor

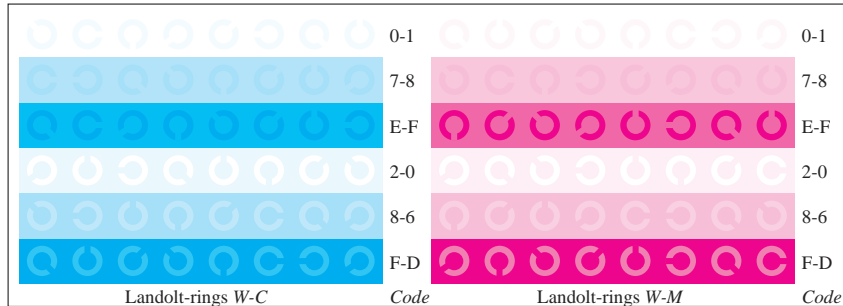




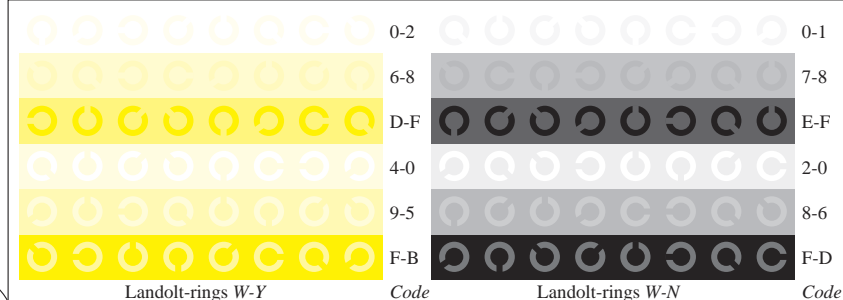
Picture B4w: 16 equidistant steps *W-C*, *W-M*, *W-Y* and *W-N*; PS operator *olv* setrgbcolor* (only)



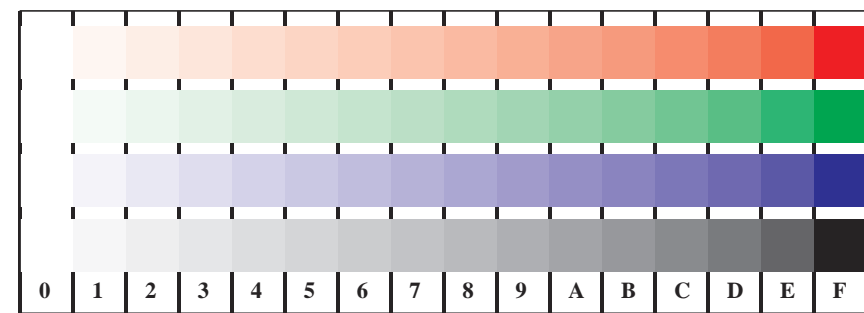
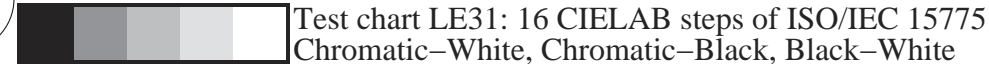
Picture B5w: Script and Landolt-rings *N*, *M*, *C* and *Y*; PS operator *olv* setrgbcolor* (only)



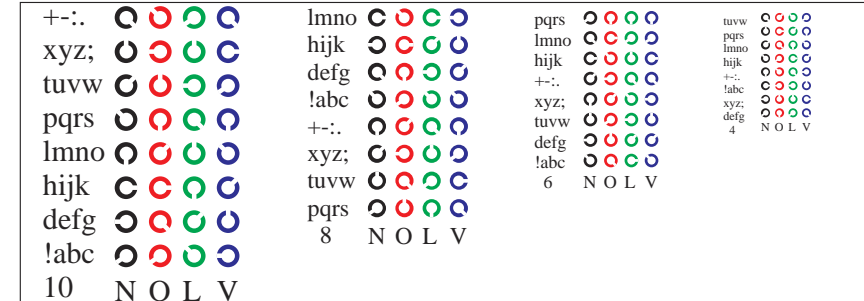
Picture B6w: Landolt-rings *W-C* and *W-M*; PS operator *olv* setrgbcolor* (only)



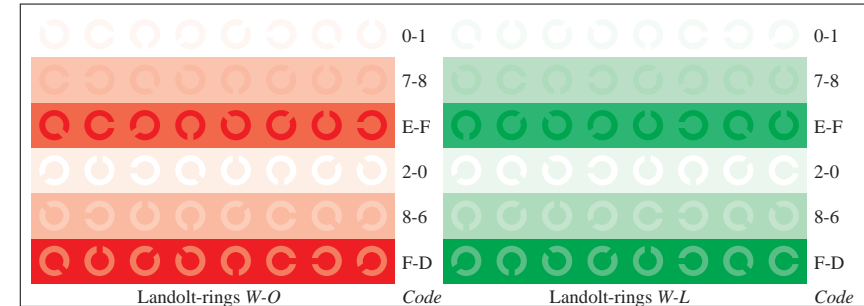
Picture B7w: Landolt-rings *W-Y* and *W-N*; PS operator *olv* setrgbcolor* (only)



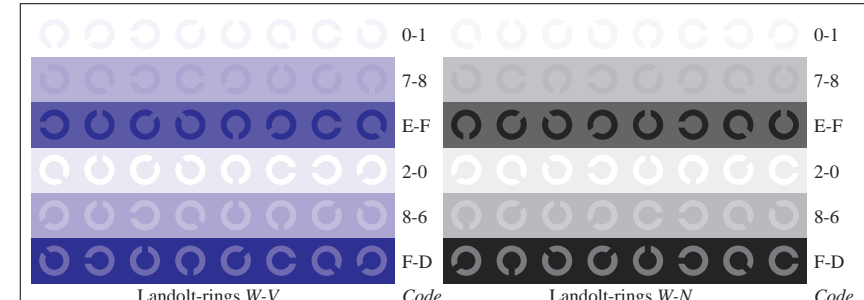
Picture D4w: 16 equidistant steps *W-O*, *W-L*, *W-V* and *W-N*; PS operator *olv* setrgbcolor / w* setgray*



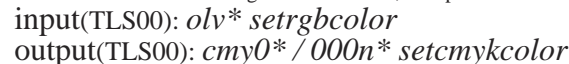
Picture D5w: Script and Landolt-rings *N*, *O*, *L* and *V*; PS operator *olv* setrgbcolor / w* setgray*



Picture D6w: Landolt-rings *W-O* and *W-L*; PS operator *olv* setrgbcolor / w* setgray*



Picture D7w: Landolt-rings *W-V* and *W-N*; PS operator *olv* setrgbcolor / w* setgray*

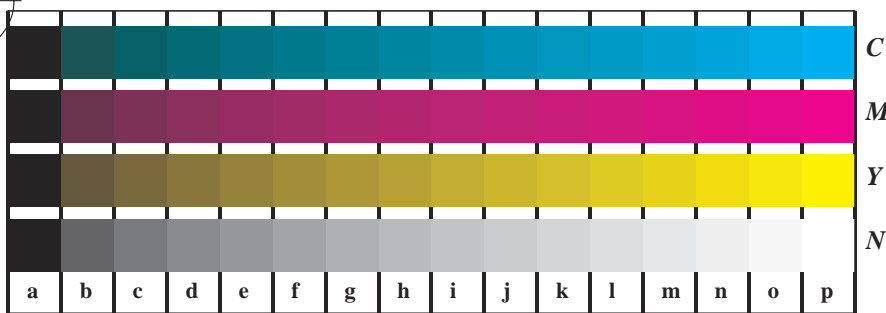


See for similar files: <http://www.ps.bam.de/LE31/10Q/Q31E10FP.PS/.PDF>; linearized output
 Information and Order: <http://www.ps.bam.de>

Version 2.0, io=1,0; iTLS; oTLS; CIILAB

BAM registration: 20030101-LE31/10Q/Q31E10FP.PS/.PDF
 application for measurement of monitor (Yr=2.5) and printer output

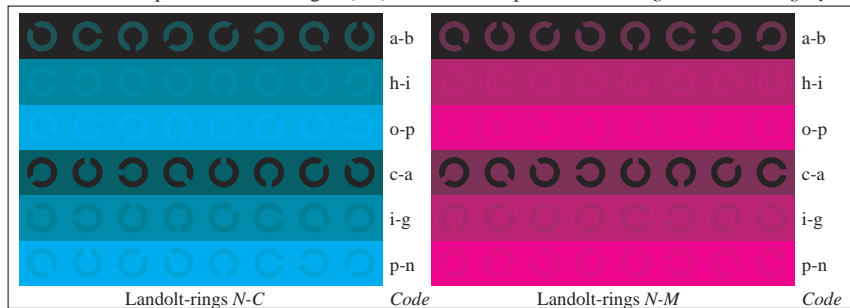
BAM material: code=th4ta



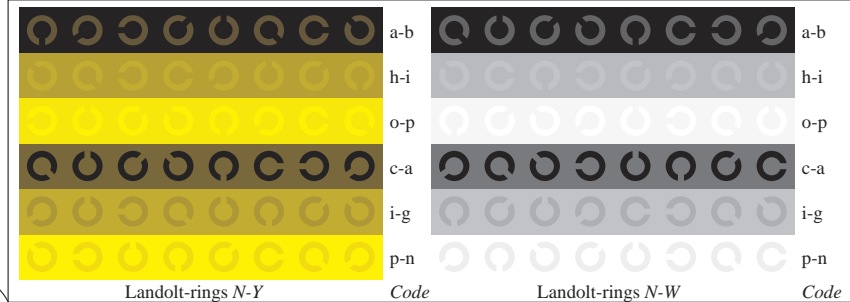
Picture B4n: 16 equidistant steps *N-C*, *N-M*, *N-Y* and *N-W*; PS operator *olv* setrgbcolor / w* setgray*



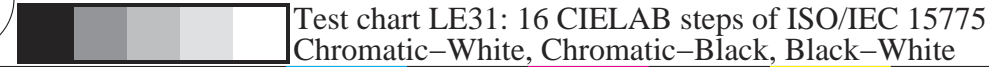
Picture B5n: Script and Landolt-rings *W*, *M*, *C* and *Y*; PS operator *olv* setrgbcolor / w* setgray*



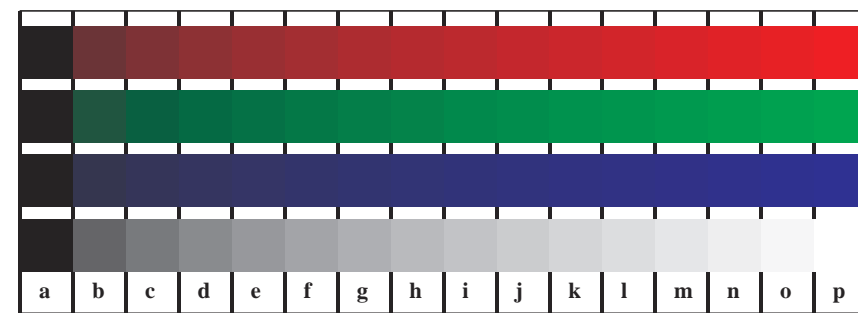
Picture B6n: Landolt-rings *N-C* and *N-M*; Use of PS operator *olv* setrgbcolor / w* setgray*



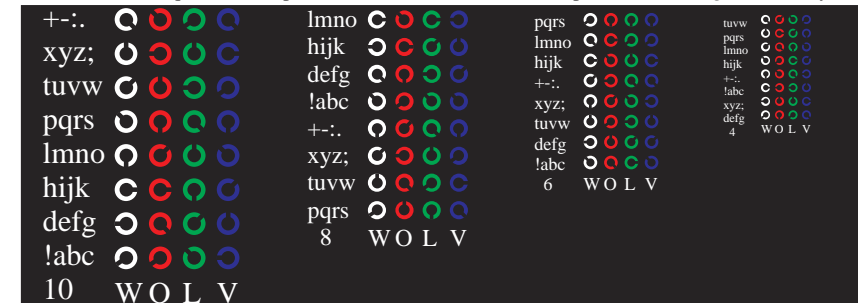
Picture B7n: Landolt-rings *N-Y* and *N-W*; PS operator *cmY0* / 000n* setcmYcolor*



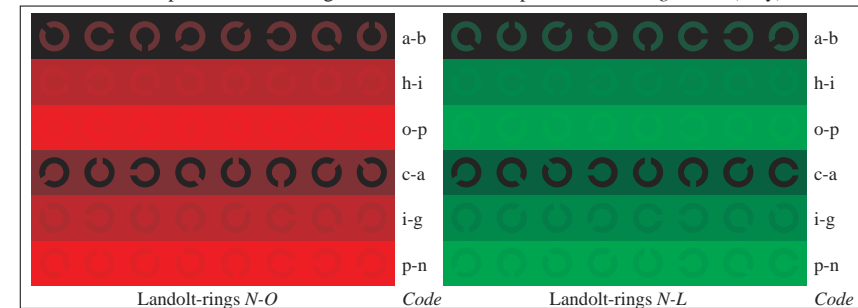
Test chart LE31: 16 CIELAB steps of ISO/IEC 15775
 Chromatic-White, Chromatic-Black, Black-White



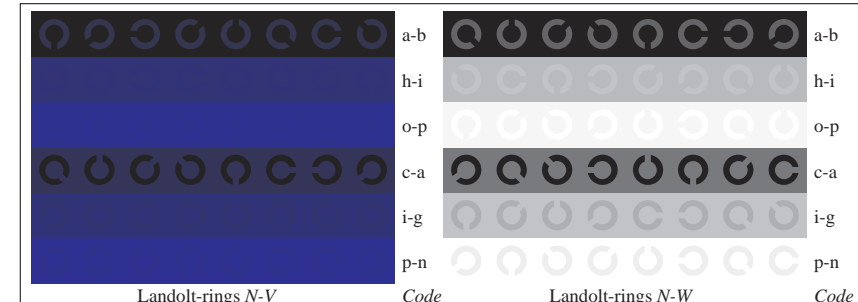
Picture D4n: 16 equidistant steps *N-O*, *N-L*, *N-V* and *N-W*; PS operator *olv* setrgbcolor* (only)



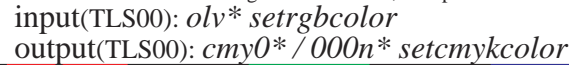
Picture D5n: Script and Landolt-rings *W*, *O*, *L* and *V*; PS operator *olv* setrgbcolor* (only)



Picture D6n: Landolt-rings *N-O* and *N-L*; Use of PS operator *olv* setrgbcolor* (only)



Picture D7n: Landolt-rings *N-V* and *N-W*; PS operator *olv* setrgbcolor* (only)

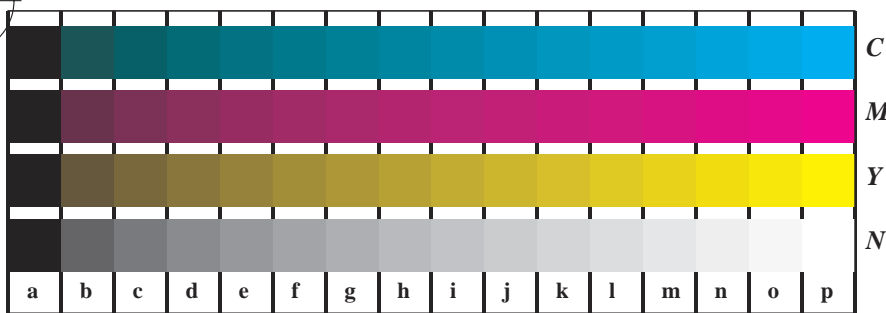


input(TLS00): *olv* setrgbcolor*
 output(TLS00): *cmY0* / 000n* setcmYcolor*

See for similar files: <http://www.ps.bam.de/LE31/LE31.HTM>
 Information and Order: <http://www.ps.bam.de>

Version 2.0, io=1,0; iTLS; oTLS, CIELAB

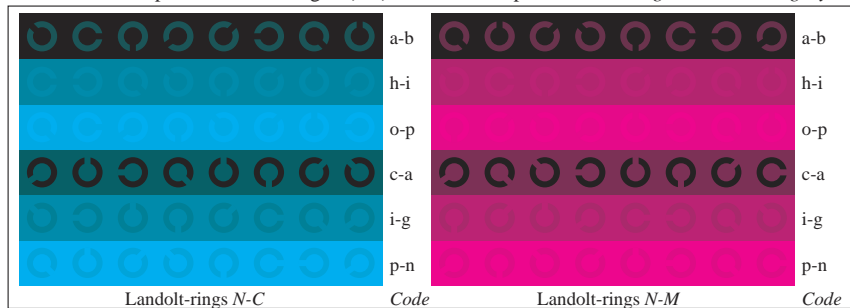
BAM registration: 20030101-LE31/10Q/Q31E20FP.PS/.PDF BAM material: code=th4t4
 application for measurement of monitor (Yr=2.5) and printer output



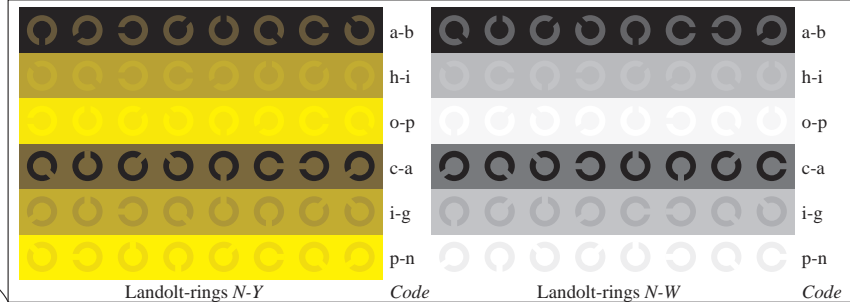
Picture B4n: 16 equidistant steps *N-C*, *N-M*, *N-Y* and *N-W*; PS operator *olv* setrgbcolor / w* setgray*



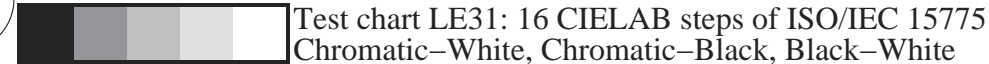
Picture B5n: Script and Landolt-rings *W*, *M*, *C* and *Y*; PS operator *olv* setrgbcolor / w* setgray*



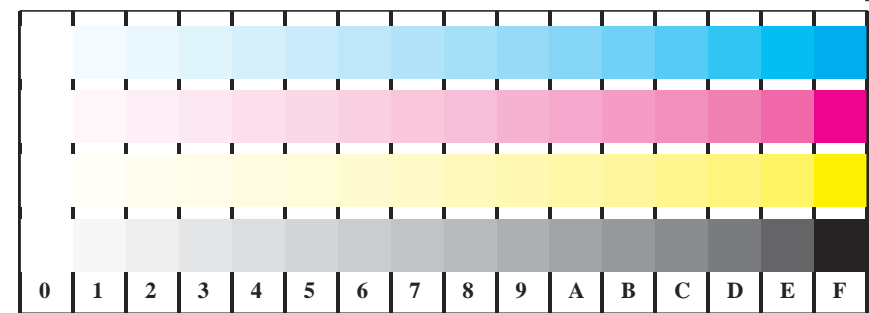
Picture B6n: Landolt-rings *N-C* and *N-M*; Use of PS operator *olv* setrgbcolor / w* setgray*



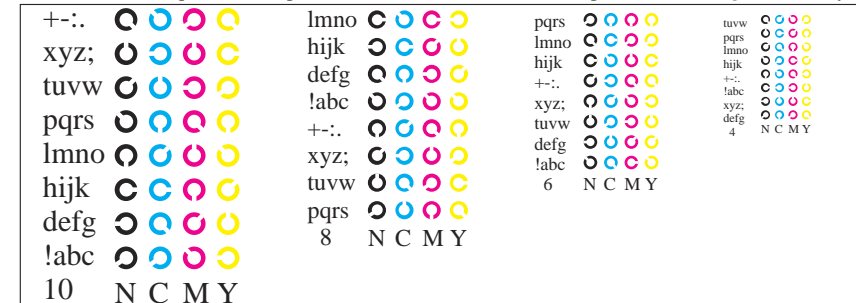
Picture B7n: Landolt-rings *N-Y* and *N-W*; PS operator *olv* setrgbcolor / w* setgray*



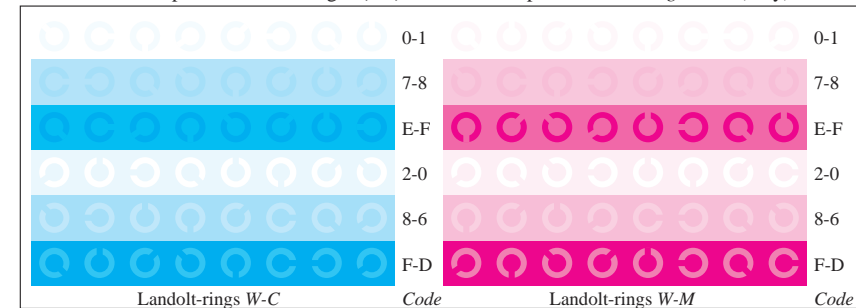
Test chart LE31: 16 CIELAB steps of ISO/IEC 15775
 Chromatic-White, Chromatic-Black, Black-White



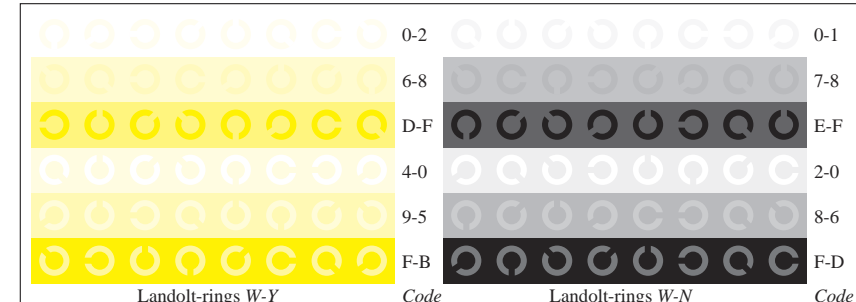
Picture B4w: 16 equidistant steps *W-C*, *W-M*, *W-Y* and *W-N*; PS operator *olv* setrgbcolor* (only)



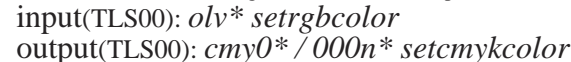
Picture B5w: Script and Landolt-rings *N*, *M*, *C* and *Y*; PS operator *olv* setrgbcolor* (only)



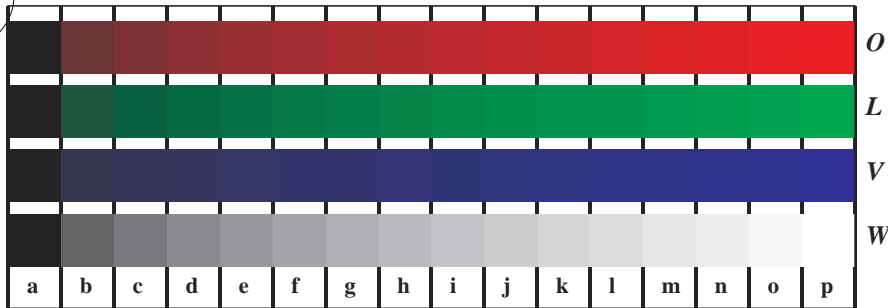
Picture B6w: Landolt-rings *W-C* and *W-M*; PS operator *olv* setrgbcolor* (only)



Picture B7w: Landolt-rings *W-Y* and *W-N*; PS operator *olv* setrgbcolor* (only)



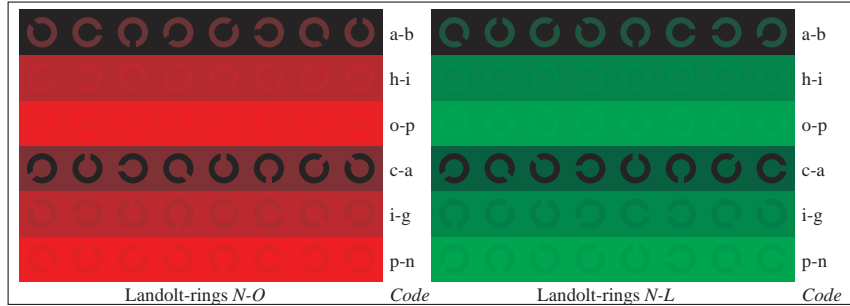
input(TLS00): *olv* setrgbcolor*
 output(TLS00): *cmy0* / 000n* setcmykcolor*



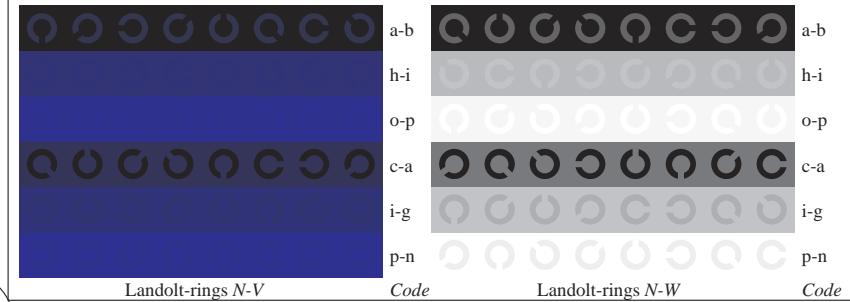
Picture D4n: 16 equidistant steps *N-O*, *N-L*, *N-V* and *N-W*; PS operator *olv* setrgbcolor* (only)



Picture D5n: Script and Landolt-rings *W*, *O*, *L* and *V*; PS operator *olv* setrgbcolor* (only)



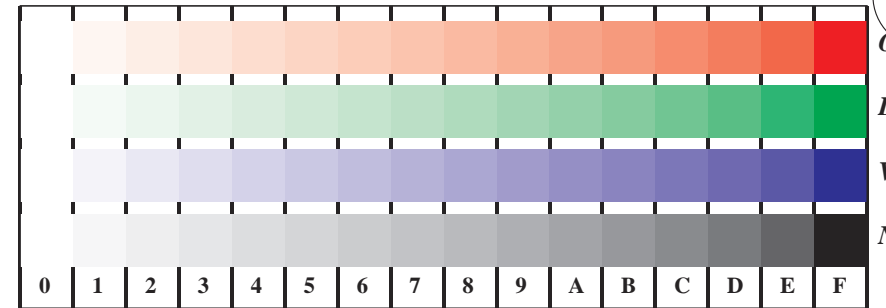
Picture D6n: Landolt-rings *N-O* and *N-L*; Use of PS operator *olv* setrgbcolor* (only)



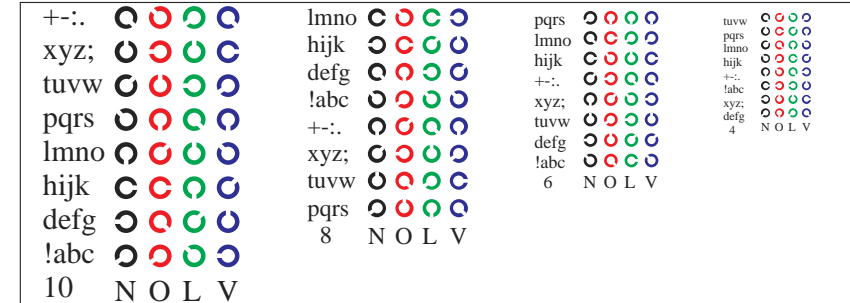
Picture D7n: Landolt-rings *N-V* and *N-W*; PS operator *olv* setrgbcolor* (only)



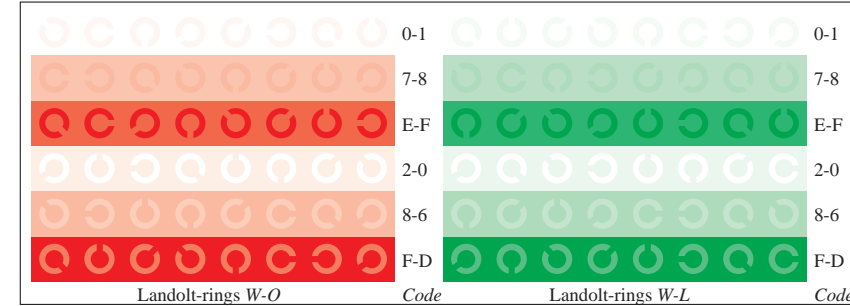
Test chart LE31: 16 CIELAB steps of ISO/IEC 15775
 Chromatic-White, Chromatic-Black, Black-White



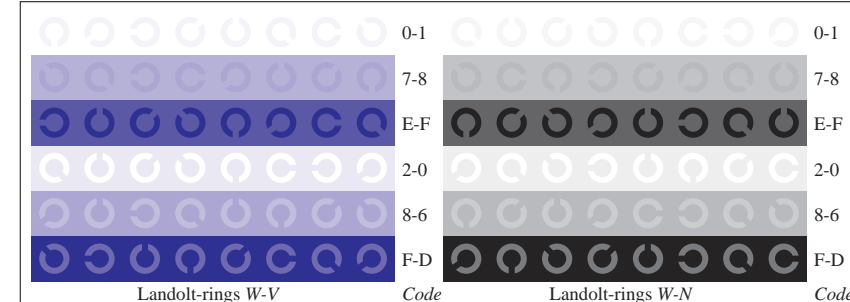
Picture D4w: 16 equidistant steps *W-O*, *W-L*, *W-V* and *W-N*; PS operator *olv* setrgbcolor / w* setgray*



Picture D5w: Script and Landolt-rings *N*, *O*, *L* and *V*; PS operator *olv* setrgbcolor / w* setgray*



Picture D6w: Landolt-rings *W-O* and *W-L*; PS operator *olv* setrgbcolor / w* setgray*



Picture D7w: Landolt-rings *W-V* and *W-N*; PS operator *olv* setrgbcolor / w* setgray*

input(TLS00): *olv* setrgbcolor*
 output(TLS00): *cmY0* / 000n* setmykcolor*

See for similar files: <http://www.ps.bam.de/LE31/LE31.HTM>
 Information and Order: <http://www.ps.bam.de>

Version 2.0, io=1,0; iTLS; oTLS; CIELAB

BAM registration: 20030101-LE31/10Q/Q31E40FP.PS/.PDF BAM material: code=th4ta
 application for measurement of monitor (Yr=2.5) and printer output