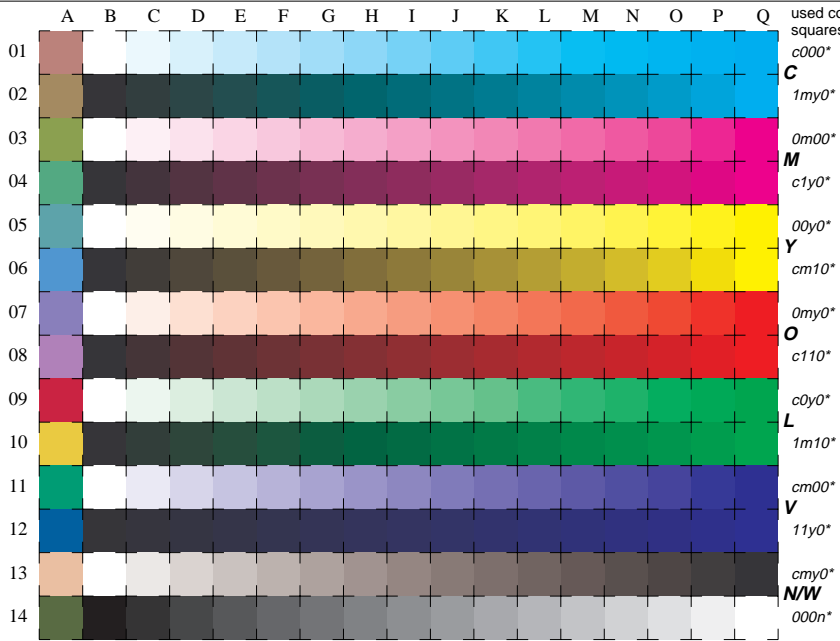


See for similar files: <http://www.ps.bam.de/LE30/LE30.HTM>  
 Information and Order: <http://www.ps.bam.de> Version 2.0, io=0.0



16 equidistant CIELAB steps: C-W, C-N, M-W, M-N, Y-W, Y-N, O-W, O-N, L-W, L-N, V-W, V-N, N-W (cmY0\*), W-N (000n\*) and 14 CIE-test colours (left)

Test chart LE30: 16 CIELAB steps of ISO/IEC 15775  
 Chromatic-White, Chromatic-Black, Black-White

input(TLS00): *cmyn\* setcmkcolor*  
 output(TLS00): *no change compared to input*

used coordinate squares  
 C 000°  
 1my0°  
 0m00°  
 M c1y0°  
 00y0°  
 Y cm10°  
 0my0°  
 O 0m110°  
 c0y0°  
 L 1m10°  
 cm00°  
 V 11y0°  
 cmY0°  
 N/W 000n°

BAM registration: 20030101-LE30/L30E00N1.PS/.TXT  
 application for measurement of monitor (Y1=2.5) and printer output  
 BAM material: code=thata