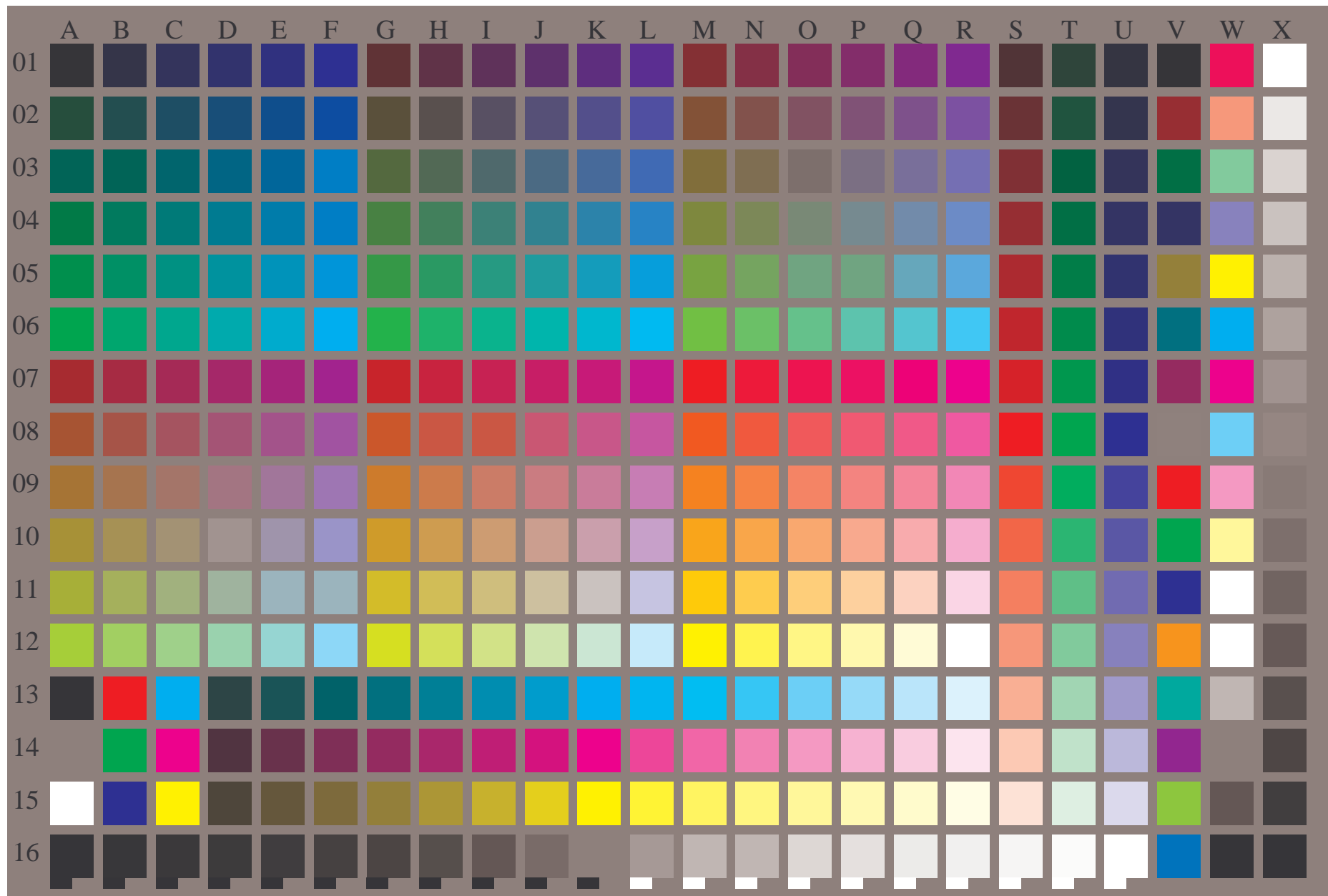


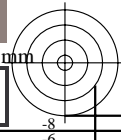
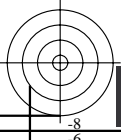
See for similar files: <http://www.ps.bam.de/LE28/>
Technical information: <http://www.ps.bam.de> Version 2.1, io=0,0

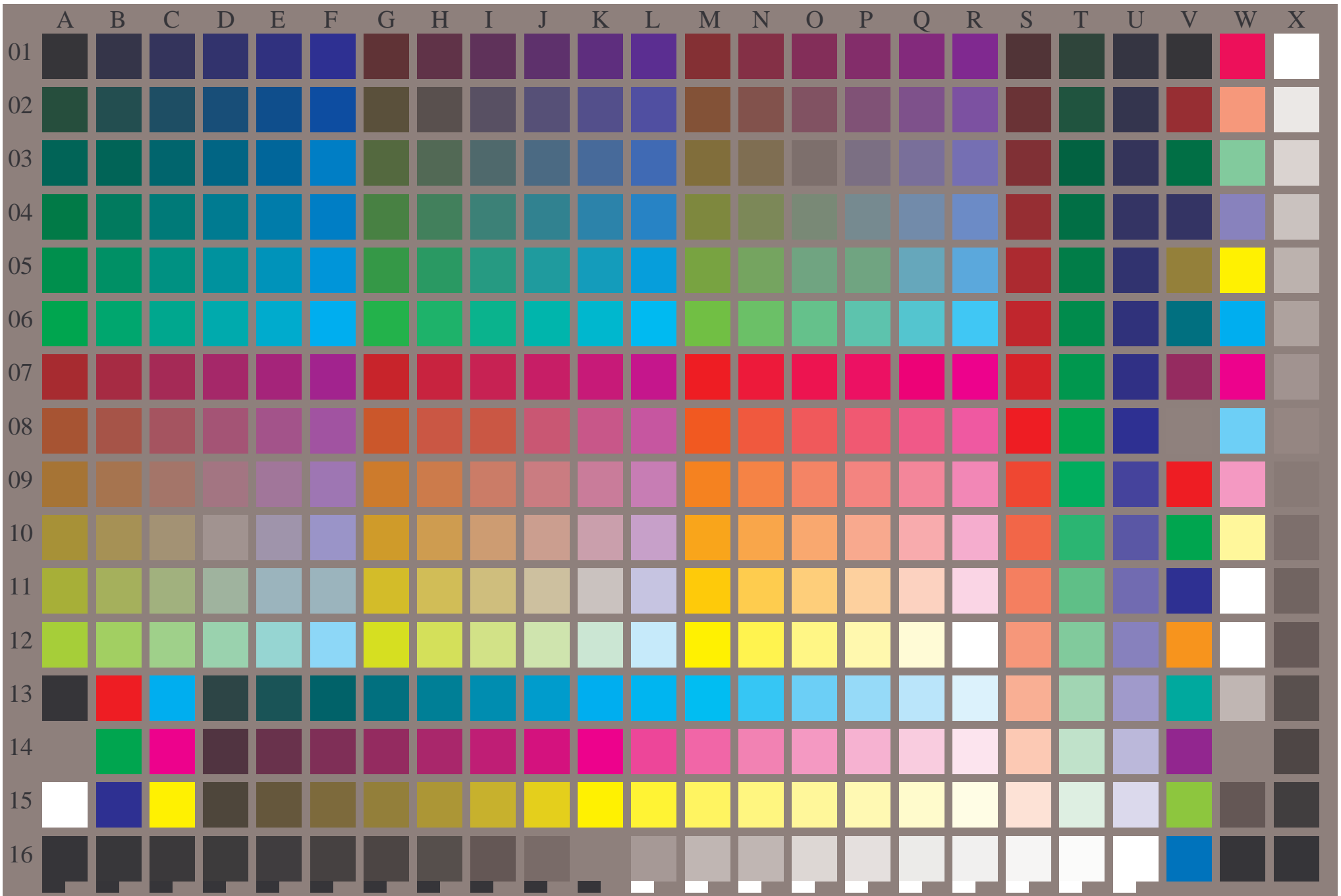
BAM registration: 20040501-LE28/10Q/Q28E00NP.PS/.PDF BAM material: code=rh4ta
application for measurement of printer systems
/LE28 Form: 1/5, Serie: 1/1, Page: 1 Page count: 1



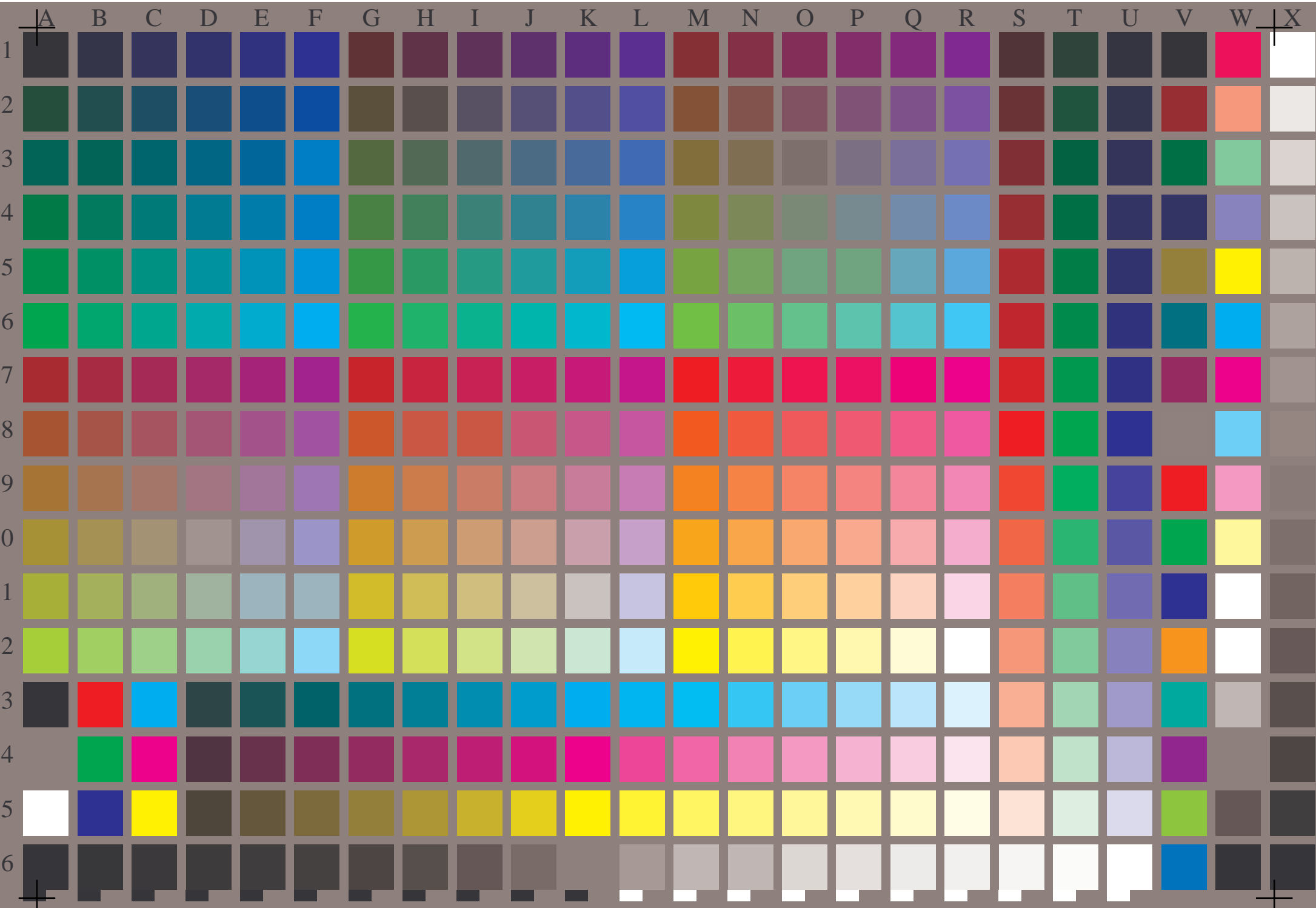
Test chart file with 363 colours and digital equidistant 5 and 16 step grey scale; see IEC 61966-7-1:1999 and ISO/IEC 15775:1999; cmy0 colour coordinates, patch size and grey layout 8mm x 8mm, 245mm x 165mm

BAM-test chart no. LE28
384 colours of IEC 61966-7-1:1999 und ISO/IEC 15775:1999
input: cmy0 setcmykcolor
output: no change compared to input

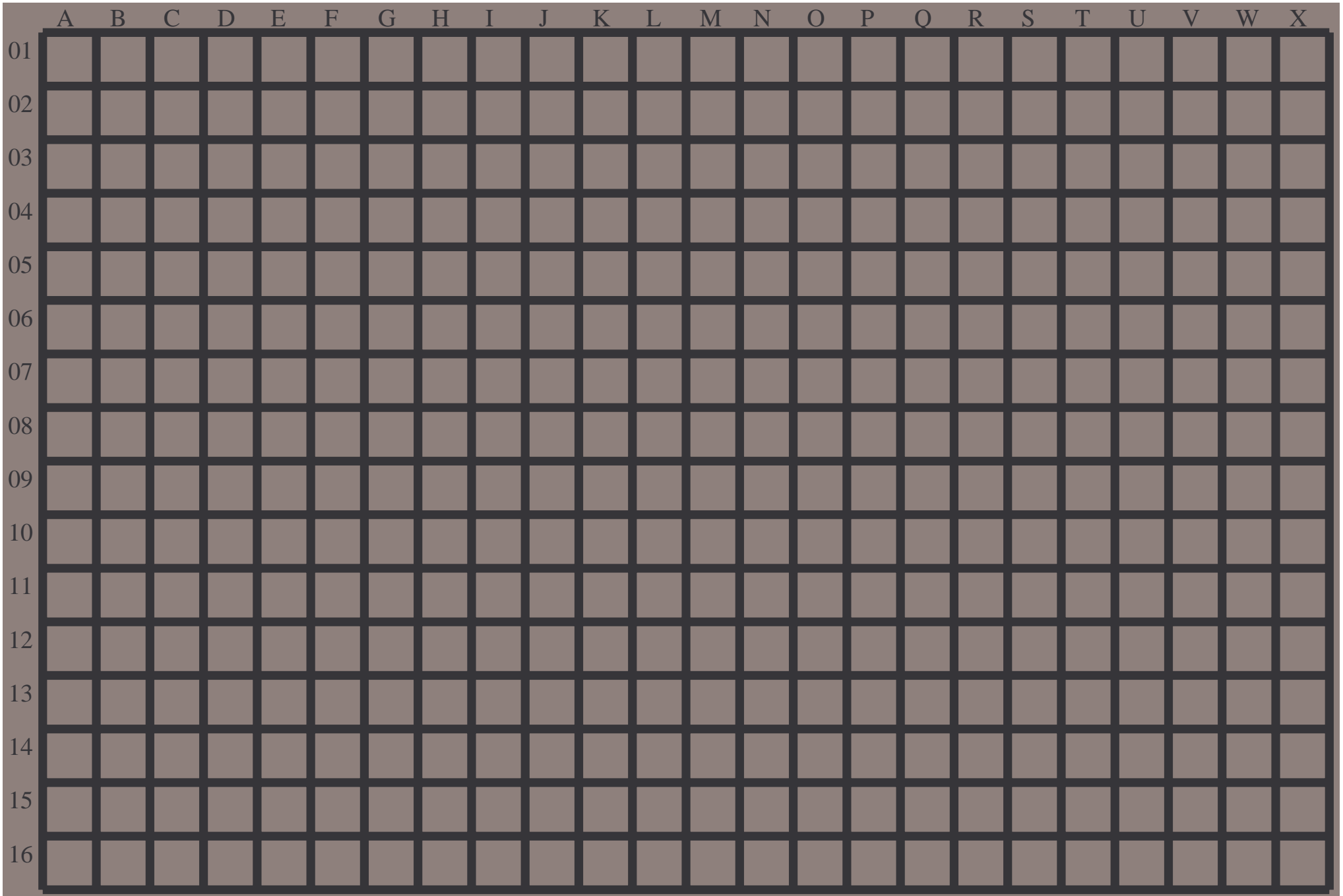




Test chart file with 363 colours and digital equidistant 5 and 16 step grey scale; see IEC 61966-7-1:1999 and ISO/IEC 15775:1999; cmy0 colour coordinates, patch size and grey layout 9mm x 9mm, 268mm x 180mm



Test chart file with 363 colours and digital equidistant 5 and 16 step grey scale; see IEC 61966-7-1:1999 and ISO/IEC 15775:1999; cmy0 colour coordinates, patch size and grey layout 10mm x 10mm, 295mm x 198mm



Test chart file with 384 (16x24) grey colours for IEC 61966-7-1; cmy0 colour coordinates, patch size and grey layout 9mm x 9mm, 268mm x 180mm

