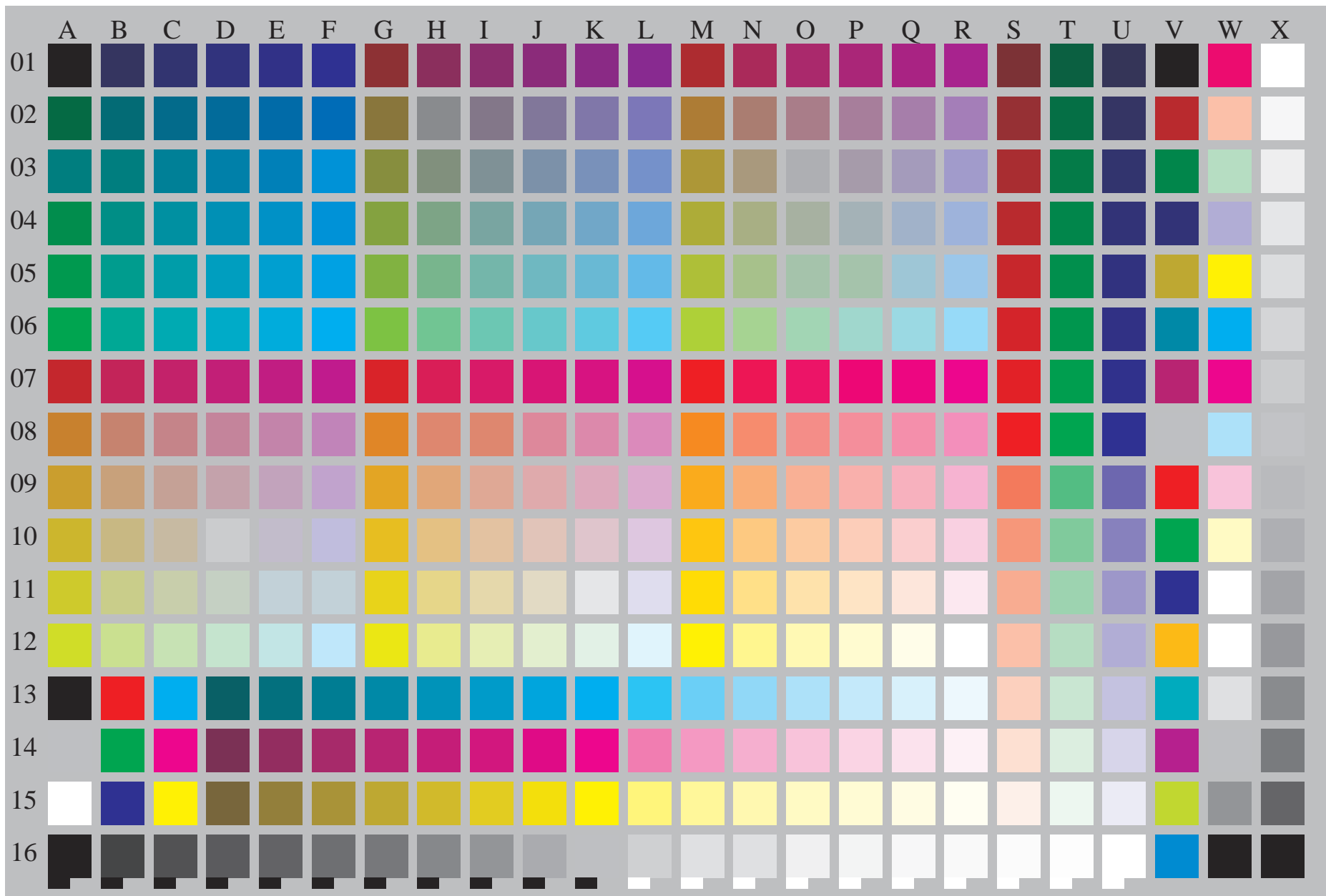


See for similar files: <http://www.ps.bam.de/LE28/>
 Technical information: <http://www.ps.bam.de>

Version 2.1, io=0,0; iORS; oORS, CIELAB

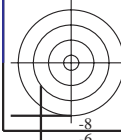
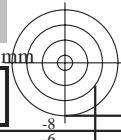
BAM registration: 20040501-LE28/10Q/Q28E00FP.PS/.PDF
 application for measurement of printer systems

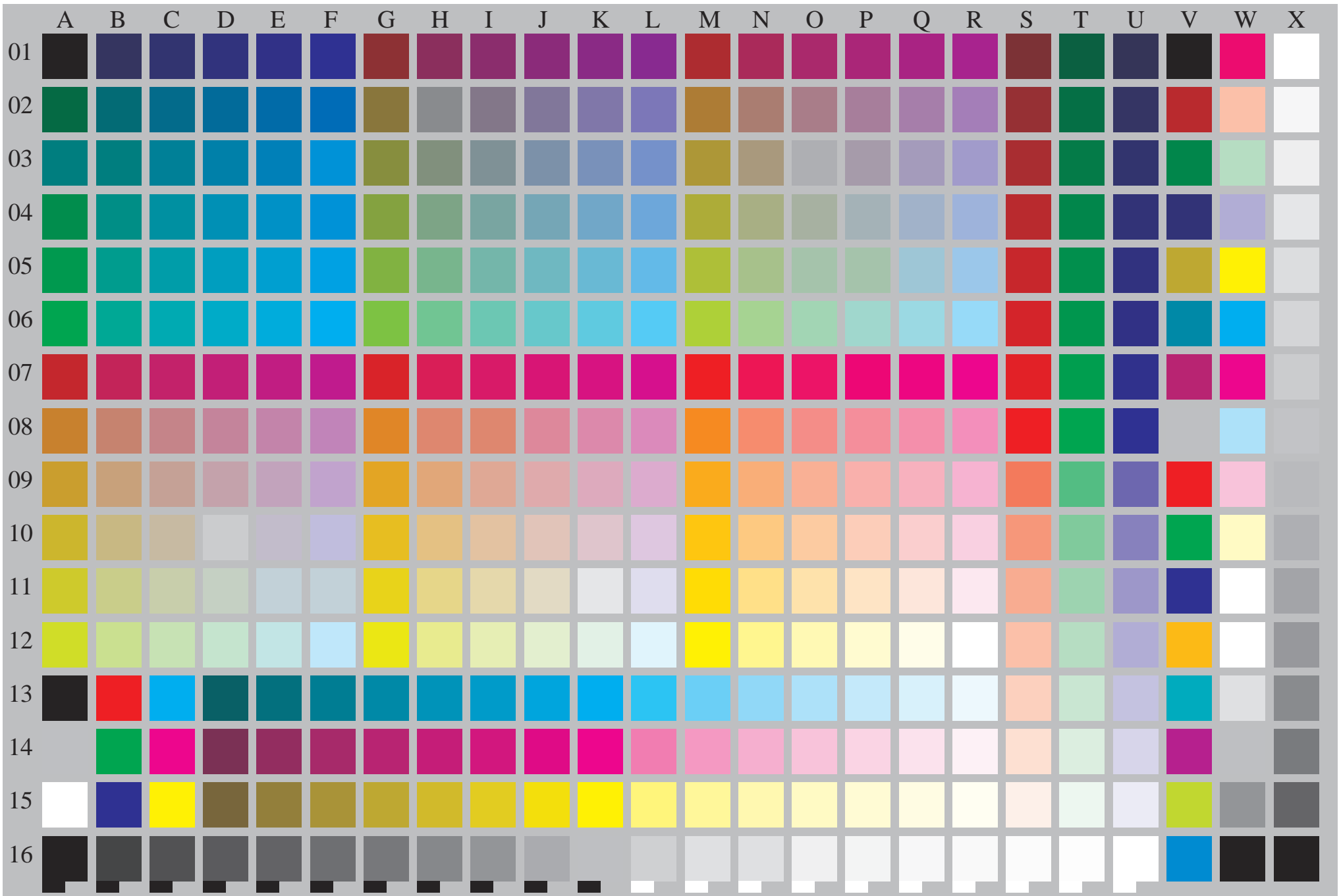
BAM material: code=rh4ta
 /LE28 Form: 1/5, Serie: 1/1, Page: 1 Page count: 1



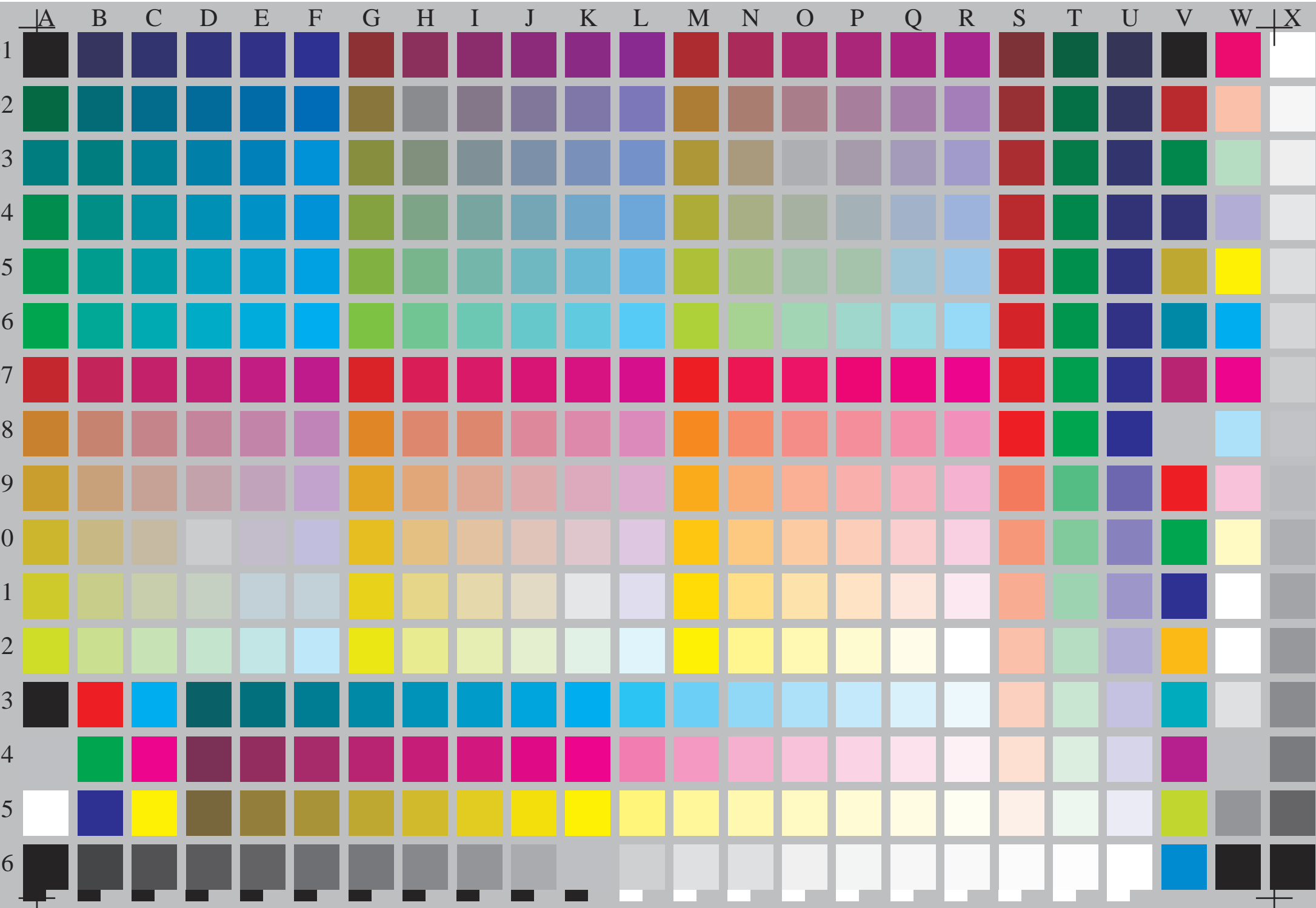
Test chart file with 363 colours and digital equidistant 5 and 16 step grey scale; see IEC 61966-7-1:1999 and ISO/IEC 15775:1999; cmy0 colour coordinates, patch size and grey layout 8mm x 8mm, 245mm x 165mm

BAM-test chart no. LE28
 384 colours of IEC 61966-7-1:1999 und ISO/IEC 15775:1999
 input: *cmy0 setcmykcolor*
 output: *cmy0* / 000n* setcmykcolor*





Test chart file with 363 colours and digital equidistant 5 and 16 step grey scale; see IEC 61966-7-1:1999 and ISO/IEC 15775:1999; cmy0 colour coordinates, patch size and grey layout 9mm x 9mm, 268mm x 180mm



Test chart file with 363 colours and digital equidistant 5 and 16 step grey scale; see IEC 61966-7-1:1999 and ISO/IEC 15775:1999; cmy0 colour coordinates, patch size and grey layout 10mm x 10mm, 295mm x 198mm

	A	B	C	D	E	F	G	H	I	J	K	L	M	N	O	P	Q	R	S	T	U	V	W	X	
01																									
02																									
03																									
04																									
05																									
06																									
07																									
08																									
09																									
10																									
11																									
12																									
13																									
14																									
15																									
16																									

Test chart file with 384 (16x24) grey colours for IEC 61966-7-1; cmy0 colour coordinates, patch size and grey layout 9mm x 9mm, 268mm x 180mm

