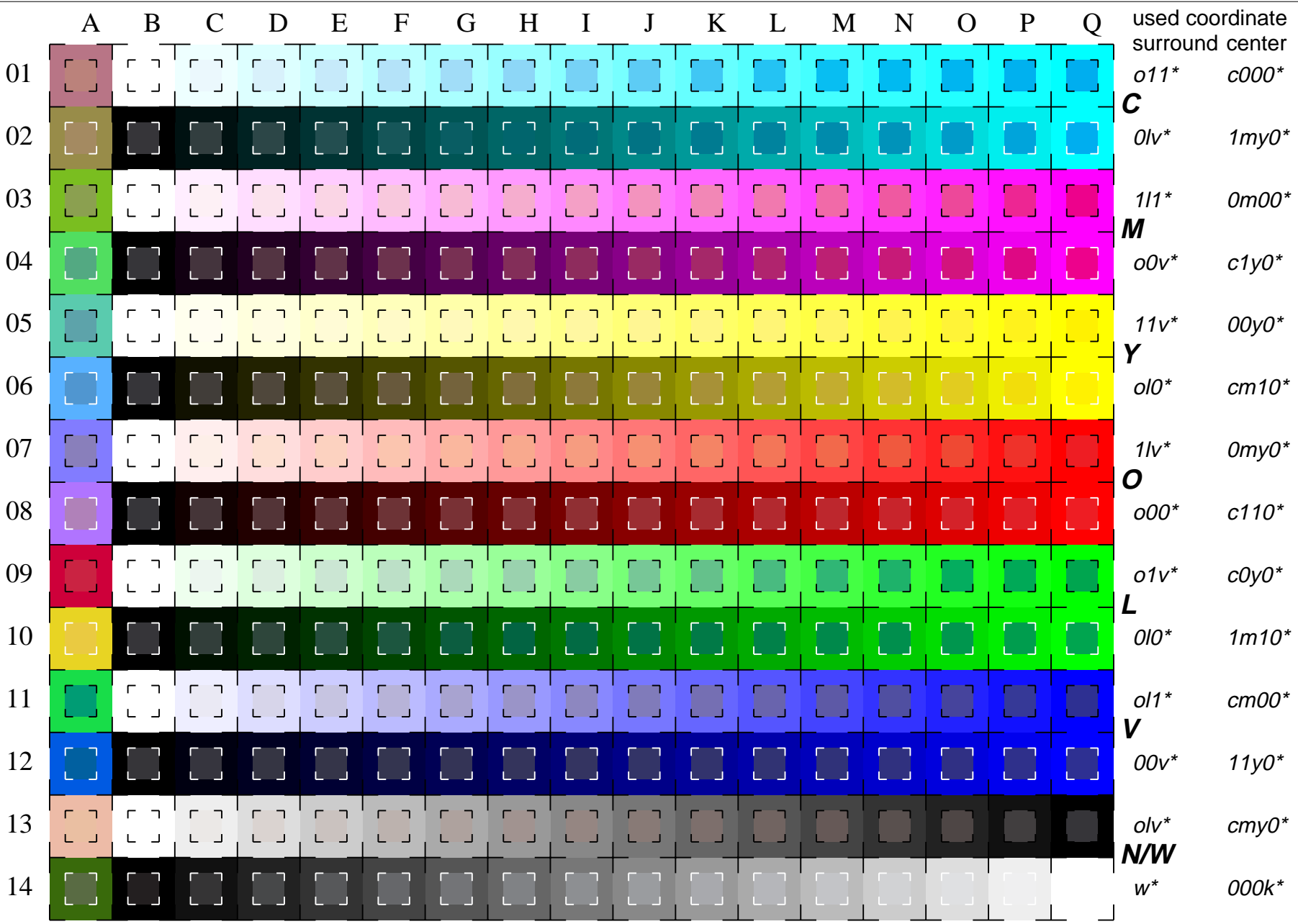


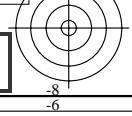
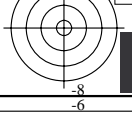


See for similar files: <http://www.ps.bam.de/LE16/10S/S16E00NP.PS/.PDF>
 Information and Order: [http://www.ps.bam.de/Version 2.0, io=0,0](http://www.ps.bam.de/Version%202.0,%20io=0,0)

BAM registration: 20030101-LE16/10S/S16E00NP.PS/.PDF
 application for measurement of monitor (Yr=2.5) and printer output



used coordinate
 surround center
C $o11^*$ $c000^*$
 $0lv^*$ $1my0^*$
M 111^* $0m00^*$
 $o0v^*$ $c1y0^*$
Y $11v^*$ $00y0^*$
 $o10^*$ $cm10^*$
O $1lv^*$ $0my0^*$
 $o00^*$ $c110^*$
L $o1v^*$ $c0y0^*$
 $0l0^*$ $1m10^*$
V $o11^*$ $cm00^*$
 $00v^*$ $11y0^*$
N/W $o1v^*$ $cmv0^*$
 w^* $000k^*$



16 equidistant CIELAB steps: C-W, C-N, M-W, M-N, Y-W, Y-N, O-W, O-N, L-W, L-N, V-W, V-N, N-W, W-N and 14 CIE-test colours (left)

