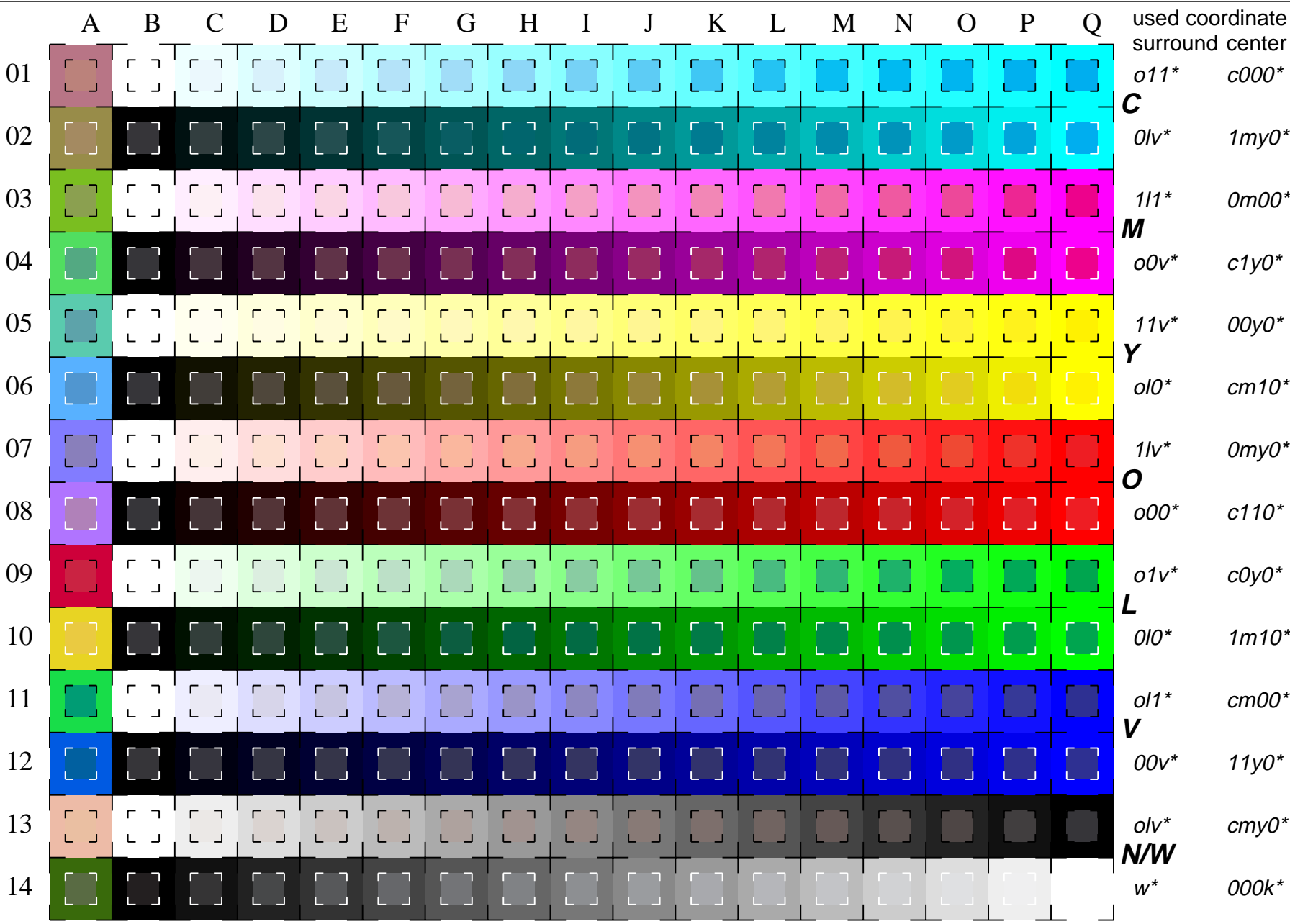
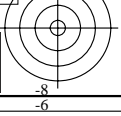
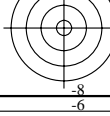


See for similar files: <http://www.ps.bam.de/LE16/10Q/Q16E05NP.PS/.PDF>  
 Information and Order: [http://www.ps.bam.de/Version 2.0, io=0,0](http://www.ps.bam.de/Version%202.0,%20io=0,0)

BAM registration: 20030101-LE16/10Q/Q16E05NP.PS/.PDF BAM material: code=tha4ta  
 application for measurement of monitor (Yr=2.5) and printer output



used coordinate  
 surround center  
**C**  $o11^*$   $c000^*$   
 $0lv^*$   $1my0^*$   
**M**  $111^*$   $0m00^*$   
 $o0v^*$   $c1y0^*$   
**Y**  $11v^*$   $00y0^*$   
 $o10^*$   $cm10^*$   
**O**  $1lv^*$   $0my0^*$   
 $o00^*$   $c110^*$   
**L**  $o1v^*$   $c0y0^*$   
 $0l0^*$   $1m10^*$   
**V**  $o11^*$   $cm00^*$   
 $00v^*$   $11y0^*$   
**N/W**  $o1v^*$   $cmv0^*$   
 $w^*$   $000k^*$



16 equidistant CIELAB steps: C-W, C-N, M-W, M-N, Y-W, Y-N, O-W, O-N, L-W, L-N, V-W, V-N, N-W, W-N and 14 CIE-test colours (left)

