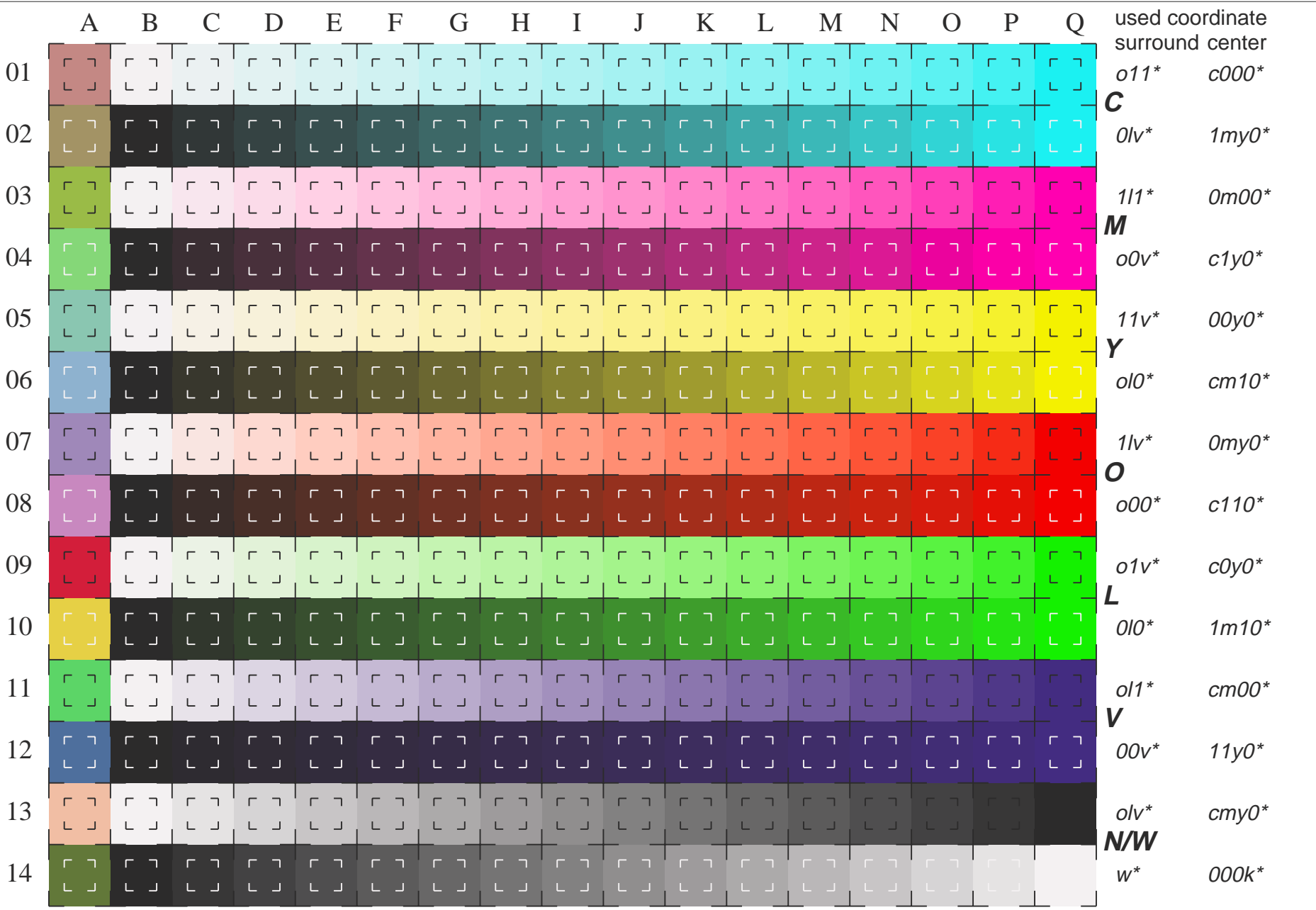




See for similar files: <http://www.ps.bam.de/LE16/10Q/Q16E05FP.PS/.PDF>
 Information and Order: [http://www.ps.bam.de/Version 2.0, io=0,5; i;TLS; otLS, CIELAB](http://www.ps.bam.de/Version%202.0,%20io=0,5,%20i;TLS;otLS,CIELAB)

BAM registration: 20030101-LE16/10Q/Q16E05FP.PS/.PDF BAM material: code=tha4ta
 application for measurement of monitor (Yr=2.5) and printer output



used coordinate
surround center

C
*o11** *c000**
*0lv** *1my0**
M
*111** *0m00**
*o0v** *c1y0**
Y
*11v** *00y0**
*o10** *cm10**
O
*1lv** *0my0**
*o00** *c110**
L
*o1v** *c0y0**
*0l0** *1m10**
V
*o11** *cm00**
*00v** *11y0**
N/W
*olv** *cmv0**
*w** *000k**

16 equidistant CIELAB steps: C-W, C-N, M-W, M-N, Y-W, Y-N, O-W, O-N, L-W, L-N, V-W, V-N, N-W, W-N and 14 CIE-test colours (left)

Test chart LE16: 16 CIELAB steps of ISO/IEC 15775 input ,TLS00: LAB* setcolor/cmy* setcmyk..
 Chromatic-White, Chromatic-Black, Black-White output ,TLS00: LAB* setcolor

