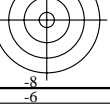
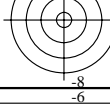
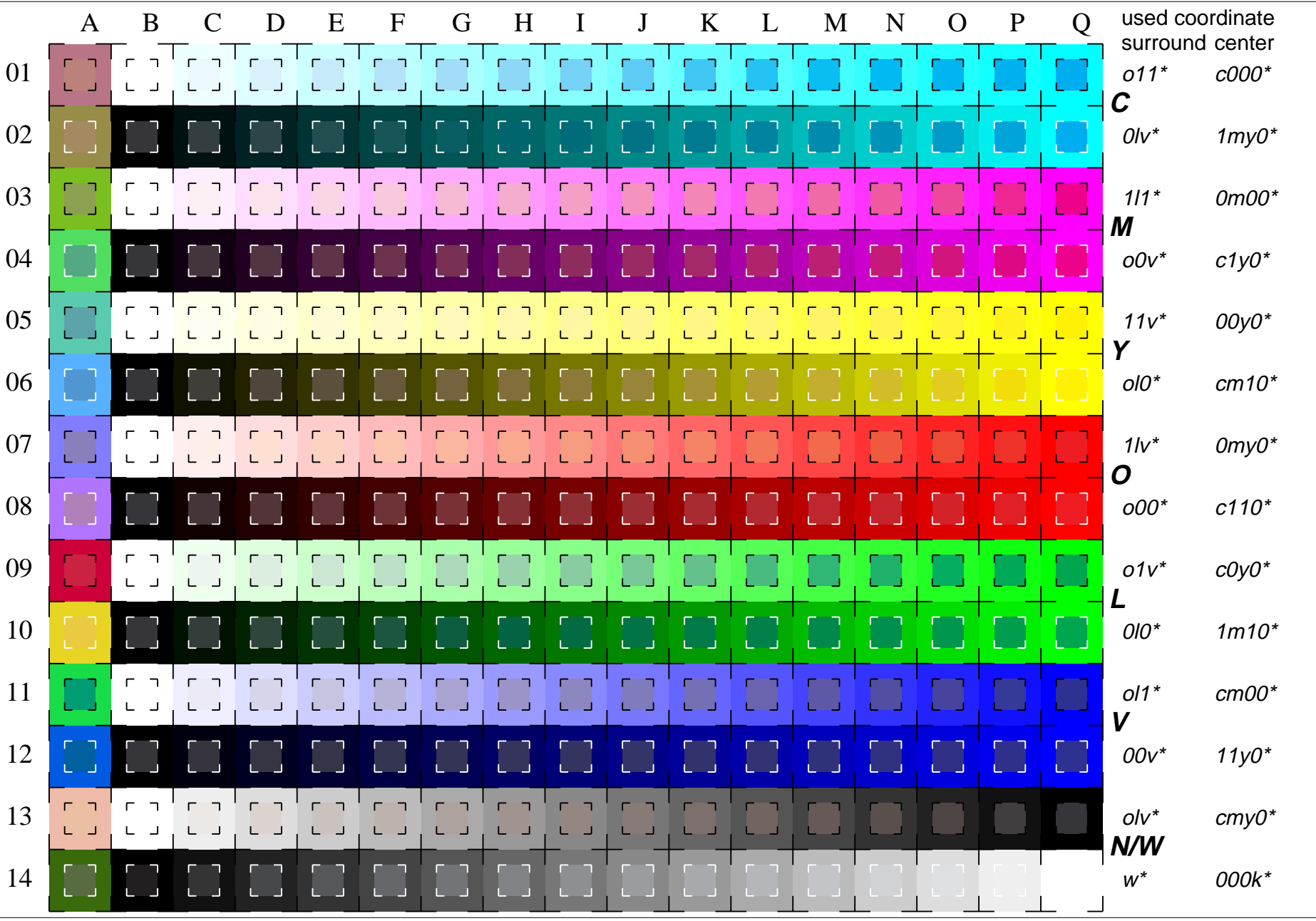


See for similar files: <http://www.ps.bam.de/LE16/10Q/Q16E01NP.PS/.PDF>
 Information and Order: <http://www.ps.bam.de/LE16/10Q/Q16E01NP.PS/.PDF>
 Version 2.0, io=0,0

BAM registration: 20030101-LE16/10Q/Q16E01NP.PS/.PDF
 application for measurement of monitor (Yr=2.5) and printer output
 BAM material: code=tha4ta



16 equidistant CIELAB steps: C-W, C-N, M-W, M-N, Y-W, Y-N, O-W, O-N, L-W, L-N, V-W, V-N, N-W, W-N and 14 CIE-test colours (left)

Test chart LE16: 16 CIELAB steps of ISO/IEC 15775
 Chromatic-White, Chromatic-Black, Black-White
 input ,TLS00: LAB* setcolor/cmy* setcmyk..
 output ,TLS00: no change compared to input

