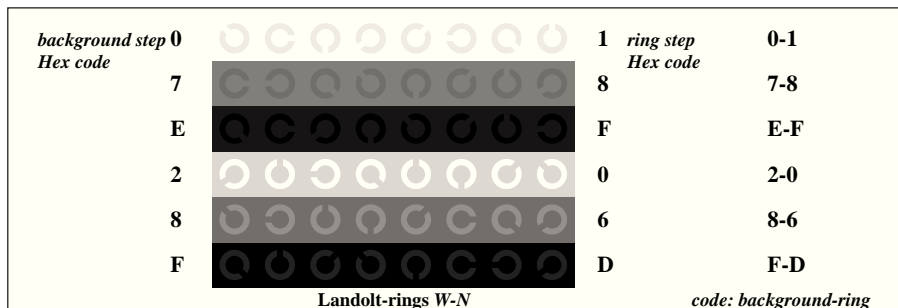
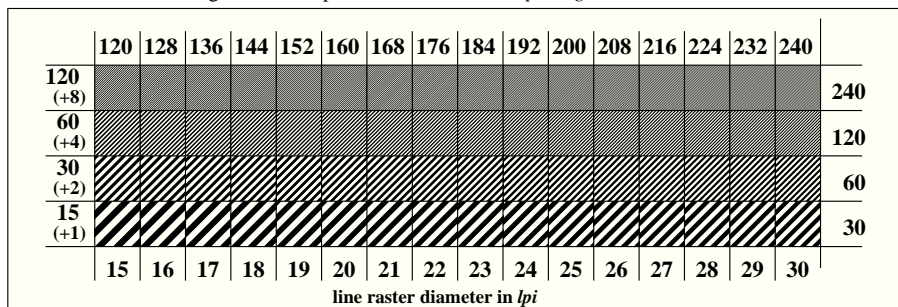


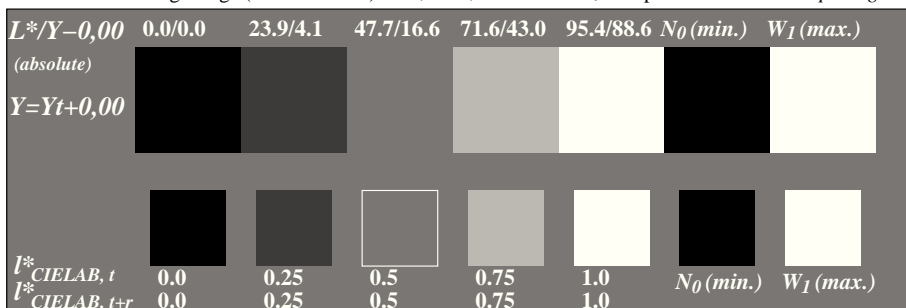
Picture C1: Radial gratings (Siemens-stars) N-W, W-N, N-Z and W-Z; PS oper.: `www*lin 1.0 exp setrgbcolor`



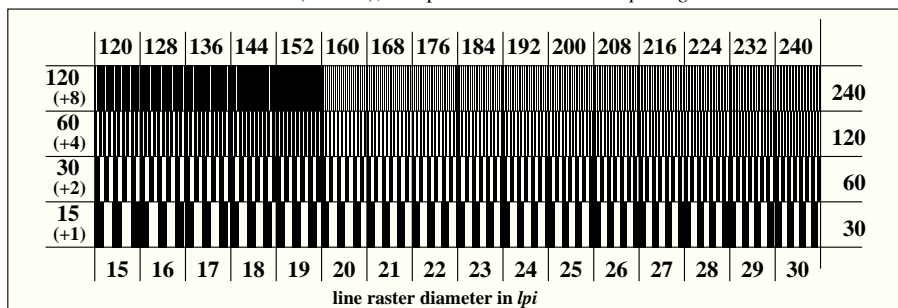
Picture C4: Landolt-rings W-N; PS operator: `www*lin 1.0 exp setrgbcolor`



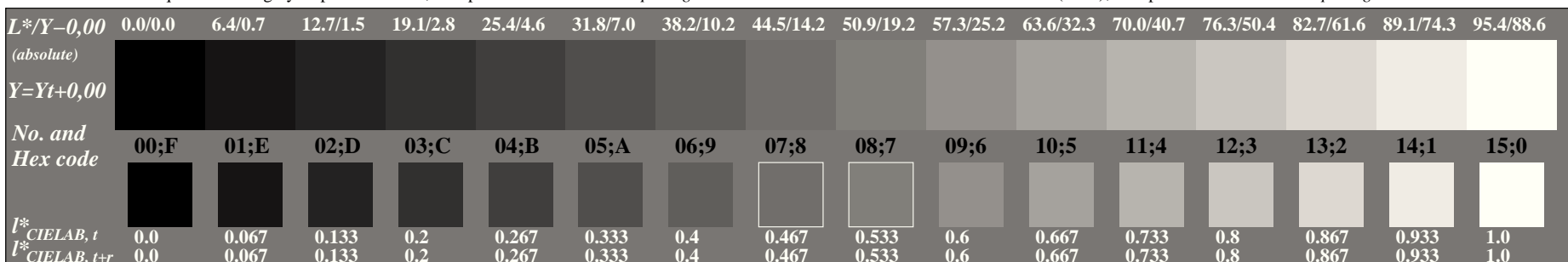
Picture C5: Line raster under 45° (or 135°); PS operator: `www*lin 1.0 exp setrgbcolor`



Picture C2: 5 visual equidistant L\*-grey steps +  $N_0$  +  $W_1$ ; PS operator: `www*lin 1.0 exp setrgbcolor`



Picture C6: Line raster under 90° (or 0°); PS operator: `www*lin 1.0 exp setrgbcolor`



Picture C3: 16 visual equidistant L\*-grey steps; PS operator: `www*lin 1.0 exp setrgbcolor`

