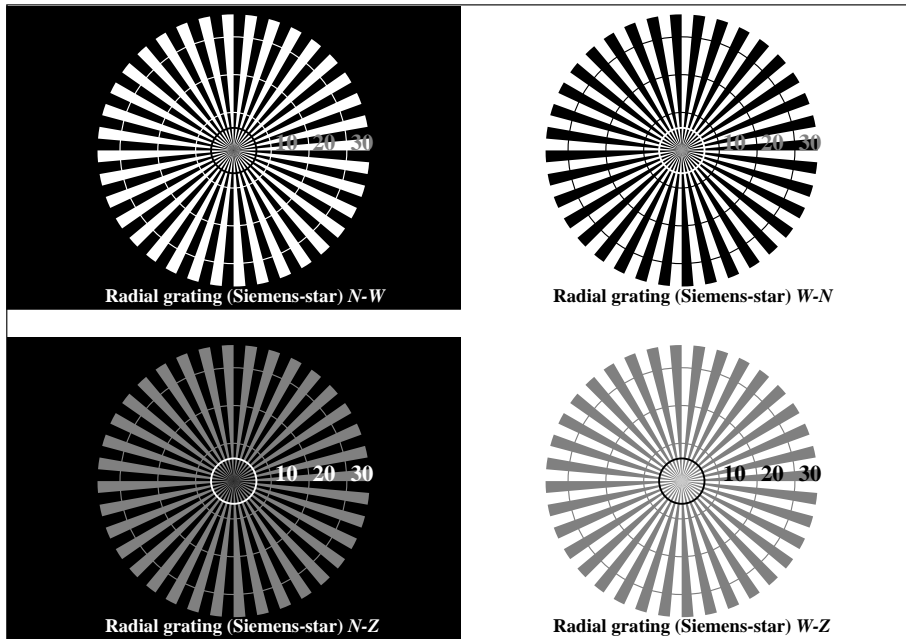


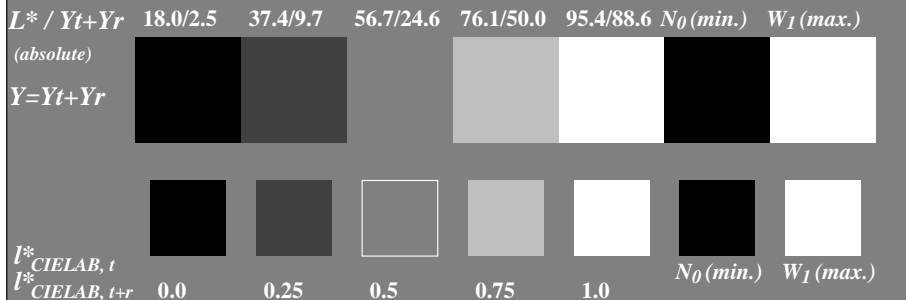
See for similar files: <http://www.ps.bam.de/IE87/>  
 Information and Order: <http://www.ps.bam.de>

Version 2.0, io=1,1?

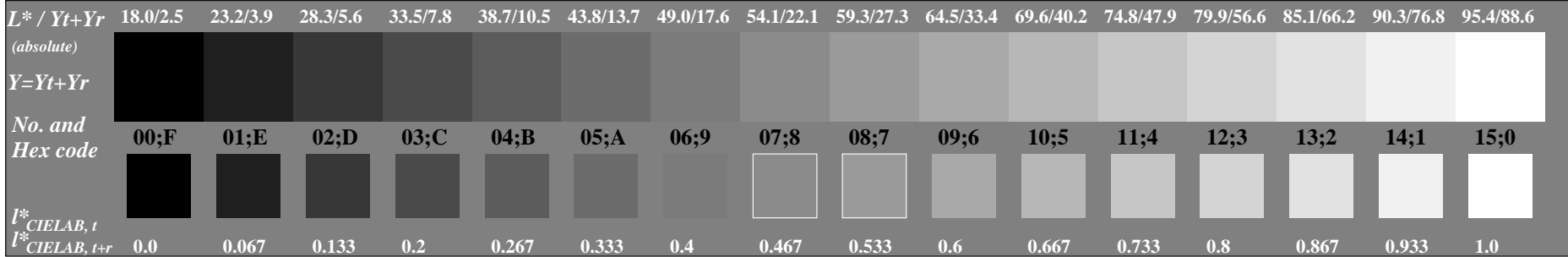
BAM registration: 20031201-IE87/10B/B87E02SP.PS/.PDF  
 Full page: application for monitors (Yr=2.5) and printers  
 BAM material: code=tha4ta



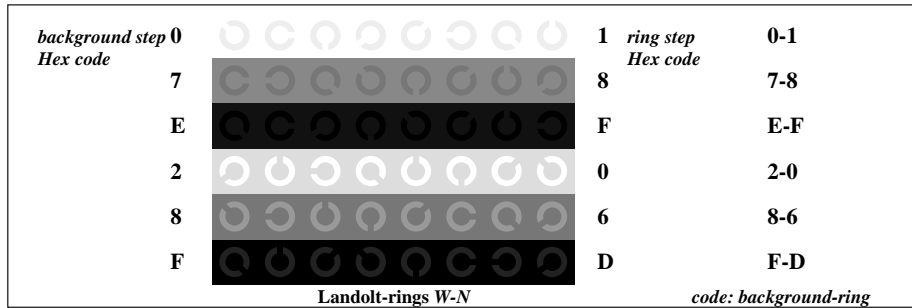
Picture C1: Radial gratings (Siemens-stars) N-W, W-N, N-Z and W-Z; PS oper.: *w\*lin 1.0 exp setgray*



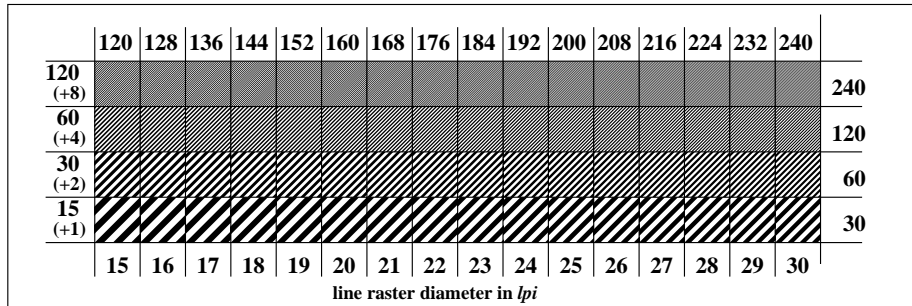
Picture C2: 5 visual equidistant  $L^*$ -grey steps +  $N_0$  +  $W_I$ ; PS operator: *w\*lin 1.0 exp setgray*



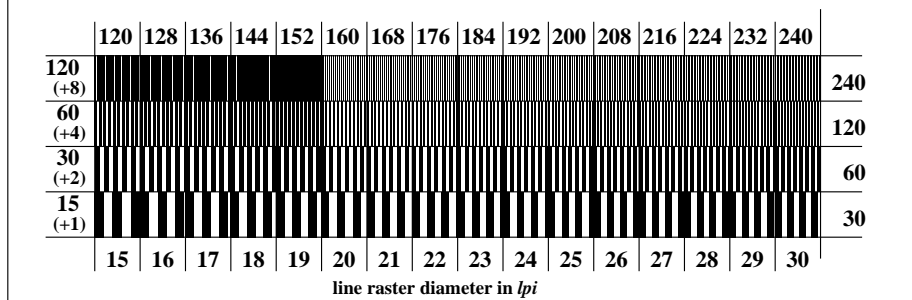
Picture C3: 16 visual equidistant  $L^*$ -grey steps; PS operator: *w\*lin 1.0 exp setgray*



Picture C4: Landolt-rings W-N; PS operator: *w\*lin 1.0 exp setgray*



Picture C5: Line raster under 45° (or 135°); PS operator: *w\*lin 1.0 exp setgray*



Picture C6: Line raster under 90° (or 0°); PS operator: *w\*lin 1.0 exp setgray*

