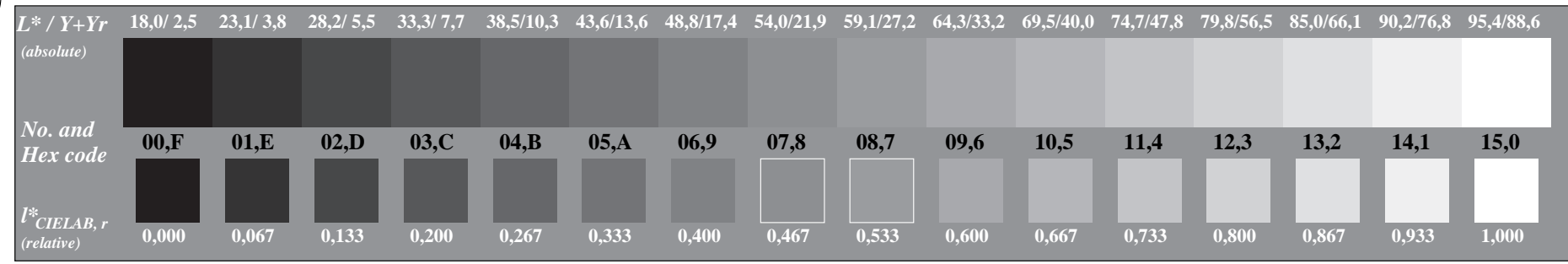
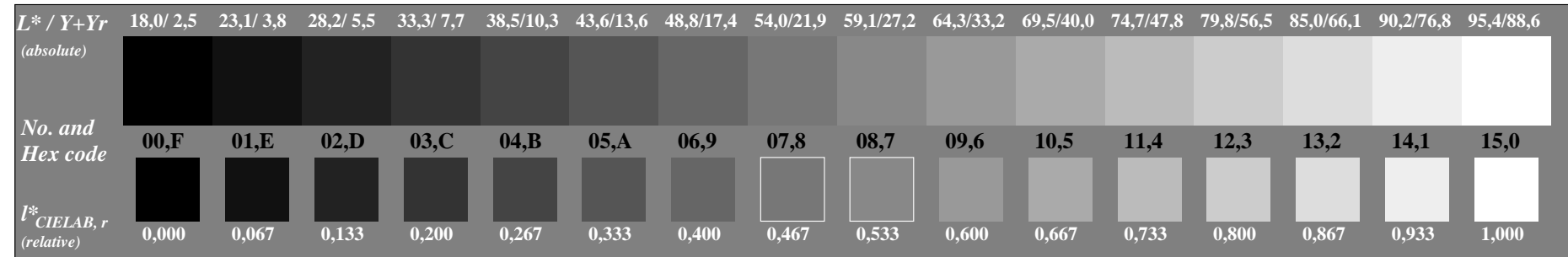


See for similar files: <http://www.ps.bam.de/DE81/DE81.HTM>  
 Information and Order: <http://www.ps.bam.de> Version 2.0, io=m,m?

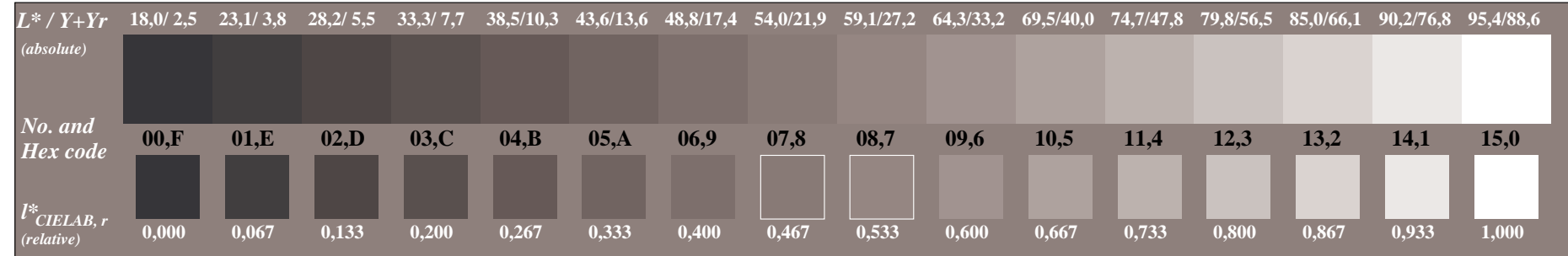
BAM registration: 20030101-IE81/10B/B81E03SP.PS/.PDF  
 application for monitors and printers  
 BAM material: code=thata



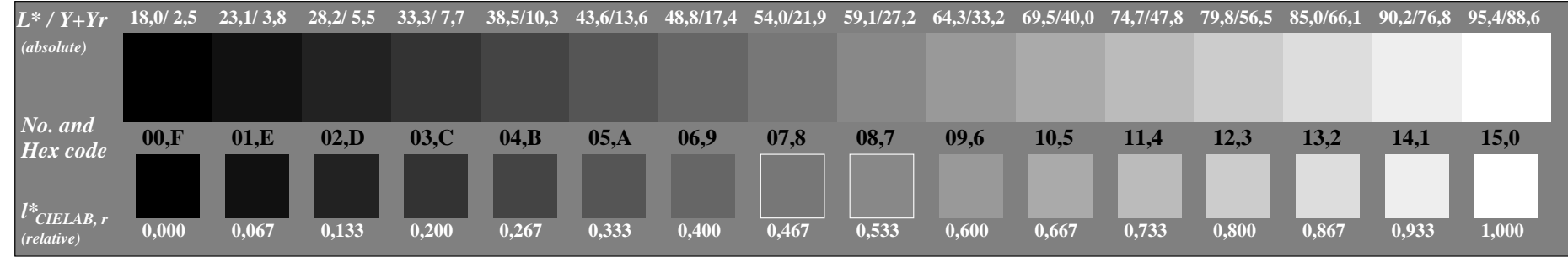
Picture C3: 16 visual equidistant  $L^*$ -grey steps; Use of the PS operator  $000n^* setcmykcolor$



Picture C3: 16 visual equidistant  $L^*$ -grey steps; Use of the PS operator  $w^* setgray$



Picture C3: 16 visual equidistant  $L^*$ -grey steps; Use of the PS operator  $nnn0^* setcmykcolor$



Picture C3: 16 visual equidistant  $L^*$ -grey steps; Use of the PS operator  $www^* setrgbcolor$

Fig. C3 of ISO/IEC-test chart no. 3;

ISO/IEC 15775 and DIS ISO/IEC 19839-X; input: mixture (m) of PS operators  
 output: Startup (S) data dependend

