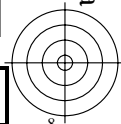
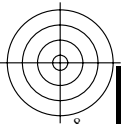
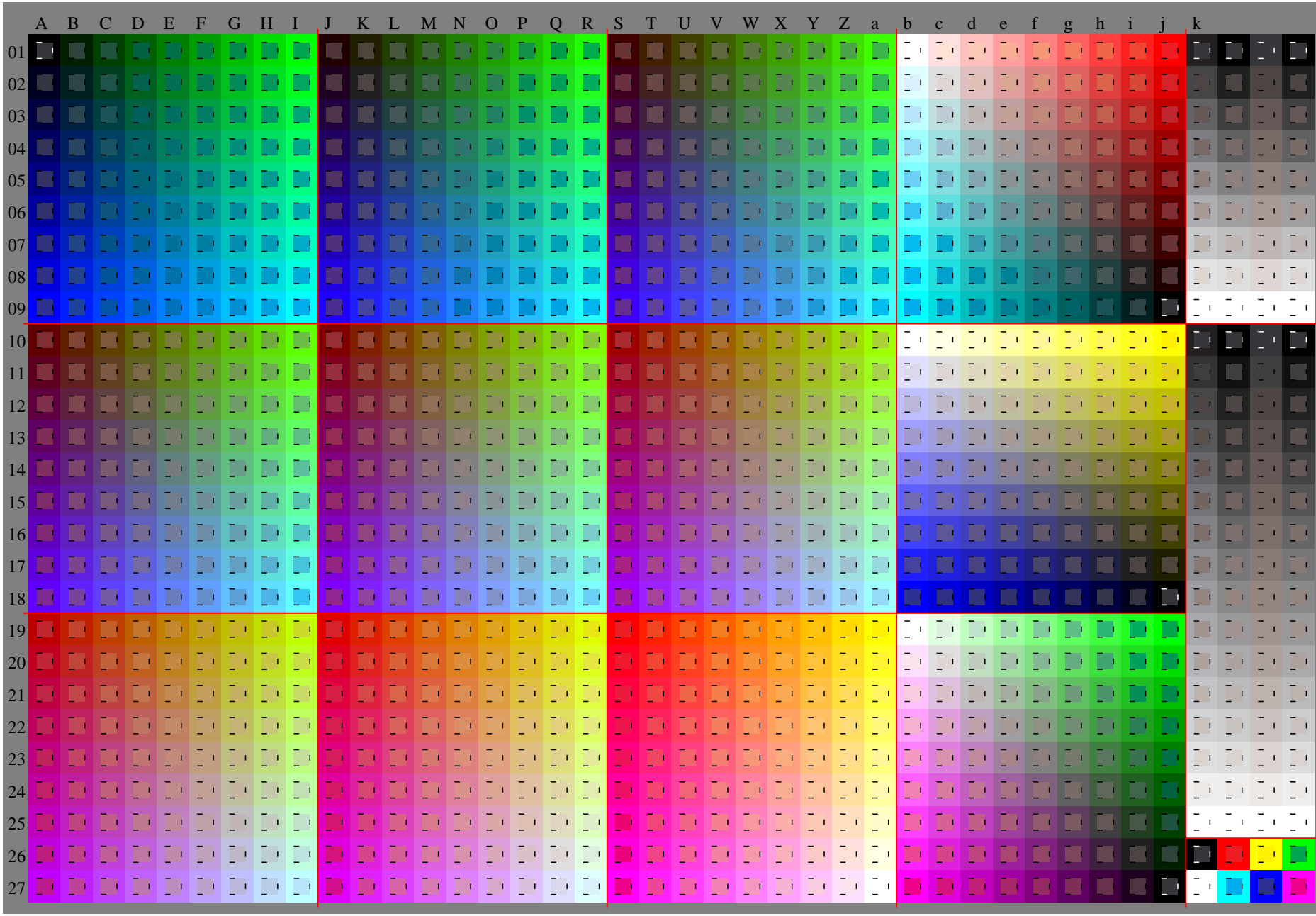
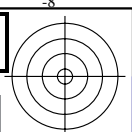
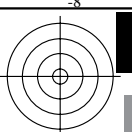


Siehe ähnliche Dateien: <http://www.ps.bam.de/Gg02/>; www.ps.bam.de/Gg02/HTM
Technische Information: <http://www.ps.bam.de> Version 2.1, io=1,1, ColSpX=1

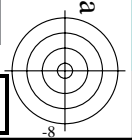
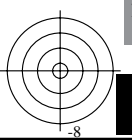
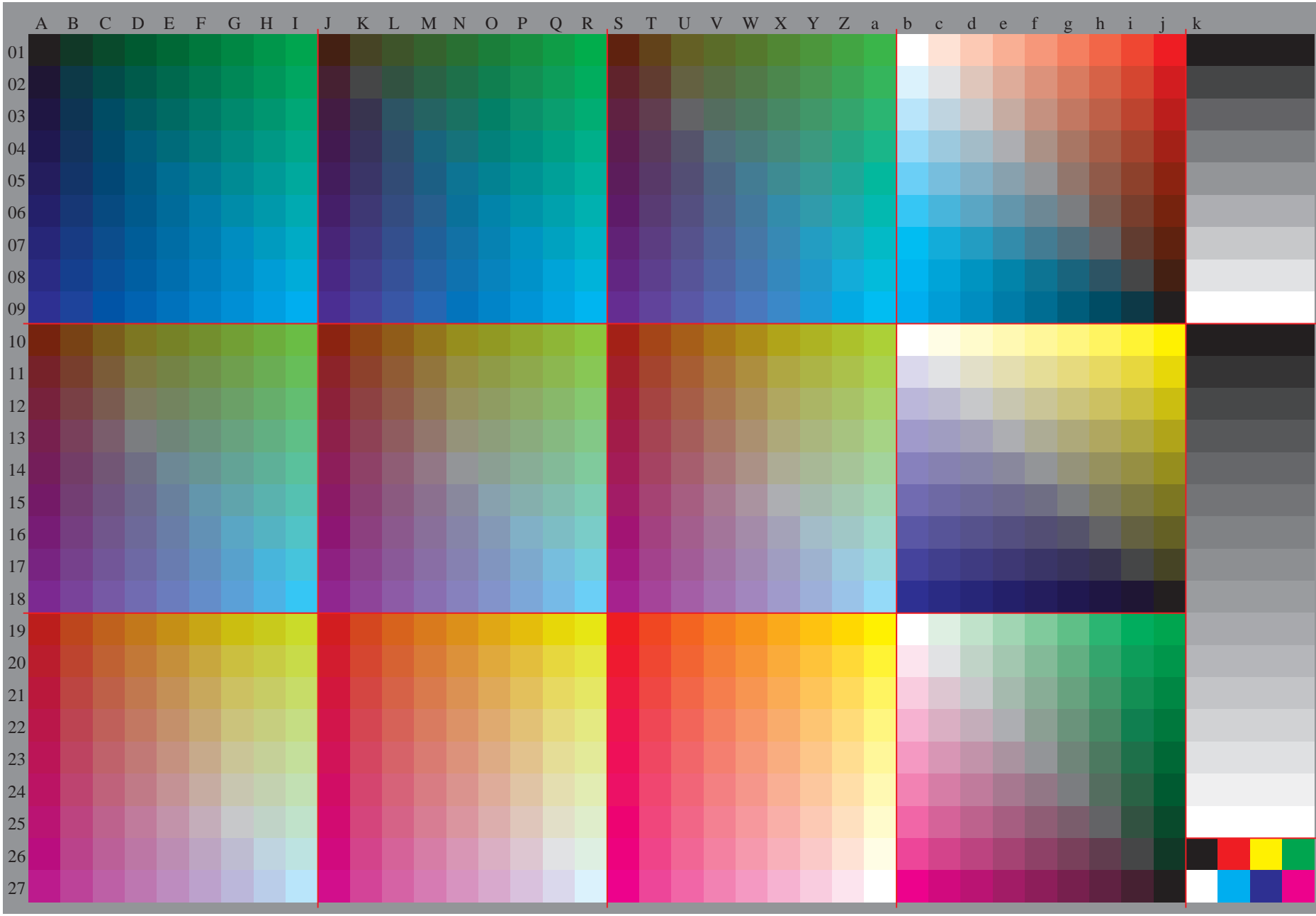
BAM-Registrierung: 20081201-Gg02/10L/L02g00NA.TXT/ .PS BAM-Material: Code=rh4ta
Anwendung für Beurteilung und Messung von Drucker- oder Monitorsystemen





Siehe ähnliche Dateien: <http://www.ps.bam.de/Gg02/>; www.ps.bam.de/Gg.HTM
Technische Information: <http://www.ps.bam.de> Version 2.1, io=1,1, ColSpX=1

BAM-Registrierung: 20081201-Gg02/10L/L02g00NA.TXT/ .PS BAM-Material: Code=rh4ta
Anwendung für Beurteilung und Messung von Drucker- oder Monitorsystemen



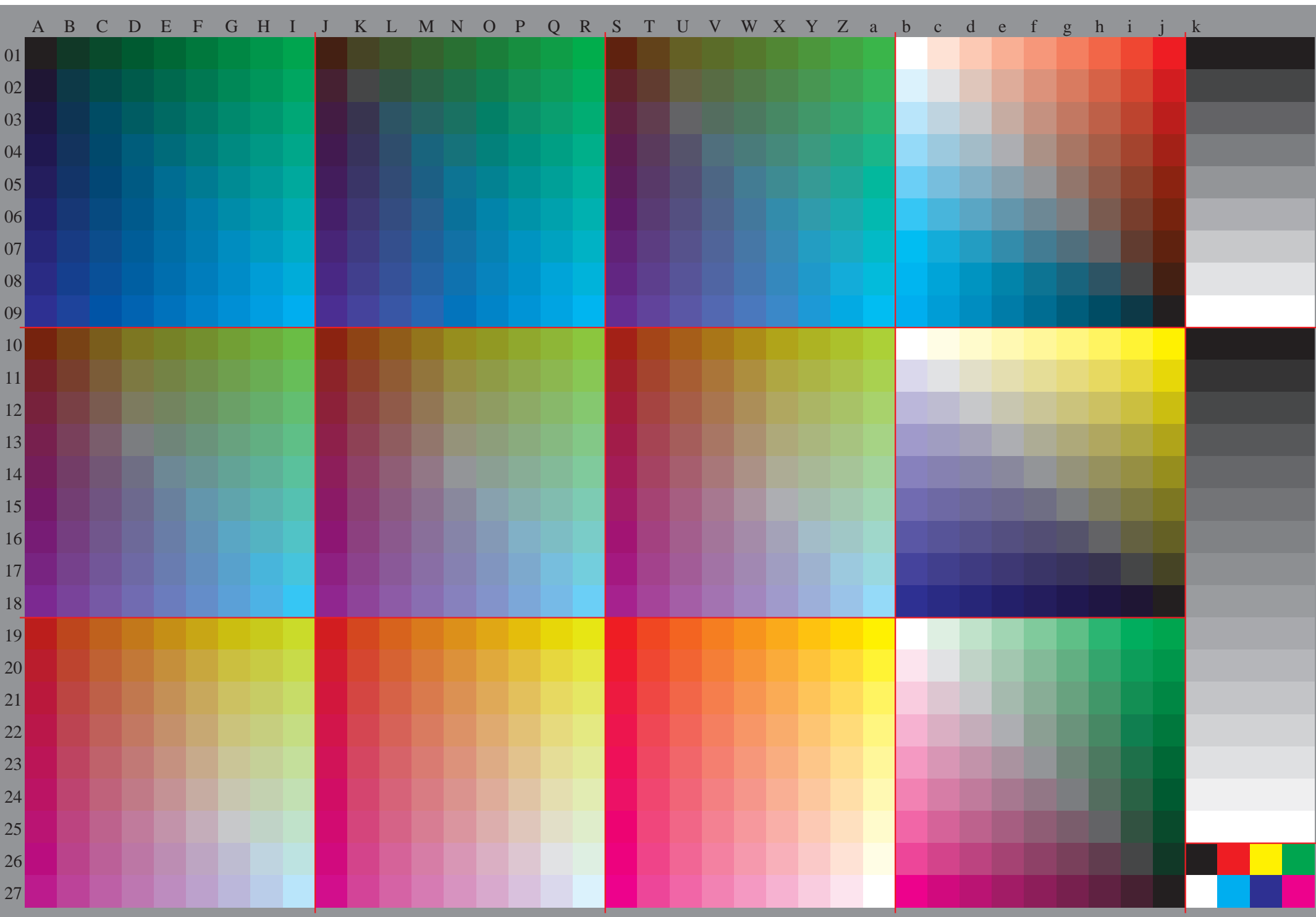


Table with columns A-Z and a-b and rows 01-27. The data is a grid of numerical values, likely representing a color calibration or texture map. The columns are labeled with letters and the rows are labeled with numbers. The values are small numbers, likely representing color channels or texture coordinates.

Table with 28 columns (A-Z, a-a) and 28 rows (01-27). Each cell contains numerical data. The last column is labeled 'LAB*LAB*a'. The table is divided into 28 horizontal sections, one for each row, with red vertical lines separating the columns.

A B C D E F G H I J K L M N O P Q R S T U V W X Y Z a b c d e f g h i j k lab*icu*e

Table with 27 rows and 28 columns. Each cell contains alphanumeric strings representing data points, such as '0.0', '0.130', '0.250', etc., often followed by a row and column identifier (e.g., '01', '02', '03').

