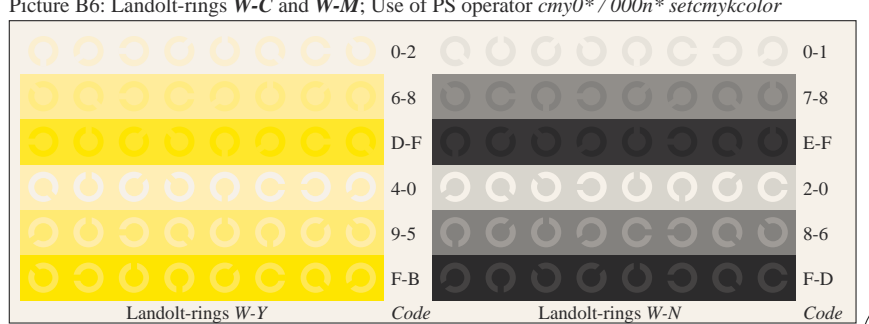
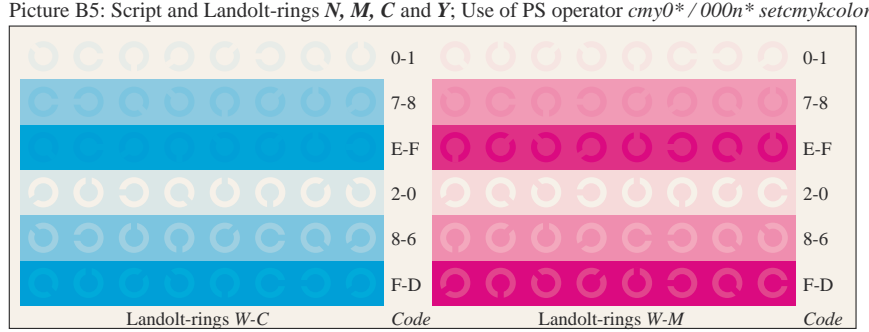
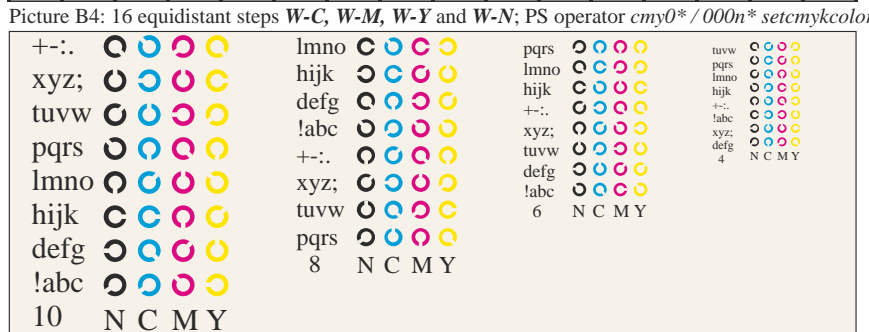
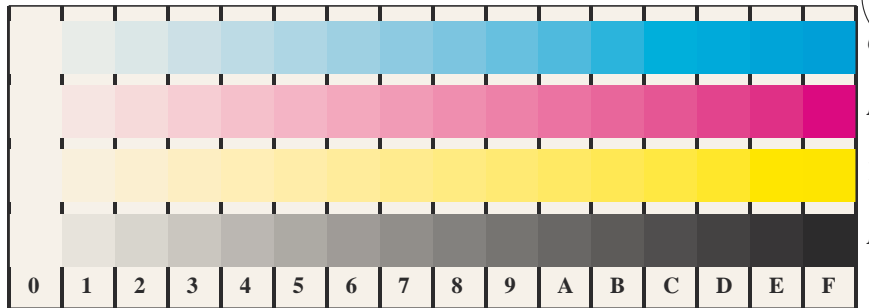


Picture B1: Flower motif, 14 CIE-test colours and 2 + 16 grey steps (sf); PS operators *settransfer*, *4 colorimage*  
 Picture B2: Radial gratings W-C, W-M, W-Y, W-N, and W-Z; PS operator *cmy0\*/000n\* setcmykcolor*  
 Picture B3: 14 CIE-test colours and 2 + 16 grey steps; Use of PS operator *cmy0\*/000n\* setcmykcolor*



Picture B4: 16 equidistant steps W-C, W-M, W-Y and W-N; PS operator *cmy0\*/000n\* setcmykcolor*  
 Picture B5: Script and Landolt-rings N, M, C and Y; Use of PS operator *cmy0\*/000n\* setcmykcolor*  
 Picture B6: Landolt-rings W-C and W-M; Use of PS operator *cmy0\*/000n\* setcmykcolor*  
 Picture B7: Landolt-rings W-Y and W-N; Use of PS operator *cmy0\*/000n\* setcmykcolor*