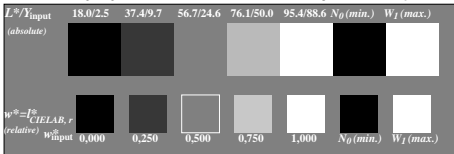
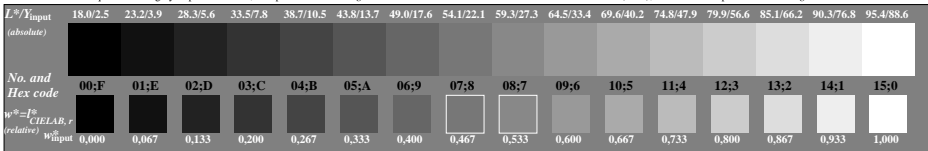


Picture C1: Radial gratings (Siemens-stars) N-W, W-N, N-Z and W-Z; PS operator: www* setrgbcolor



Picture C2: 5 visual equidistant L^* -grey steps + N_0 + W_1 ; PS operator: www* setrgbcolor

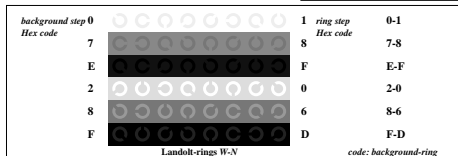


Picture C3: 16 visual equidistant L^* -grey steps; PS operator: www* setrgbcolor

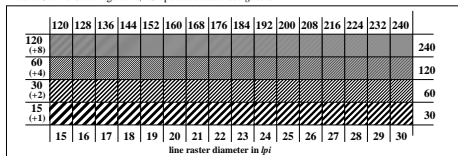
ISO/IEC-test chart no. 3 according to

ISO/IEC 15775 and
 DIS ISO/IEC 19839-X;

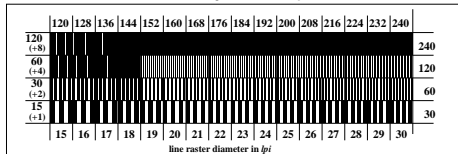
input: www*lin 1.0 exp setrgbcolor
 output: www*lin 1.0 exp setrgbcolor



Picture C4: Landolt-rings W-N; PS operator: www* setrgbcolor



Picture C5: Line raster under 45° (or 135°); PS operator: www* setrgbcolor



Picture C6: Line raster under 90° (or 0°); Use of the PS operator www* setrgbcolor

