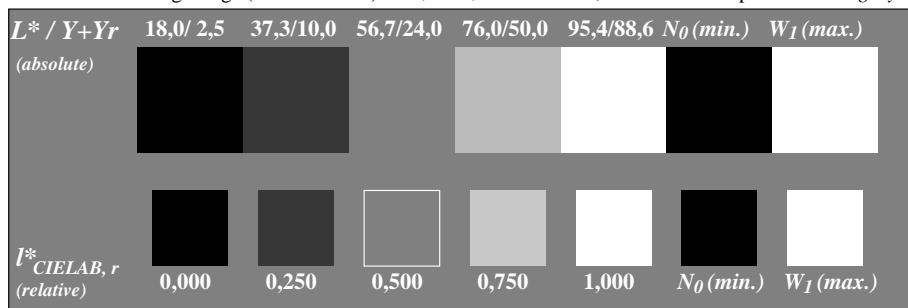
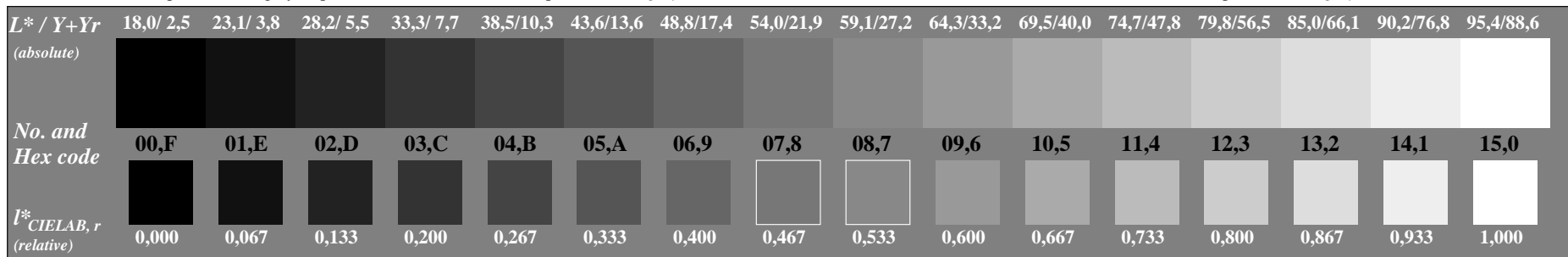


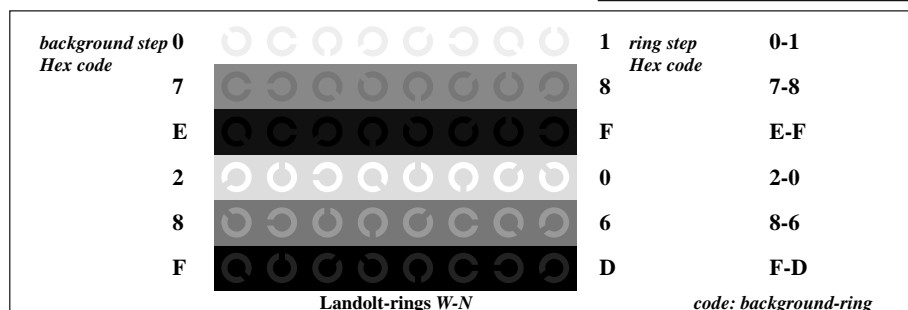
Picture C1: Radial gratings (Siemens-stars) N-W, W-N, N-Z and W-Z; Use of the PS operator  $w^* setgray$



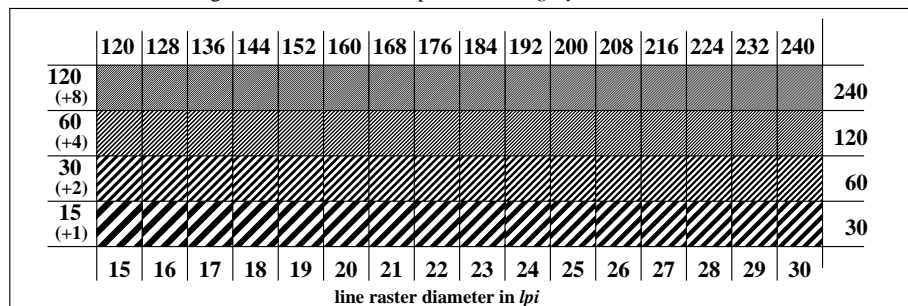
Picture C2: 5 visual equidistant  $L^*$ -grey steps +  $N_0$  +  $W_1$ ; Use of the PS operator  $w^* setgray$



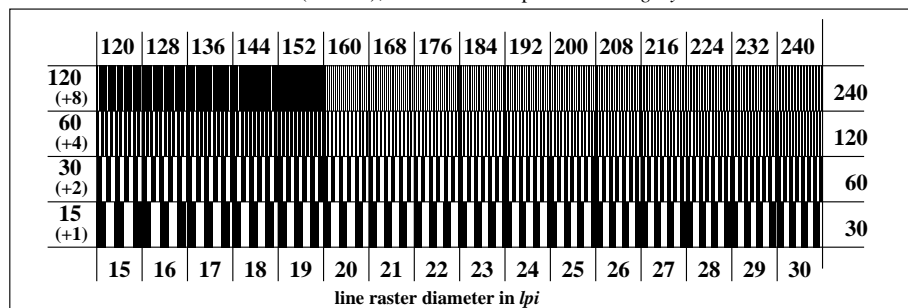
Picture C3: 16 visual equidistant  $L^*$ -grey steps; Use of the PS operator  $w^* setgray$



Picture C4: Landolt-rings W-N; Use of the PS operator  $w^* setgray$



Picture C5: Line raster under 45° (or 135°); Use of the PS operator  $w^* setgray$



Picture C6: Line raster under 90° (or 0°); Use of the PS operator  $w^* setgray$