

Information and Order: <http://www.ps.bam.de>

BAM registration: 20011015-DE50/10S/S50E00FA.PS/.TXT

BAM material: code=tha4ra

Image file version 1.5, 20011015-DE50

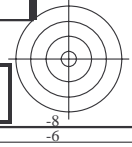
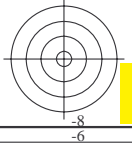
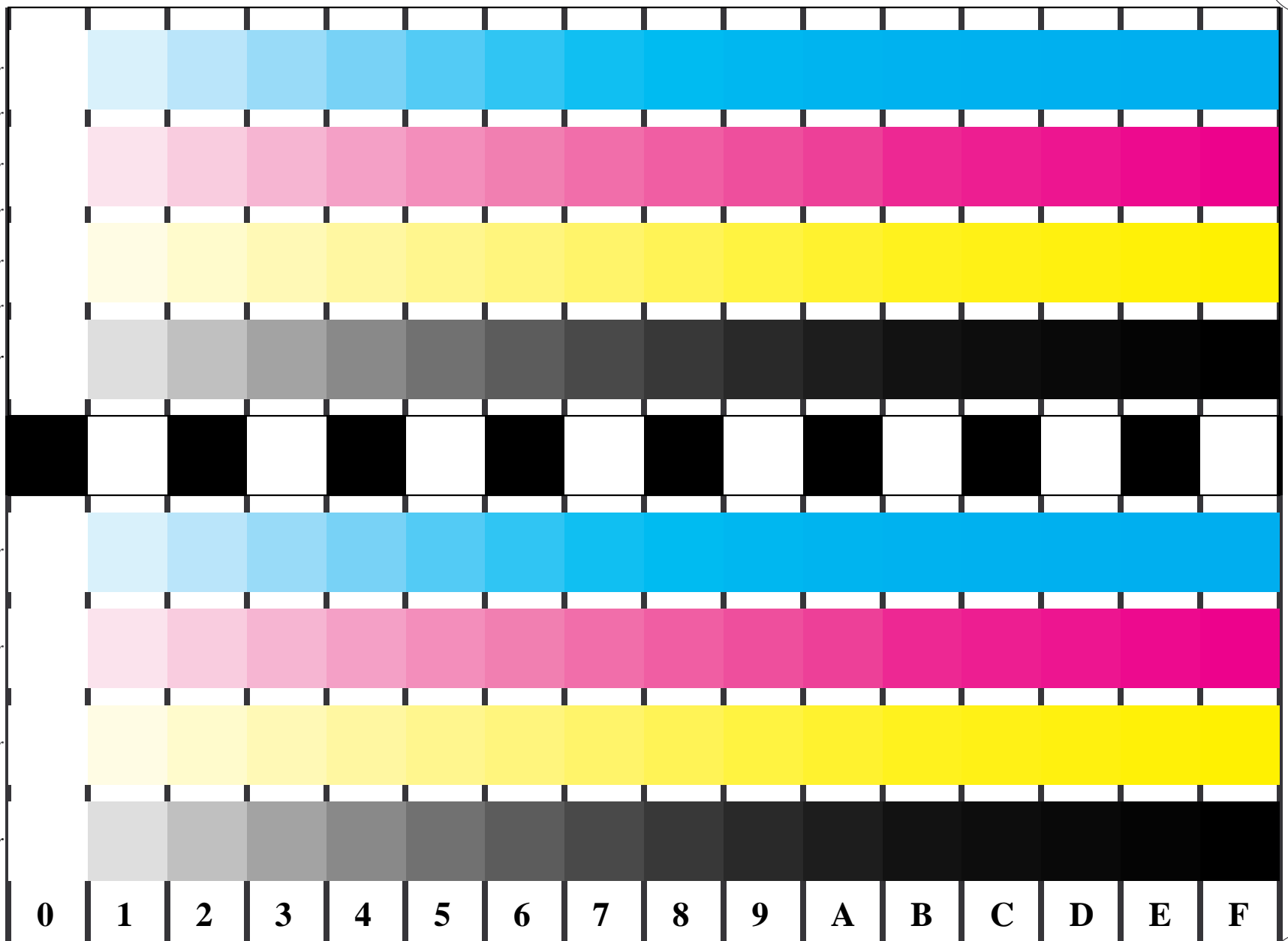


Figure B4 and/or D4 of the ISO/IEC-test charts;  $w^* - cmy_n^*$ ;  $w^* - olv(cmy)^*$ ; 16 visual equidistant steps of colour series:  $LAB^* \rightarrow \Delta LAB^*$ ; LM methods: N, F, S, D, T, E

16 colours according to ISO/IEC 15775 and 19839-X; setcolor -> setcmykcolor, setgray

