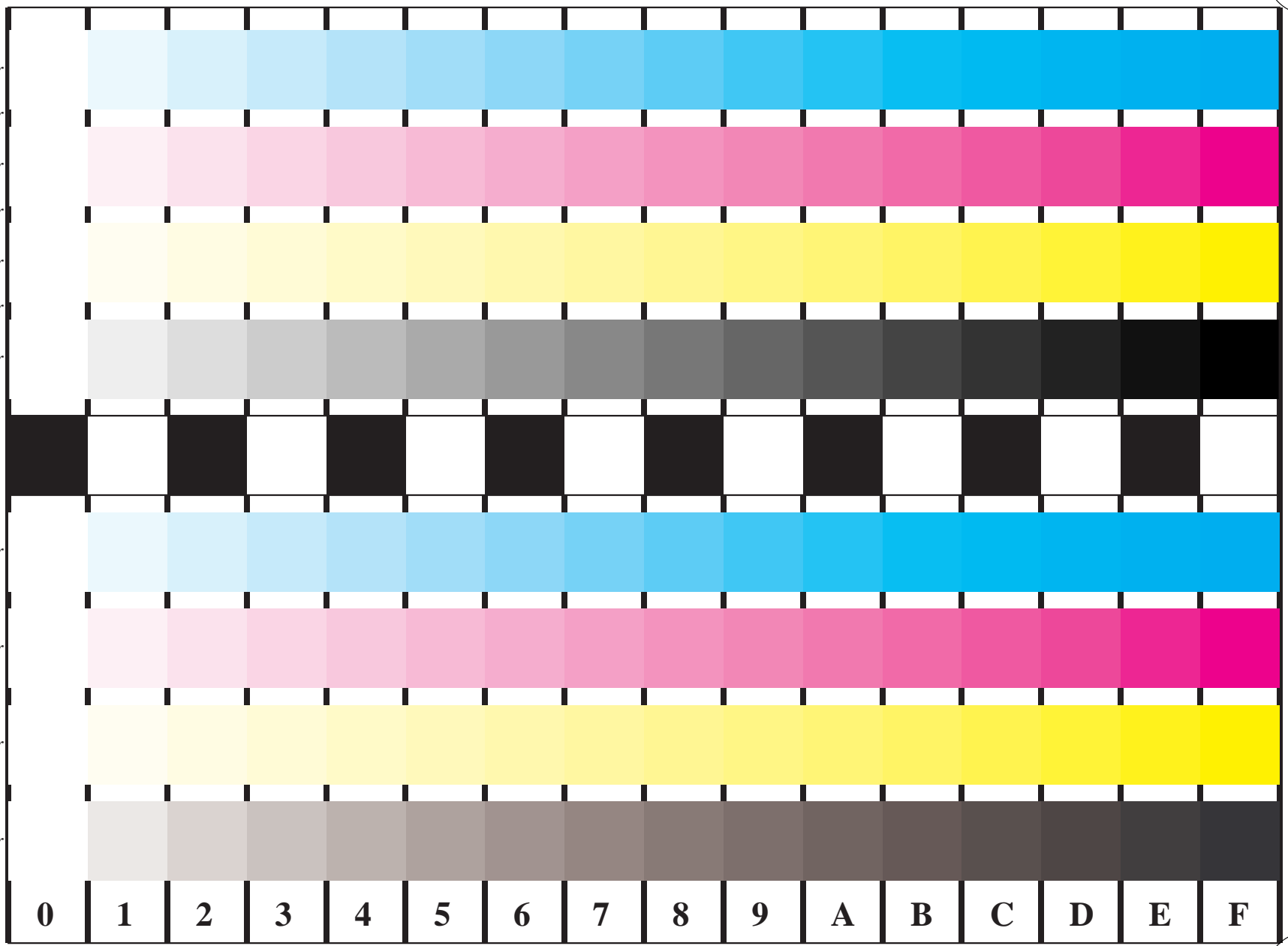


Information and Order: <http://www.ps.bam.de>

Image file version 1.5, 20011015-DE50

BAM registration: 20011015-DE50/10S/S50E00CP.PS/.PDF

BAM material: code=tha4ra



C: w\* - x c\*  
LAB\*(PR18) setcolor  
\_to\_cmy0\*PR18 ->  
cmy0\*S setcmykcolor

C: w\* - x m\*  
LAB\*(PR18) setcolor  
\_to\_cmy0\*PR18 ->  
cmy0\*S setcmykcolor

C: w\* - x y\*  
LAB\*(PR18) setcolor  
\_to\_cmy0\*PR18 ->  
cmy0\*S setcmykcolor

C: w\* - x n\*  
LAB\*(PR18) setcolor  
\_to\_cmy0\*PR18 ->  
w\* setgray

C: w\* - x c\*  
cmy0\*S setcmykcolor

C: w\* - x m\*  
cmy0\*S setcmykcolor

C: w\* - x y\*  
cmy0\*S setcmykcolor

C: w\* - x n\*  
cmy0\*S setcmykcolor

0 1 2 3 4 5 6 7 8 9 A B C D E F

Figure B4 and/or D4 of the ISO/IEC-test charts; w\* - cmy0\*; w\* - olv(cmy)\*; 16 visual equidistant steps of colour series: LAB\* -> ΔLAB\*; LM methods: N, F, S, D, T, E

