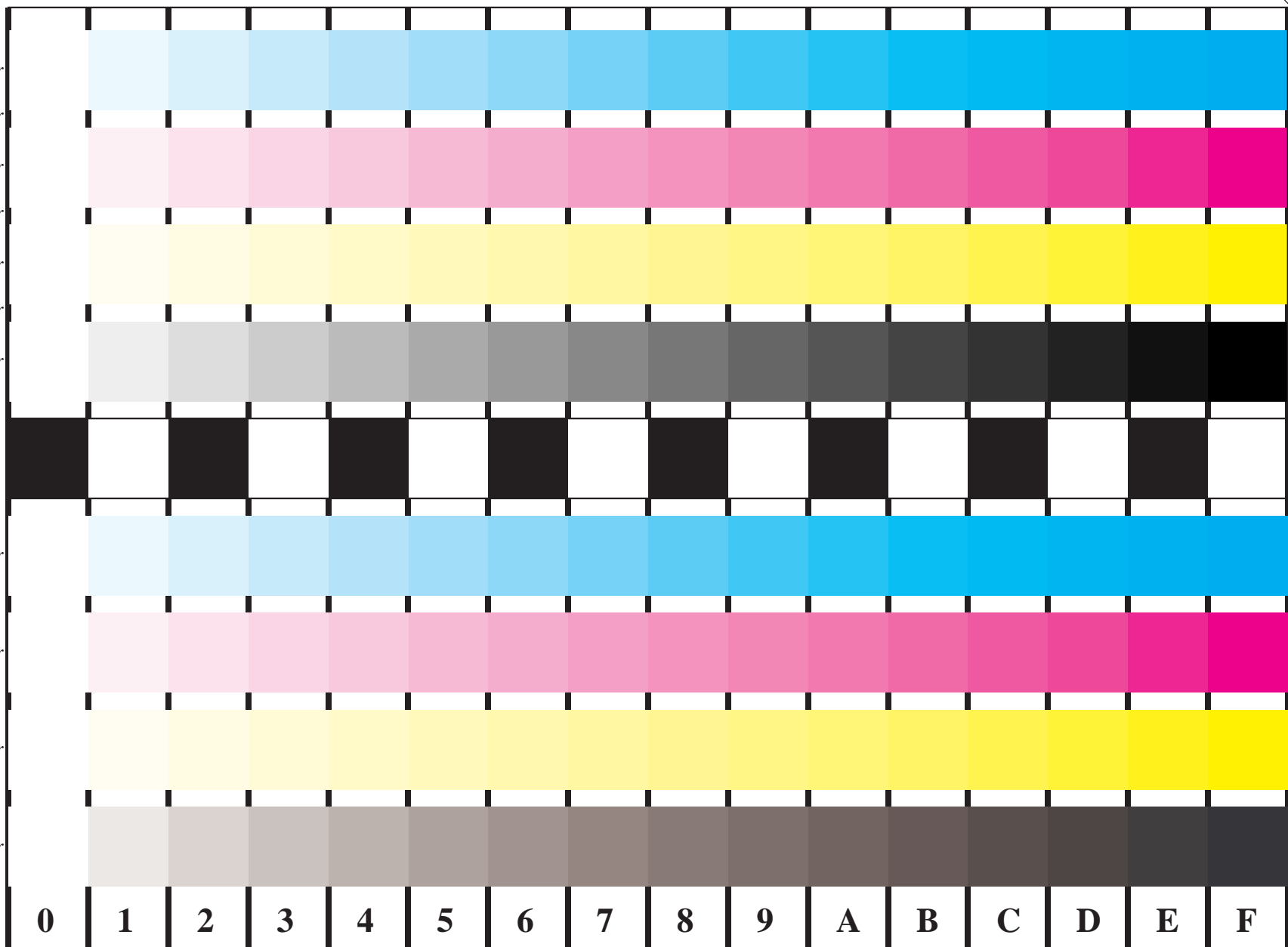


Information and Order: <http://www.ps.bam.de>  
 C: w\* - x c\*  
 LAB\*(PR18) setcolor  
 \_to\_cmy0\*PR18 ->  
 cmy0\*S setcmykcolor  
 C: w\* - x m\*  
 LAB\*(PR18) setcolor  
 \_to\_cmy0\*PR18 ->  
 cmy0\*S setcmykcolor  
 C: w\* - x y\*  
 LAB\*(PR18) setcolor  
 \_to\_cmy0\*PR18 ->  
 cmy0\*S setcmykcolor  
 C: w\* - x n\*  
 LAB\*(PR18) setcolor  
 \_to\_cmy0\*PR18 ->  
 w\* setgray

Image file version 1.5, 20011015-DE50  
 C: w\* - x c\*  
 cmy0\*S setcmykcolor  
 C: w\* - x m\*  
 cmy0\*S setcmykcolor  
 C: w\* - x y\*  
 cmy0\*S setcmykcolor  
 C: w\* - x n\*  
 cmy0\*S setcmykcolor



BAM registration: 20011015-DE50/10S/S50E00CA.PS/.TXT  
 BAM material: code=tha4ra

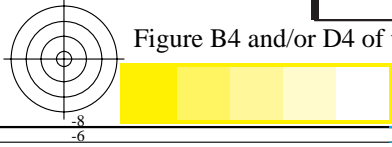


Figure B4 and/or D4 of the ISO/IEC-test charts; w\* - cmy\*; w\* - olv(cmy)\*; 16 visual equidistant steps of colour series: LAB\* -> ΔLAB\*; LM methods: N, F, S, D, T, E