

Information and Order: <http://www.ps.bam.de> Image file version 1.5, 20011015-DE50

BAM registration: 20011015-DE50/10Q/Q50E00FA.PS/.TXT BAM material: code=th4ra

F: w - x c**
LAB(PR18) setcolor*
*_to_cmy0*PR18 ->*
*cmy0*S setcmykcolor*

F: w - x m**
LAB(PR18) setcolor*
*_to_cmy0*PR18 ->*
*cmy0*S setcmykcolor*

F: w - x y**
LAB(PR18) setcolor*
*_to_cmy0*PR18 ->*
*cmy0*S setcmykcolor*

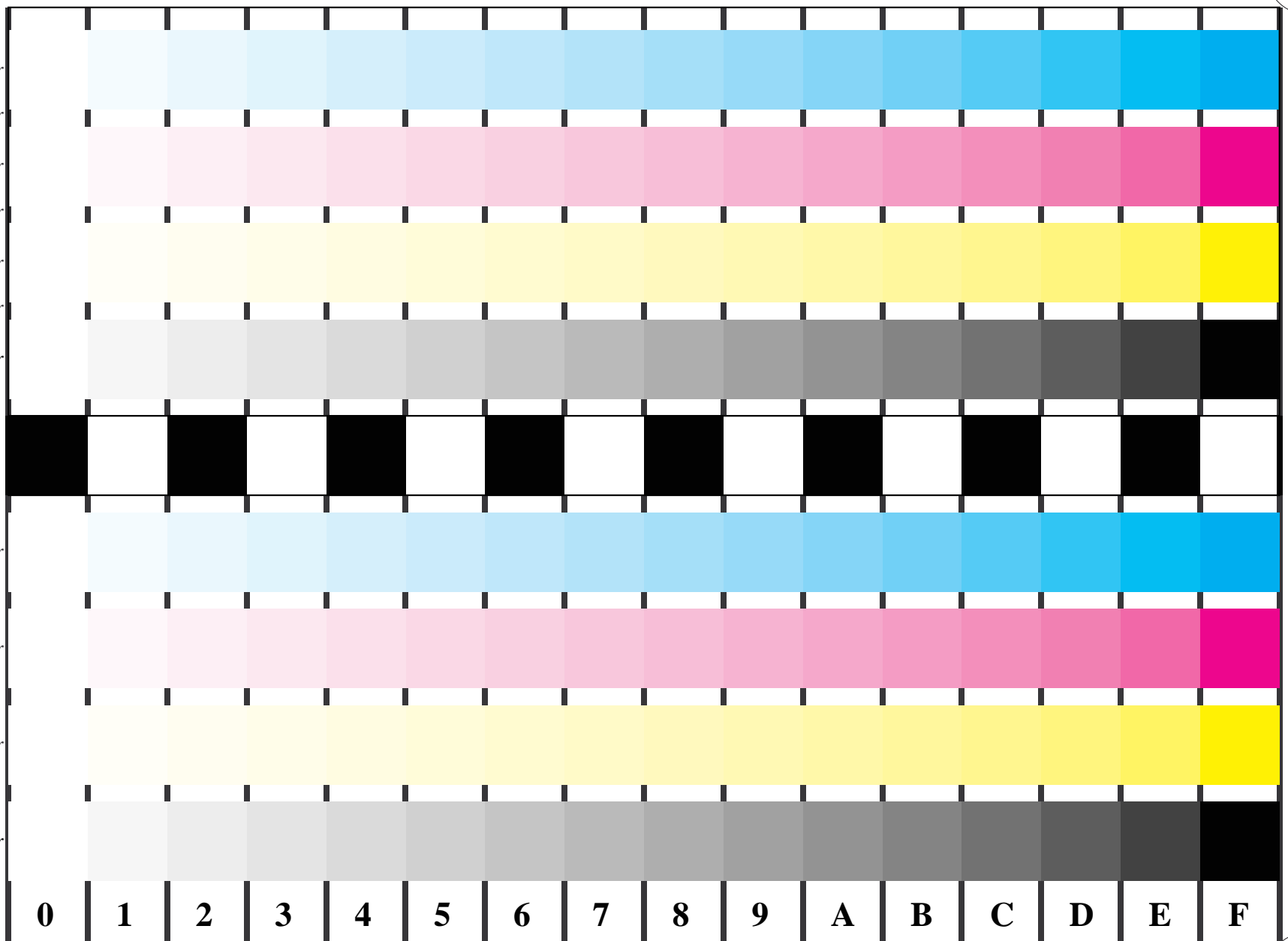
F: w - x n**
LAB(PR18) setcolor*
*_to_cmy0*PR18 ->*
w setgray*

F: w - x c**
*cmy0*S setcmykcolor*

F: w - x m**
*cmy0*S setcmykcolor*

F: w - x y**
*cmy0*S setcmykcolor*

F: w - x n**
*cmy0*S setcmykcolor*
-> w setgray*



0 1 2 3 4 5 6 7 8 9 A B C D E F

Figure B4 and/or D4 of the ISO/IEC-test charts; $w^* - cmy_n^*$; $w^* - olv(cmy)^*$; 16 visual equidistant steps of colour series: $LAB^* \rightarrow \Delta LAB^*$; LM methods: N, F, S, D, T, E

