

Information and Order: <http://www.ps.bam.de>

Image file version 1.5, 20011015-DE50

BAM registration: 20011015-DE50/10L/L50E00FP.PS/.PDF

BAM material: code=tha4ra

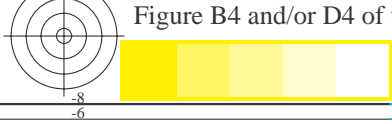
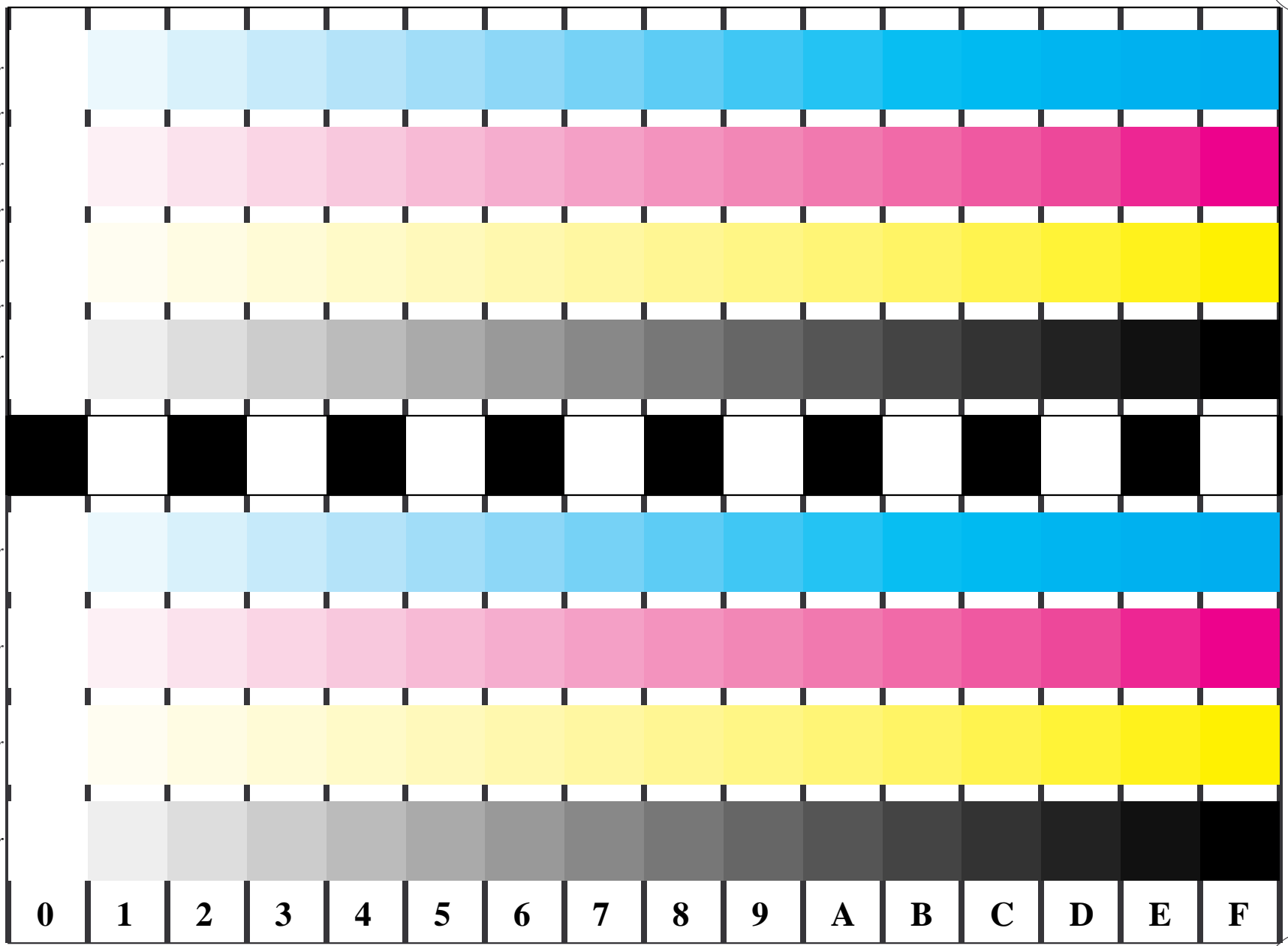


Figure B4 and/or D4 of the ISO/IEC-test charts; $w^* - cmy^n^*$; $w^* - olv(cmy)^*$; 16 visual equidistant steps of colour series: $LAB^* \rightarrow \Delta LAB^*$; LM methods: N, F, S, D, T, E

16 colours according to ISO/IEC 15775 and 19839-X; setcolor -> setcmykcolor, setgray

