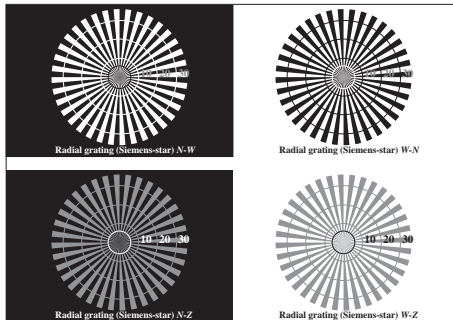
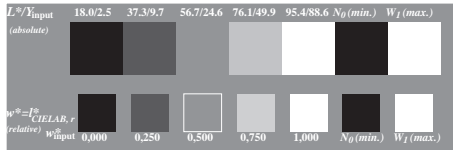


See for similar files: <http://www.ps.bam.de/CE99/>
 Technical information: <http://www.ps.bam.de/19752>

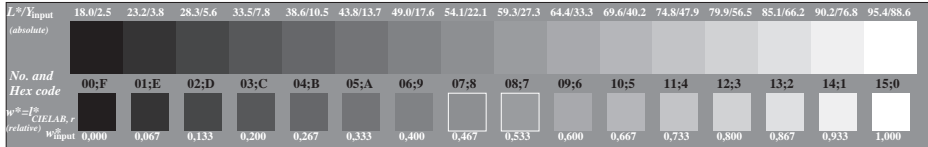
Version 2.0, io=00



Picture C1: Radial gratings (Siemens-stars) N-W, W-N, N-Z and W-Z; PS operator: 000n* setcmkycolor

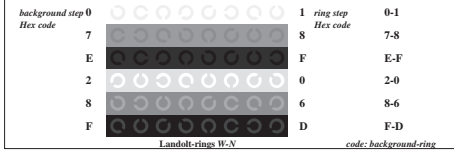


Picture C2: 5 visual equidistant L*-grey steps + N0 + W1; PS operator: 000n* setcmkycolor

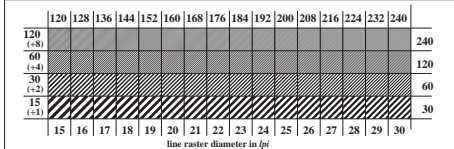


Picture C3: 16 visual equidistant L*-grey steps; PS operator: 000n* setcmkycolor

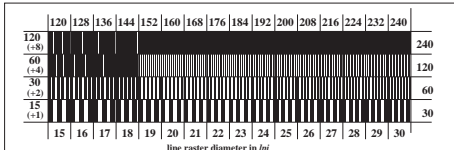
ISO/IEC 19752-test chart, form 3
 Proposal by DIN NI28



Picture C4: Landolt-rings W-N; PS operator: 000n* setcmkycolor



Picture C5: Line raster under 45° (or 135°); PS operator: 000n* setcmkycolor



Picture C6: Line raster under 90° (or 0°); Use of the PS operator 000n* setcmkycolor

BAM registration: 20030501-CE99/10L/L99E02N3.PS/.TXT BAM material: code=ha4ta
 application for yield test of monochromatic printers