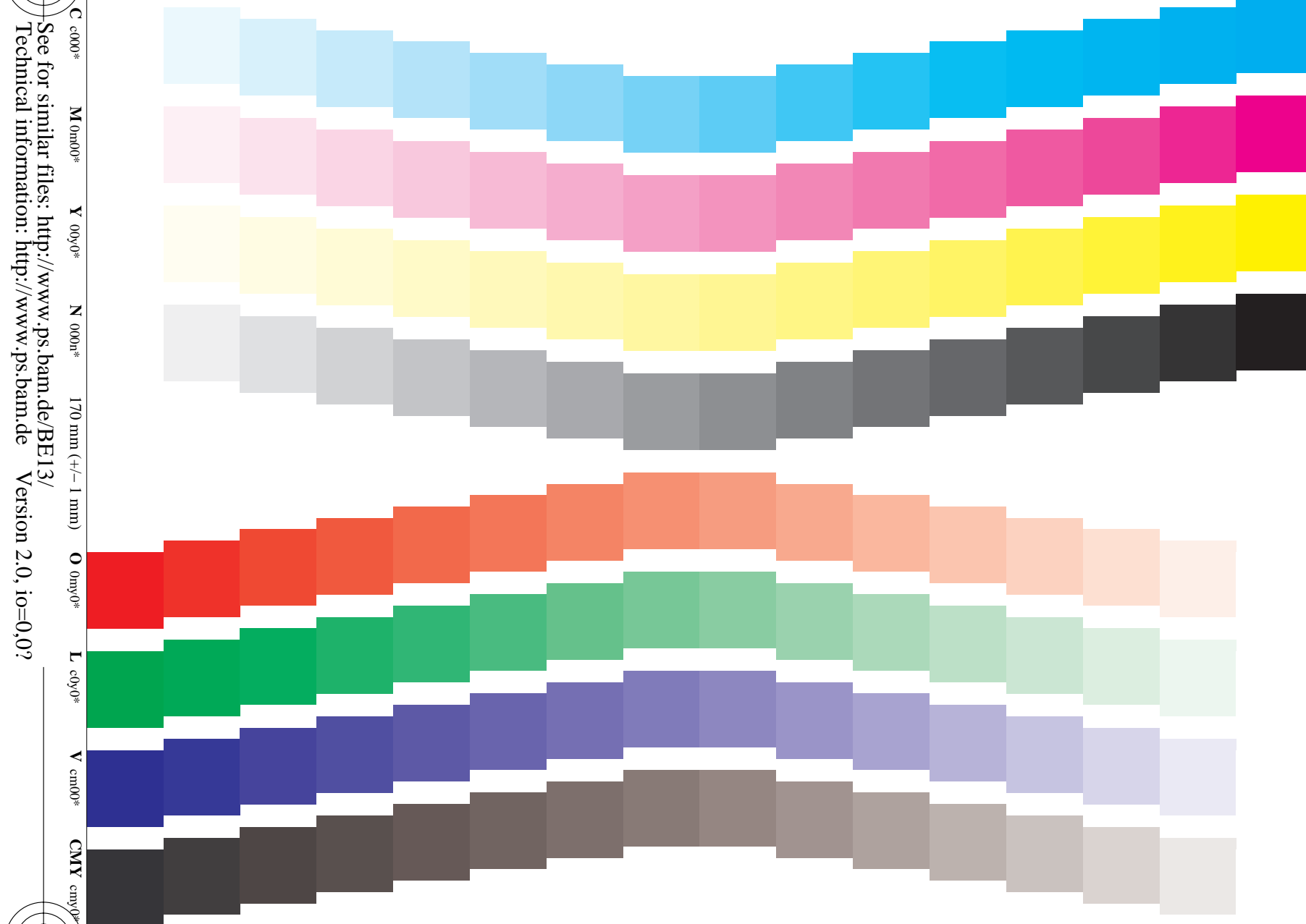


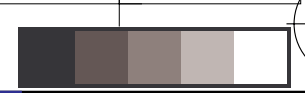
**Proposal: Test chart for yield and emission of colour toner modules and inkjet cartridges, PDF-Format**  
Date, Test person: 2004-05-01, Name  
Driver adjustment Paper:  
Resolution: Test device type: unknown  
Modus: black:  
coloured:  
Test paper:  
Driver version:

www.ps.bam.de/BE13/10Q/Q13E00SP.PS/.PDF;  
S: Output Linearization (OL) data BE13/10Q/Q13E00SP.DAT in Distiller Startup (S) Directory  
224 mm (+/- 1 mm)



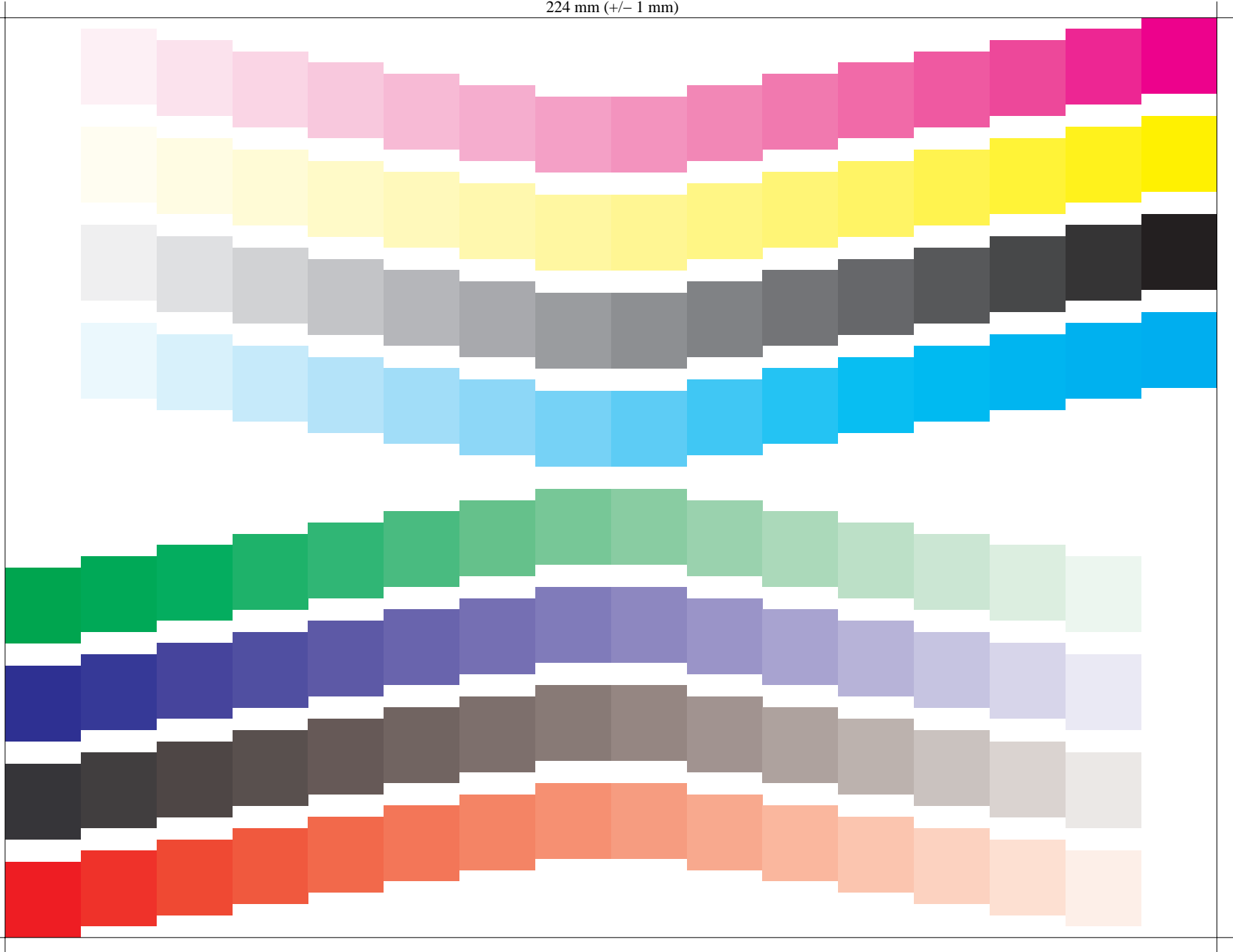
C c000\* M m000\* Y y000\* N n000\* 170 mm (+/- 1 mm) O omy0\* L lcy0\* V vm00\* CMY cmy0\*  
See for similar files: <http://www.ps.bam.de/BE13/>  
Technical information: <http://www.ps.bam.de> Version 2.0, io=0,0?

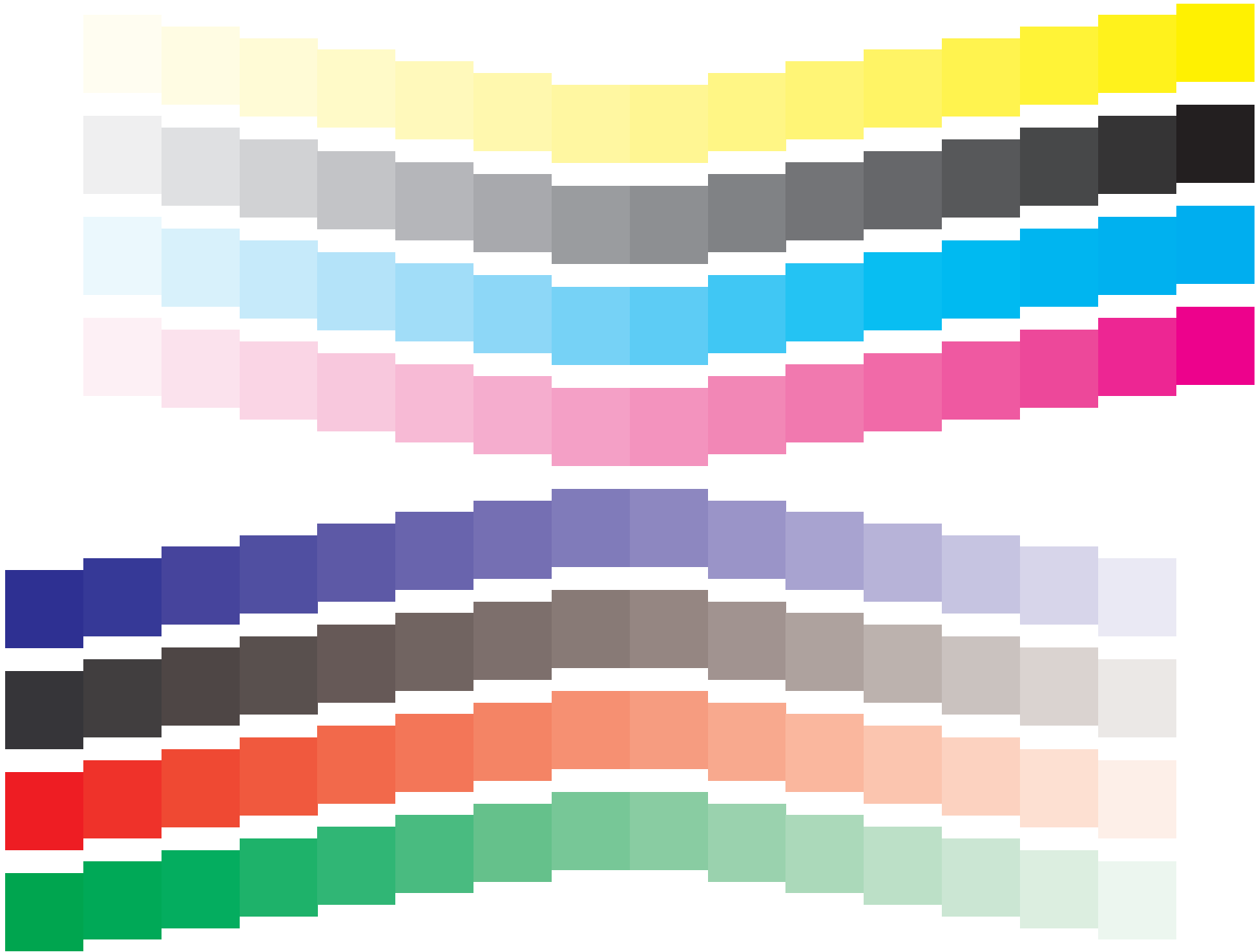
Fig. 1: Colour area 14 mm x 14 mm; Yield / Emission: 40% geometrical colour area coverage and 20% visual colour coverage; PS operator: cmy0\* / 000n\* setcmycolor  
BAM-test chart no. BE13 Step: S2 input: cmy0\* / 000n\* setcmycolor  
Yield/Emission: 40% geometrical and 20% visual area coverage output: Startup (S) data dependend

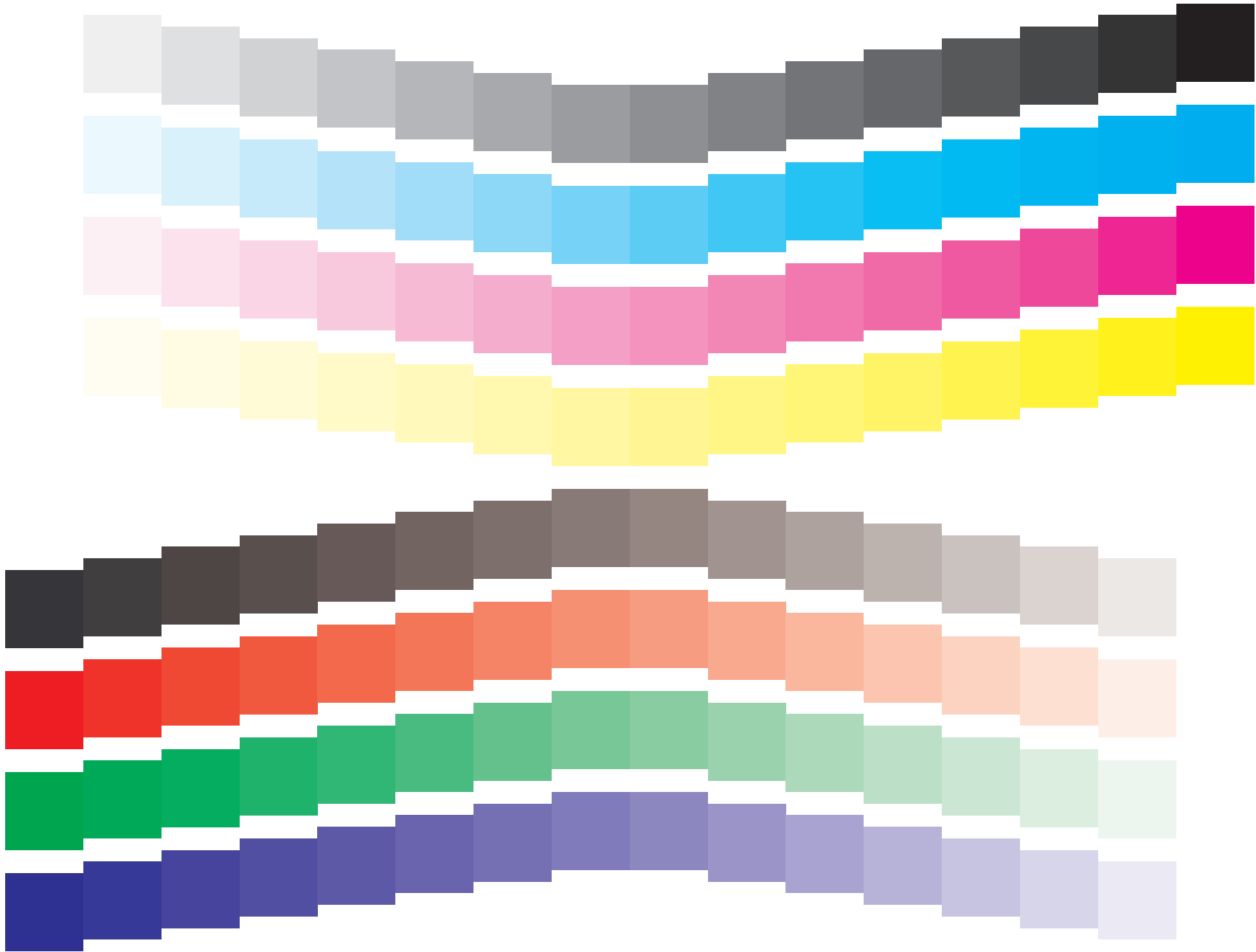


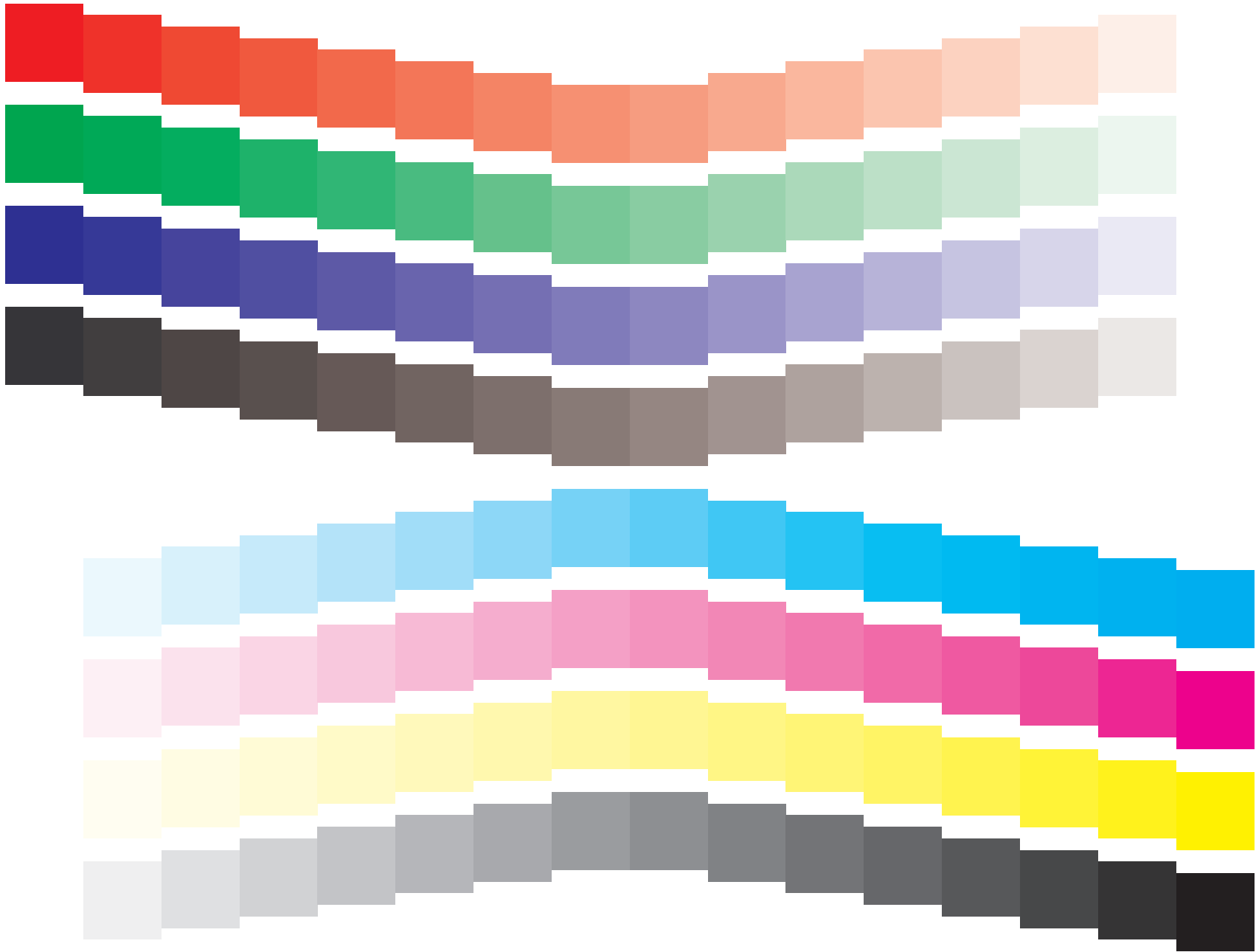
224 mm (+/- 1 mm)

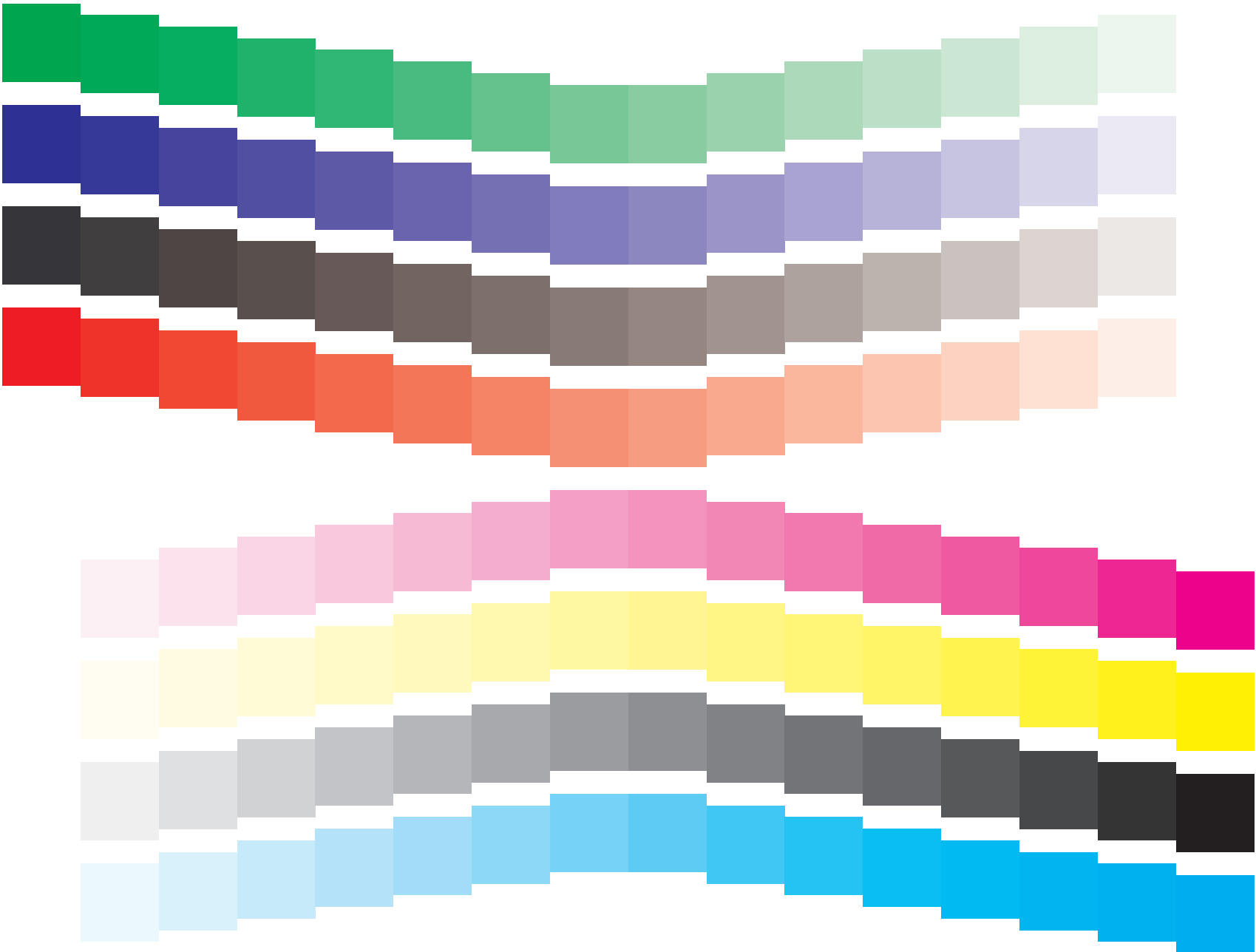
170 mm (+/- 1 mm)

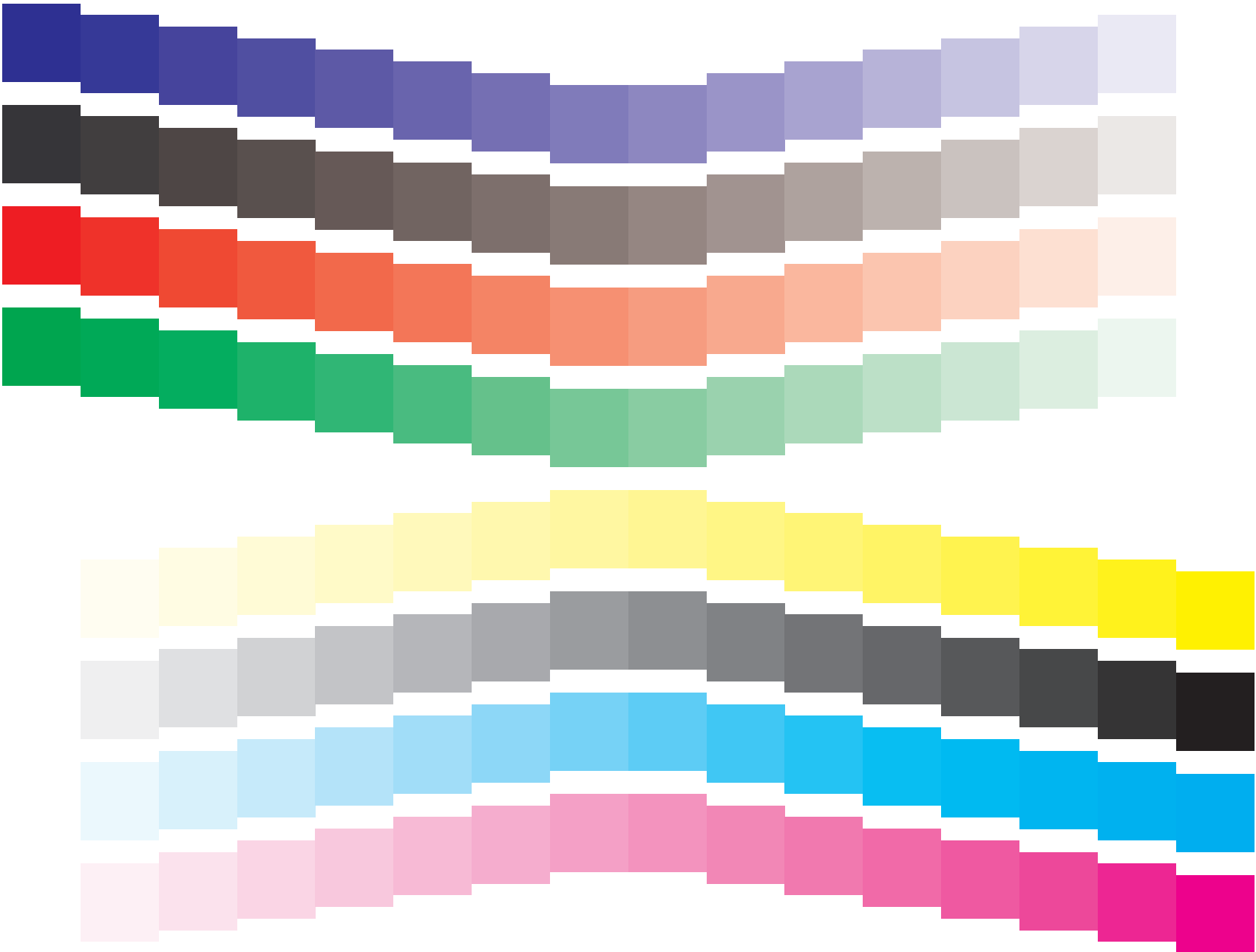


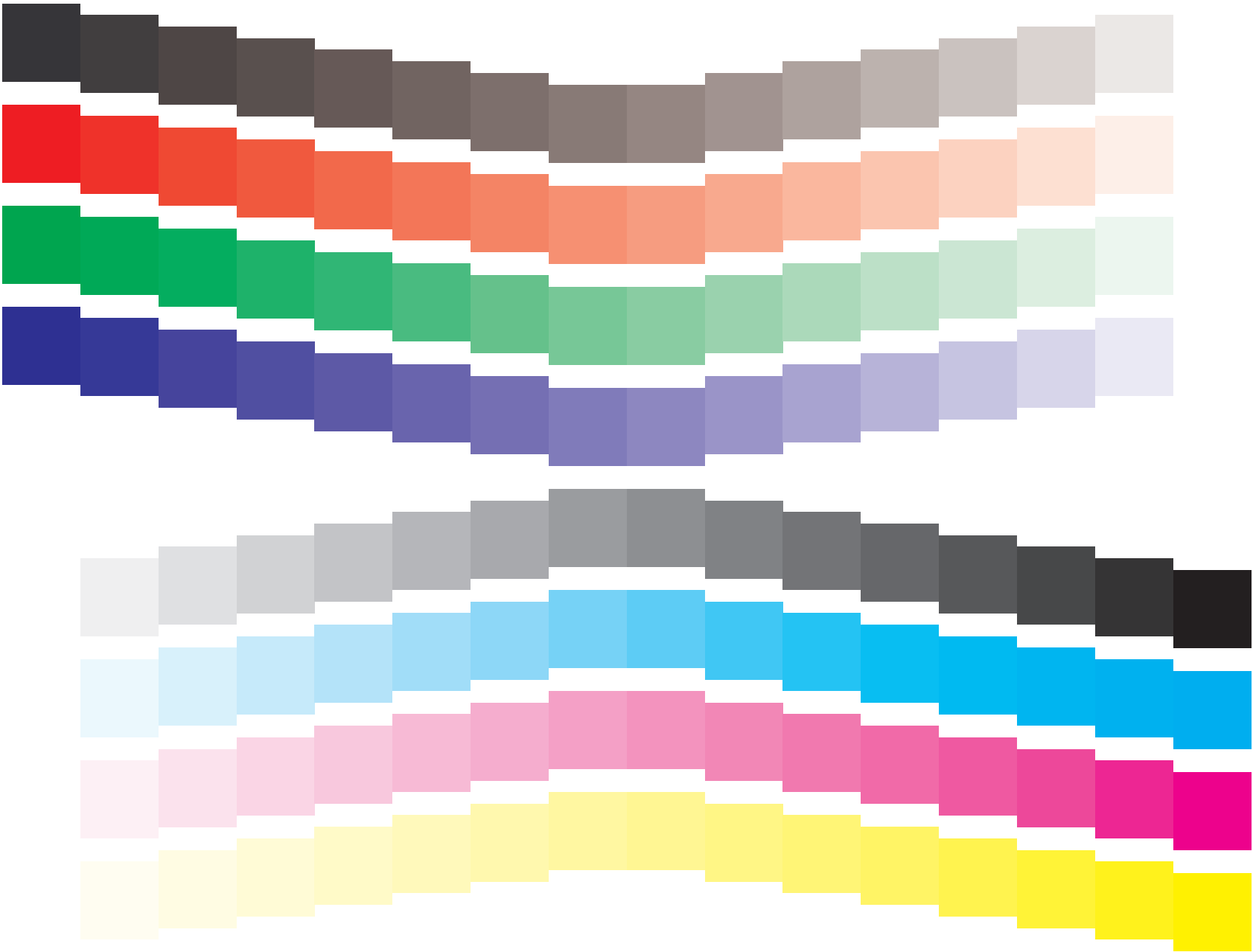








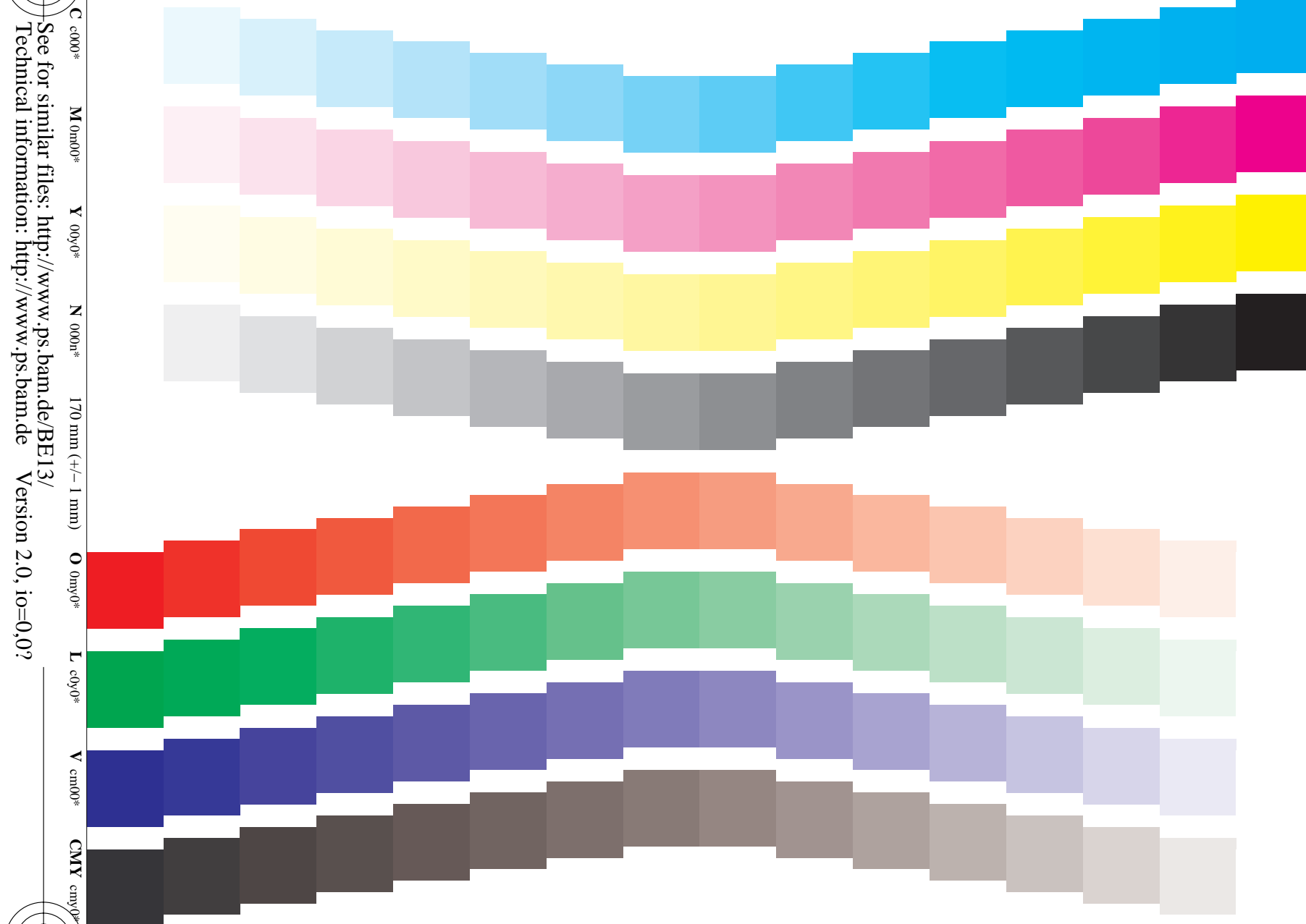






**Proposal: Test chart for yield and emission of colour toner modules and inkjet cartridges, PDF-Format**  
 Date, Test person: 2004-05-01, Name  
 Driver adjustment Paper:  
 Resolution: Test device type: unknown  
 Modus: Ink: black;  
 coloured:  
 Test paper:  
 Driver version:

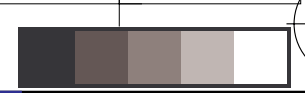
www.ps.bam.de/BE13/10Q/Q13E00SP.PS/.PDF;  
 S: Output Linearization (OL) data BE13/10Q/Q13E00SP.DAT in Distiller Startup (S) Directory  
 224 mm (+/- 1 mm)



C c000\* M 0m00\* Y 00y0\* N 000n\* 170 mm (+/- 1 mm) O 0my0\* L c0y0\* V cm00\* CMY cmy0\*

See for similar files: <http://www.ps.bam.de/BE13/>  
 Technical information: <http://www.ps.bam.de> Version 2.0, io=0,0?

Fig. 1: Colour area 14 mm x 14 mm; Yield / Emission: 40% geometrical colour area coverage and 20% visual colour coverage; PS operator: cmy0\* / 000n\* setcmycolor  
 BAM-test chart no. BE13 Step: S2 input: cmy0\* / 000n\* setcmycolor  
 Yield/Emission: 40% geometrical and 20% visual area coverage output: Startup (S) data dependend



224 mm (+/- 1 mm)

170 mm (+/- 1 mm)

