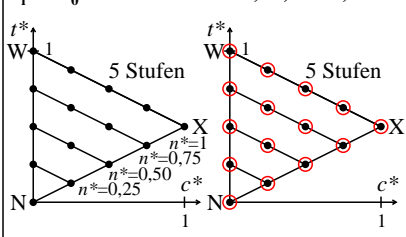
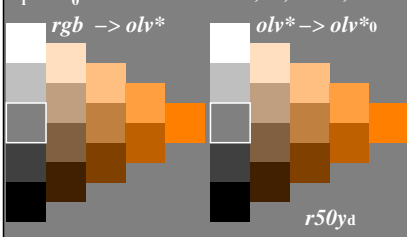


**Farbmetrische Transformation  $i = 0$**   
 $c_i^* = c_0^* = a c^{*b}$  mit  $a = 1,00$ ;  $b = 1,00$



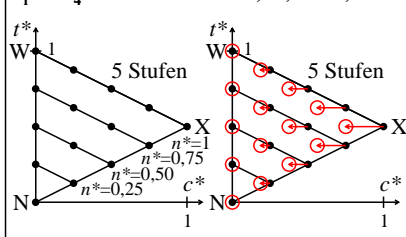
figu21-7r

**Farbmetrische Transformation  $i = 0$**   
 $c_i^* = c_0^* = a c^{*b}$  mit  $a = 1,00$ ;  $b = 1,00$



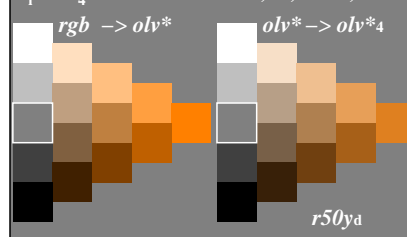
figu20-2a

**Farbmetrische Transformation  $i = 4$**   
 $c_i^* = c_4^* = a c^{*b}$  mit  $a = 0,75$ ;  $b = 1,00$



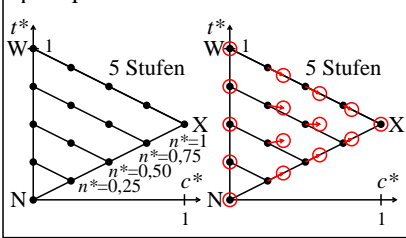
figu21-7r

**Farbmetrische Transformation  $i = 4$**   
 $c_i^* = c_4^* = a c^{*b}$  mit  $a = 0,75$ ;  $b = 1,00$



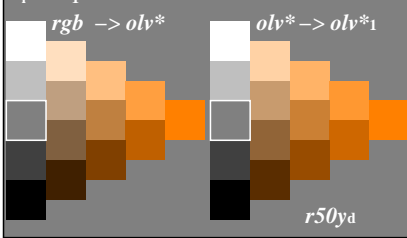
figu21-2a

**Farbmetrische Transformation  $i = 1$**   
 $c_i^* = c_1^* = a c^{*b}$  mit  $a = 1,00$ ;  $b = 0,75$



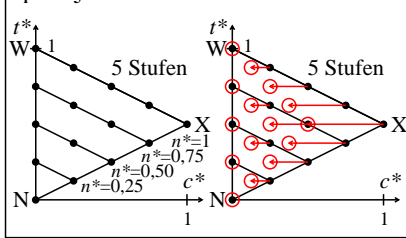
figu21-7r

**Farbmetrische Transformation  $i = 1$**   
 $c_i^* = c_1^* = a c^{*b}$  mit  $a = 1,00$ ;  $b = 0,75$



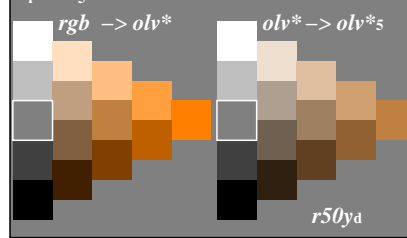
figu20-4a

**Farbmetrische Transformation  $i = 5$**   
 $c_i^* = c_5^* = a c^{*b}$  mit  $a = 0,50$ ;  $b = 1,00$



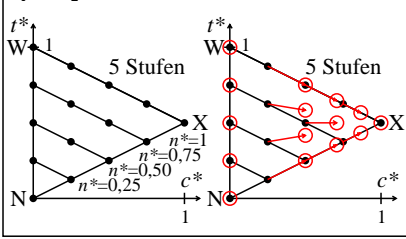
figu21-7r

**Farbmetrische Transformation  $i = 5$**   
 $c_i^* = c_5^* = a c^{*b}$  mit  $a = 0,50$ ;  $b = 1,00$



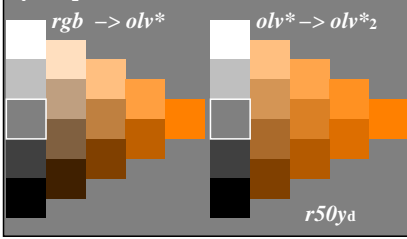
figu21-4a

**Farbmetrische Transformation  $i = 2$**   
 $c_i^* = c_2^* = a c^{*b}$  mit  $a = 1,00$ ;  $b = 0,50$



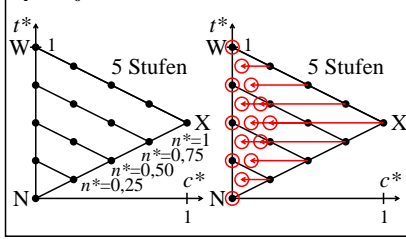
figu21-7r

**Farbmetrische Transformation  $i = 2$**   
 $c_i^* = c_2^* = a c^{*b}$  mit  $a = 1,00$ ;  $b = 0,50$



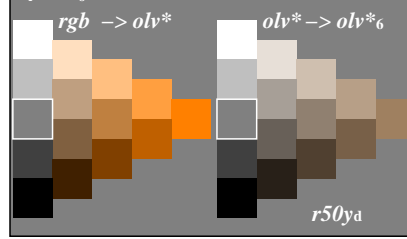
figu20-6a

**Farbmetrische Transformation  $i = 6$**   
 $c_i^* = c_6^* = a c^{*b}$  mit  $a = 0,25$ ;  $b = 1,00$



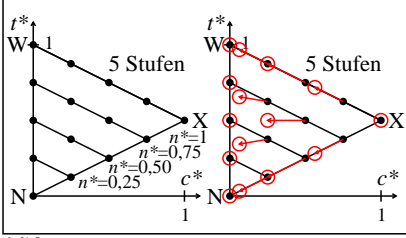
figu21-7r

**Farbmetrische Transformation  $i = 6$**   
 $c_i^* = c_6^* = a c^{*b}$  mit  $a = 0,25$ ;  $b = 1,00$



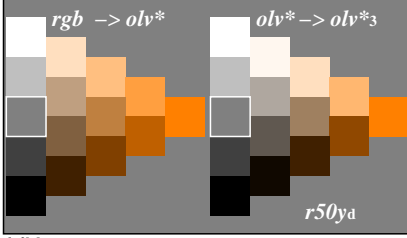
figu21-6a

**Farbmetrische Transformation  $i = 3$**   
 $c_i^* = c_3^* = a c^{*b}$  mit  $a = 1,00$ ;  $b = 2,00$



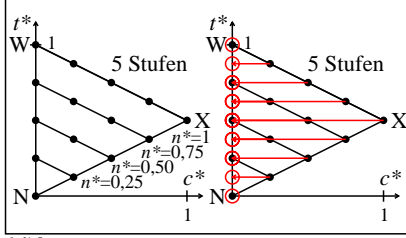
figu21-7r

**Farbmetrische Transformation  $i = 3$**   
 $c_i^* = c_3^* = a c^{*b}$  mit  $a = 1,00$ ;  $b = 2,00$



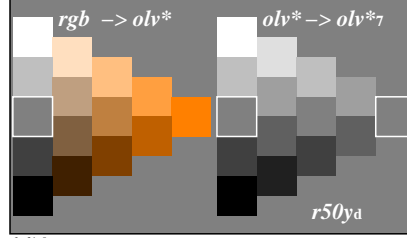
figu20-8a

**Farbmetrische Transformation  $i = 7$**   
 $c_i^* = c_7^* = a c^{*b}$  mit  $a = 0,00$ ;  $b = 1,00$



figu21-7r

**Farbmetrische Transformation  $i = 7$**   
 $c_i^* = c_7^* = a c^{*b}$  mit  $a = 0,00$ ;  $b = 1,00$



figu21-8a

Siehe ähnliche Dateien der ganzen Serie: <http://farbe.li.tu-berlin.de/fgu2/fgu210na.txt> /ps  
 Technische Information: <http://farbe.li.tu-berlin.de> oder <http://color.li.tu-berlin.de>

TUB-Registrierung: 20240201-figu2/fgu210na.txt /ps  
 Anwendung für Beurteilung und Messung von Display- oder Druck-Ausgabe  
 TUB-Material: Code=rh4ta