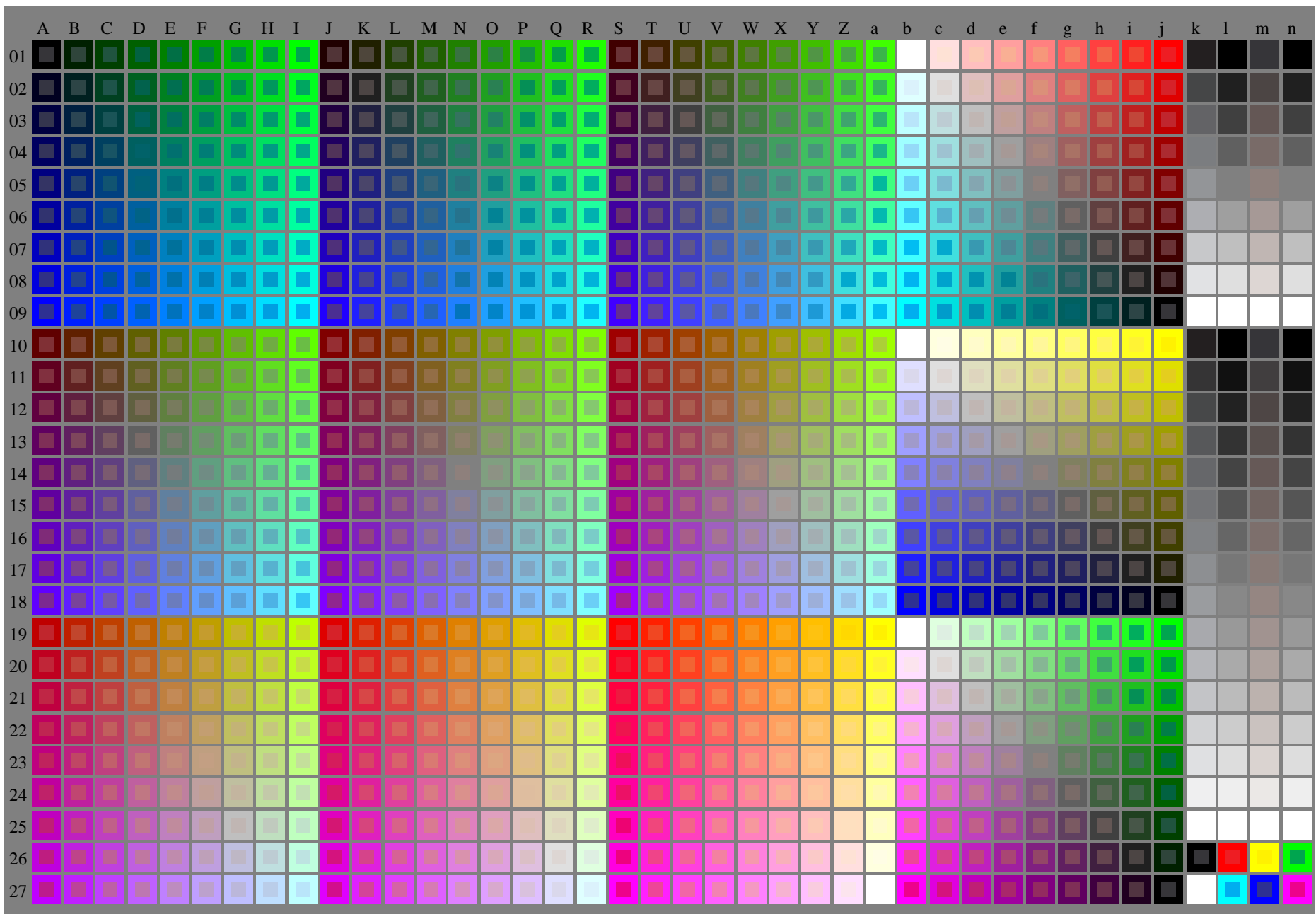


see similar files of the whole serie: <http://farbe.li.tu-berlin.de/fevs.htm>  
technical information: <http://farbe.li.tu-berlin.de> or <http://color.li.tu-berlin.de>

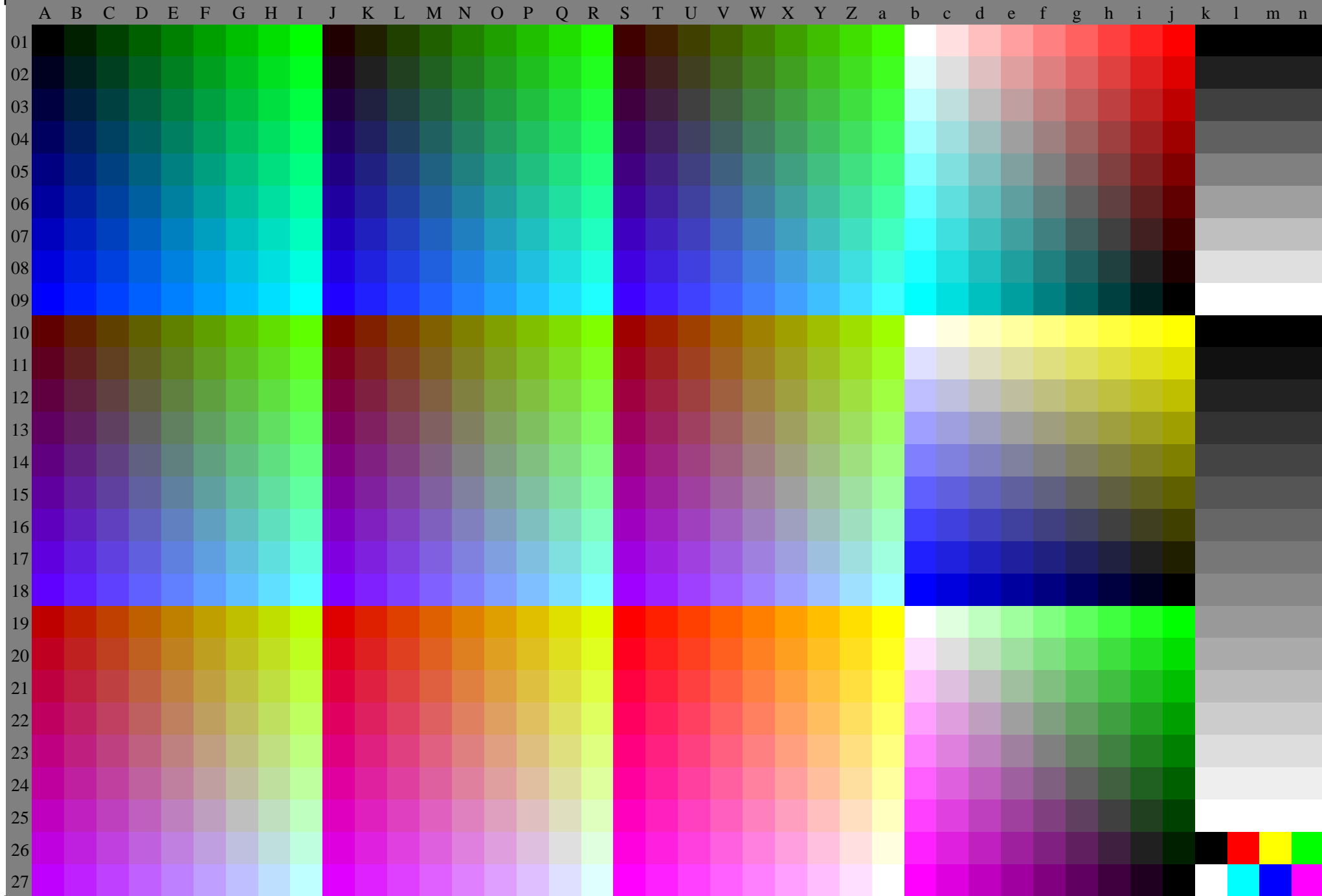
TUB registration: 20240201-fev8/fev810na.txt /ps  
application for evaluation and measurement of display or print output

TUB material: code=rh4ta



fev80-7n, 1/11, Test chart G with 40x27=1080 colours; digital equidistant 9 or 16 step colour scales; Colour data in column (A-n):  $rgb + cmy0(A_j + k26\_n27), 000n(k), w(l), nnn0(m), www(n), colorm = 0, separation = A$   
TUB-test chart fev8; Colorimetric system G  
40x27=1080 colours for output or measurement:  
input:  $(rgb/000n/w/nnn0/www)_d \rightarrow rgb*_d$   
output: no change compared to input





Test chart G with 40x27=1080 colours; digital equidistant 9 or 16 step colour scales; Colour data in column (A\_n), colorm = 0, separation = F

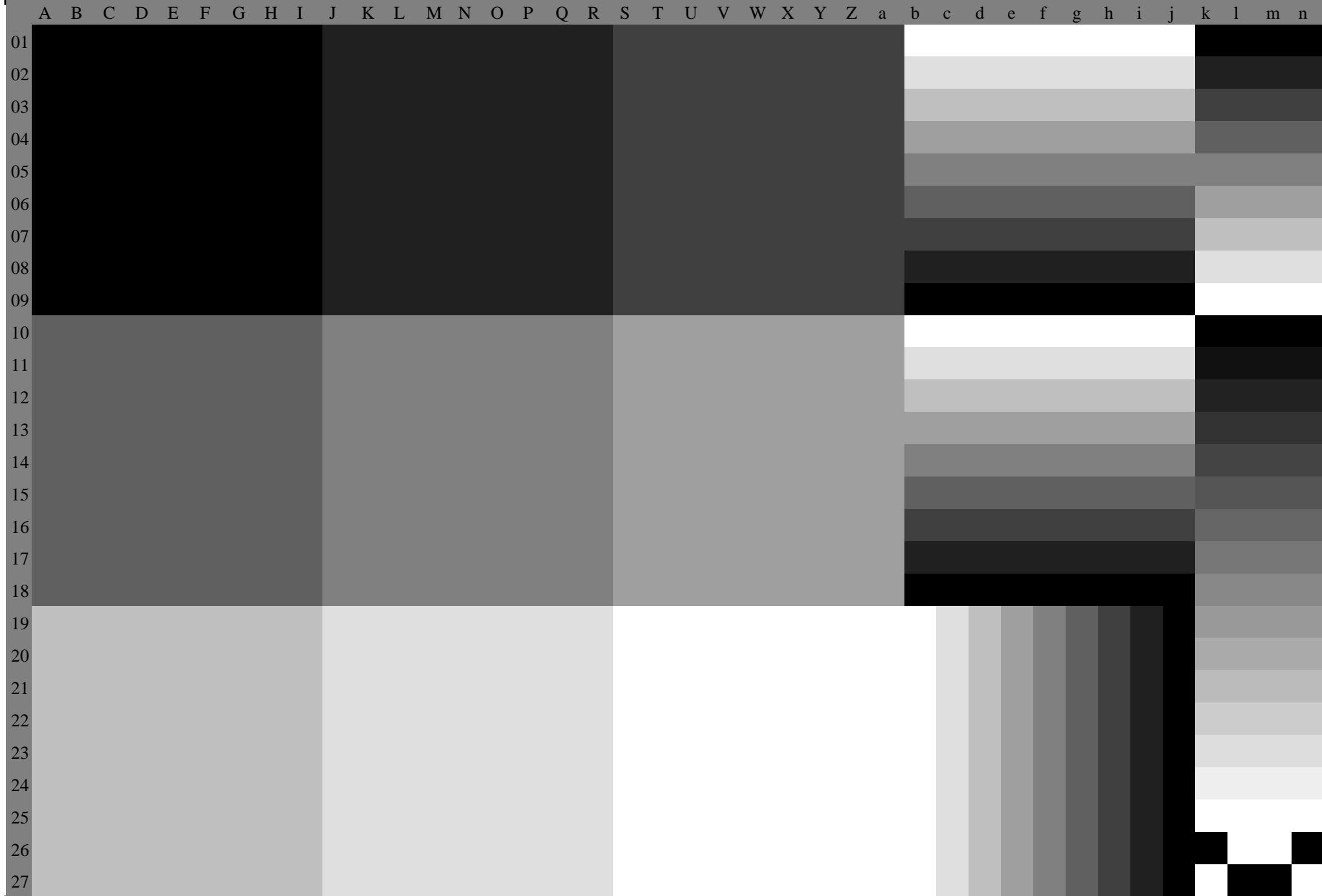






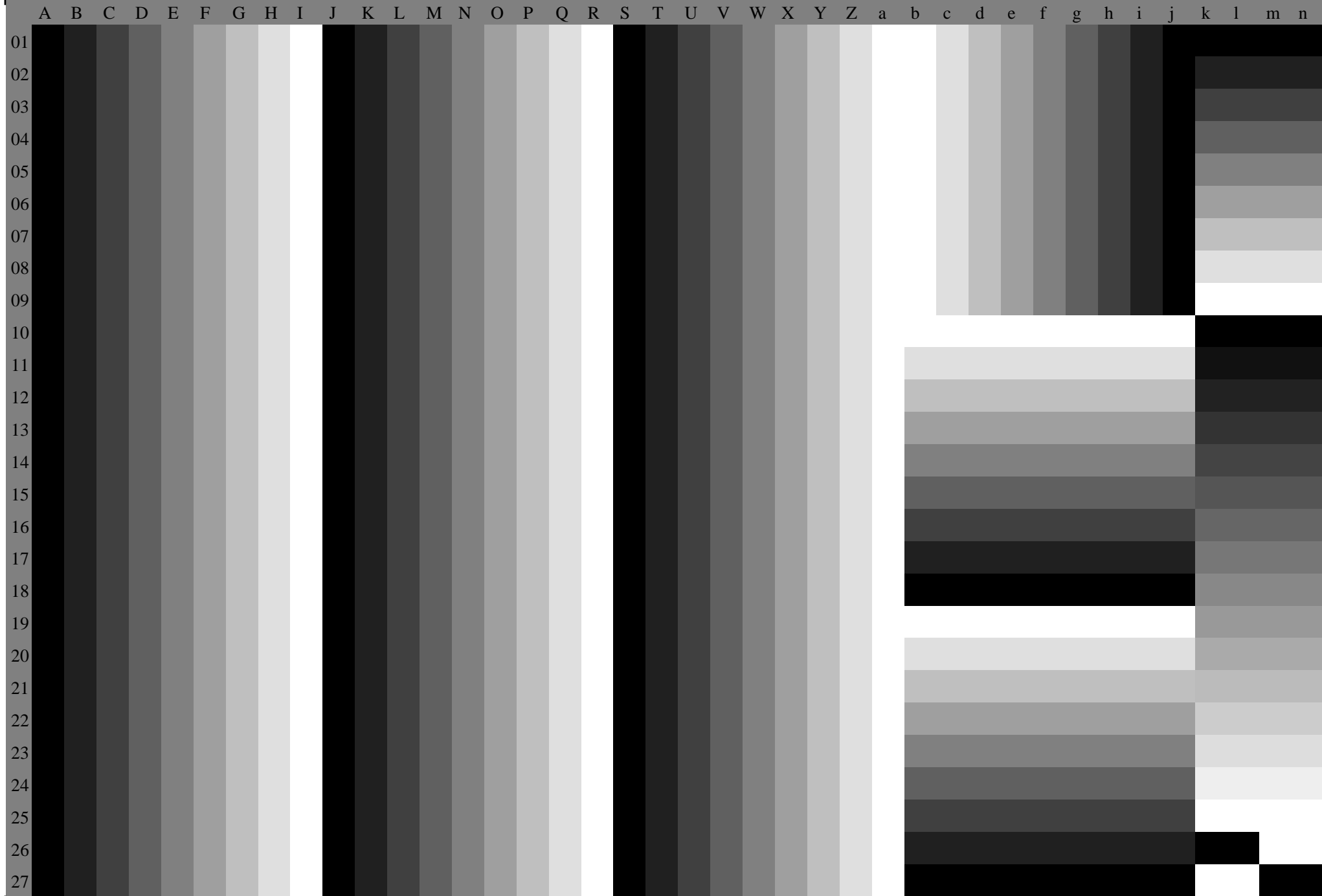
Form 80-7n, 6/11, Test chart G with 40x27=1080 colours; digital equidistant 9 or 16 step colour scales; Colour data in column (A\_n), colorm = 0, separation = F

Table with 28 columns (A-n) and 28 rows (01-27). Each cell contains a small color patch with a numerical value (e.g., 01, 02, 03, 04, 05, 06, 07, 08, 09, 10, 11, 12, 13, 14, 15, 16, 17, 18, 19, 20, 21, 22, 23, 24, 25, 26, 27) and a corresponding color swatch. The colors transition through a spectrum from blue to red, green, and yellow.

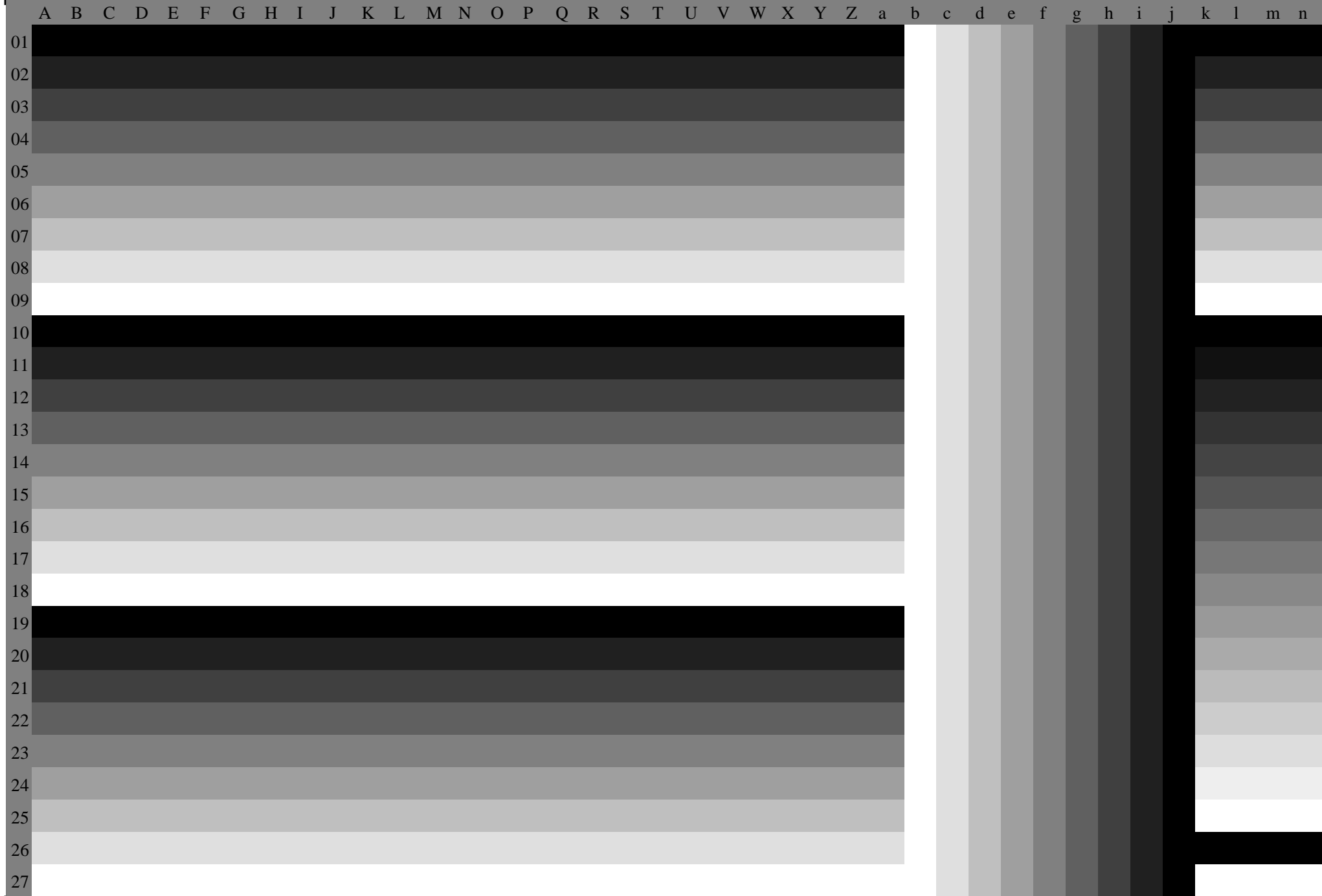


Form 80-7n, 8/11, Test chart G with 40x27=1080 colours; digital equidistant 9 or 16 step colour scales; Colour data in column (A-n): **c(A\_n), colorm = 0, separation = C**





Test chart G with 40x27=1080 colours; digital equidistant 9 or 16 step colour scales; Colour data in column (A-n): **m** (A\_n), **colorm** = 0, **separation** = M



ISO 1011, Test chart G with 40x27=1080 colours; digital equidistant 9 or 16 step colour scales; Colour data in column (A-n): **y (A\_n), colorm = 0, separation = Y**

A B C D E F G H I J K L M N O P Q R S T U V W X Y Z a b c d e f g h i j k l m n

01  
02  
03  
04  
05  
06  
07  
08  
09  
10  
11  
12  
13  
14  
15  
16  
17  
18  
19  
20  
21  
22  
23  
24  
25  
26  
27