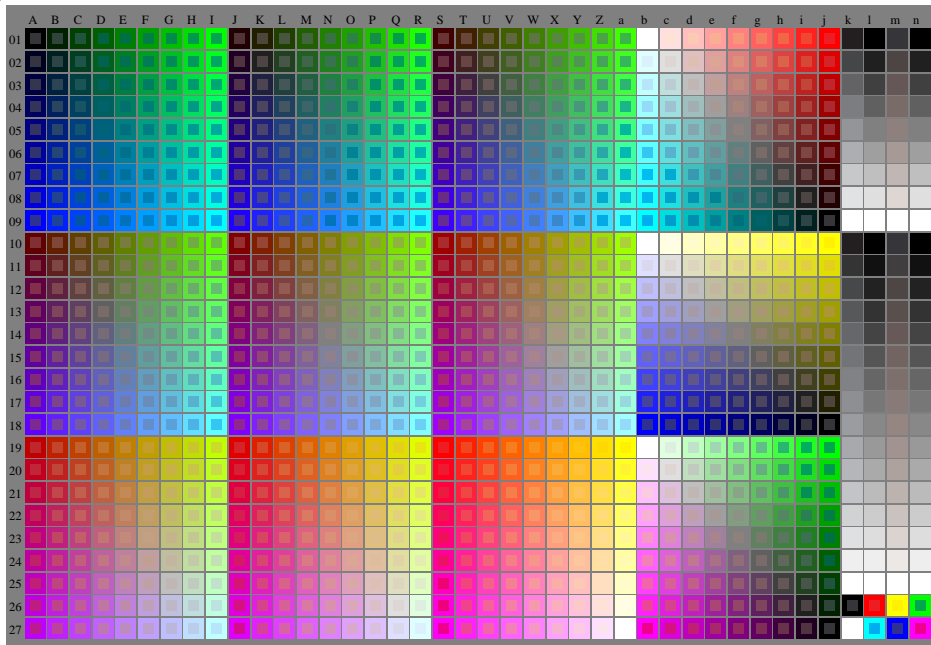


<http://farbe.li.tu-berlin.de/fev8/fev8l0n1.txt/.ps>; start output, Page 1/1
n: No Output Linearization (OL) data in File (f), Startup (s) or Device (d)

see similar files of the whole serie: <http://farbe.li.tu-berlin.de/fevs.htm>
technical information: <http://farbe.li.tu-berlin.de/> or <http://color.li.tu-berlin.de>



TUB registration: 20240201-fev8/fev8l0n1.txt/.ps
application for evaluation and measurement of display or print output

TUB material: code=thadta

fev80-7n, 1/11, Test chart G with 40x27=1080 colours; digital equidistant 9 or 16 step colour scales; Colour data in column (A-n): $rgb + cmy0(A_j + k26_n27), 000n(k), w(l), nnn0(m), www(n), color0 = 0, separation = A$
TUB-test chart fev8; Colorimetric system G
40x27=1080 colours for output or measurement:
input: $(rgb/000n/w/nnn0/www)_d \rightarrow rgb*_d$
output: no change compared to input