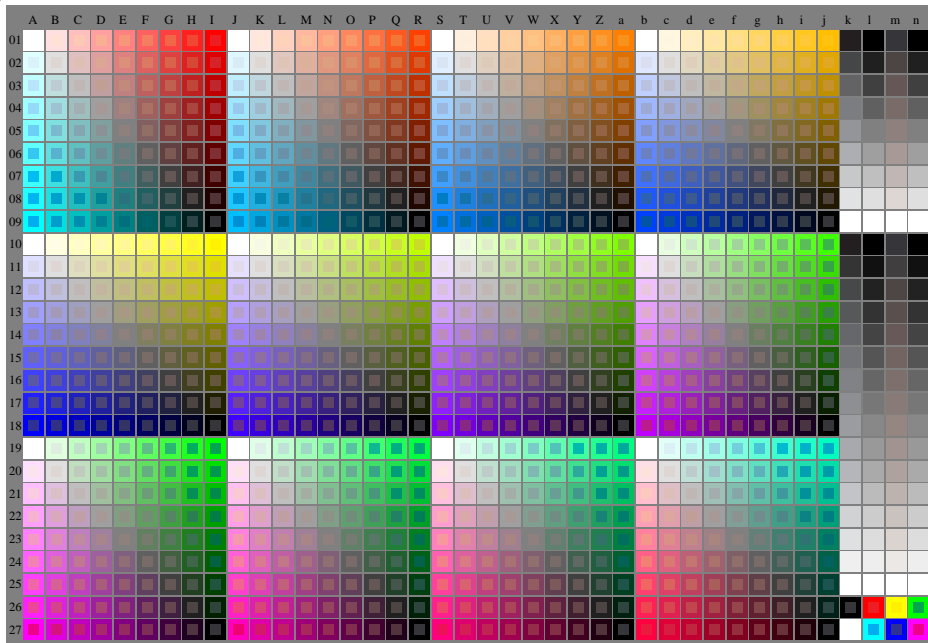


see similar files of the whole serie: <http://farbe.li.tu-berlin.de/fevs.htm>
technical information: <http://farbe.li.tu-berlin.de> or <http://color.li.tu-berlin.de>



fev70-7n, 1/5, Test chart O with 40x27=1080 colours; digital equidistant 9 or 16 step colour scales; Colour data in column (A-n): $rgb + cm\dot{y}\dot{0} (A, j + k26, n27), 000n (k), w (l), nnn\dot{0} (m), www (n), colorm = 0, separation = A$

TUB-test chart fev7; Colorimetric system O

40x27=1080 colours for output or measurement:

input: $(rgb/000n/w/nnn\dot{0}/www)_d \rightarrow rgb^*_d$

output: no change compared to input

TUB registration: 20240201-fev7/fev710n1.txt / .ps
application for evaluation and measurement of display or print output

TUB material code=thadta