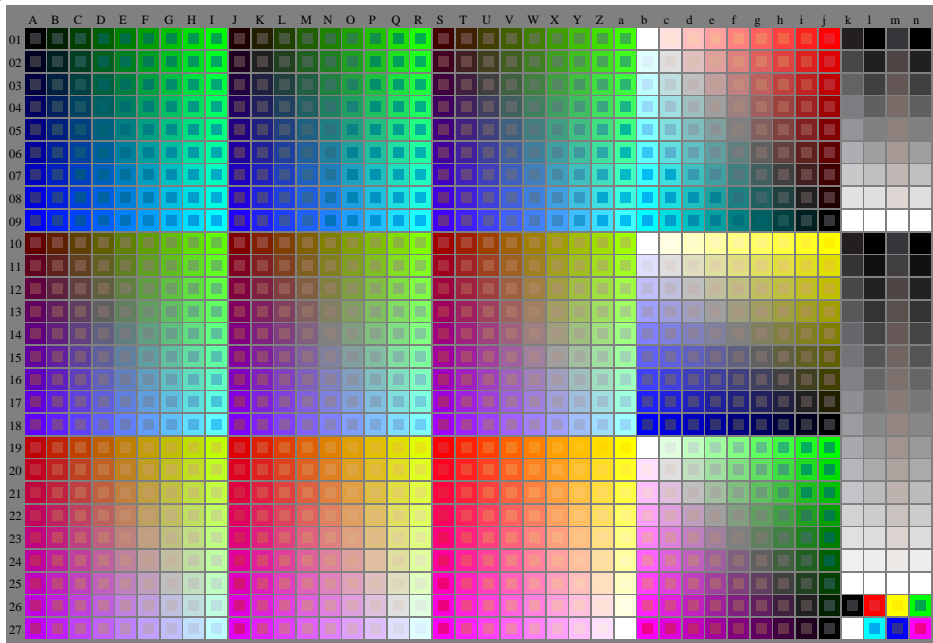


<http://farbe.li.tu-berlin.de/fev6/fev6l0n1.txt> / .ps; start output, Page 1/1

n: No Output Linearization (OL) data in File (f), Startup (s) or Device (d)

see similar files of the whole serie: <http://farbe.li.tu-berlin.de/fevs.htm>  
technical information: <http://farbe.li.tu-berlin.de> or <http://color.li.tu-berlin.de>



fev60-7n, 1/5, Test chart G with 40x27=1080 colours; digital equidistant 9 or 16 step colour scales; Colour data in column (A-n):  $rgb + cmy0(A, j + k26, n27), 000n(k), w(l), nnn0(m), www(n), colorm = 0, separation = A$

TUB-test chart fev6; Colorimetric system G

40x27=1080 colours for output or measurement:

input:  $(rgb/000n/w/nnn0/www)_d \rightarrow rgb^*_d$

output: no change compared to input