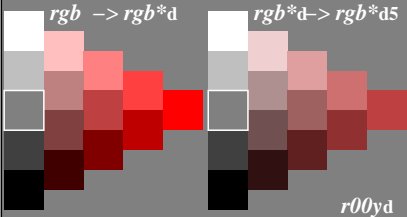


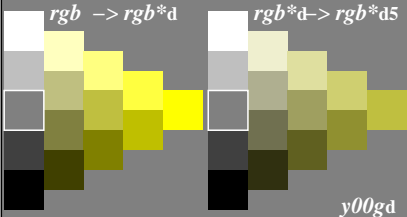
Colorimetric transformation $i = 5$

$$c_i^* = c_5^* = a c^{*b} \text{ with } a = 0,50; b = 1,00$$



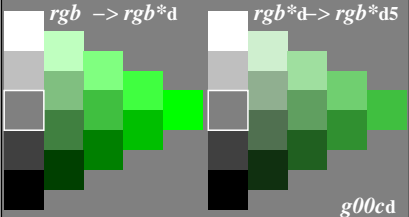
Colorimetric transformation $i = 5$

$$c_i^* = c_5^* = a c^{*b} \text{ with } a = 0,50; b = 1,00$$



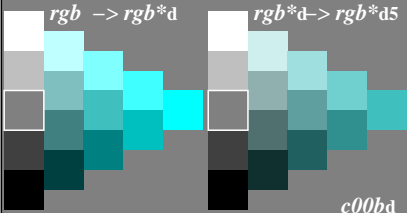
Colorimetric transformation $i = 5$

$$c_i^* = c_5^* = a c^{*b} \text{ with } a = 0,50; b = 1,00$$



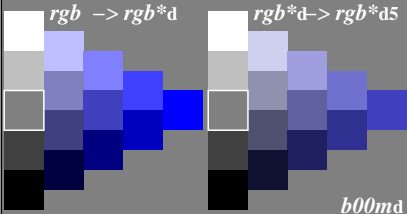
Colorimetric transformation $i = 5$

$$c_i^* = c_5^* = a c^{*b} \text{ with } a = 0,50; b = 1,00$$



Colorimetric transformation $i = 5$

$$c_i^* = c_5^* = a c^{*b} \text{ with } a = 0,50; b = 1,00$$



Colorimetric transformation $i = 5$

$$c_i^* = c_5^* = a c^{*b} \text{ with } a = 0,50; b = 1,00$$

