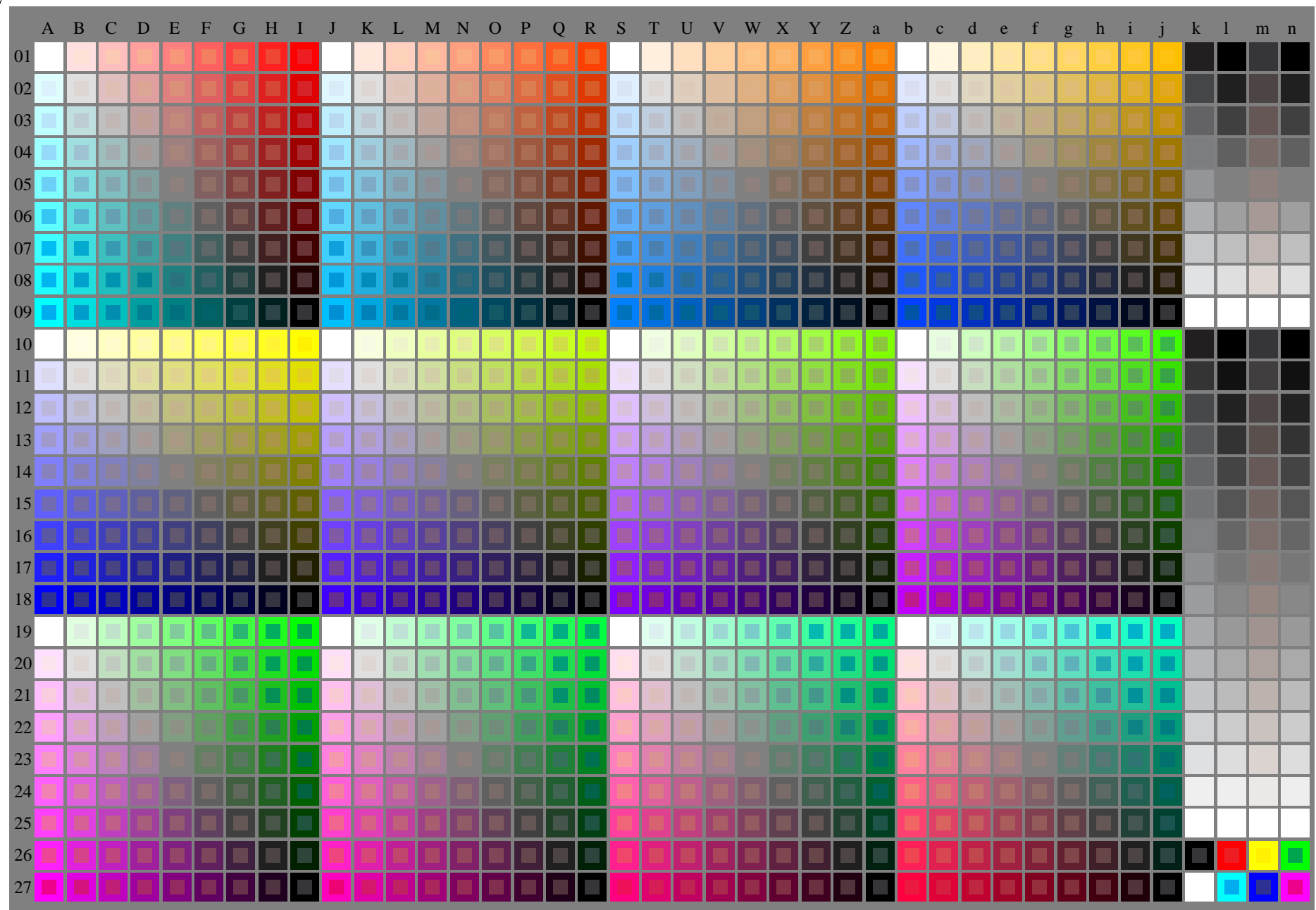


see similar files of the whole serie: <http://farbe.li.tu-berlin.de/feus.htm>
technical information: <http://farbe.li.tu-berlin.de> or <http://color.li.tu-berlin.de>

TUB registration: 20240201-feu9/feu910na.txt /.ps
application for evaluation and measurement of display or print output
TUB material: code=rh4ta



feu90-7n, 1/11, Test chart O with 40x27=1080 colours; digital equidistant 9 or 16 step colour scales; Colour data in column (A-n): **rgb + cmy0 (A_j + k26_n27), 000n (k), w (l), nnn0 (m), www (n), colorm = 0, separation = A**
TUB-test chart feu9; Colorimetric system O
40x27=1080 colours for output or measurement:
input: $(rgb/000n/w/nnn0/www)_d \rightarrow olv*_d$
output: no change compared to input