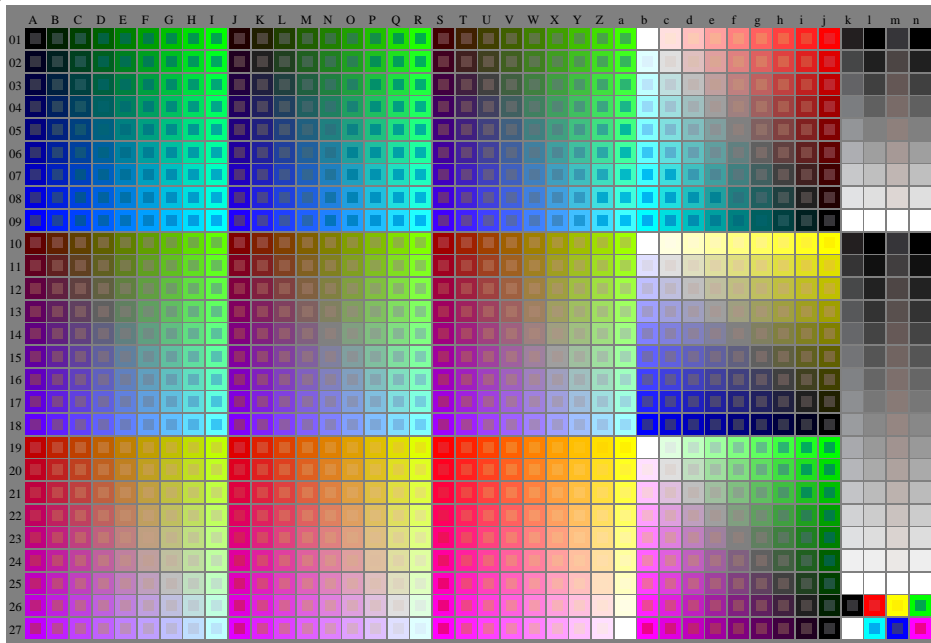


<http://farbe.li.tu-berlin.de/feu6/feu6l0n1.txt> / .ps; start output, Page 1/1
n: No Output Linearization (OL) data in File (f), Startup (s) or Device (d)

see similar files of the whole serie: <http://farbe.li.tu-berlin.de/feus.htm>
technical information: <http://farbe.li.tu-berlin.de> or <http://color.li.tu-berlin.de>



TUB registration: 20240201-feu6/feu6l0n1.txt / .ps
application for evaluation and measurement of display or print output

TUB material: code=thadta

feu60-7n, 1/5, Test chart G with 40x27=1080 colours; digital equidistant 9 or 16 step colour scales; Colour data in column (A-n): $\text{rgb} + \text{cmy0} (A, j + k26, n27), 000n (k), w (l), nnn0 (m), www (n), \text{colorm} = 0, \text{separation} = A$
TUB-test chart feu6; Colorimetric system G
40x27=1080 colours for output or measurement:
input: $(\text{rgb}/000n/w/nnn0/www)_d \rightarrow \text{olv}*_d$
output: no change compared to input