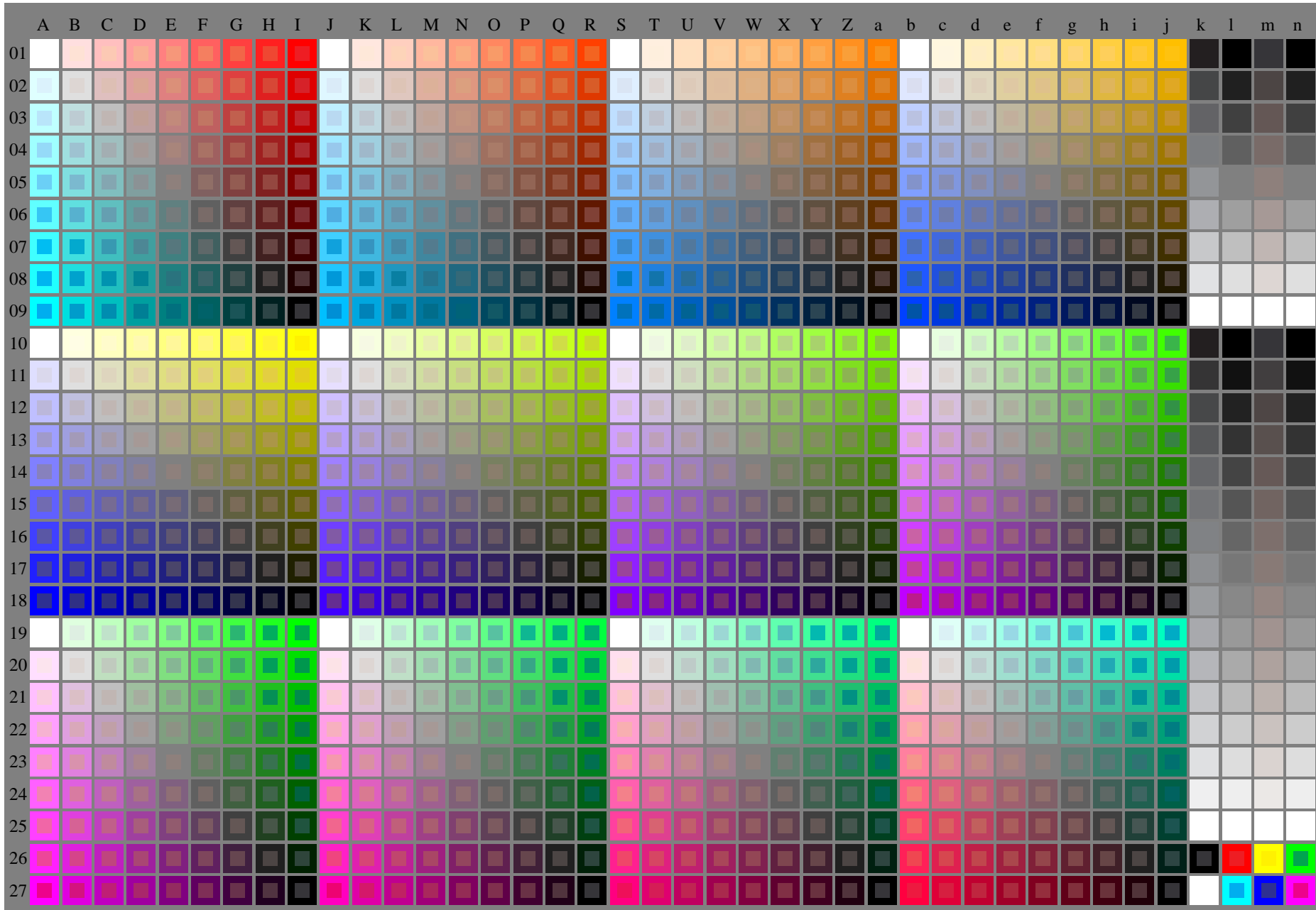


see similar files of the whole serie: <http://farbe.li.tu-berlin.de/feus.htm>  
technical information: <http://farbe.li.tu-berlin.de> or <http://color.li.tu-berlin.de>

TUB registration: 20240201-feu5/feu510na.txt /.ps  
application for evaluation and measurement of display or print output

TUB material: code=rh4ta



feu50-7n, 1/3, Test chart O with 40x27=1080 colours; digital equidistant 9 or 16 step colour scales; Colour data in column (A-n): **rgb + cmy0 (A\_j + k26\_n27), 000n (k), w (l), nnn0 (m), www (n), colorm = 0, separation = A**

TUB-test chart feu5; Colorimetric system O

40x27=1080 colours for output or measurement:

input:  $(rgb/000n/w/nnn0/www)_d \rightarrow olv*_d$

output: no change compared to input