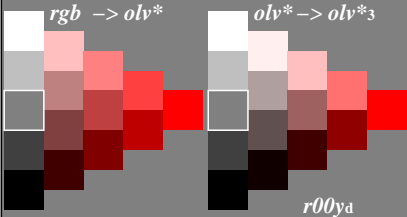


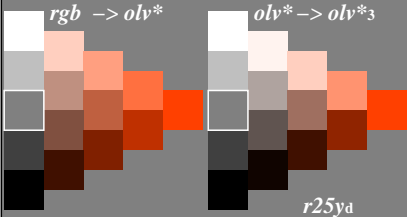
Colorimetric transformation $i = 3$

$$c_i^* = c_3^* = a c^{*b} \text{ with } a = 1,00; b = 2,00$$



Colorimetric transformation $i = 3$

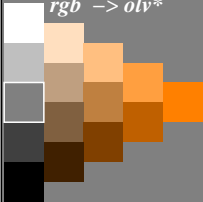
$$c_i^* = c_3^* = a c^{*b} \text{ with } a = 1,00; b = 2,00$$



Colorimetric transformation $i = 3$

$$c_i^* = c_3^* = a c^{*b} \text{ with } a = 1,00; b = 2,00$$

rgb \rightarrow *olv**



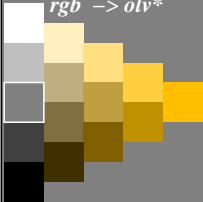
*olv** \rightarrow *olv*_3*



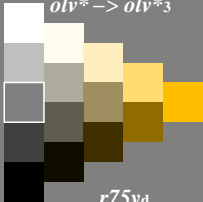
Colorimetric transformation $i = 3$

$$c_i^* = c_3^* = a c^{*b} \text{ with } a = 1,00; b = 2,00$$

rgb \rightarrow *olv**



*olv** \rightarrow *olv*_3*

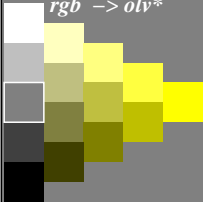


r75ya

Colorimetric transformation $i = 3$

$$c_i^* = c_3^* = a c^{*b} \text{ with } a = 1,00; b = 2,00$$

rgb \rightarrow *olv**

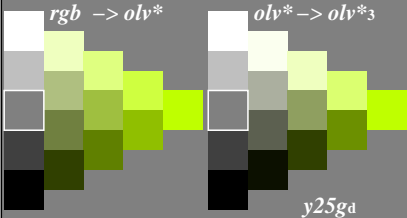


*olv** \rightarrow *olv*_3*



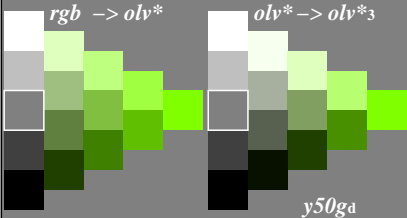
Colorimetric transformation $i = 3$

$$c_i^* = c_3^* = a c^{*b} \text{ with } a = 1,00; b = 2,00$$



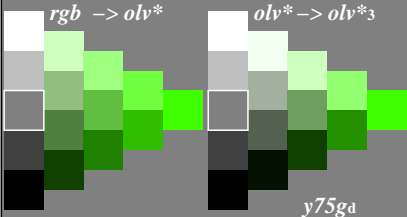
Colorimetric transformation $i = 3$

$$c_i^* = c_3^* = a c^{*b} \text{ with } a = 1,00; b = 2,00$$



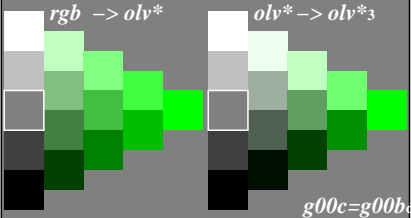
Colorimetric transformation $i = 3$

$$c_i^* = c_3^* = a c^{*b} \text{ with } a = 1,00; b = 2,00$$



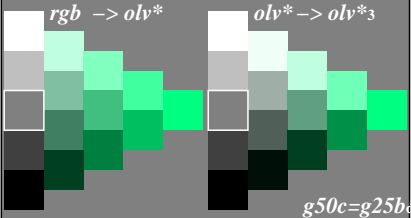
Colorimetric transformation $i = 3$

$$c_i^* = c_3^* = a c^{*b} \text{ with } a = 1,00; b = 2,00$$



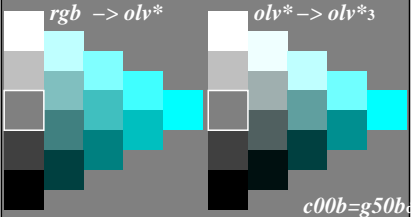
Colorimetric transformation $i = 3$

$$c_i^* = c_3^* = a c^{*b} \text{ with } a = 1,00; b = 2,00$$



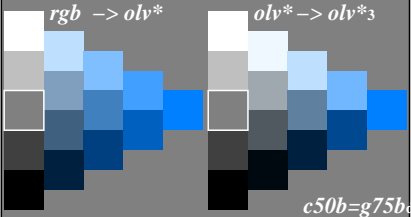
Colorimetric transformation $i = 3$

$$c_i^* = c_3^* = a c^{*b} \text{ with } a = 1,00; b = 2,00$$



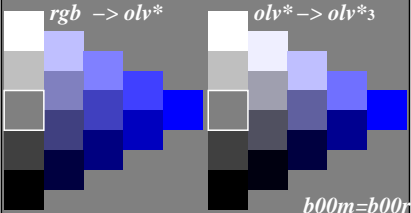
Colorimetric transformation $i = 3$

$$c_i^* = c_3^* = a c^{*b} \text{ with } a = 1,00; b = 2,00$$



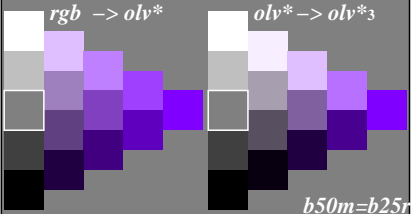
Colorimetric transformation $i = 3$

$$c_i^* = c_3^* = a c^{*b} \text{ with } a = 1,00; b = 2,00$$



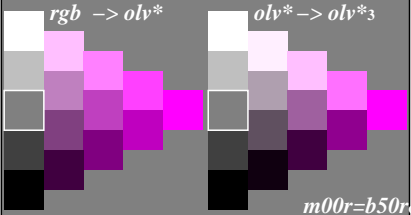
Colorimetric transformation $i = 3$

$$c_i^* = c_3^* = a c^{*b} \text{ with } a = 1,00; b = 2,00$$



Colorimetric transformation $i = 3$

$$c_i^* = c_3^* = a c^{*b} \text{ with } a = 1,00; b = 2,00$$



Colorimetric transformation $i = 3$

$$c_i^* = c_3^* = a c^{*b} \text{ with } a = 1,00; b = 2,00$$

