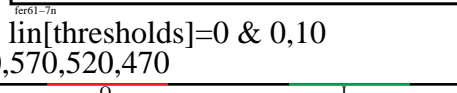
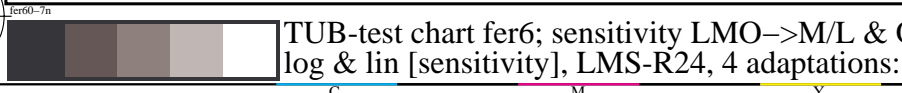
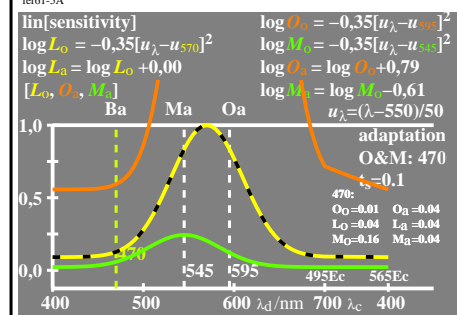
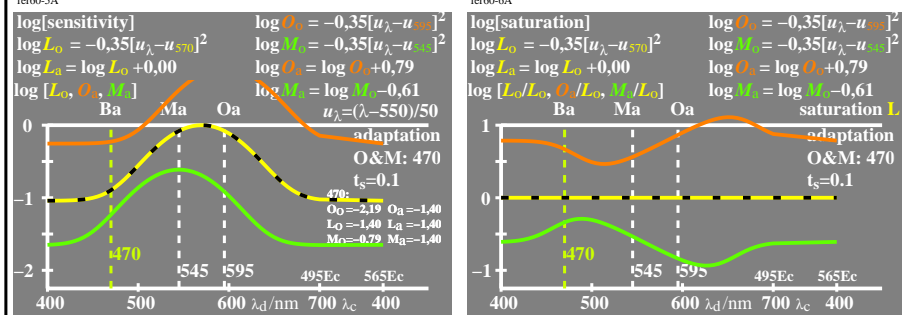
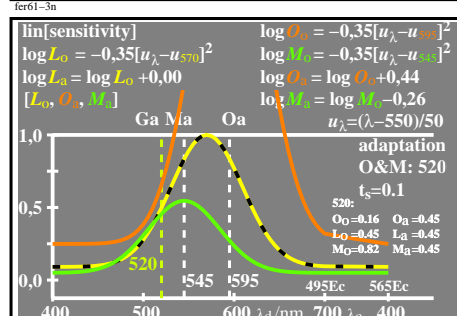
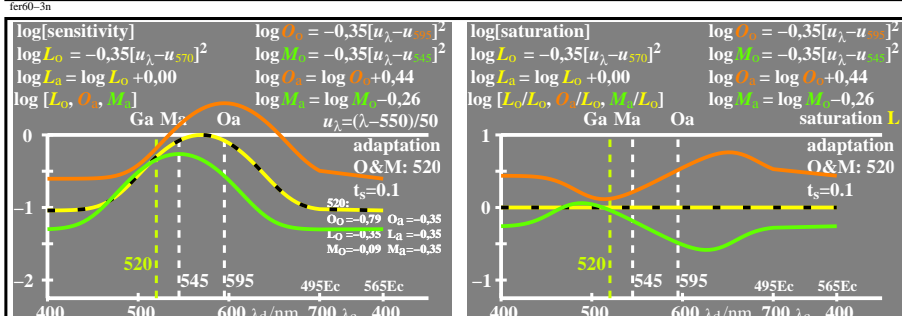
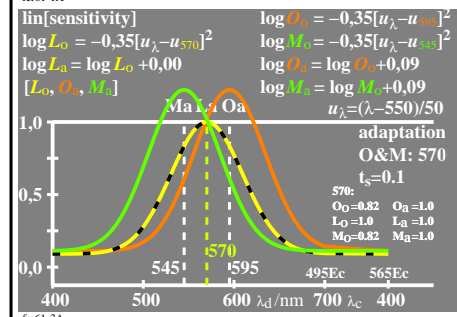
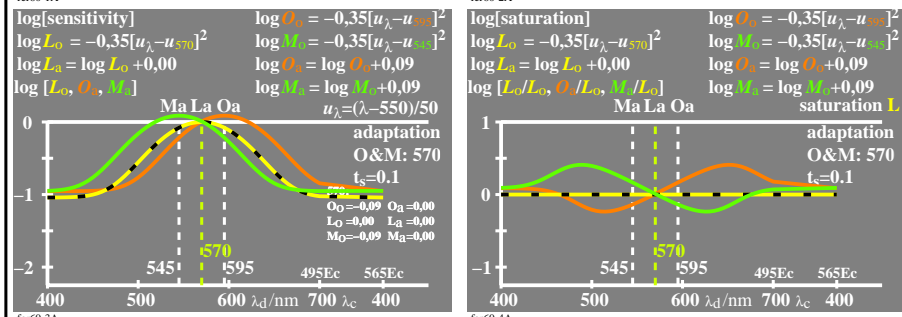
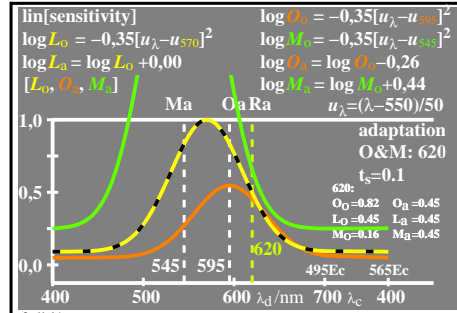
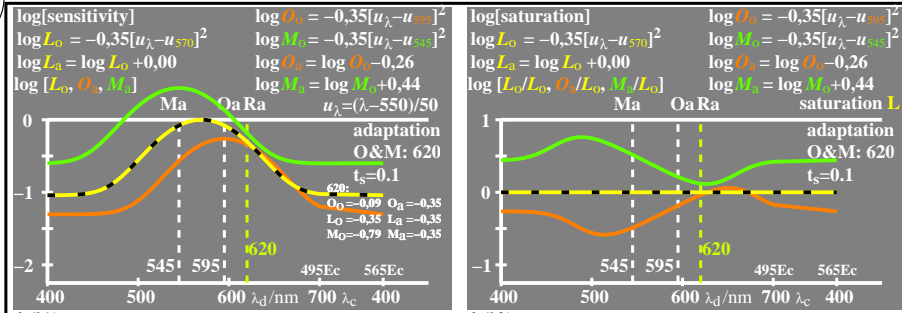


see similar files of the whole serie: <http://farbe.li.tu-berlin.de/fer6/fer610na.txt> / .ps
 technical information: <http://farbe.li.tu-berlin.de> or <http://color.li.tu-berlin.de>

TUB registration: 20231201-fer6/fer610na.txt / .ps
 application for evaluation and measurement of display or print output

TUB material: code=rhata



TUB-test chart fer6; sensitivity LMO->M/L & O/L, lin[thresholds]=0 & 0,10
 log & lin [sensitivity], LMS-R24, 4 adaptations: 620,570,520,470

