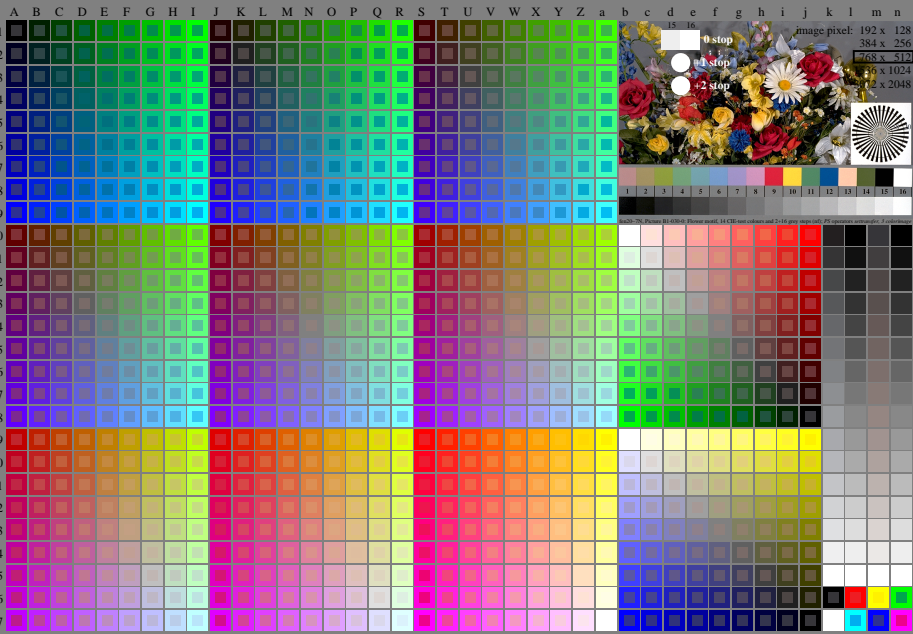


<http://farbe.li-to-berlin.de/fen2/fen20n1.txt/ps>; only vector graphic VG; start output
see separate images of this page: <http://farbe.li-to-berlin.de/fen2/fen2.htm>

see similar files of the whole series: <http://farbe.li-to-berlin.de/fen.htm>
technical information: <http://farbe.li-to-berlin.de/A/338/72E.html>
or <http://standard.chromaprint.org/2.1/306/ed/2/index.html>



TUB registration: 20240301-fen2/fen20n1.txt/ps
application for evaluation and measurement of display or print output

TUB material: code=ha4ta

fen20-7N, Page 1/16, Test chart 2G with 40x27=1080 colours; digital equidistant 9 or 16 step colour scales; Colour data in column (A-n): rgb + cmy0 (A_j + k26_n27), 000n (k), w (l), nm0 (m), www (n), colorm = 0, xchart = 0, pchart = 0

TUB-test chart fen2: fen2: Test chart uh_d08 with 40x27=1080 colours; DH
Digital equidistant 9 or 16 step colour scales, L-HDR; $\gamma_R=1,56$

000n/w/cmy0/rgb
->rgb*_d.030-0:

