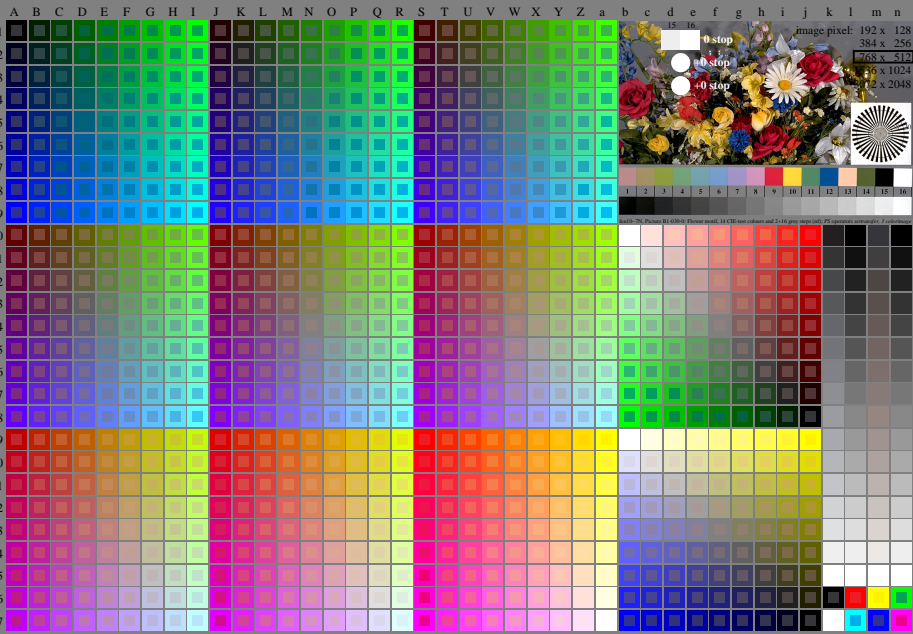


<http://farbe.li-to-berlin.de/fen1/fen1.html.txt/.ps>; only vector graphic VG; start output  
see separate images of this page: <http://farbe.li-to-berlin.de/fen1/fen1.htm>

see similar files of the whole series: <http://farbe.li-to-berlin.de/fen.html>  
technical information: <http://farbe.li-to-berlin.de/A/538/72E.html>  
or <http://standard.chromaprint.org/9241/306/ed/2/index.html>



fen10-7N, Page 1/16, Test chart 2G with 40x27=1080 colours; digital equidistant 9 or 16 step colour scales; Colour data in column (A-n): rgb + cmy0 (A\_J + k26\_n27), 000n (k), w (l), nm0 (m), www (n), colorm = 0, xchart = 0, pchart = 0

TUB-test chart fen1: fen1: Test chart uh\_d08 with 40x27=1080 colours; DH  
Digital equidistant 9 or 16 step colour scales, L-HDR;  $\gamma_R=1.25$

000n/w/cmy0/rgb  
->rgb\*\_d.030-0:

TUB registration: 20240301-fen1/fen1.html.txt/.ps  
application for evaluation and measurement of display or print output

TUB material: code=ha4ta



