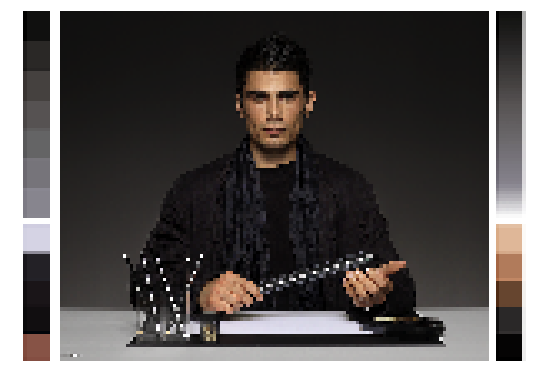
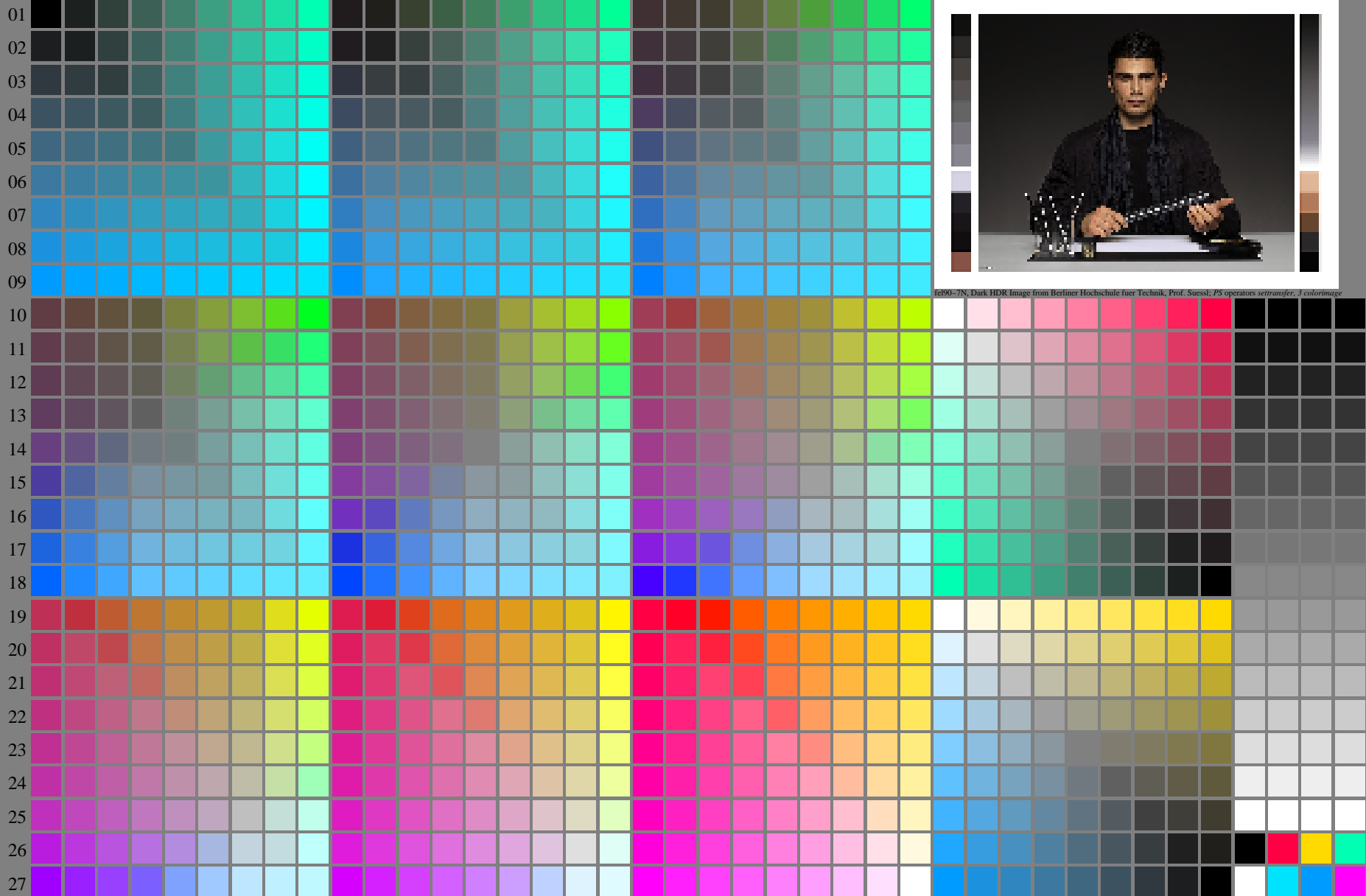


<http://farbe.li.tu-berlin.de/fel9/fel910fa.txt> / .ps; only vector graphic VG; start output
see separate images of this page: <http://farbe.li.tu-berlin.de/fel9/fel9.hum>

A B C D E F G H I J K L M N O P Q R S T U V W X Y Z a b c d e f g h i j k l m n



see similar files of the whole serie: <http://farbe.li.tu-berlin.de/fels.htm>
technical information: <http://farbe.li.tu-berlin.de/A/33872E.html>
or <http://standards.iso.org/iso/9241/306/ed-2/index.html>

TUB registration: 20240301-fel9/fel910fa.txt / .ps
application for evaluation and measurement of display or print output
TUB material: code=rha4ta

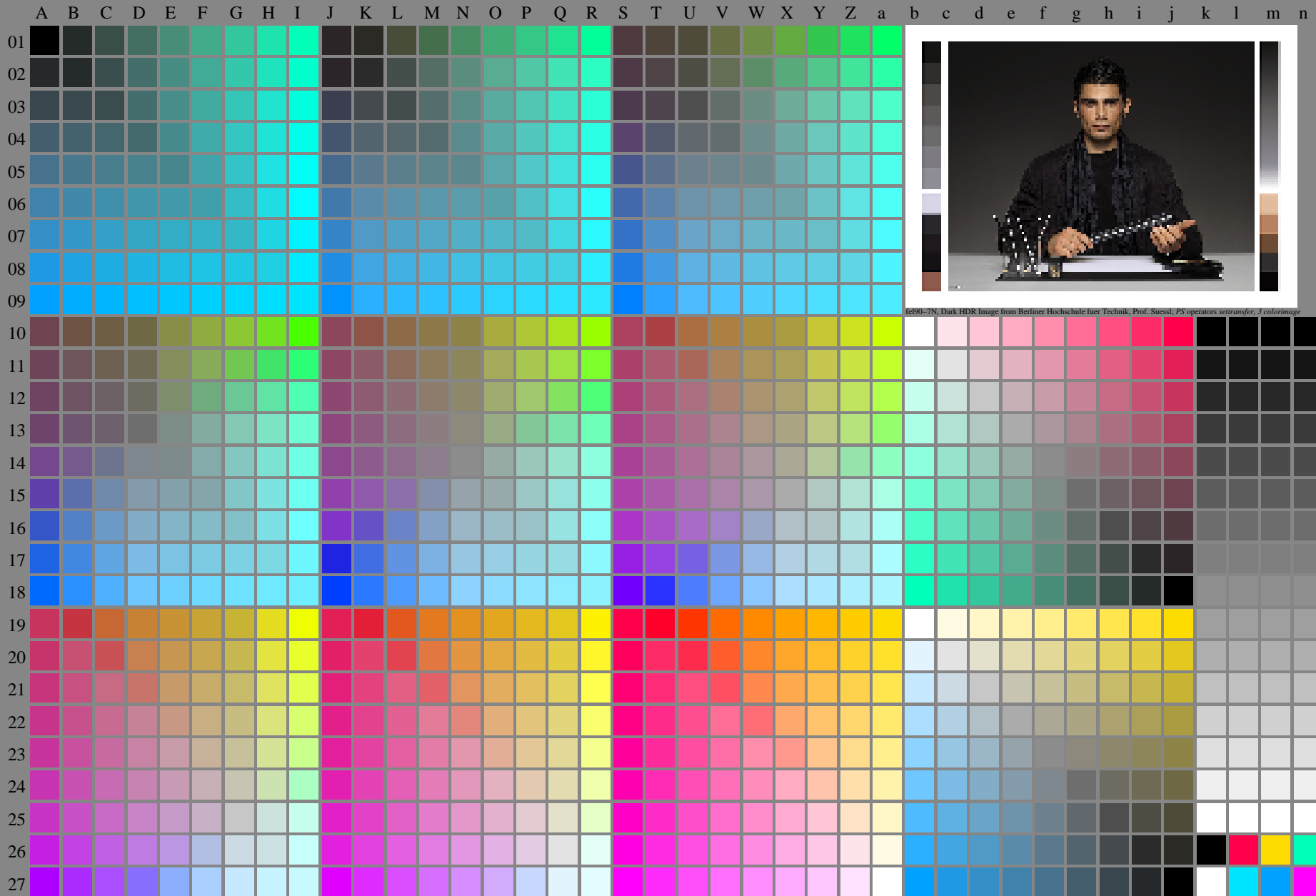
fel90-7N, Page 1/16, Test chart 2G with 40x27=1080 colours; digital equidistant 9 or 16 step colour scales; Colour data in column (A-n): rgb*(A_n), colormap = 1, xchart = 0, pchart = 0

TUB-test chart fel9; fel9: Test chart ul_e10 with 40x27=1080 colours; 1MR, DEH 000n/w/cmy0/rgb
Digital equidistant 9 or 16 step colour scales, D-HDR; $\gamma_R=1,0$
->rgb*_de, 130-0:

<http://farbe.li.tu-berlin.de/fel9/fel910fa.txt/.ps>; only vector graphic VG;
see separate images of this page: <http://farbe.li.tu-berlin.de/fel9/fel9.hum>

see similar files of the whole series: <http://farbe.li.tu-berlin.de/fels.htm>
technical information: <http://farbe.li.tu-berlin.de/A/53872E.html>
or <http://standards.iso.org/iso/9241/506/ed-2/index.html>

TUB registration: 20240301-fel9/fel910fa.txt/.ps
application for evaluation and measurement of display or print output
TUB material: code=rh4ta



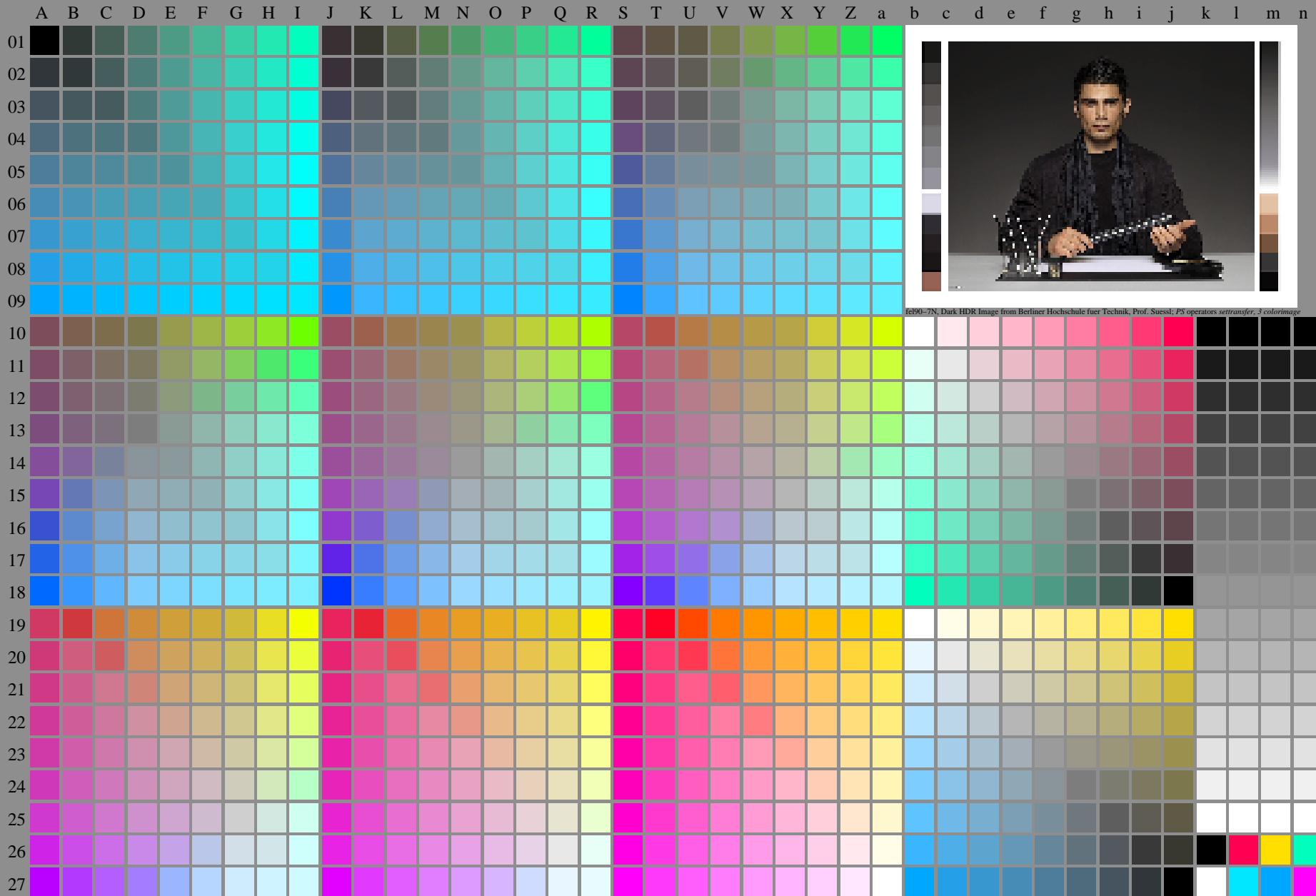
fel90-7N, Page 1/16, Test chart 2G with 40x27=1080 colours; digital equidistant 9 or 16 step colour scales; Colour data in column (A-n): $rgb^*_{de}(A_n)$, $colorm = 1$, $xchart = 1$, $pchart = 0$

TUB-test chart fel9; fel9: Test chart ul_e10 with 40x27=1080 colours; 1MR, DEH 000n/w/cmy0/rgb
Digital equidistant 9 or 16 step colour scales, D-HDR; $\gamma_R=1,0$
 $\rightarrow rgb^*_{de}, 131-0:$

<http://farbe.li.tu-berlin.de/fel9/fel910fa.txt/.ps>; only vector graphic VG;
see separate images of this page: <http://farbe.li.tu-berlin.de/fel9/fel9.htm>

see similar files of the whole series: <http://farbe.li.tu-berlin.de/fel9.htm>
technical information: <http://farbe.li.tu-berlin.de/A/53872E.html>
or <http://standards.iso.org/iso/9241/506/ed-2/index.html>

TUB registration: 20240301-fel9/fel910fa.txt/.ps
application for evaluation and measurement of display or print output
TUB material: code=rh4ta

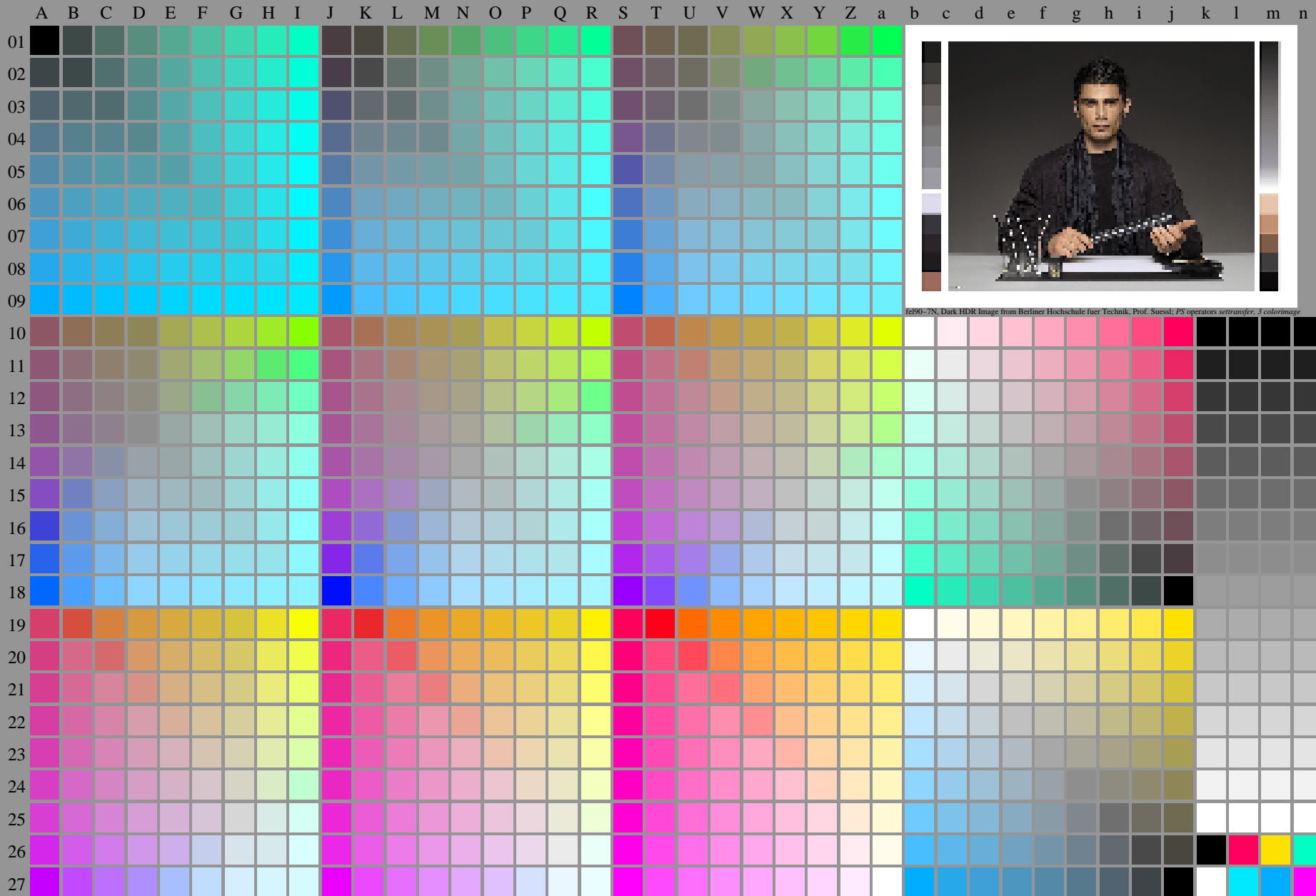
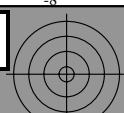
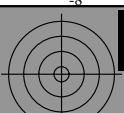


fel90-7N, Dark HDR Image from Berliner Hochschule fuer Technik, Prof. Suessli; PS operators settransfer_3.colormage

fel90-7N, Page 1/16, Test chart 2G with 40x27=1080 colours; digital equidistant 9 or 16 step colour scales; Colour data in column (A-n): $rgb^*_e(A_n)$, $colorm = 1$, $xchart = 2$, $pchart = 0$

TUB-test chart fel9; fel9: Test chart ul_e10 with 40x27=1080 colours; 1MR, DEH 000n/w/cmy0/rgb
Digital equidistant 9 or 16 step colour scales, D-HDR; $\gamma_R=1,0$
 $\rightarrow rgb^*_{de}, 132-0:$

<http://farbe.li.tu-berlin.de/fel9/fel910na.txt/.ps>; only vector graphic VG;
see separate images of this page: <http://farbe.li.tu-berlin.de/fel9/fel9.htm>



fel90-7N, Dark HDR Image from Berliner Hochschule fuer Technik, Prof. Suessli; PS operators settransfer, 3 colorImage

see similar files of the whole series: <http://farbe.li.tu-berlin.de/fel9.htm>
technical information: <http://farbe.li.tu-berlin.de/A/53872E.html>
or <http://standards.iso.org/iso/9241/5M6/ed-2/index.html>

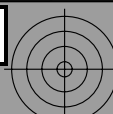
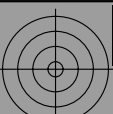
TUB registration: 20240301-fel9/fel910fa.txt/.ps
application for evaluation and measurement of display or print output
TUB material: code=rh4ta

fel90-7N, Page 1/16, Test chart 2G with 40x27=1080 colours; digital equidistant 9 or 16 step colour scales; Colour data in column (A-n): $rgb^*_*(A_n)$, $colorm = 1$, $xchart = 3$, $pchart = 0$

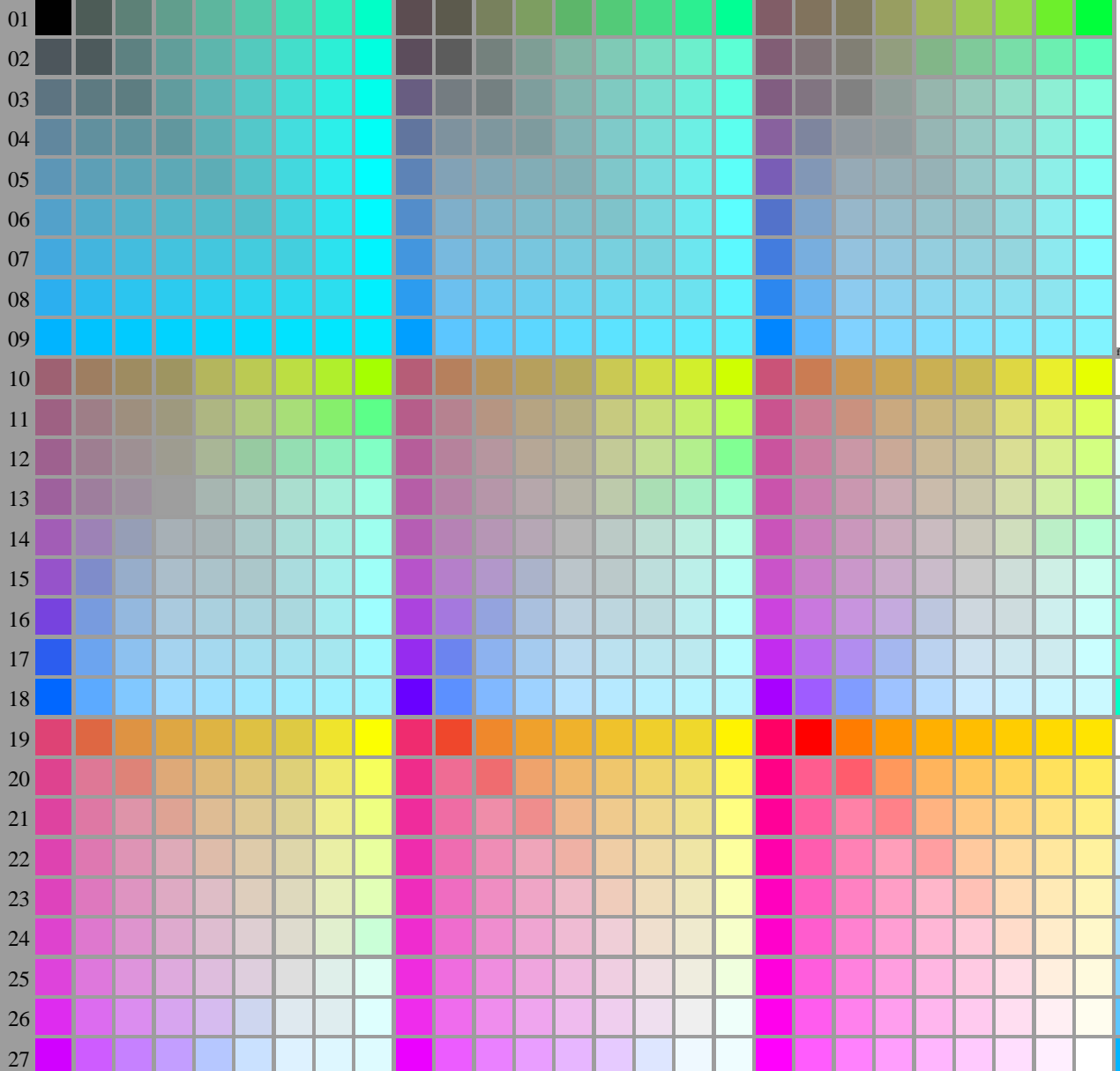
TUB-test chart fel9; fel9: Test chart ul_e10 with 40x27=1080 colours; 1MR, DEH 000n/w/cmy0/rgb
Digital equidistant 9 or 16 step colour scales, D-HDR; $\gamma_R=1,0$
 $\rightarrow rgb^*_de, 133-0:$



<http://farbe.li.tu-berlin.de/fel9/fel910na.txt/.ps>; only vector graphic VG;
see separate images of this page: <http://farbe.li.tu-berlin.de/fel9/fel9.htm>



A B C D E F G H I J K L M N O P Q R S T U V W X Y Z a b c d e f g h i j k l m n



fel90-7N, Dark HDR Image from Berliner Hochschule fuer Technik, Prof. Suessli; PS operators settransfer, 3 colorimage

see similar files of the whole series: <http://farbe.li.tu-berlin.de/fel9.htm>
technical information: <http://farbe.li.tu-berlin.de/A/33872E.html>
or <http://standards.iso.org/iso/9241/506/ed-2/index.html>

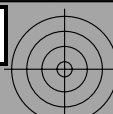
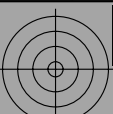
TUB registration: 20240301-fel9/fel910fa.txt/.ps
application for evaluation and measurement of display or print output
TUB material: code=rh4ta

fel90-7N, Page 1/16, Test chart 2G with 40x27=1080 colours; digital equidistant 9 or 16 step colour scales; Colour data in column (A-n): $rgb^*(A_n)$, $colorm = 1$, $xchart = 4$, $pchart = 0$

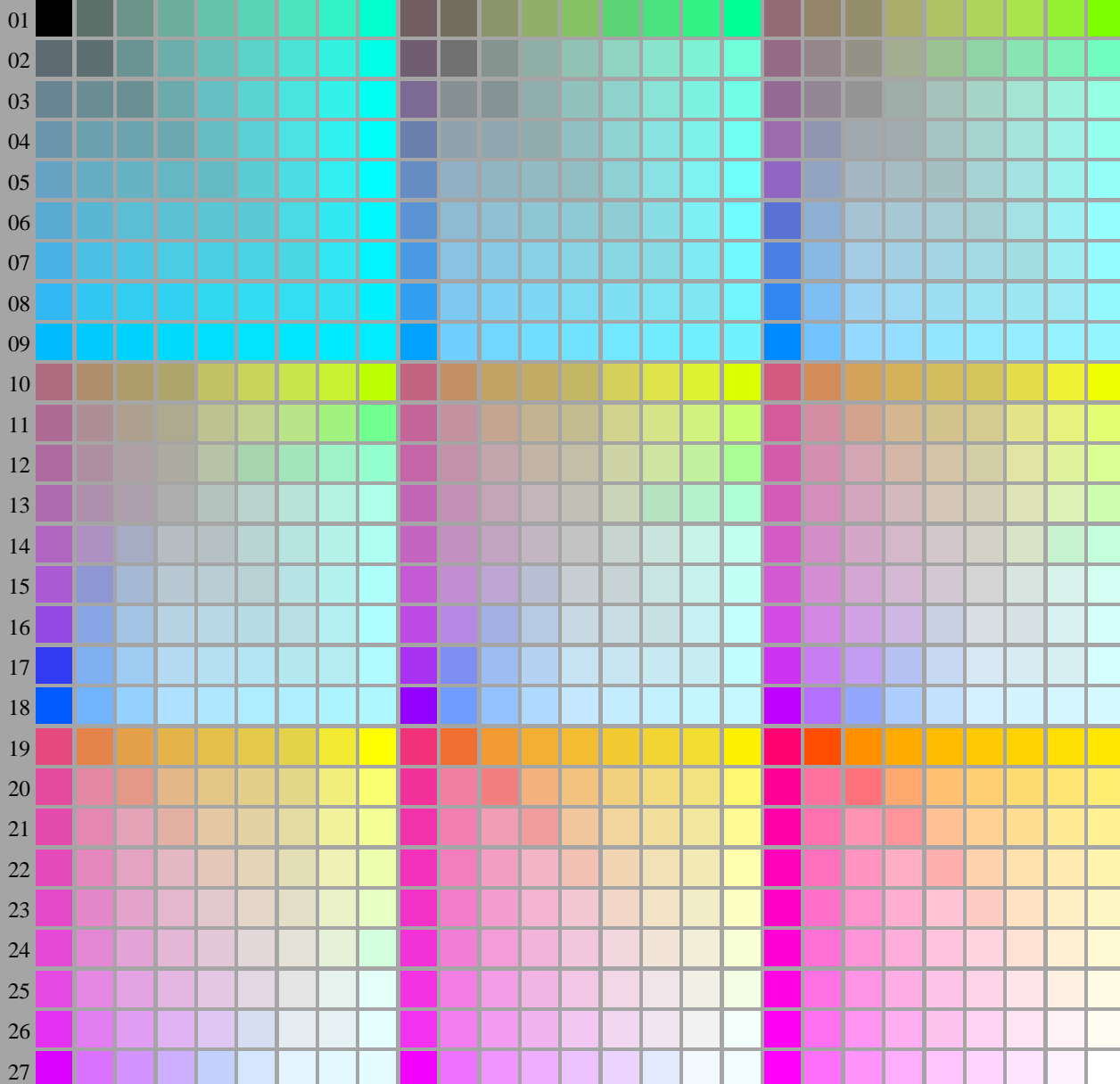
TUB-test chart fel9; fel9: Test chart ul_e10 with 40x27=1080 colours; 1MR, DEH 000n/w/cmy0/rgb
Digital equidistant 9 or 16 step colour scales, D-HDR; $\gamma_R=1,0$
 $\rightarrow rgb^*_{de}, 134-0:$



<http://farbe.li.tu-berlin.de/fel9/fel910na.txt/.ps>; only vector graphic VG;
see separate images of this page: <http://farbe.li.tu-berlin.de/fel9/fel9.htm>



A B C D E F G H I J K L M N O P Q R S T U V W X Y Z a b c d e f g h i j k l m n



fel90-7N, Dark HDR Image from Berliner Hochschule fuer Technik, Prof. Suessli; PS operators settransfer, 3 colorimage

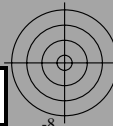
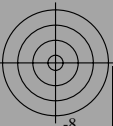
see similar files of the whole series: <http://farbe.li.tu-berlin.de/fel9.htm>
technical information: <http://farbe.li.tu-berlin.de/A/33872E.html>
or <http://standards.iso.org/iso/9241/506/ed-2/index.html>

TUB registration: 20240301-fel9/fel910na.txt/.ps
application for evaluation and measurement of display or print output

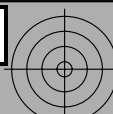
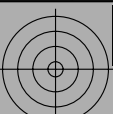
TUB material: code=rh4ta

fel90-7N, Page 1/16, Test chart 2G with 40x27=1080 colours; digital equidistant 9 or 16 step colour scales; Colour data in column (A-n): $rgb^*(A_n)$, $colorm = 1$, $xchart = 5$, $pchart = 0$

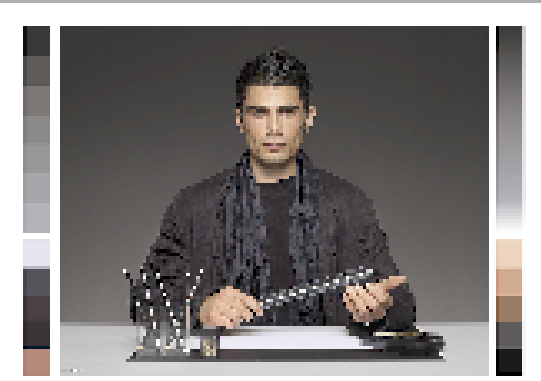
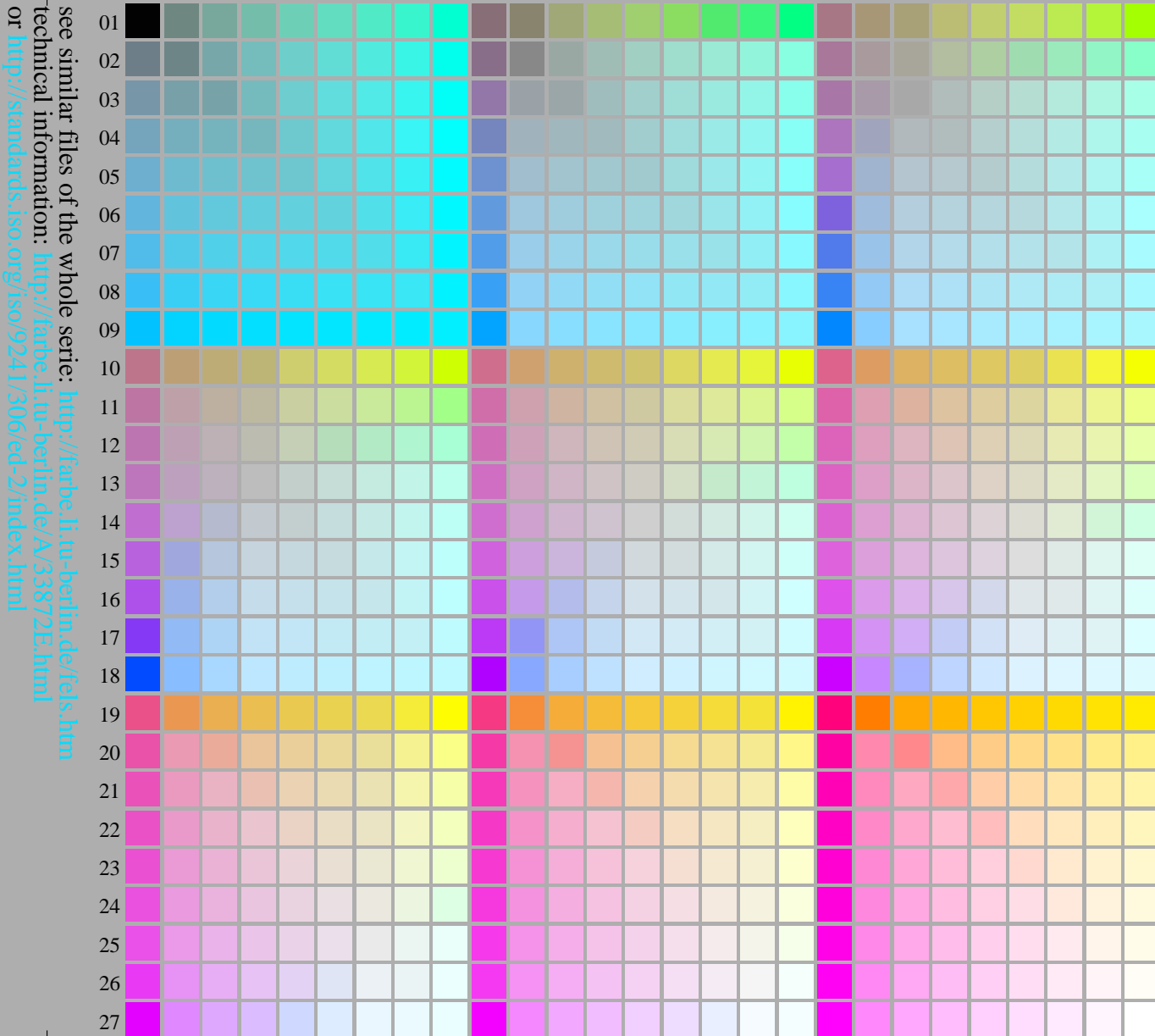
TUB-test chart fel9; fel9: Test chart ul_e10 with 40x27=1080 colours; 1MR, DEH 000n/w/cmy0/rgb
Digital equidistant 9 or 16 step colour scales, D-HDR; $\gamma_R=1,0$
 $\rightarrow rgb^*_{de}, 135-0:$



<http://farbe.li.tu-berlin.de/fel9/fel910fa.txt> / .ps; only vector graphic VG;
see separate images of this page: <http://farbe.li.tu-berlin.de/fel9/fel9.htm>



A B C D E F G H I J K L M N O P Q R S T U V W X Y Z a b c d e f g h i j k l m n



fel90-7N, Dark HDR Image from Berliner Hochschule fuer Technik, Prof. Suessli; PS operators settransfer, 3 colorimage

see similar files of the whole series: <http://farbe.li.tu-berlin.de/fel9.htm>
technical information: <http://farbe.li.tu-berlin.de/A/33872E.html>
or <http://standards.iso.org/iso/9241/306/ed-2/index.html>

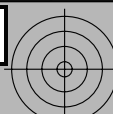
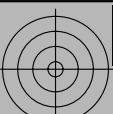
TUB registration: 20240301-fel9/fel910fa.txt / .ps
application for evaluation and measurement of display or print output
TUB material: code=rh4ta

fel90-7N, Page 1/16, Test chart 2G with 40x27=1080 colours; digital equidistant 9 or 16 step colour scales; Colour data in column (A-n): $rgb^*(A_n)$, $colorm = 1$, $xchart = 6$, $pchart = 0$

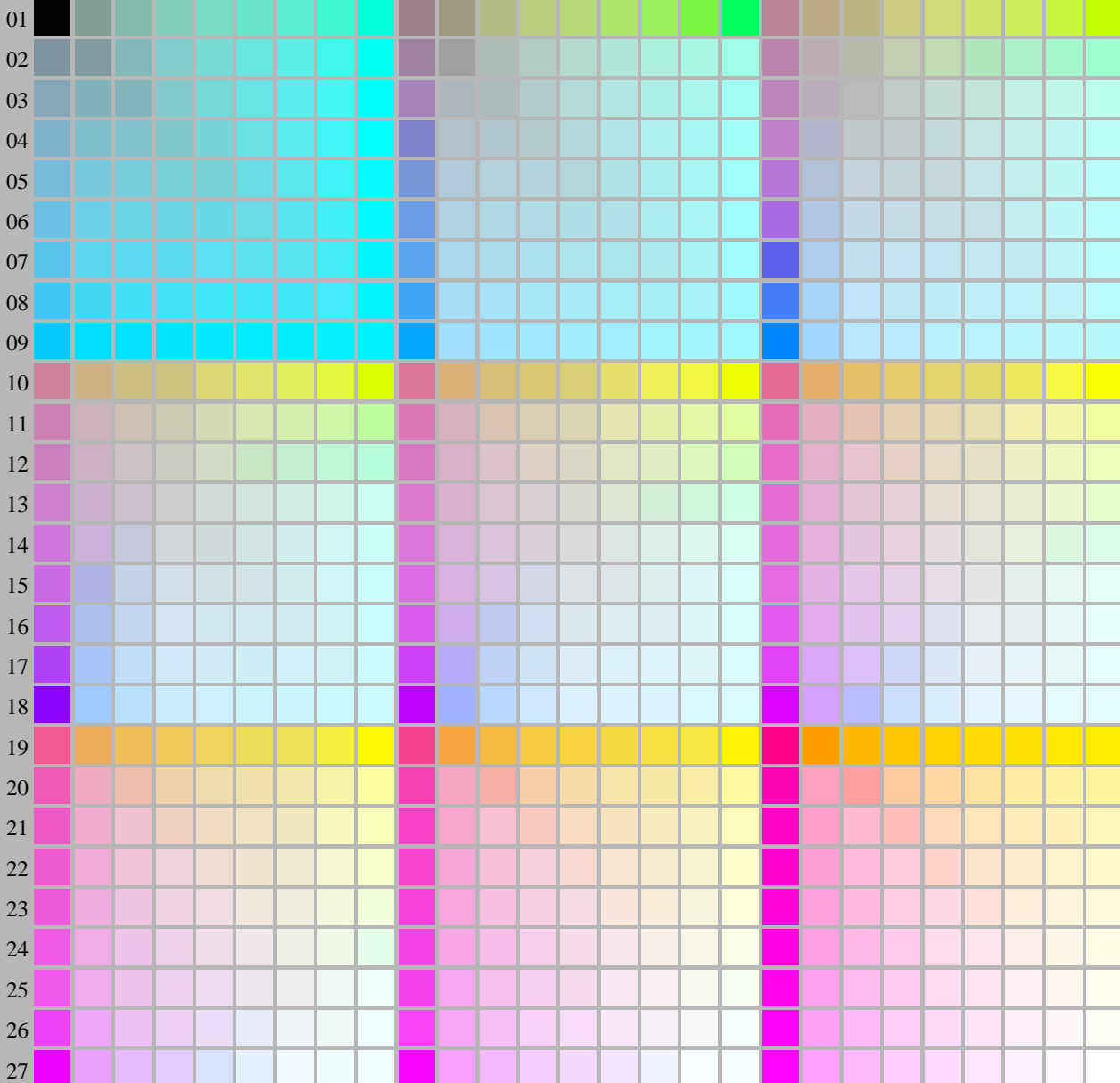
TUB-test chart fel9; fel9: Test chart ul_e10 with 40x27=1080 colours; 1MR, DEH 000n/w/cmy0/rgb
Digital equidistant 9 or 16 step colour scales, D-HDR; $\gamma_R=1,0$
 $\rightarrow rgb^*_{de}, 136-0:$



<http://farbe.li.tu-berlin.de/fel9/fel910fa.txt> /.ps; only vector graphic VG;
see separate images of this page: <http://farbe.li.tu-berlin.de/fel9/fel9.htm>



A B C D E F G H I J K L M N O P Q R S T U V W X Y Z a b c d e f g h i j k l m n



fel90-7N, Dark HDR Image from Berliner Hochschule fuer Technik, Prof. Suessli; PS operators settransfer, 3 colorimage

see similar files of the whole serie: <http://farbe.li.tu-berlin.de/fels.htm>
technical information: <http://farbe.li.tu-berlin.de/A/33872E.html>
or <http://standards.iso.org/iso/9241/306/ed-2/index.html>

TUB registration: 20240301-fel9/fel910fa.txt /.ps
application for evaluation and measurement of display or print output
TUB material: code=rh4ta

fel90-7N, Page 1/16, Test chart 2G with 40x27=1080 colours; digital equidistant 9 or 16 step colour scales; Colour data in column (A-n): $rgb^*(A_n)$, colorm = 1, xchart = 7, pchart = 0

TUB-test chart fel9; fel9: Test chart ul_e10 with 40x27=1080 colours; 1MR, DEH 000n/w/cmy0/rgb
Digital equidistant 9 or 16 step colour scales, D-HDR; $\gamma_R=1,0$
 $\rightarrow rgb^*_{de}, 137-0:$

