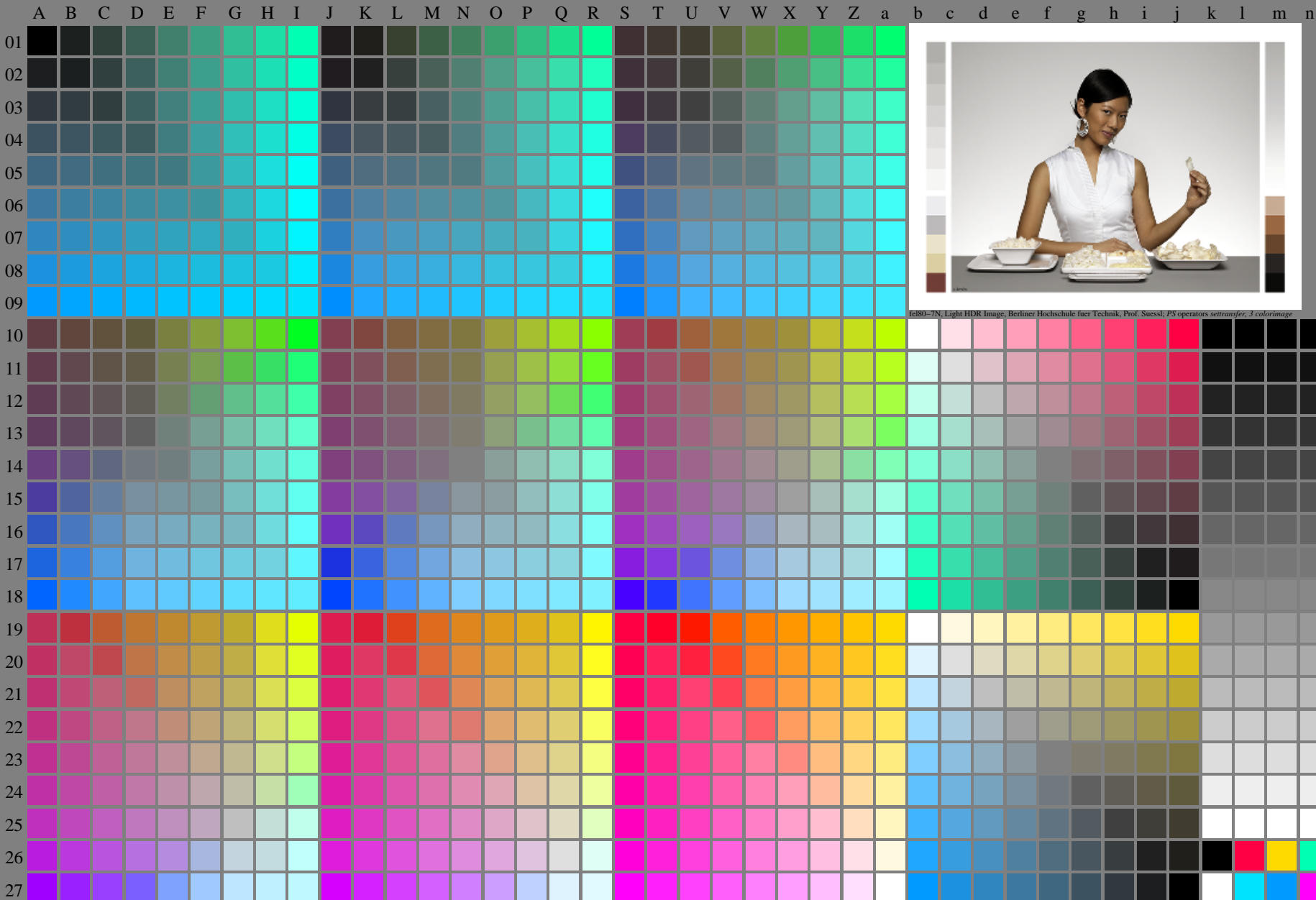


<http://farbe.li.tu-berlin.de/fel8/fel810fa.txt/.ps>; only vector graphic VG; start output  
see separate images of this page: <http://farbe.li.tu-berlin.de/fel8/fel8.htm>

see similar files of the whole series: <http://farbe.li.tu-berlin.de/fel8.htm>  
technical information: <http://farbe.li.tu-berlin.de/A/33872E.html>  
or <http://standards.iso.org/iso/9241/306/ed-2/index.html>

TUB registration: 20240301-fel8/fel810fa.txt/.ps  
application for evaluation and measurement of display or print output  
TUB material: code=rh4ta



fel80-7N, Page 1/16, Test chart 2G with 40x27=1080 colours; digital equidistant 9 or 16 step colour scales; Colour data in column (A-n):  $rgb^*_d(A_n)$ ,  $colorm = 1$ ,  $xchart = 0$ ,  $pchart = 0$

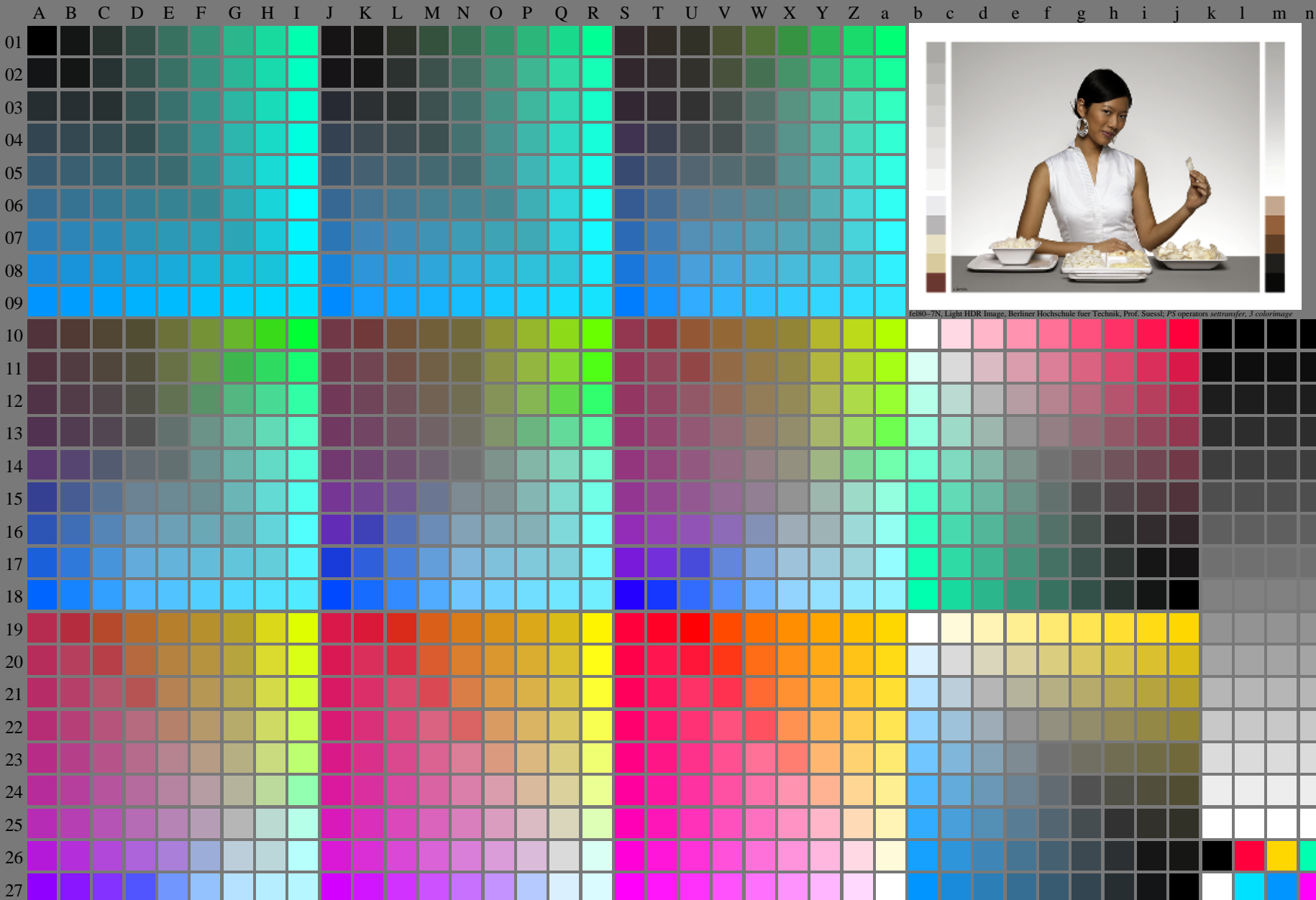
TUB-test chart fel8; fel8: Test chart uh\_e10 with 40x27=1080 colours; 1MR, DEH 000n/w/cmy0/rgb  
Digital equidistant 9 or 16 step colour scales, L-HDR;  $\gamma_R=1,0$   
 $\rightarrow rgb^*_{de}, 130-0:$

<http://farbe.li.tu-berlin.de/fel8/fel810fa.txt> /.ps; only vector graphic VG;  
see separate images of this page: <http://farbe.li.tu-berlin.de/fel8/fel8.htm>

see similar files of the whole series: <http://farbe.li.tu-berlin.de/fel8.htm>  
technical information: <http://farbe.li.tu-berlin.de/A/33872E.html>  
or <http://standards.iso.org/iso/9241/306/ed-2/index.html>

TUB registration: 20240301-fel8/fel810fa.txt /.ps  
application for evaluation and measurement of display or print output

TUB material: code=rh4ta



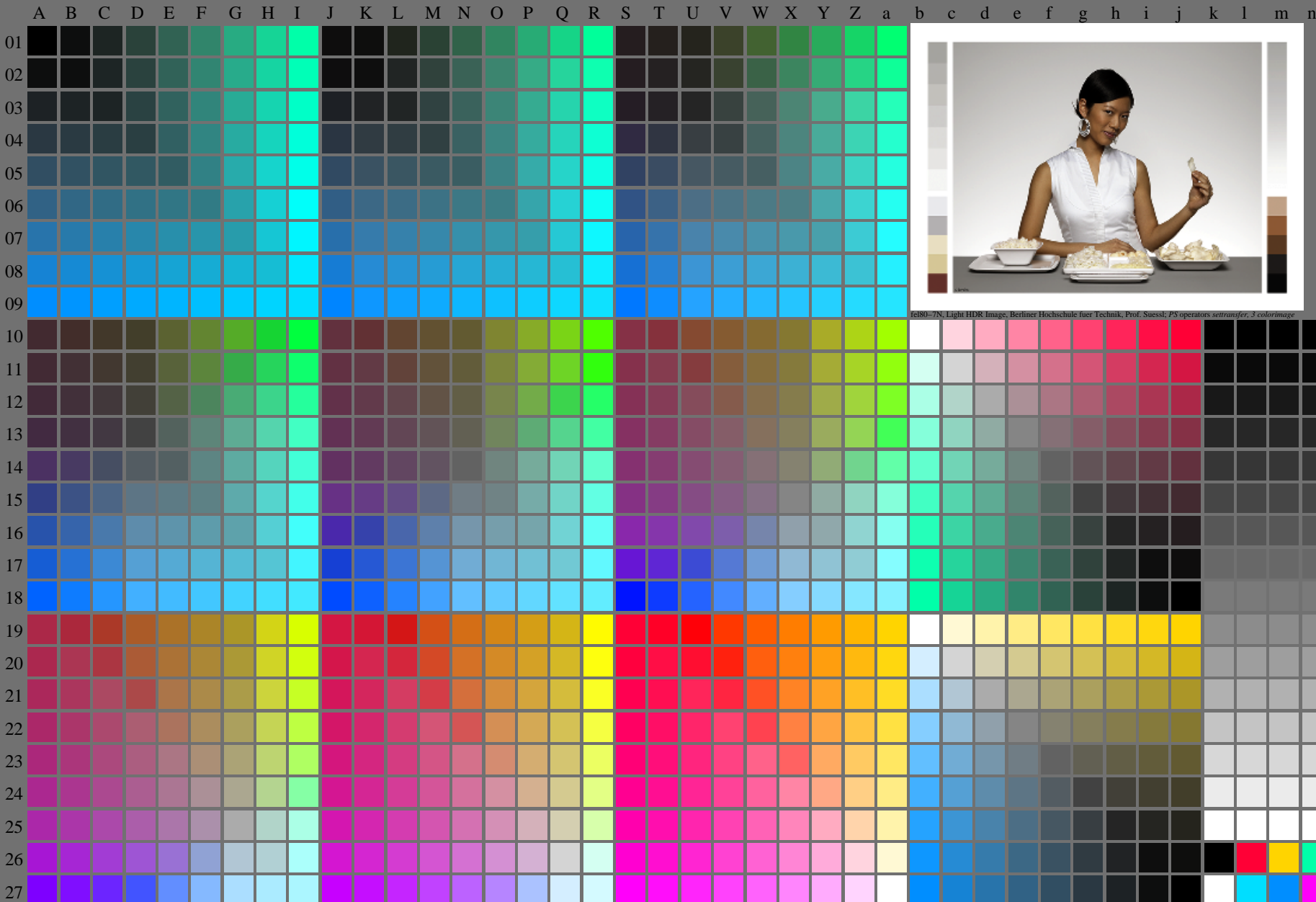
fel80-7N, Page 1/16, Test chart 2G with 40x27=1080 colours; digital equidistant 9 or 16 step colour scales; Colour data in column (A-n):  $rgb^*_A$ ,  $color_m = 1$ ,  $xchart = 8$ ,  $pchart = 0$

TUB-test chart fel8; fel8: Test chart uh\_e10 with 40x27=1080 colours; 1MR, DEH 000n/w/cmy0/rgb  
Digital equidistant 9 or 16 step colour scales, L-HDR;  $\gamma_R=1,0$   
→  $rgb^*_{de}$ , 130-0:

<http://farbe.li.tu-berlin.de/fel8/fel810fa.txt> /.ps; only vector graphic VG;  
see separate images of this page: <http://farbe.li.tu-berlin.de/fel8/fel8.htm>

see similar files of the whole series: <http://farbe.li.tu-berlin.de/fel8.htm>  
technical information: <http://farbe.li.tu-berlin.de/A/33872E.html>  
or <http://standards.iso.org/iso/9241/306/ed-2/index.html>

TUB registration: 20240301-fel8/fel810fa.txt /.ps  
application for evaluation and measurement of display or print output  
TUB material: code=rh4ta



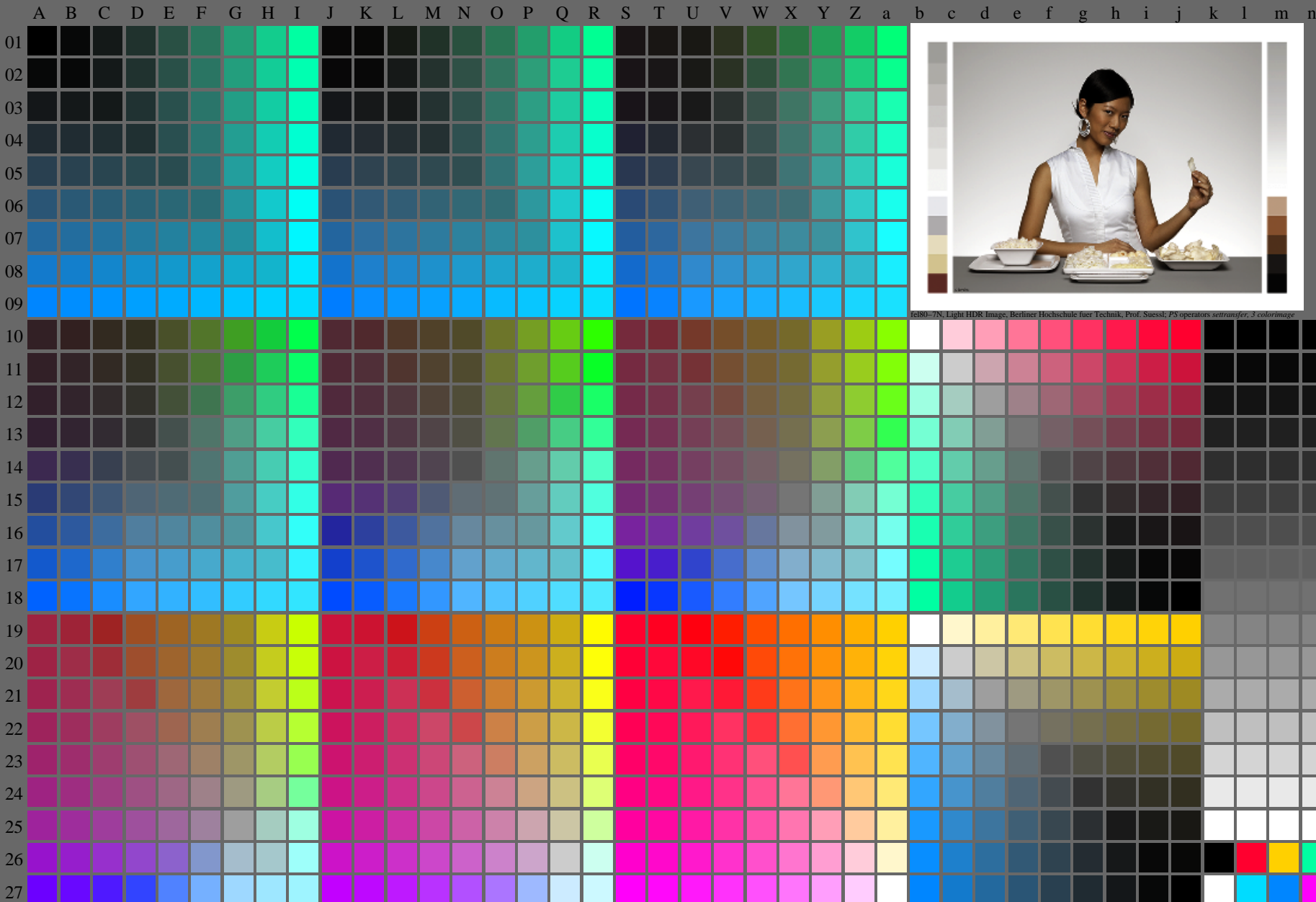
fel80-7N, Page 1/16, Test chart 2G with 40x27=1080 colours; digital equidistant 9 or 16 step colour scales; Colour data in column (A-n):  $rgb^*$ (A\_n), colorm = 1, xchart = 16, pchart = 0

TUB-test chart fel8; fel8: Test chart uh\_e10 with 40x27=1080 colours; 1MR, DEH 000n/w/cmy0/rgb  
Digital equidistant 9 or 16 step colour scales, L-HDR;  $\gamma_R=1,0$   
-> $rgb^*_{de}$ , 130-0:

<http://farbe.li.tu-berlin.de/fel8/fel810fa.txt> /.ps; only vector graphic VG;  
see separate images of this page: <http://farbe.li.tu-berlin.de/fel8/fel8.htm>

see similar files of the whole serie: <http://farbe.li.tu-berlin.de/fel8.htm>  
technical information: <http://farbe.li.tu-berlin.de/A/33872E.html>  
or <http://standards.iso.org/iso/9241/306/ed-2/index.html>

TUB registration: 20240301-fel8/fel810fa.txt /.ps  
application for evaluation and measurement of display or print output  
TUB material: code=rh4ta



fel80-7N, Light HDR Image, Berliner Hochschule fuer Technik, Prof. Suesst, PS operators seltransfer, 3 colorimage

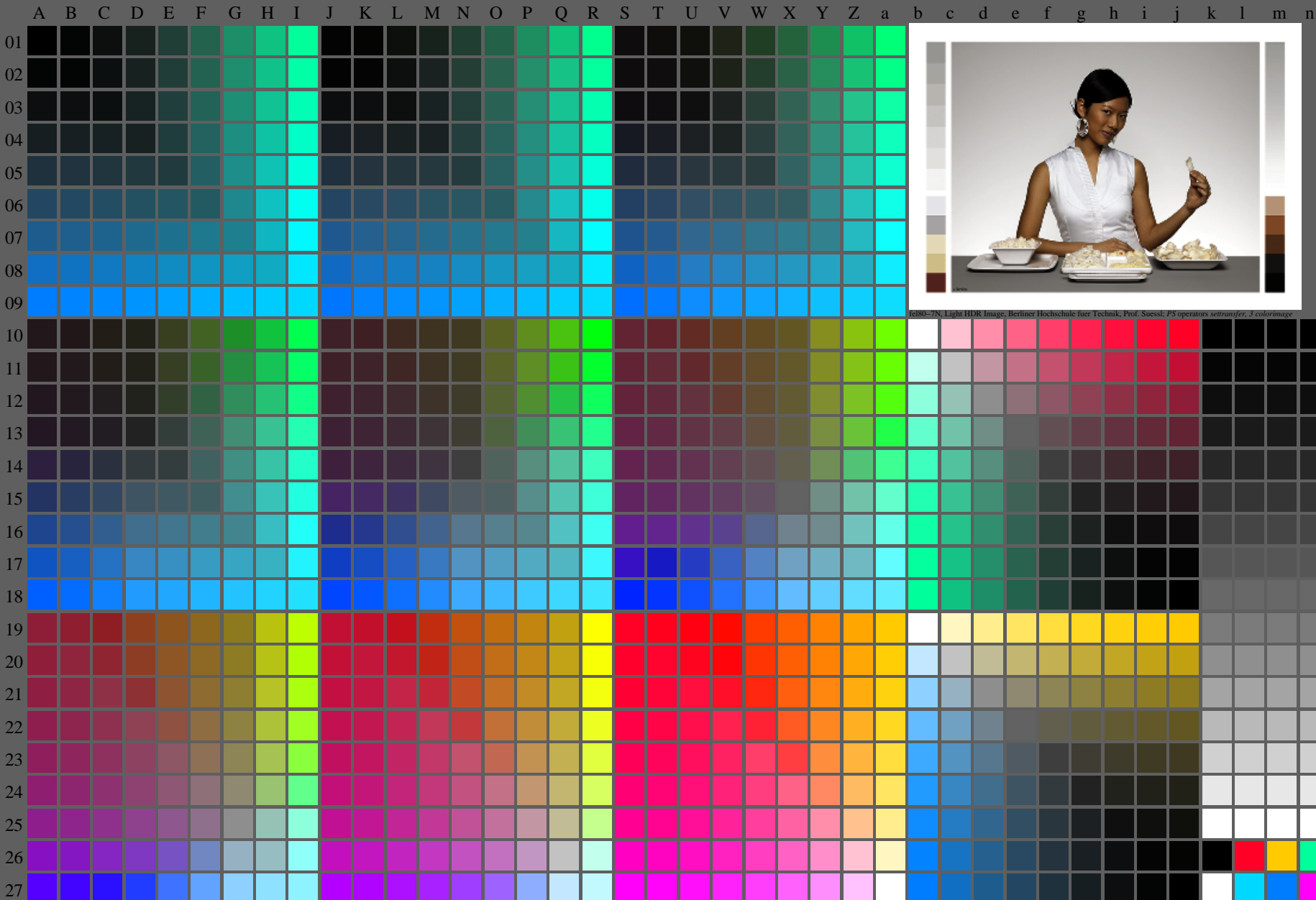
fel80-7N, Page 1/16, Test chart 2G with 40x27=1080 colours; digital equidistant 9 or 16 step colour scales; Colour data in column (A-n):  $rgb^*_d(A_n)$ , colorm = 1, xchart = 24, pchart = 0

TUB-test chart fel8; fel8: Test chart uh\_e10 with 40x27=1080 colours; 1MR, DEH 000n/w/cmy0/rgb  
Digital equidistant 9 or 16 step colour scales, L-HDR;  $\gamma_R=1,0$   
 $\rightarrow rgb^*_{de}, 130-0:$

<http://farbe.li.tu-berlin.de/fel8/fel810fa.txt> /.ps; only vector graphic VG;  
see separate images of this page: <http://farbe.li.tu-berlin.de/fel8/fel8.htm>

see similar files of the whole series: <http://farbe.li.tu-berlin.de/fel8.htm>  
technical information: <http://farbe.li.tu-berlin.de/A/33872E.html>  
or <http://standards.iso.org/iso/9241/306/ed-2/index.html>

TUB registration: 20240301-fel8/fel810fa.txt /.ps  
application for evaluation and measurement of display or print output  
TUB material: code=rh4ta



fel80-7N, Light HDR Image, Berliner Hochschule fuer Technik, Prof. Suesst, PS operators seltransfer, 3 colorimage

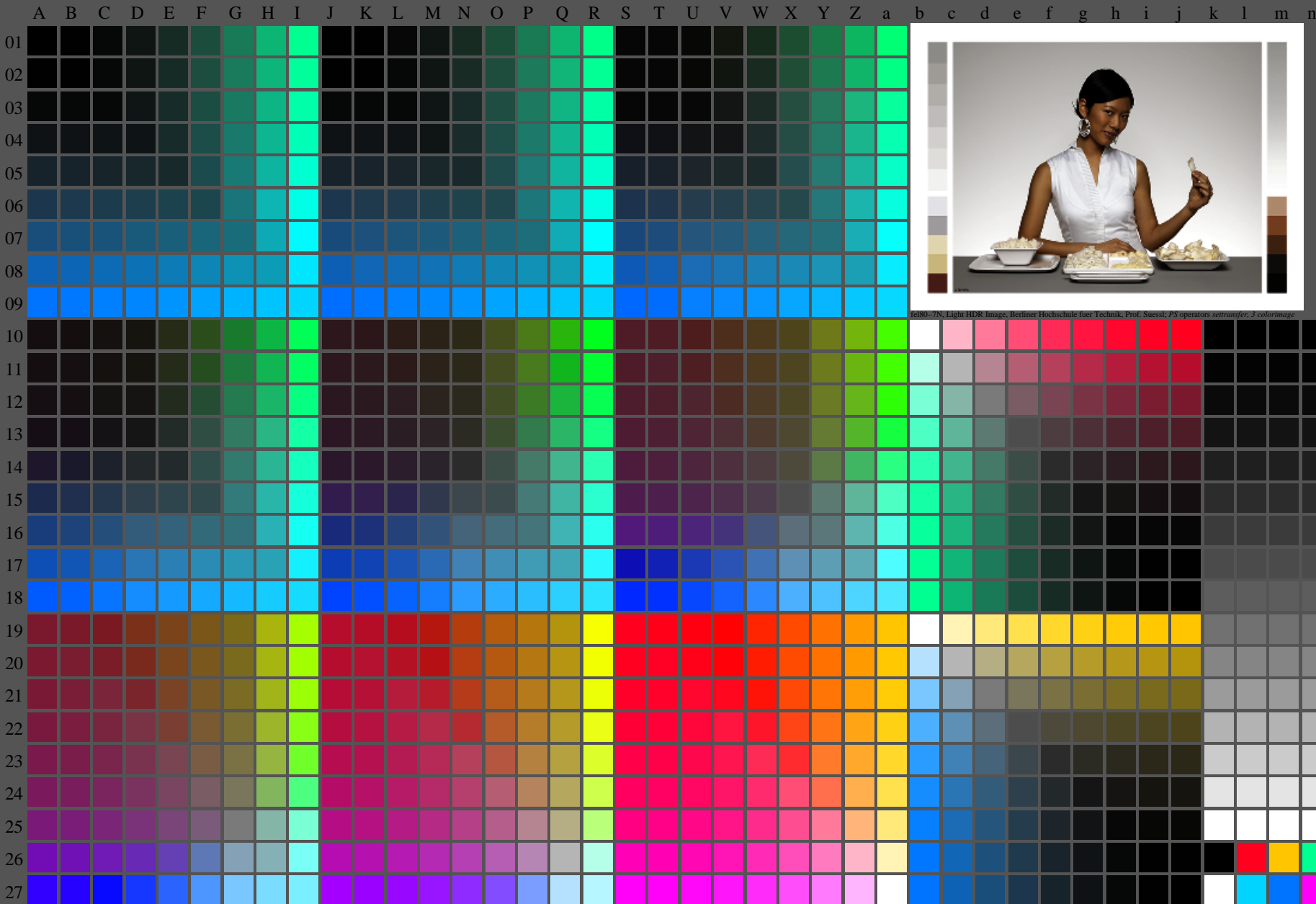
fel80-7N, Page 1/16, Test chart 2G with 40x27=1080 colours; digital equidistant 9 or 16 step colour scales; Colour data in column (A-n):  $rgb^*_d(A_n)$ , colorm = 1, xchart = 32, pchart = 0

TUB-test chart fel8; fel8: Test chart uh\_e10 with 40x27=1080 colours; 1MR, DEH 000n/w/cmy0/rgb  
Digital equidistant 9 or 16 step colour scales, L-HDR;  $\gamma_R=1,0$   
-> $rgb^*_{de}$ , 130-0:

<http://farbe.li.tu-berlin.de/fel8/fel810fa.txt> /.ps; only vector graphic VG;  
see separate images of this page: <http://farbe.li.tu-berlin.de/fel8/fel8.htm>

see similar files of the whole series: <http://farbe.li.tu-berlin.de/fel8.htm>  
technical information: <http://farbe.li.tu-berlin.de/A/33872E.html>  
or <http://standards.iso.org/iso/9241/306/ed-2/index.html>

TUB registration: 20240301-fel8/fel810fa.txt /.ps  
application for evaluation and measurement of display or print output  
TUB material: code=rh4ta



fel80-7N, Light HDR Image, Berliner Hochschule fuer Technik, Prof. Suesst, PS operators selbster, 3 colorimage

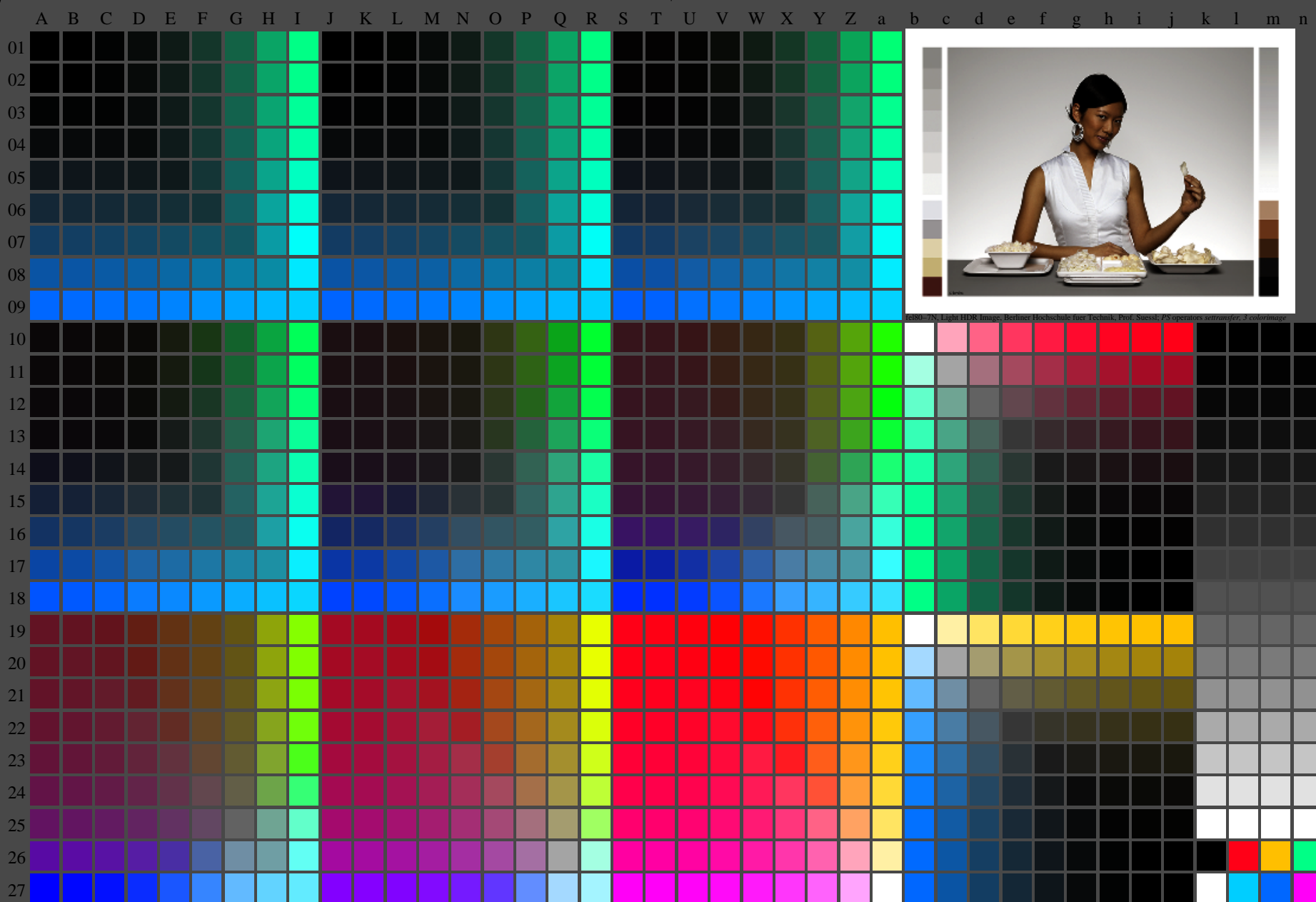
fel80-7N, Page 1/16, Test chart 2G with 40x27=1080 colours; digital equidistant 9 or 16 step colour scales; Colour data in column (A-n):  $rgb^*_{de}$  (A\_n), colorm = 1, xchart = 40, pchart = 0

TUB-test chart fel8; fel8: Test chart uh\_e10 with 40x27=1080 colours; 1MR, DEH 000n/w/cmy0/rgb  
Digital equidistant 9 or 16 step colour scales, L-HDR;  $\gamma_R=1,0$   
-> $rgb^*_{de}$ , 130-0:

<http://farbe.li.tu-berlin.de/fel8/fel810fa.txt> /.ps; only vector graphic VG;  
see separate images of this page: <http://farbe.li.tu-berlin.de/fel8/fel8.htm>

see similar files of the whole serie: <http://farbe.li.tu-berlin.de/fels.htm>  
technical information: <http://farbe.li.tu-berlin.de/A/33872E.html>  
or <http://standards.iso.org/iso/9241/306/ed-2/index.html>

TUB registration: 20240301-fel8/fel810fa.txt /.ps  
application for evaluation and measurement of display or print output  
TUB material: code=rh4ta



fel80-7N, Light HDR Image, Berliner Hochschule fuer Technik, Prof. Süssel, PS operators selbster, 3 colorimage

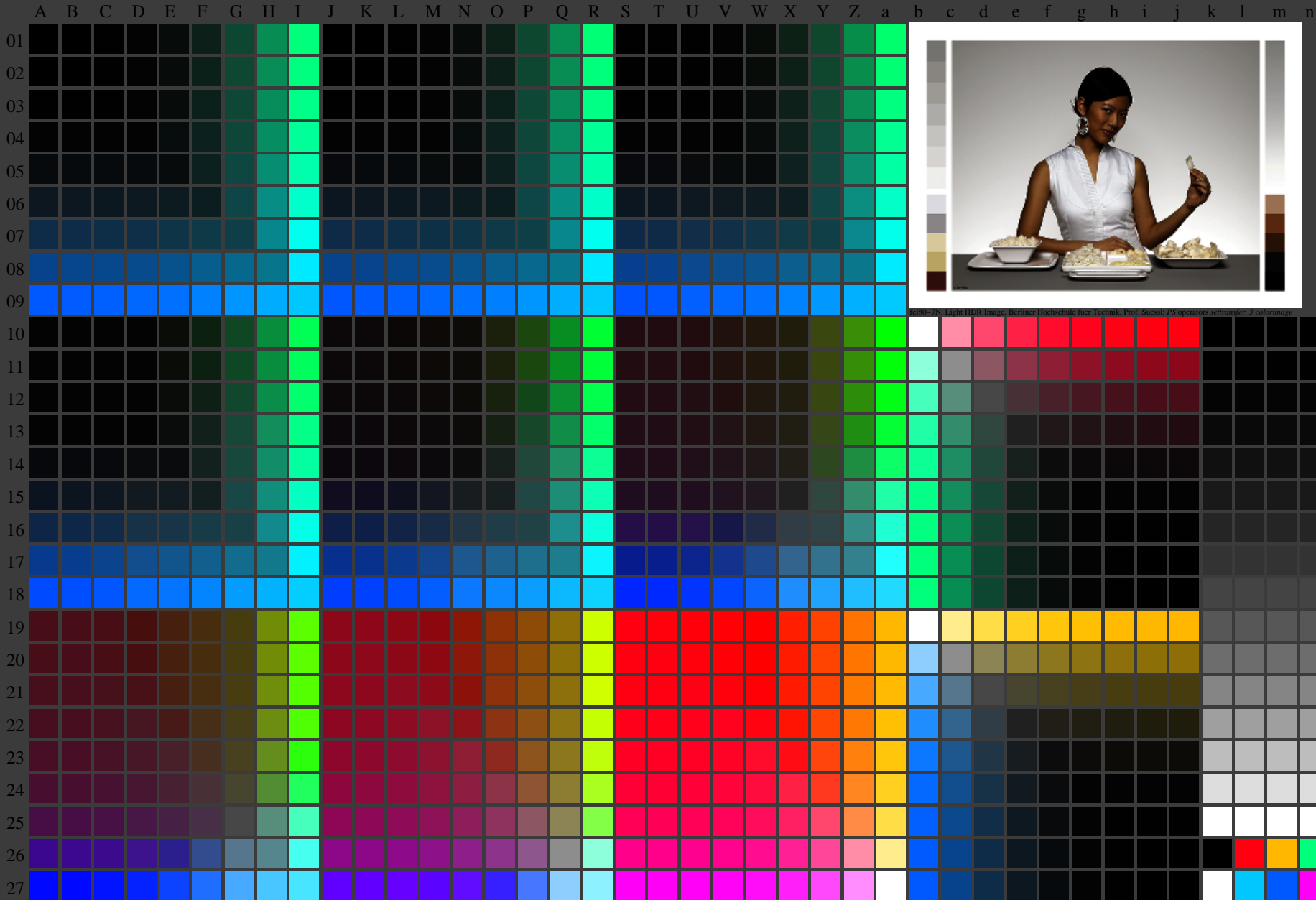
fel80-7N, Page 1/16, Test chart 2G with 40x27=1080 colours; digital equidistant 9 or 16 step colour scales; Colour data in column (A-n):  $rgb^*_{de}$  (A\_n), colorm = 1, xchart = 48, pchart = 0

TUB-test chart fel8; fel8: Test chart uh\_e10 with 40x27=1080 colours; 1MR, DEH 000n/w/cmy0/rgb  
Digital equidistant 9 or 16 step colour scales, L-HDR;  $\gamma_R=1,0$   
-> $rgb^*_{de}$ , 130-0:

<http://farbe.li.tu-berlin.de/fel8/fel810fa.txt> /.ps; only vector graphic VG;  
see separate images of this page: <http://farbe.li.tu-berlin.de/fel8/fel8.htm>

see similar files of the whole serie: <http://farbe.li.tu-berlin.de/fels.htm>  
technical information: <http://farbe.li.tu-berlin.de/A/33872E.html>  
or <http://standards.iso.org/iso/9241/306/ed-2/index.html>

TUB registration: 20240301-fel8/fel810fa.txt /.ps  
application for evaluation and measurement of display or print output  
TUB material: code=rh4ta



fel80-7N, Page 1/16, Test chart 2G with 40x27=1080 colours; digital equidistant 9 or 16 step colour scales; Colour data in column (A-n):  $rgb^*_{de}$  (A\_n), colorm = 1, xchart = 56, pchart = 0

TUB-test chart fel8; fel8: Test chart uh\_e10 with 40x27=1080 colours; 1MR, DEH 000n/w/cmy0/rgb  
Digital equidistant 9 or 16 step colour scales, L-HDR;  $\gamma_R=1,0$   
-> $rgb^*_{de}$ , 130-0: