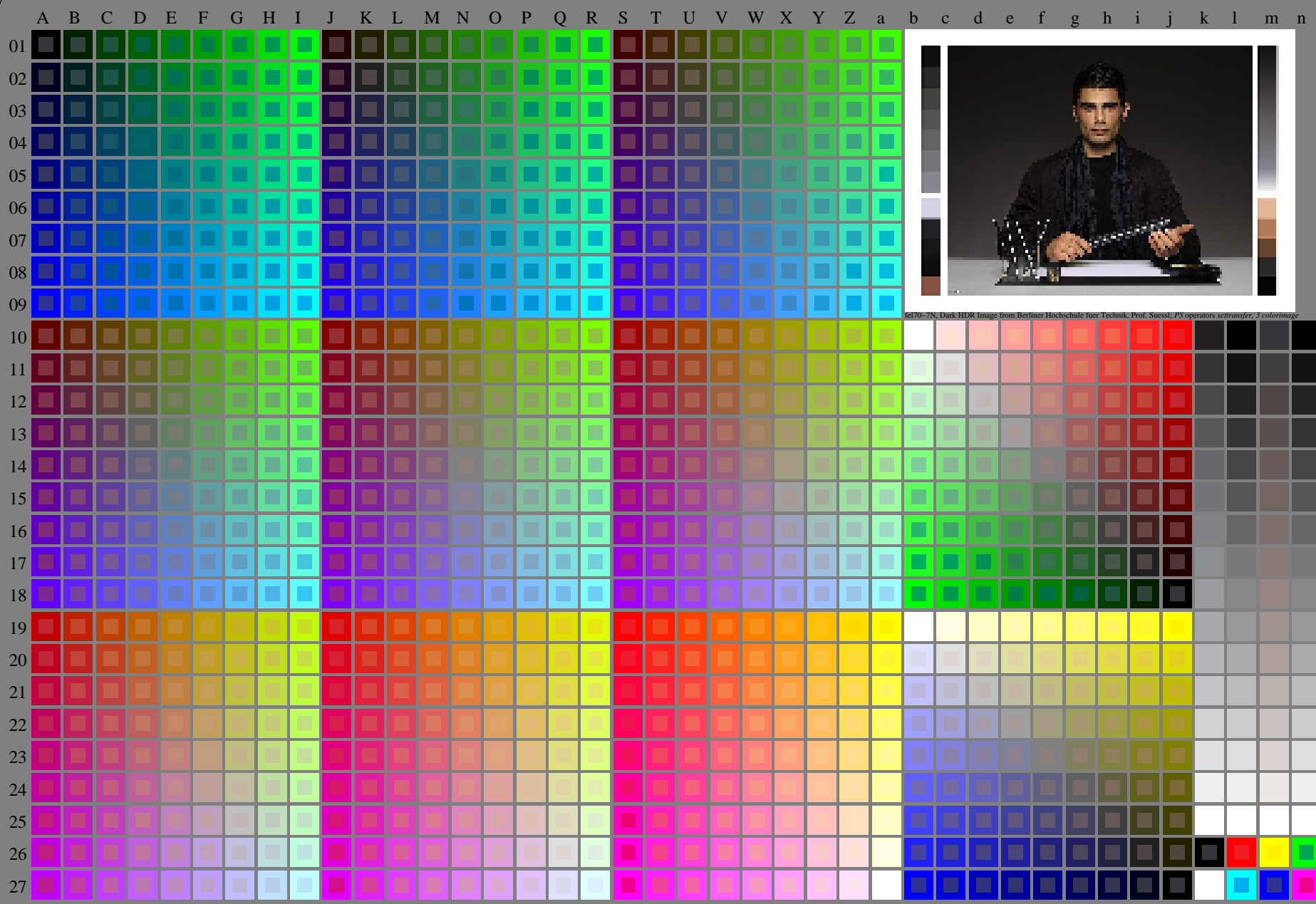


<http://farbe.li.tu-berlin.de/fel7/fel710np.pdf> / .ps; only vector graphic VG; start output  
see separate images of this page: <http://farbe.li.tu-berlin.de/fel7/fel7.htm>

see similar files of the whole serie: <http://farbe.li.tu-berlin.de/fel5.htm>  
technical information: <http://farbe.li.tu-berlin.de/A/33872E.htm>  
or <http://standards.iso.org/iso/9241/506/ed-2/index.html>



fel70-7N, Dark HDR Image from Berliner Hochschule fuer Technik, Prof. Suesel; PS operators settransfer\_3\_colorimage

TUB registration: 20240301-fel7/fel710np.pdf / .ps  
application for evaluation and measurement of display or print output

TUB material: code=rh4ta

fel70-7N, Page 1/16, Test chart 2G with 40x27=1080 colours; digital equidistant 9 or 16 step colour scales; Colour data in column (A-n): rgb + cmy0 (A\_j + k26\_n27), 000n (k), w (l), nnn0 (m), www (n), colorm = 0, xchart = 0, pchart = 0

TUB-test chart fel7; fel7: Test chart ul\_d08 with 40x27=1080 colours; DH  
Digital equidistant 9 or 16 step colour scales, D-HDR;  $\gamma_R=0,8$

000n/w/cmy0/rgb  
->rgb\*d, 030-0:

