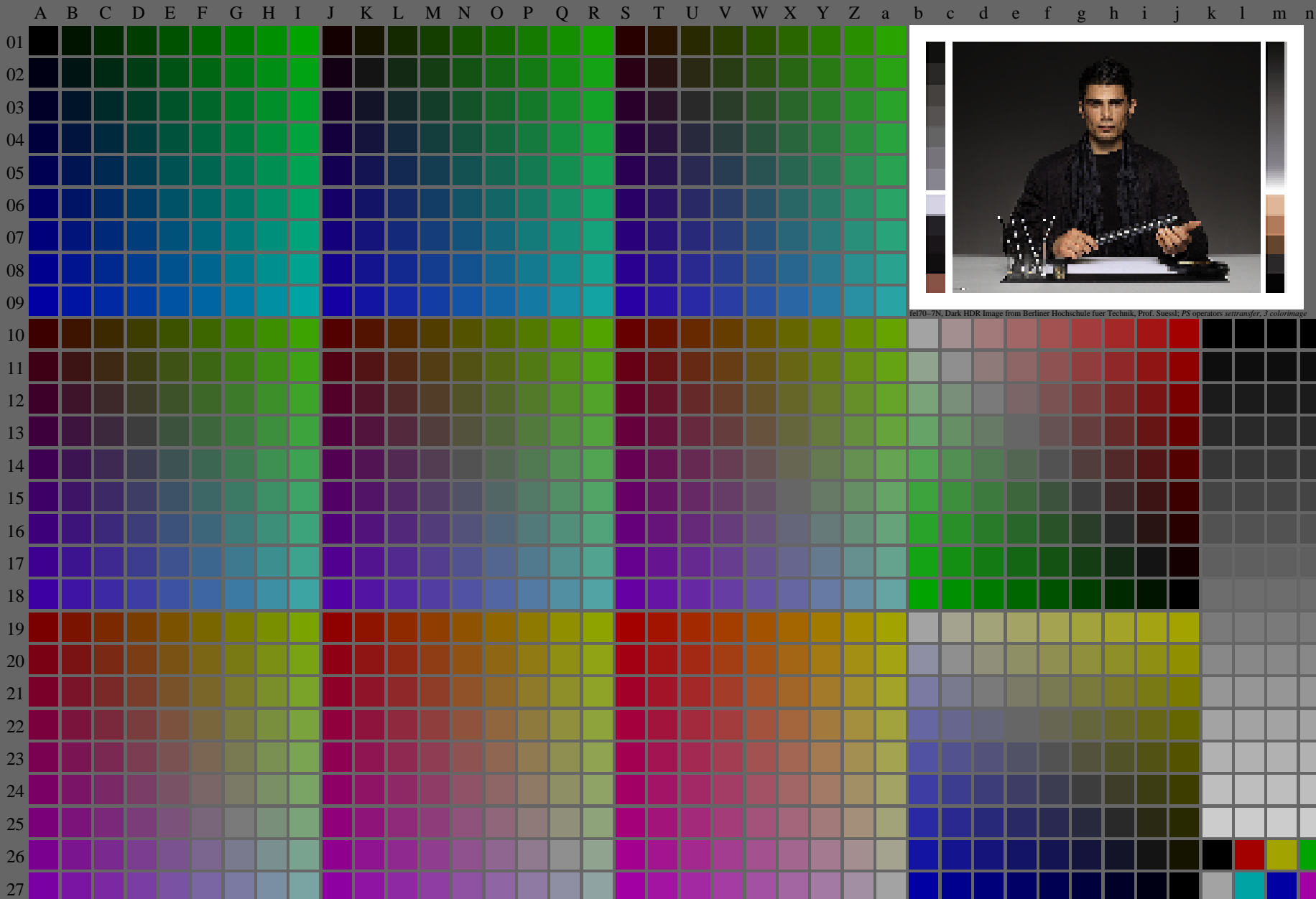


<http://farbe.li.tu-berlin.de/fel7/fel710fa.txt/.ps>; only vector graphic VG; start output  
see separate images of this page: <http://farbe.li.tu-berlin.de/fel7/fel7.htm>

see similar files of the whole series: <http://farbe.li.tu-berlin.de/fels.htm>  
technical information: <http://farbe.li.tu-berlin.de/A/33872E.html>  
or <http://standards.iso.org/iso/9241/306/ed-2/index.html>

TUB registration: 20240301-fel7/fel710fa.txt/.ps  
application for evaluation and measurement of display or print output  
TUB material: code=rh4ta



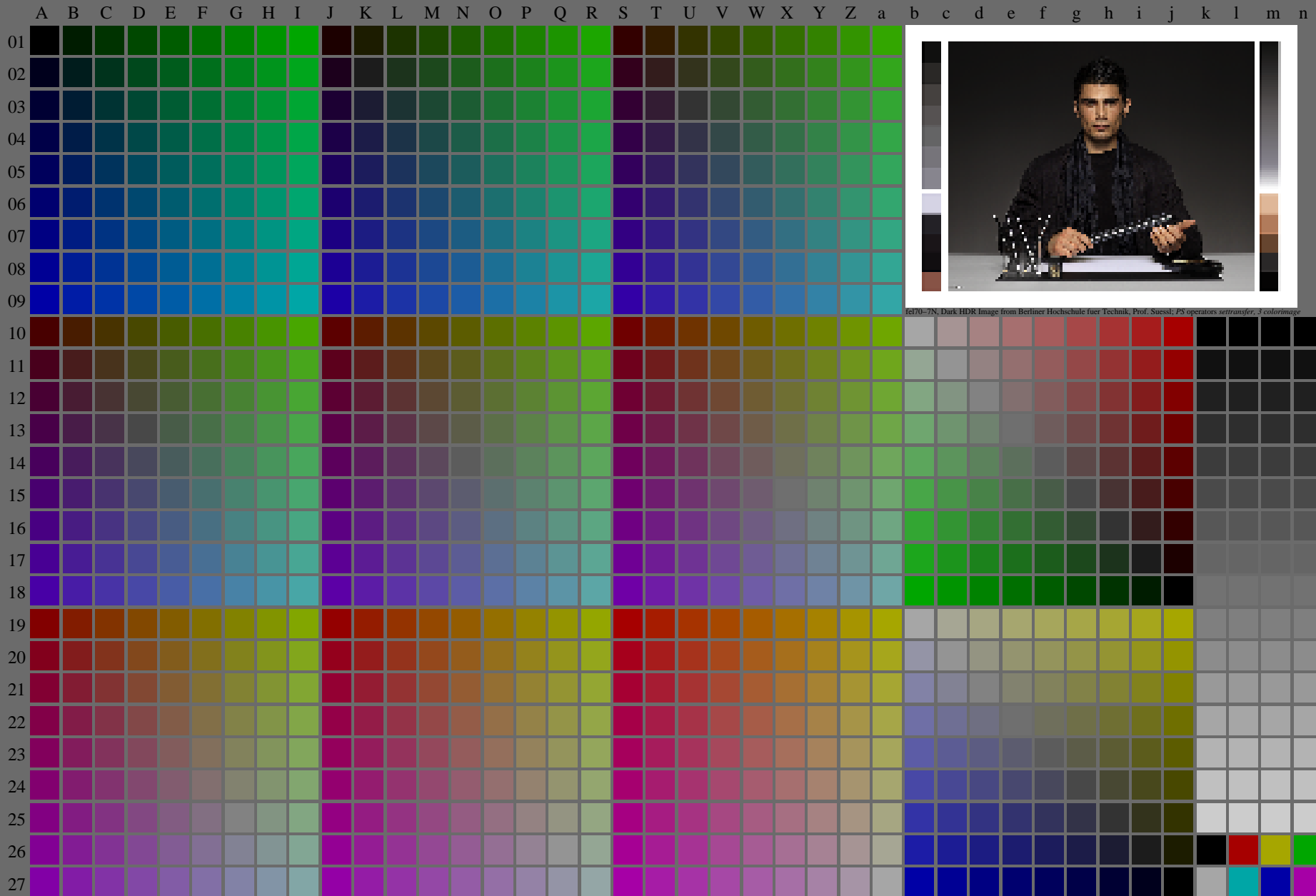
fel70-7N, Page 1/16, Test chart 2G with 40x27=1080 colours; digital equidistant 9 or 16 step colour scales; Colour data in column (A-n):  $rgb^* (A_n)$ ,  $colorm = 1$ ,  $xchart = 0$ ,  $pchart = 0$

TUB-test chart fel7; fel7: Test chart ul\_d08 with 40x27=1080 colours; 1MR, DH 000n/w/cmy0/rgb  
Digital equidistant 9 or 16 step colour scales, D-HDR;  $\gamma_R=0,8$   
-> $rgb^*_d, 130:0$

<http://farbe.li.tu-berlin.de/fel7/fel710fa.txt> / .ps; only vector graphic VG;  
see separate images of this page: <http://farbe.li.tu-berlin.de/fel7/fel7.htm>

see similar files of the whole series: <http://farbe.li.tu-berlin.de/fels.htm>  
technical information: <http://farbe.li.tu-berlin.de/A/33872E.html>  
or <http://standards.iso.org/iso/9241/306/ed-2/index.html>

TUB registration: 20240301-fel7/fel710fa.txt / .ps  
application for evaluation and measurement of display or print output  
TUB material: code=rh4ta



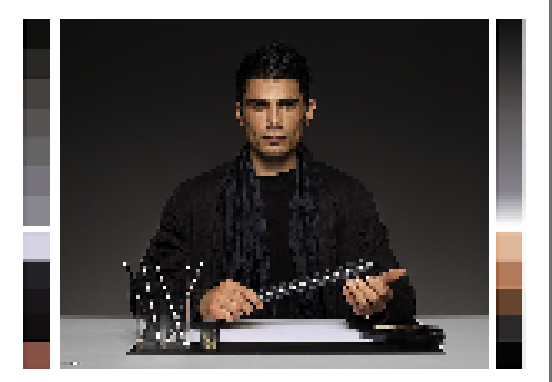
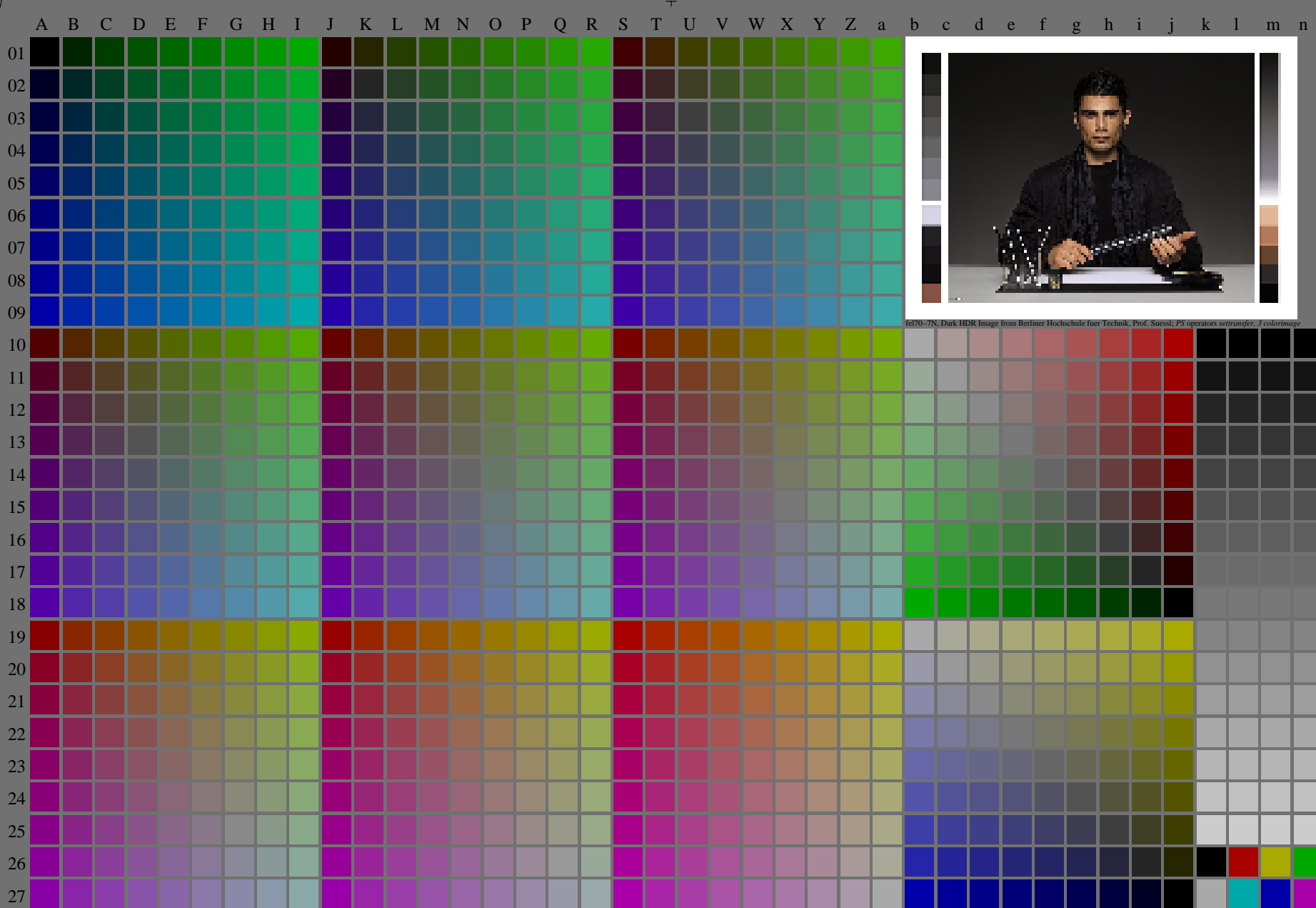
fel70-7N, Dark HDR Image from Berliner Hochschule fuer Technik, Prof. Suessl; PS operators settransfer\_3 colorImage

fel70-7N, Page 1/16, Test chart 2G with 40x27=1080 colours; digital equidistant 9 or 16 step colour scales; Colour data in column (A-n):  $rgb^* (A_n)$ ,  $colorm = 1$ ,  $xchart = 1$ ,  $pchart = 0$

TUB-test chart fel7; fel7: Test chart ul\_d08 with 40x27=1080 colours; 1MR, DH 000n/w/cmy0/rgb  
Digital equidistant 9 or 16 step colour scales, D-HDR;  $\gamma_R=0,8$   
-> $rgb^*_d, 131-0$ :

<http://farbe.li.tu-berlin.de/fel7/fel710fa.txt/.ps>; only vector graphic VG;  
see separate images of this page: <http://farbe.li.tu-berlin.de/fel7/fel7.htm>

see similar files of the whole series: <http://farbe.li.tu-berlin.de/fels.htm>  
technical information: <http://farbe.li.tu-berlin.de/A/33872E.html>  
or <http://standards.iso.org/iso/9241/306/ed-2/index.html>



fel70-7N, Dark HDR Image from Berliner Hochschule fuer Technik, Prof. Suessl; PS operators settransfer\_3 colorImage

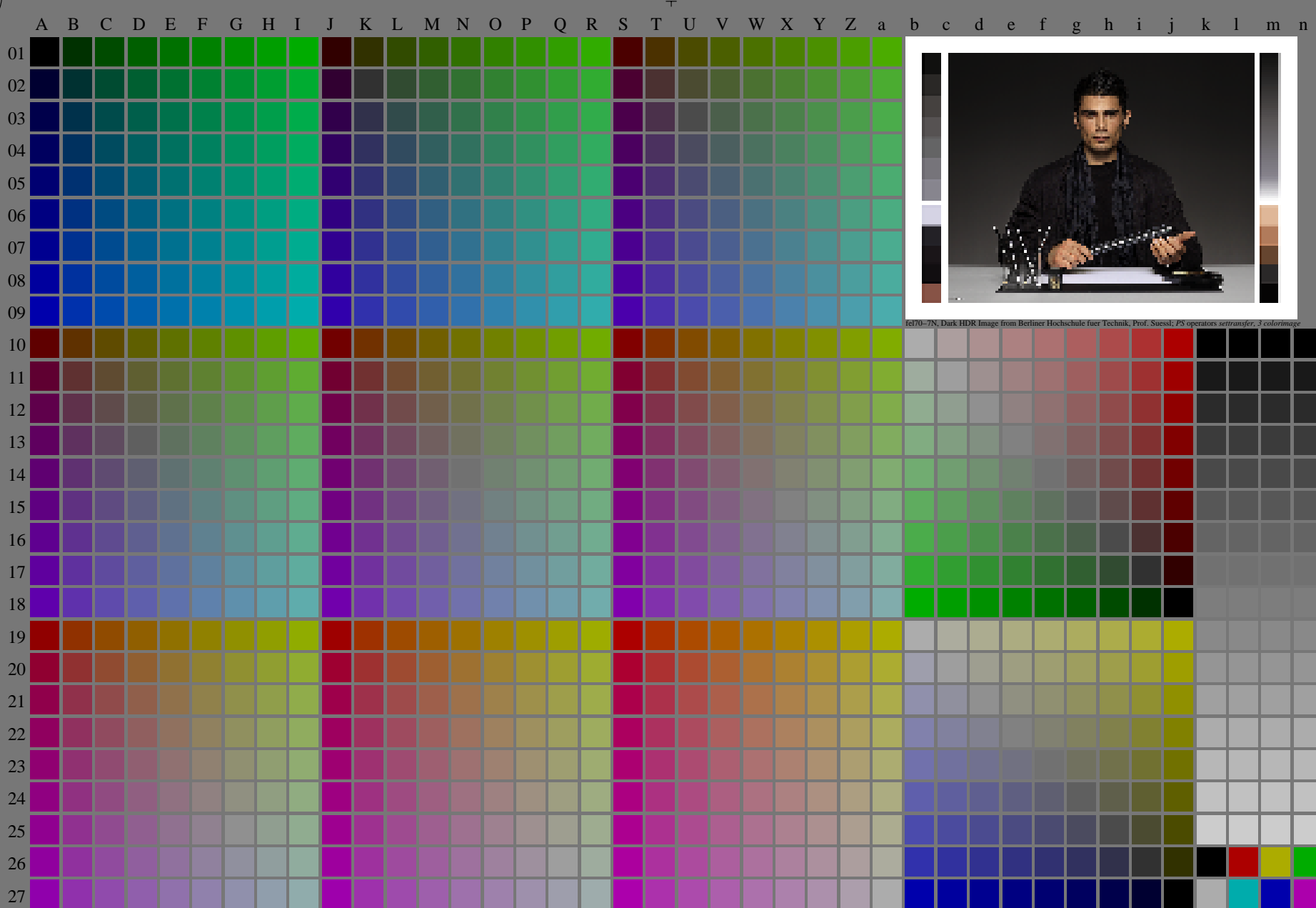
TUB registration: 20240301-fel7/fel710fa.txt/.ps  
application for evaluation and measurement of display or print output  
TUB material: code=rh4ta

fel70-7N, Page 1/16, Test chart 2G with 40x27=1080 colours; digital equidistant 9 or 16 step colour scales; Colour data in column (A-n):  $rgb^* (A_n)$ , colorm = 1, xchart = 2, pchart = 0

TUB-test chart fel7; fel7: Test chart ul\_d08 with 40x27=1080 colours; 1MR, DH 000n/w/cmy0/rgb  
Digital equidistant 9 or 16 step colour scales, D-HDR;  $\gamma_R=0,8$   
-> $rgb^*_d, 132-0$ :

<http://farbe.li.tu-berlin.de/fel7/fel710fa.txt> /.ps; only vector graphic VG;  
see separate images of this page: <http://farbe.li.tu-berlin.de/fel7/fel7.htm>

see similar files of the whole series: <http://farbe.li.tu-berlin.de/fels.htm>  
technical information: <http://farbe.li.tu-berlin.de/A/33872E.html>  
or <http://standards.iso.org/iso/9241/306/ed-2/index.html>



TUB registration: 20240301-fel7/fel710fa.txt /.ps  
application for evaluation and measurement of display or print output  
TUB material: code=rh4ta

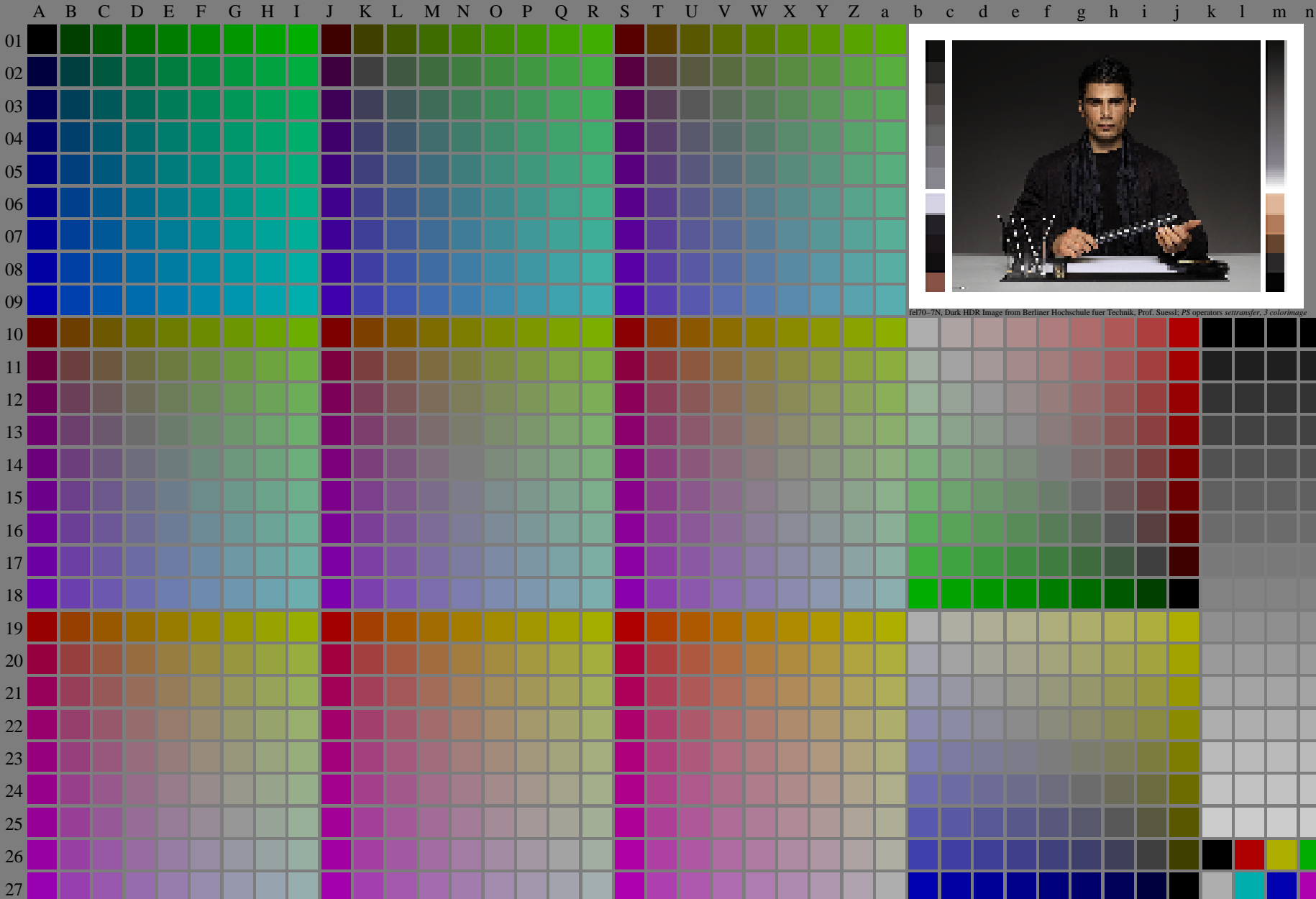
fel70-7N, Page 1/16, Test chart 2G with 40x27=1080 colours; digital equidistant 9 or 16 step colour scales; Colour data in column (A-n):  $rgb^*_d(A_n)$ ,  $colorm = 1$ ,  $xchart = 3$ ,  $pchart = 0$

TUB-test chart fel7; fel7: Test chart ul\_d08 with 40x27=1080 colours; 1MR, DH 000n/w/cmy0/rgb  
Digital equidistant 9 or 16 step colour scales, D-HDR;  $\gamma_R=0,8$   
-> $rgb^*_d, 133-0$ :

<http://farbe.li.tu-berlin.de/fel7/fel710fa.txt> /.ps; only vector graphic VG;  
see separate images of this page: <http://farbe.li.tu-berlin.de/fel7/fel7.htm>

see similar files of the whole series: <http://farbe.li.tu-berlin.de/fels.htm>  
technical information: <http://farbe.li.tu-berlin.de/A/33872E.html>  
or <http://standards.iso.org/iso/9241/306/ed-2/index.html>

TUB registration: 20240301-fel7/fel710fa.txt /.ps  
application for evaluation and measurement of display or print output  
TUB material: code=rh4ta



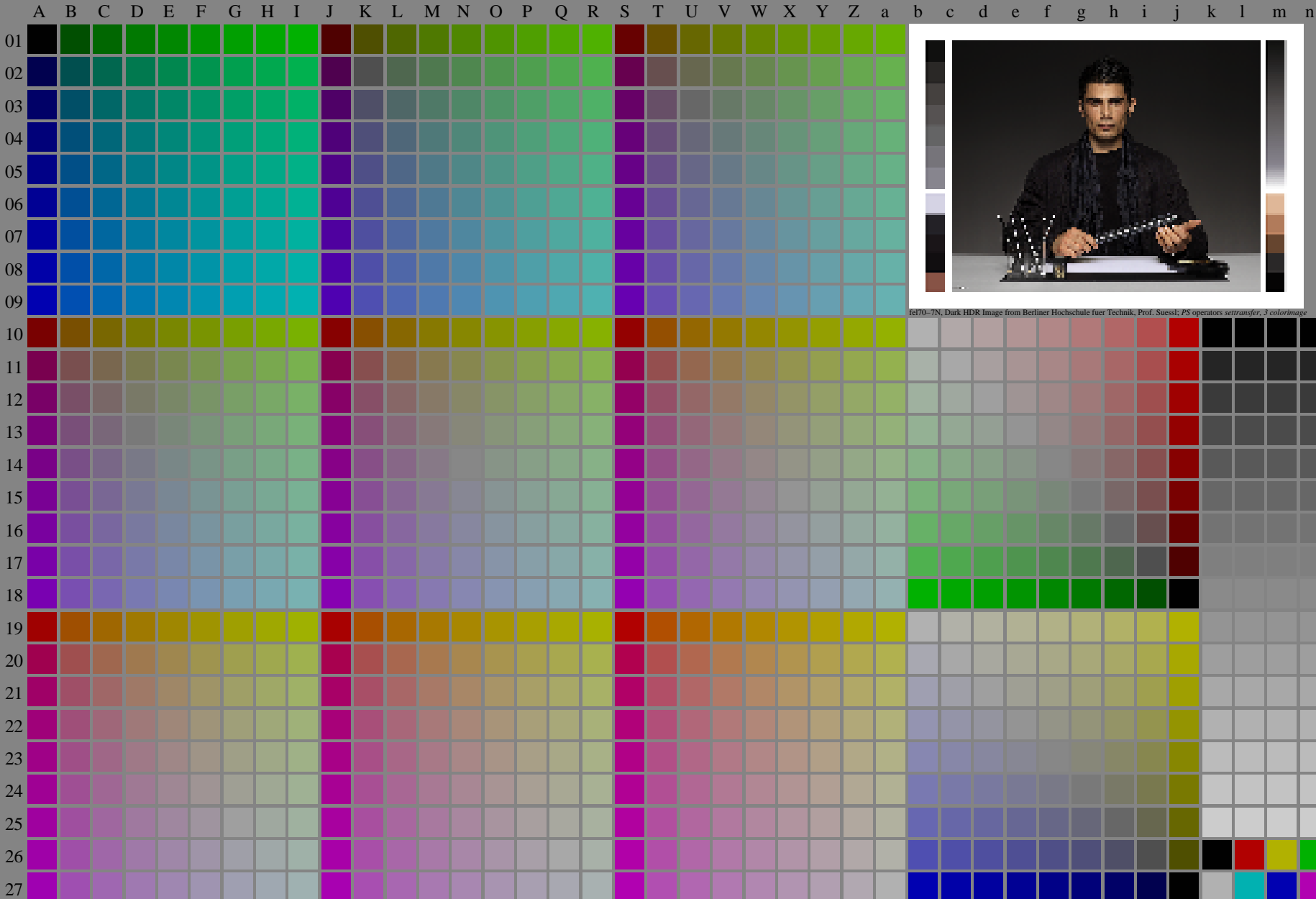
fel70-7N, Page 1/16, Test chart 2G with 40x27=1080 colours; digital equidistant 9 or 16 step colour scales; Colour data in column (A-n):  $rgb^*(A_n)$ ,  $colorm = 1$ ,  $xchart = 4$ ,  $pchart = 0$

TUB-test chart fel7; fel7: Test chart ul\_d08 with 40x27=1080 colours; 1MR, DH 000n/w/cmy0/rgb  
Digital equidistant 9 or 16 step colour scales, D-HDR;  $\gamma_R=0,8$   
-> $rgb^*_d$ , 134-0:

<http://farbe.li.tu-berlin.de/fel7/fel710fa.txt> /.ps; only vector graphic VG;  
see separate images of this page: <http://farbe.li.tu-berlin.de/fel7/fel7.htm>

see similar files of the whole series: <http://farbe.li.tu-berlin.de/fels.htm>  
technical information: <http://farbe.li.tu-berlin.de/A/33872E.html>  
or <http://standards.iso.org/iso/9241/306/ed-2/index.html>

TUB registration: 20240301-fel7/fel710fa.txt /.ps  
application for evaluation and measurement of display or print output  
TUB material: code=rh4ta



fel70-7N, Page 1/16, Test chart 2G with 40x27=1080 colours; digital equidistant 9 or 16 step colour scales; Colour data in column (A-n):  $rgb^*(A_n)$ ,  $colorm = 1$ ,  $xchart = 5$ ,  $pchart = 0$

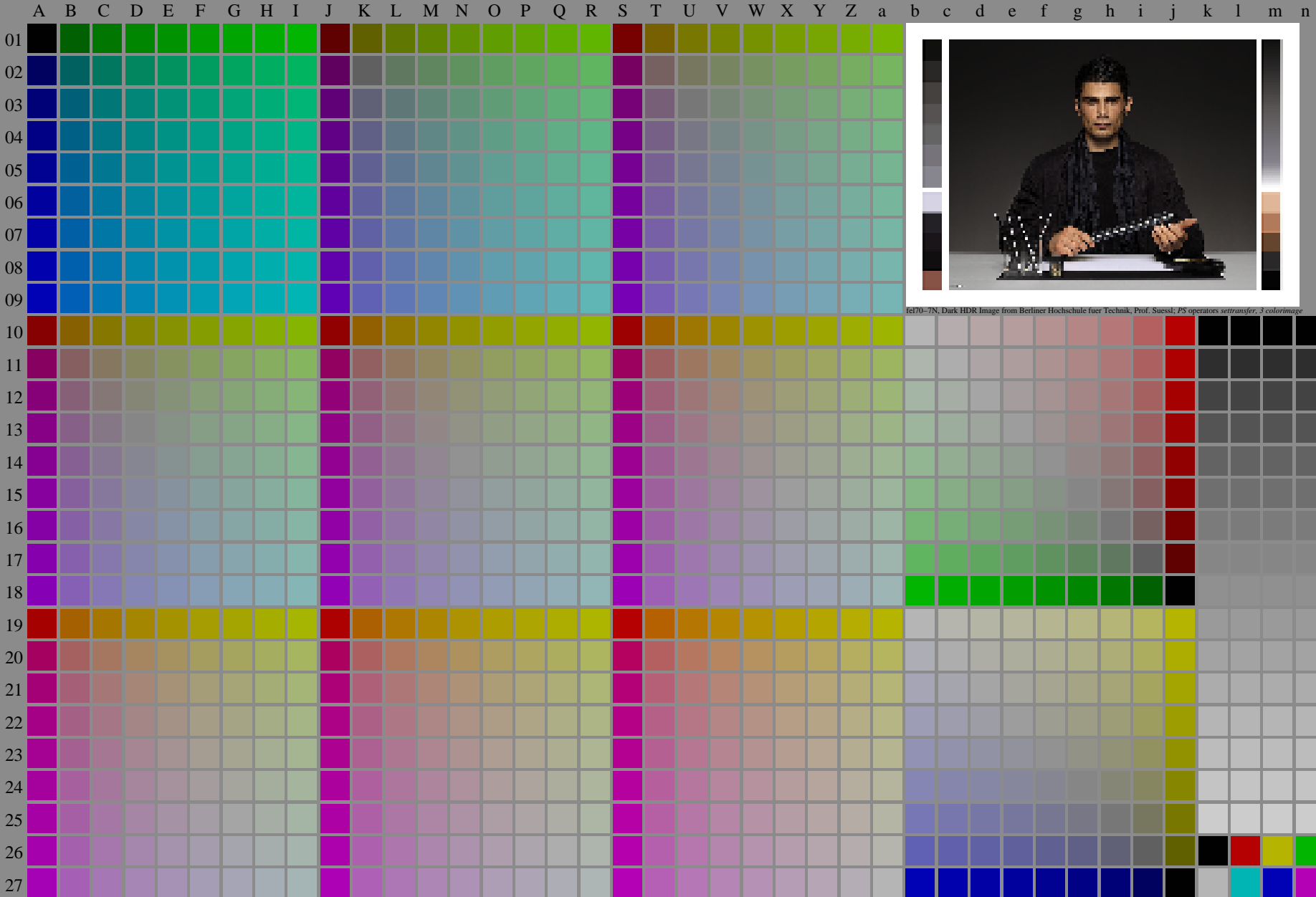
TUB-test chart fel7; fel7: Test chart ul\_d08 with 40x27=1080 colours; 1MR, DH 000n/w/cmy0/rgb  
Digital equidistant 9 or 16 step colour scales, D-HDR;  $\gamma_R=0,8$   
→ $rgb^*_d, 135-0$ :

<http://farbe.li.tu-berlin.de/fel7/fel710fa.txt> /.ps; only vector graphic VG;  
see separate images of this page: <http://farbe.li.tu-berlin.de/fel7/fel7.htm>

see similar files of the whole serie: <http://farbe.li.tu-berlin.de/fels.htm>  
technical information: <http://farbe.li.tu-berlin.de/A/33872E.html>  
or <http://standards.iso.org/iso/9241/306/ed-2/index.html>

TUB registration: 20240301-fel7/fel710fa.txt /.ps  
application for evaluation and measurement of display or print output

TUB material: code=rh4ta



fel70-7N, Page 1/16, Test chart 2G with 40x27=1080 colours; digital equidistant 9 or 16 step colour scales; Colour data in column (A-n):  $rgb^*(A_n)$ ,  $colorm = 1$ ,  $xchart = 6$ ,  $pchart = 0$

TUB-test chart fel7; fel7: Test chart ul\_d08 with 40x27=1080 colours; 1MR, DH 000n/w/cmy0/rgb  
Digital equidistant 9 or 16 step colour scales, D-HDR;  $\gamma_R=0,8$   
→ $rgb^*_d$ , 136-0:

<http://farbe.li.tu-berlin.de/fel7/fel710fa.txt> /.ps; only vector graphic VG;  
see separate images of this page: <http://farbe.li.tu-berlin.de/fel7/fel7.htm>

see similar files of the whole serie: <http://farbe.li.tu-berlin.de/fels.htm>  
technical information: <http://farbe.li.tu-berlin.de/A/33872E.html>  
or <http://standards.iso.org/iso/9241/306/ed-2/index.html>

TUB registration: 20240301-fel7/fel710fa.txt /.ps  
application for evaluation and measurement of display or print output  
TUB material: code=rh4ta



fel70-7N, Dark HDR Image from Berliner Hochschule fuer Technik, Prof. Suessli; PS operators settransfer, 3 colorImage

fel70-7N, Page 1/16, Test chart 2G with 40x27=1080 colours; digital equidistant 9 or 16 step colour scales; Colour data in column (A-n):  $rgb^*(A_n)$ , colorm = 1, xchart = 7, pchart = 0

TUB-test chart fel7; fel7: Test chart ul\_d08 with 40x27=1080 colours; 1MR, DH 000n/w/cmy0/rgb  
Digital equidistant 9 or 16 step colour scales, D-HDR;  $\gamma_R=0,8$   $\rightarrow rgb^*_d, 137-0:$