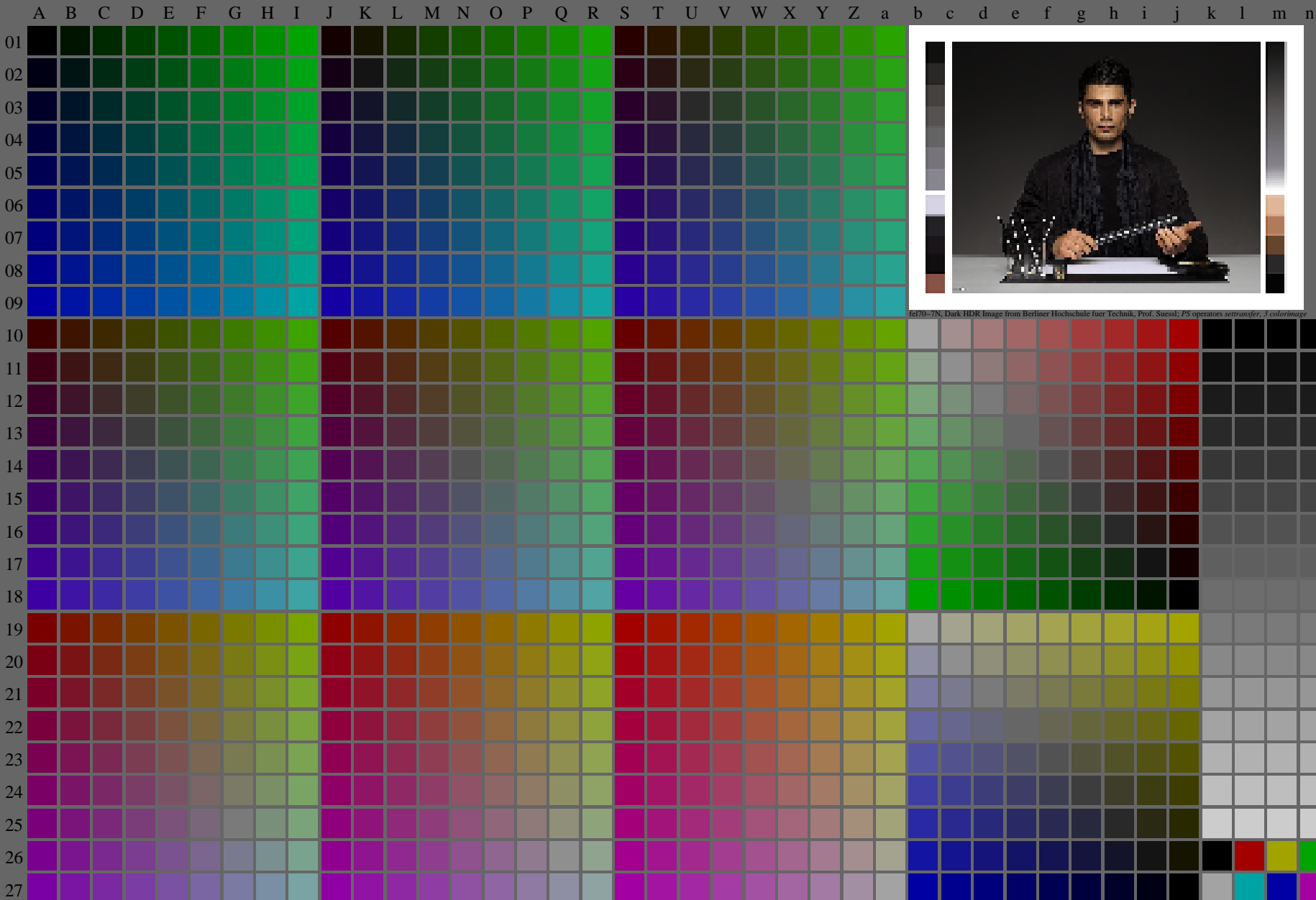


<http://farbe.li.tu-berlin.de/fel7/fel710fa.txt> / .ps; only vector graphic VG; start output
see separate images of this page: <http://farbe.li.tu-berlin.de/fel7/fel7.htm>

see similar files of the whole series: <http://farbe.li.tu-berlin.de/fels.htm>
technical information: <http://farbe.li.tu-berlin.de/A/33872E.html>
or <http://standards.iso.org/iso/9241/306/ed-2/index.html>

TUB registration: 20240301-fel7/fel710fa.txt / .ps
application for evaluation and measurement of display or print output
TUB material: code=rh4ta



fel70-7N, Dark HDR Image from Berliner Hochschule fuer Technik, Prof. Suesst; PS operators settransfer_3 colorImage

fel70-7N, Page 1/16, Test chart 2G with 40x27=1080 colours; digital equidistant 9 or 16 step colour scales; Colour data in column (A-n): $rgb^* (A_n)$, $colorm = 1$, $xchart = 0$, $pchart = 0$

TUB-test chart fel7; fel7: Test chart ul_d08 with 40x27=1080 colours; 1MR, DH 000n/w/cmy0/rgb
Digital equidistant 9 or 16 step colour scales, D-HDR; $\gamma_R=0,8$
-> rgb^*_d , 130-0:

<http://farbe.li.tu-berlin.de/fel7/fel710fa.txt> /.ps; only vector graphic VG; start output
 see separate images of this page: <http://farbe.li.tu-berlin.de/fel7/fel7.htm>

see similar files of the whole serie: <http://farbe.li.tu-berlin.de/fels.htm>
 technical information: <http://farbe.li.tu-berlin.de/A/33872E.htm>
 or <http://standards.iso.org/iso/9241/306/ed-2/index.html>

TUB registration: 20240301-fel7/fel710fa.txt /.ps
 application for evaluation and measurement of display or print output
 TUB material: code=rh4ta

i	LAB*ref	l*out	LAB*out	LAB*out/c-ref	ΔE^*
1	0.0	0.0	0.0	0.0	0.01
2	6.36	0.0	0.07	6.36	0.01
3	12.72	0.0	0.13	12.72	0.01
4	19.08	0.0	0.2	19.08	0.01
5	25.44	0.0	0.27	25.44	0.01
6	31.8	0.0	0.33	31.8	0.01
7	38.16	0.0	0.4	38.16	0.01
8	44.52	0.0	0.47	44.52	0.01
9	50.89	0.0	0.53	50.89	0.01
10	57.25	0.0	0.6	57.25	0.01
11	63.61	0.0	0.67	63.61	0.01
12	69.97	0.0	0.73	69.97	0.01
13	76.33	0.0	0.8	76.33	0.01
14	82.69	0.0	0.87	82.69	0.01
15	89.05	0.0	0.93	89.05	0.01
16	95.41	0.0	1.0	95.41	0.01
17	0.0	0.0	0.0	0.0	0.01
18	23.85	0.0	0.25	23.85	0.01
19	47.71	0.0	0.5	47.71	0.01
20	71.56	0.0	0.75	71.56	0.01
21	95.41	0.0	1.0	95.41	0.01

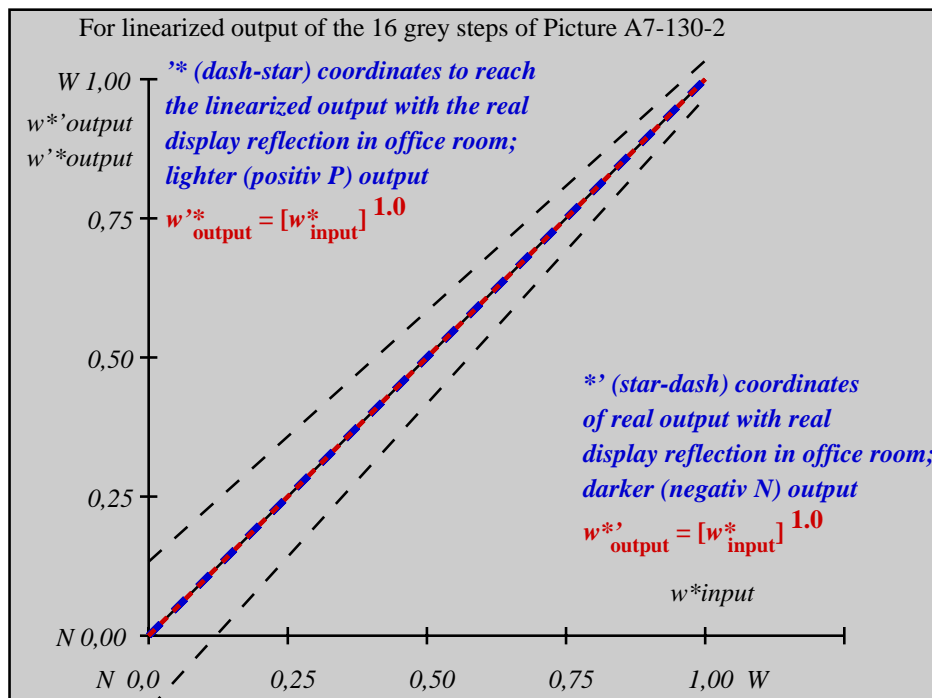
Start output S1
Specification according to ISO/IEC 15775 Annex G and DIN 33866-1 Annex G

Mean lightness difference (16 steps)
 $\Delta E^*_{CIELAB} = 0.0$

Mean lightness difference (5 steps)
 $\Delta L^*_{CIELAB} = 0.0$

Mean colour reproduction index: $R^*_{ab,m} = 100$

fel70-3N-130-2: File: Measure unknown; Device: Device unknown; Date: Date unknown



fel71-3N-130-2: File: Measure unknown; Device: Device unknown; Date: Date unknown

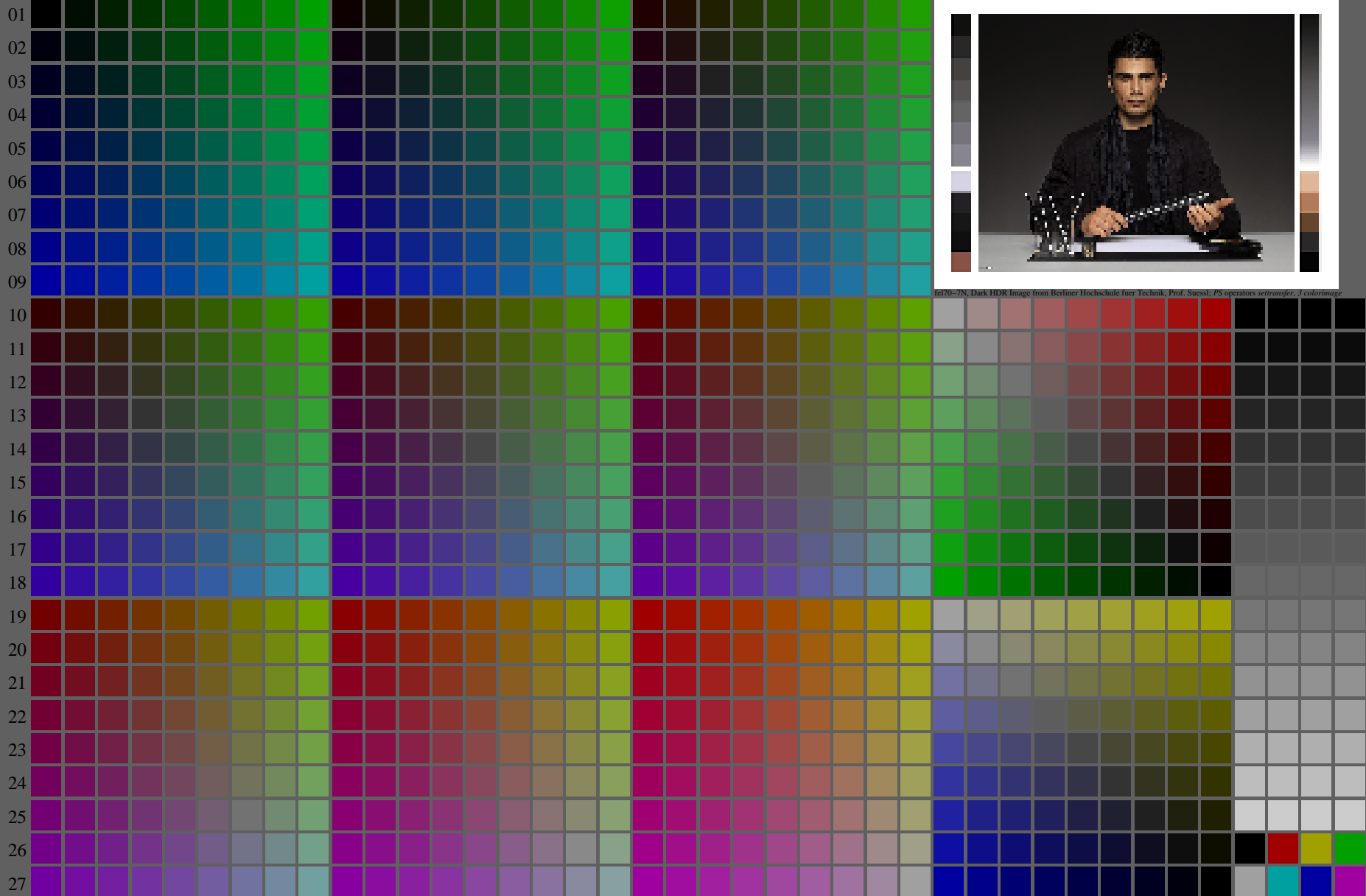
$L^*/Y_{intended}$ (absolute)	0.0/0.0	6.4/0.7	12.7/1.5	19.1/2.8	25.4/4.6	31.8/7.0	38.2/10.2	44.5/14.2	50.9/19.2	57.2/25.2	63.6/32.3	70.0/40.7	76.3/50.4	82.7/61.6	89.0/74.3	95.4/88.6
$w^* w^* w^*$ setrgb gp=1.0																
No. and Hex code	00;F	01;E	02;D	03;C	04;B	05;A	06;9	07;8	08;7	09;6	10;5	11;4	12;3	13;2	14;1	15;0
$w^* = l^*$ (relative)																
$w^*_{intended}$	0,000	0,067	0,133	0,200	0,267	0,333	0,400	0,467	0,533	0,600	0,667	0,733	0,800	0,867	0,933	1,000
w^*_{out}	0,0	0,067	0,133	0,2	0,267	0,333	0,4	0,467	0,533	0,6	0,667	0,733	0,8	0,867	0,933	1,0

fel70-7N-130-2: 16 visual equidistant L^* -grey steps; PS operator: $w^* w^* w^*$ setrgbcolor

TUB-test chart fel7; fel7: In-output relation according to ISO 9241-306; 1MR, DH 000n/w/cmy0/rgb
 Viewing Y contrast $Y_W:Y_N=88,9:0,31$; Y_N range 0,0 to <0,46, D-HDR; $\gamma_R=0,8$ ->rgb*d, 130-2:

<http://farbe.li.tu-berlin.de/fel7/fel710na.txt/.ps>; only vector graphic VG;
see separate images of this page: <http://farbe.li.tu-berlin.de/fel7/fel7.htm>

A B C D E F G H I J K L M N O P Q R S T U V W X Y Z a b c d e f g h i j k l m n



fel70-7N, Dark HDR Image from Berliner Hochschule fuer Technik, Prof. Suesst; PS operators settransfer_3 colorImage

see similar files of the whole series: <http://farbe.li.tu-berlin.de/fels.htm>
technical information: <http://farbe.li.tu-berlin.de/A/33872E.html>
or <http://standards.iso.org/iso/9241/306/ed-2/index.html>

TUB registration: 20240301-fel7/fel710na.txt/.ps
application for evaluation and measurement of display or print output
TUB material: code=rh4ta

fel70-7N, Page 1/16, Test chart 2G with 40x27=1080 colours; digital equidistant 9 or 16 step colour scales; Colour data in column (A-n): $rgb^*_{d,130-0}$ (A_n), colorm = 1, xchart = 8, pchart = 0

TUB-test chart fel7; fel7: Test chart ul_d08 with 40x27=1080 colours; 1MR, DH 000n/w/cmy0/rgb
Digital equidistant 9 or 16 step colour scales, D-HDR; $\gamma_R=0,8$
-> $rgb^*_{d,130-0}$

http://farbe.li.tu-berlin.de/fel7/fel710fa.txt / .ps; only vector graphic VG;
see separate images of this page: http://farbe.li.tu-berlin.de/fel7/fel7.htm

TUB registration: 20240301-fel7/fel710fa.txt / .ps
application for evaluation and measurement of display or print output
TUB material: Code rhaTta

see similar files of the whole serie: http://farbe.li.tu-berlin.de/fels.htm
technical information: http://farbe.li.tu-berlin.de/A/33872E.html
or http://standards.iso.org/iso/9241/306/ed-2/index.html

Table with columns labeled A-Z and a-b and rows labeled 01-27. Each cell contains a numerical value representing color data for the fel7/fel710na.pdf test chart.

fel70_78, Page 2/16, Test chart G with 40x27=1080 colours; digital equivalent 9 or 16 step colour scales; Colour data in column (A-n): $rgb^*(A_j + k26, n27)$, $000n^*(k)$, $w^*(l)$, $nnn0^*(m)$, $www^*(n)$, $colorm = 1$, $xchart = 8$, $pchart = 1$

TUB-test chart fel7; fel7: Test chart ul_d08 with 40x27=1080 colours; 1MR, DH 000n/w/cmy0/rgb
Digital equivalent 9 or 16 step colour scales, D-HDR; $\gamma_R=0,8$
->rgb*d, 130:1

l=1381

<http://farbe.li.tu-berlin.de/fel7/fel710fa.txt> /.ps; only vector graphic VG;
see separate images of this page: <http://farbe.li.tu-berlin.de/fel7/fel7.htm>

see similar files of the whole serie: <http://farbe.li.tu-berlin.de/fels.htm>
technical information: <http://farbe.li.tu-berlin.de/A/33872E.htm>
or <http://standards.iso.org/iso/9241/306/ed-2/index.html>

TUB registration: 20240301-fel7/fel710fa.txt /.ps
application for evaluation and measurement of display or print output
TUB material: code=rh4ta

i	LAB*ref	l*out	LAB*out	LAB*out/c-ref	ΔE^*
1	5.69	0.0	5.69	0.0	0.01
2	11.67	0.0	9.36	-2.3	2.31
3	17.65	0.0	14.01	-3.63	3.64
4	23.63	0.0	19.12	-4.5	4.51
5	29.62	0.0	24.55	-5.06	5.07
6	35.6	0.0	30.23	-5.36	5.37
7	41.58	0.0	36.12	-5.45	5.46
8	47.56	0.0	42.19	-5.36	5.37
9	53.54	0.0	48.42	-5.11	5.12
10	59.52	0.0	54.79	-4.72	4.73
11	65.5	0.0	61.29	-4.2	4.21
12	71.48	0.0	67.91	-3.56	3.57
13	77.47	0.0	74.64	-2.82	2.83
14	83.45	0.0	81.47	-1.97	1.98
15	89.43	0.0	88.4	-1.02	1.03
16	95.41	0.0	95.41	0.0	0.01
17	5.69	0.0	5.69	0.0	0.01
18	28.12	0.0	23.17	-4.94	4.95
19	50.55	0.0	45.29	-5.25	5.26
20	72.98	0.0	69.58	-3.39	3.4
21	95.41	0.0	95.41	0.0	0.01

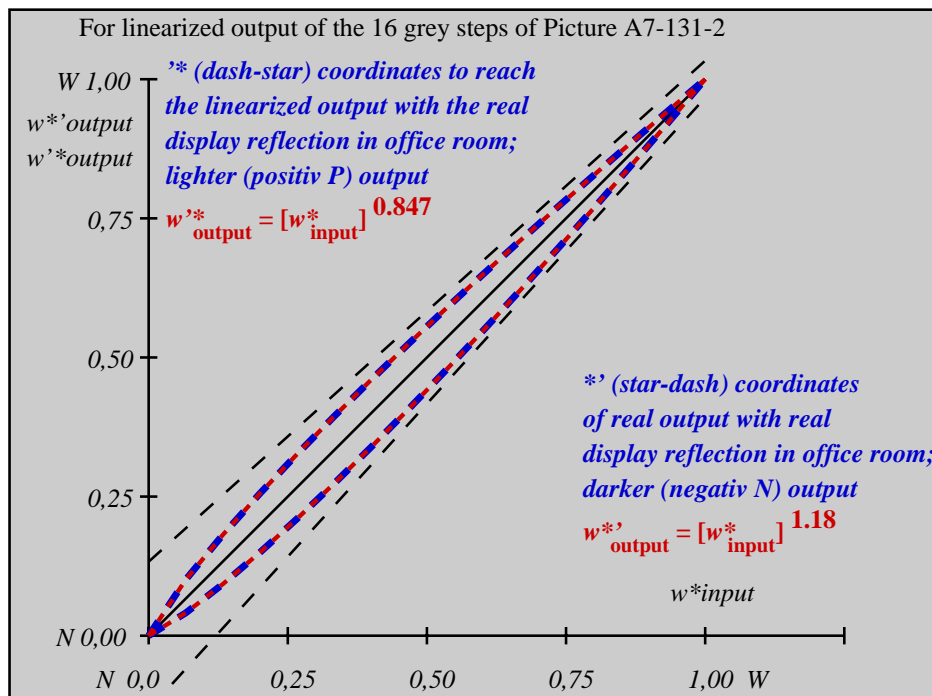
Start output S1
Specification according to ISO/IEC 15775 Annex G and DIN 33866-1 Annex G

Mean lightness difference (16 steps)
 $\Delta E^*_{CIELAB} = 3.4$

Mean lightness difference (5 steps)
 $\Delta L^*_{CIELAB} = 2.7$

Mean colour reproduction index: $R^*_{ab,m} = 85$

fel70-3N-131-2: File: Measure unknown; Device: Device unknown; Date: Date unknown



fel71-3N-131-2: File: Measure unknown; Device: Device unknown; Date: Date unknown

$L^*/Y^*_{intended}$ (absolute)	5.7/0.6	11.7/1.4	17.7/2.4	23.6/4.0	29.6/6.1	35.6/8.8	41.6/12.2	47.6/16.5	53.5/21.5	59.5/27.6	65.5/34.7	71.5/42.9	77.5/52.3	83.4/63.0	89.4/75.1	95.4/88.6
w^*_{setrgb}	00;F	01;E	02;D	03;C	04;B	05;A	06;9	07;8	08;7	09;6	10;5	11;4	12;3	13;2	14;1	15;0
$w^*_{CIELAB,r}$ (relative)	0,000	0,067	0,133	0,200	0,267	0,333	0,400	0,467	0,533	0,600	0,667	0,733	0,800	0,867	0,933	1,000
$w^*_{intended}$	0,000	0,067	0,133	0,200	0,267	0,333	0,400	0,467	0,533	0,600	0,667	0,733	0,800	0,867	0,933	1,000
w^*_{out}	0,0	0,054	0,113	0,176	0,24	0,305	0,371	0,439	0,506	0,576	0,645	0,715	0,786	0,857	0,928	1,0

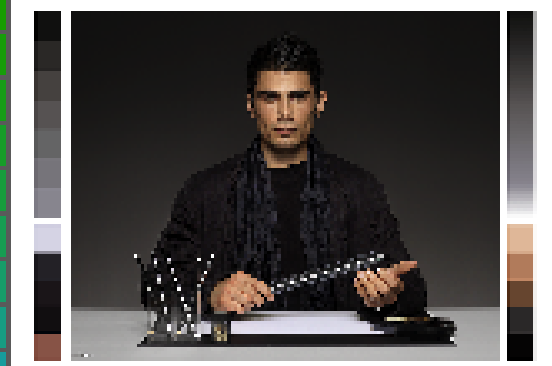
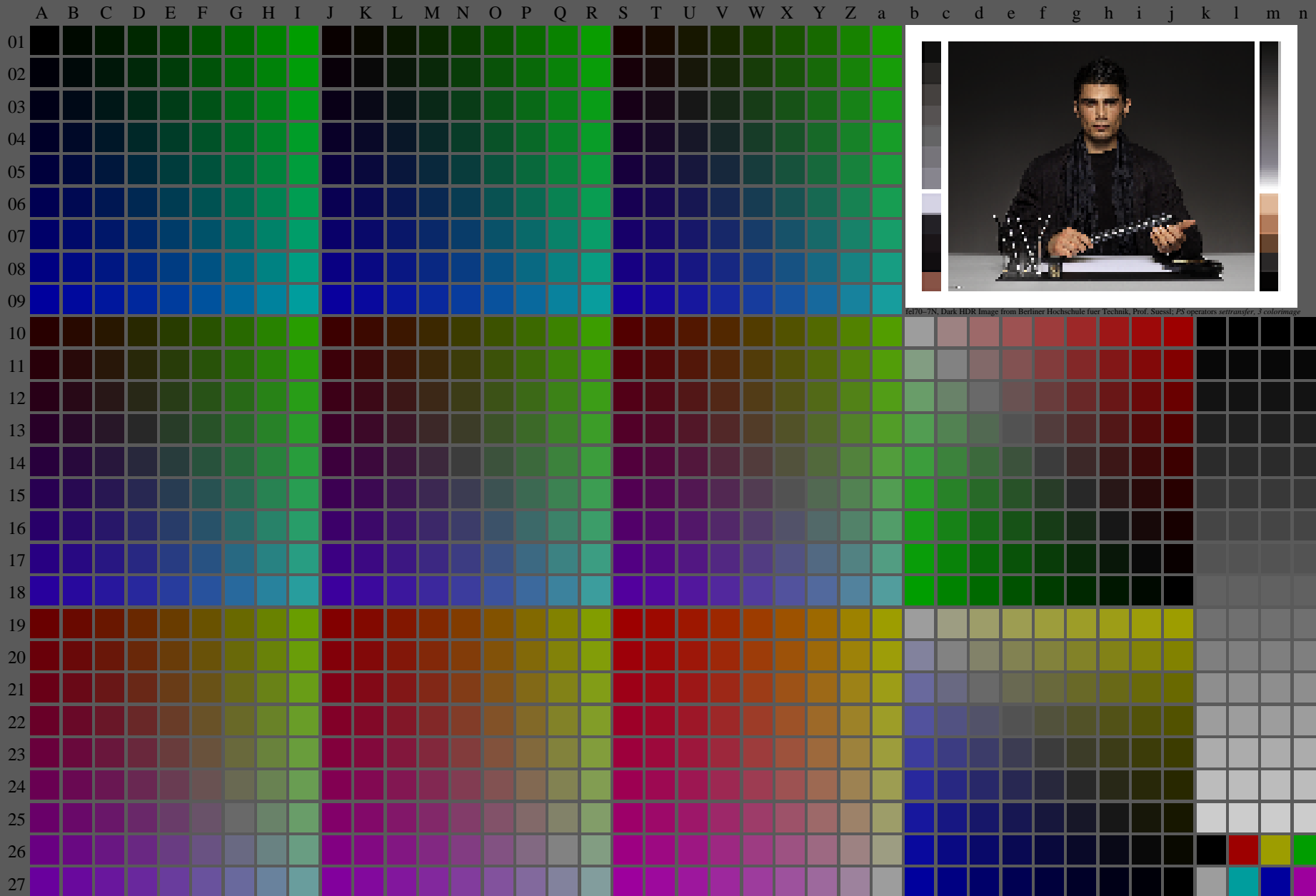
fel70-7N-131-2: 16 visual equidistant L^* -grey steps; PS operator: $w^*_{setrgbcolor}$

TUB-test chart fel7; fel7: In-output relation according to ISO 9241-306; 1MR, DH 000n/w/cmy0/rgb
Viewing Y contrast $Y_W:Y_N=88,9:0,62$; Y_N range 0,46 to <0,93, D-HDR; $\gamma_R=0,8 \rightarrow rgb^*_d, 130-2$

<http://farbe.li.tu-berlin.de/fel7/fel710fa.txt/.ps>; only vector graphic VG;
see separate images of this page: <http://farbe.li.tu-berlin.de/fel7/fel7.htm>

see similar files of the whole series: <http://farbe.li.tu-berlin.de/fel.htm>
technical information: <http://farbe.li.tu-berlin.de/A/33872E.html>
or <http://standards.iso.org/iso/9241/3M6/ed-2/index.html>

TUB registration: 20240301-fel7/fel710fa.txt/.ps
application for evaluation and measurement of display or print output
TUB material: code=rha4ta



fel70-7N, Dark HDR Image from Berliner Hochschule fuer Technik, Prof. Suesst; PS operators settransfer_3 colorImage

fel70-7N, Page 1/16, Test chart 2G with 40x27=1080 colours; digital equidistant 9 or 16 step colour scales; Colour data in column (A-n): rgb^* (A_n), colorm = 1, xchart = 16, pchart = 0

TUB-test chart fel7; fel7: Test chart ul_d08 with 40x27=1080 colours; 1MR, DH 000n/w/cmy0/rgb
Digital equidistant 9 or 16 step colour scales, D-HDR; $\gamma_R=0,8$
-> rgb^*_d , 130-0:

<http://farbe.li.tu-berlin.de/fel7/fel710fa.txt> /.ps; only vector graphic VG;
see separate images of this page: <http://farbe.li.tu-berlin.de/fel7/fel7.htm>

see similar files of the whole serie: <http://farbe.li.tu-berlin.de/fels.htm>
technical information: <http://farbe.li.tu-berlin.de/A/33872E.html>
or <http://standards.iso.org/iso/9241/306/ed-2/index.html>

TUB registration: 20240301-fel7/fel710fa.txt /.ps
application for evaluation and measurement of display or print output
TUB material: code=rh4ta

i	LAB*ref	l*out	LAB*out	LAB*out/c-ref	ΔE^*	Start output S1
1	10.99	0.0	0.0	10.99	0.0	0.0
2	16.62	0.0	0.03	13.12	0.0	-3.49
3	22.25	0.0	0.06	16.44	0.0	-5.8
4	27.88	0.0	0.11	20.45	0.0	-7.41
5	33.5	0.0	0.17	24.98	0.0	-8.51
6	39.13	0.0	0.22	29.94	0.0	-9.18
7	44.76	0.0	0.29	35.27	0.0	-9.48
8	50.39	0.0	0.35	40.93	0.0	-9.44
9	56.02	0.0	0.43	46.9	0.0	-9.11
10	61.64	0.0	0.5	53.13	0.0	-8.5
11	67.27	0.0	0.58	59.63	0.0	-7.63
12	72.9	0.0	0.66	66.36	0.0	-6.53
13	78.53	0.0	0.74	73.31	0.0	-5.2
14	84.15	0.0	0.82	80.48	0.0	-3.66
15	89.78	0.0	0.91	87.85	0.0	-1.92
16	95.41	0.0	1.0	95.41	0.0	0.0
17	10.99	0.0	0.0	10.99	0.0	0.0
18	32.1	0.0	0.15	23.81	0.0	-8.28
19	53.2	0.0	0.39	43.88	0.0	-9.31
20	74.31	0.0	0.68	68.08	0.0	-6.22
21	95.41	0.0	1.0	95.41	0.0	0.0

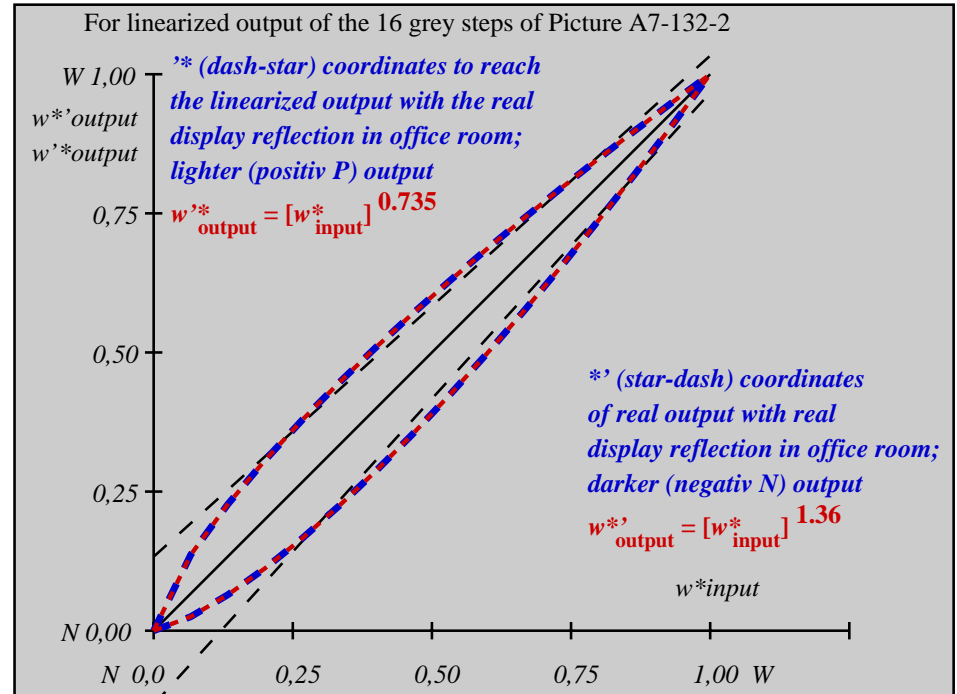
Specification according to ISO/IEC 15775 Annex G and DIN 33866-1 Annex G

Mean lightness difference (16 steps) $\Delta E^*_{CIELAB} = 6.0$

Mean lightness difference (5 steps) $\Delta L^*_{CIELAB} = 4.8$

Mean colour reproduction index: $R^*_{ab,m} = 74$

fel70-3N-132-2: File: Measure unknown; Device: Device unknown; Date: Date unknown



fel71-3N-132-2: File: Measure unknown; Device: Device unknown; Date: Date unknown

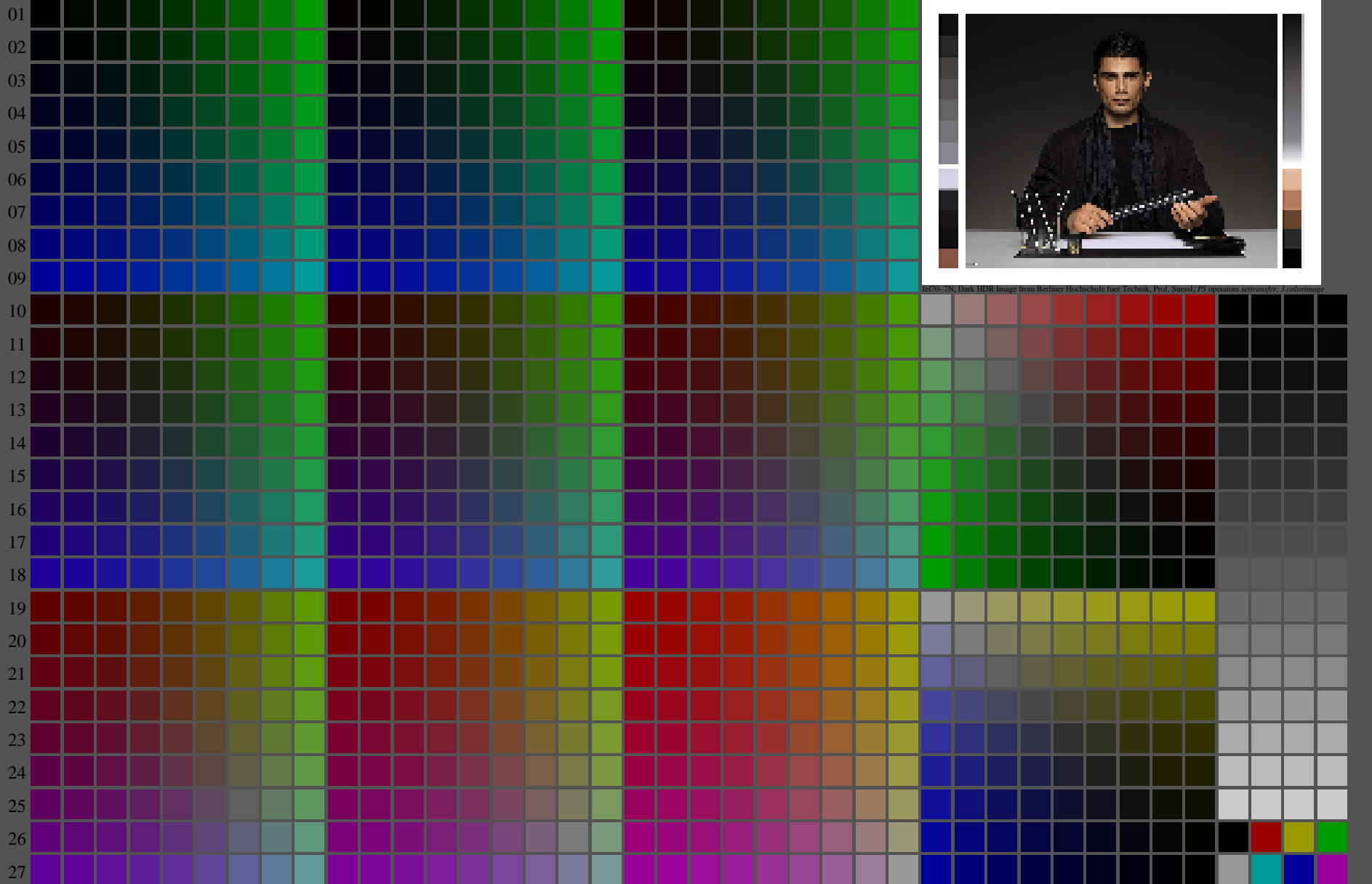
$L^*/Y_{intended}$ (absolute)	11.0/1.3	16.6/2.2	22.2/3.6	27.9/5.4	33.5/7.8	39.1/10.7	44.8/14.4	50.4/18.7	56.0/23.9	61.6/30.0	67.3/37.0	72.9/45.0	78.5/54.1	84.2/64.4	89.8/75.8	95.4/88.6
$w^* w^* w^*$ setrgb																
$g_N = 1.18$																
No. and Hex code	00;F	01;E	02;D	03;C	04;B	05;A	06;9	07;8	08;7	09;6	10;5	11;4	12;3	13;2	14;1	15;0
$w^* = l^*_{CIELAB, r}$ (relative)																
$w^*_{intended}$	0,000	0,067	0,133	0,200	0,267	0,333	0,400	0,467	0,533	0,600	0,667	0,733	0,800	0,867	0,933	1,000
w^*_{out}	0,0	0,042	0,093	0,151	0,211	0,274	0,34	0,408	0,477	0,548	0,621	0,694	0,769	0,845	0,922	1,0

fel70-7N-132-2: 16 visual equidistant L^* -grey steps; PS operator: $w^* w^* w^*$ setrgbcolor

TUB-test chart fel7; fel7: In-output relation according to ISO 9241-306; 1MR, DH 000n/w/cmy0/rgb
Viewing Y contrast $Y_W:Y_N=88,9:1,25$; Y_N range 0,93 to <1,87, D-HDR; $\gamma_R=0,8$ ->rgb*d, 130-2:

<http://farbe.li.tu-berlin.de/fel7/fel710fa.txt/.ps>; only vector graphic VG;
see separate images of this page: <http://farbe.li.tu-berlin.de/fel7/fel7.htm>

A B C D E F G H I J K L M N O P Q R S T U V W X Y Z a b c d e f g h i j k l m n



fel70-7N, Dark HDR Image from Berliner Hochschule fuer Technik, Prof. Suesst; PS operators settransfer_3 colorImage

see similar files of the whole series: <http://farbe.li.tu-berlin.de/fel.htm>
technical information: <http://farbe.li.tu-berlin.de/A/33872E.html>
or <http://standards.iso.org/iso/9241/5M6/ed-2/index.html>

TUB registration: 20240301-fel7/fel710fa.txt/.ps
application for evaluation and measurement of display or print output
TUB material: code=rh4ta

fel70-7N, Page 1/16, Test chart 2G with 40x27=1080 colours; digital equidistant 9 or 16 step colour scales; Colour data in column (A-n): rgb^* (A_n), colorm = 1, xchart = 24, pchart = 0

TUB-test chart fel7; fel7: Test chart ul_d08 with 40x27=1080 colours; 1MR, DH 000n/w/cmy0/rgb
Digital equidistant 9 or 16 step colour scales, D-HDR; $\gamma_R=0,8$
-> rgb^*_d , 130-0:

see similar files of the whole serie: <http://farbe.li.tu-berlin.de/fels.htm>
 technical information: <http://farbe.li.tu-berlin.de/A/33872E.html>
 or <http://standards.iso.org/iso/9241/306/ed-2/index.html>

TUB registration: 20240301-fel7/fel710fa.txt /.ps
 application for evaluation and measurement of display or print output
 TUB material: code=rh4ta

i	LAB*ref	l*out	LAB*out	LAB*out/c-ref	ΔE*	Start output S1
1	18.01	0.0	0.0	18.01	0.0	0.0
2	23.17	0.0	0.02	19.2	0.0	-3.95
3	28.33	0.0	0.04	21.49	0.0	-6.83
4	33.49	0.0	0.08	24.5	0.0	-8.98
5	38.65	0.0	0.13	28.12	0.0	-10.52
6	43.81	0.0	0.18	32.26	0.0	-11.53
7	48.97	0.0	0.24	36.89	0.0	-12.07
8	54.13	0.0	0.31	41.94	0.0	-12.18
9	59.29	0.0	0.38	47.41	0.0	-11.87
10	64.45	0.0	0.46	53.25	0.0	-11.19
11	69.61	0.0	0.54	59.46	0.0	-10.14
12	74.77	0.0	0.62	66.02	0.0	-8.74
13	79.93	0.0	0.71	72.9	0.0	-7.02
14	85.09	0.0	0.8	80.1	0.0	-4.98
15	90.25	0.0	0.9	87.61	0.0	-2.63
16	95.41	0.0	1.0	95.41	0.0	0.0
17	18.01	0.0	0.0	18.01	0.0	0.0
18	37.36	0.0	0.12	27.16	0.0	-10.19
19	56.71	0.0	0.34	44.63	0.0	-12.07
20	76.06	0.0	0.64	67.71	0.0	-8.34
21	95.41	0.0	1.0	95.41	0.0	0.0

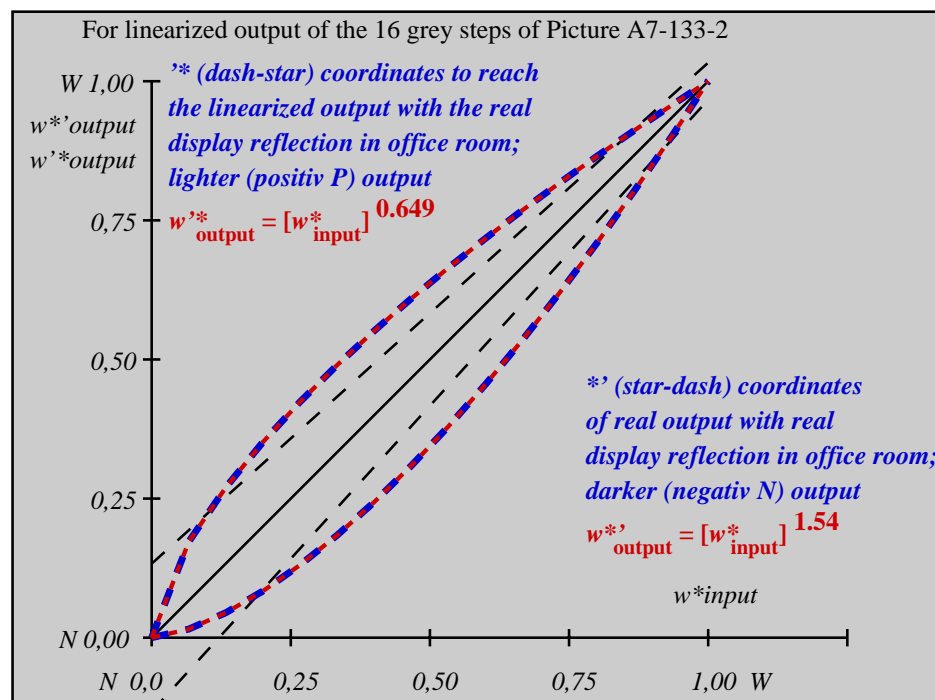
Specification according to ISO/IEC 15775 Annex G and DIN 33866-1 Annex G

Mean lightness difference (16 steps) $\Delta E^*_{CIELAB} = 7.7$

Mean lightness difference (5 steps) $\Delta L^*_{CIELAB} = 6.1$

Mean colour reproduction index: $R^*_{ab,m} = 66$

fel70-3N-133-2: File: Measure unknown; Device: Device unknown; Date: Date unknown



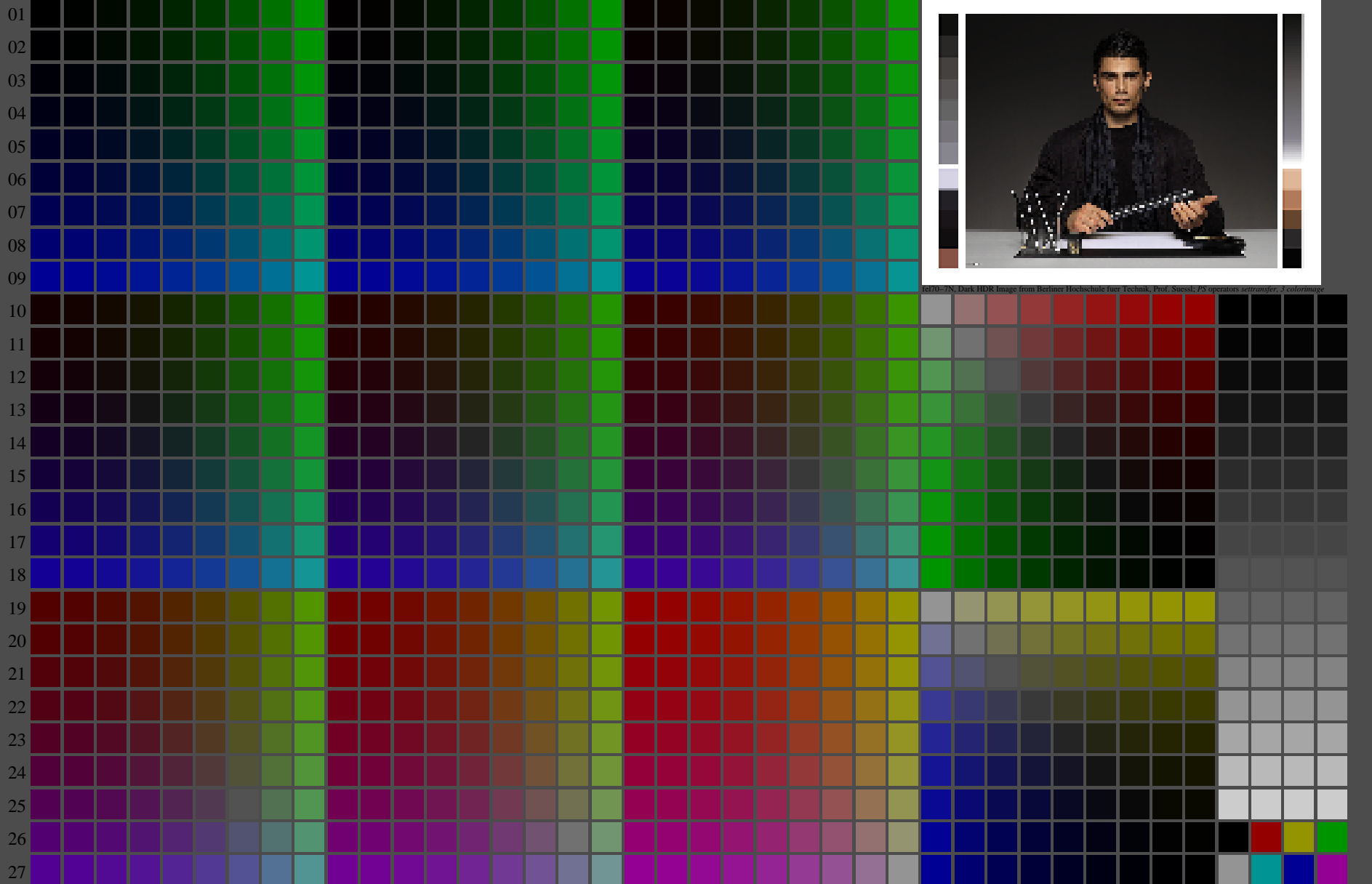
fel71-3N-133-2: File: Measure unknown; Device: Device unknown; Date: Date unknown

$L^*/Y^*_{intended}$ (absolute)	18.0/2.5	23.2/3.8	28.3/5.6	33.5/7.8	38.6/10.5	43.8/13.7	49.0/17.6	54.1/22.1	59.3/27.3	64.4/33.4	69.6/40.2	74.8/47.9	79.9/56.6	85.1/66.2	90.2/76.8	95.4/88.6
$w^* w^* w^*$ setrgb																
$g_N = 1.29$																
No. and Hex code	00;F	01;E	02;D	03;C	04;B	05;A	06;9	07;8	08;7	09;6	10;5	11;4	12;3	13;2	14;1	15;0
$w^* = l^*_{CIELAB, r}$ (relative)																
$w^*_{intended}$	0,000	0,067	0,133	0,200	0,267	0,333	0,400	0,467	0,533	0,600	0,667	0,733	0,800	0,867	0,933	1,000
w^*_{out}	0,0	0,031	0,074	0,125	0,182	0,242	0,307	0,374	0,444	0,517	0,593	0,67	0,75	0,832	0,914	1,0

fel70-7N-133-2: 16 visual equidistant L^* -grey steps; PS operator: $w^* w^* w^*$ setrgbcolor

<http://farbe.li.tu-berlin.de/fel7/fel710fa.txt/.ps>; only vector graphic VG;
see separate images of this page: <http://farbe.li.tu-berlin.de/fel7/fel7.htm>

A B C D E F G H I J K L M N O P Q R S T U V W X Y Z a b c d e f g h i j k l m n



fel70-7N, Dark HDR Image from Berliner Hochschule fuer Technik, Prof. Suesst; PS operators settransfer_3 colorImage

see similar files of the whole serie: <http://farbe.li.tu-berlin.de/fel7.htm>
technical information: <http://farbe.li.tu-berlin.de/AV/33872E.html>
or <http://standards.iso.org/iso/9241/5M6/ed-2/index.html>

TUB registration: 20240301-fel7/fel710fa.txt/.ps
application for evaluation and measurement of display or print output
TUB material: code=rh4ta

fel70-7N, Page 1/16, Test chart 2G with 40x27=1080 colours; digital equidistant 9 or 16 step colour scales; Colour data in column (A-n): rgb^* (A_n), colorm = 1, xchart = 32, pchart = 0

TUB-test chart fel7; fel7: Test chart ul_d08 with 40x27=1080 colours; 1MR, DH 000n/w/cmy0/rgb
Digital equidistant 9 or 16 step colour scales, D-HDR; $\gamma_R=0,8$
-> rgb^*_d , 130-0:

http://farbe.li.tu-berlin.de/fel7/fel7f30a.txt /ps; only vector graphic VG;
see separate images of this page: http://farbe.li.tu-berlin.de/fel7/fel7.htm

see similar files of the whole serie: http://farbe.li.tu-berlin.de/fels.htm
technical information: http://farbe.li.tu-berlin.de/A/33872E.html
or http://standards.iso.org/iso/9241/306/ed-2/index.html

TUB registration: 20240301-fel7/fel7f30a.txt /ps
application for evaluation and measurement of display or print output
TUB material: code rha1ra

Table with 27 rows and 100 columns. Columns are labeled A-Z, a-z. Rows are labeled 01-27. Each cell contains a numerical value representing color data for a specific grid point.

fel70-70, Page 2/16, Test chart G with 40x27=1080 colours; digital equidistant 9 or 16 step colour scales; Colour data in column (A-n): r_gb*(A_j+k26_n27), 000n*(k), w*(l), nnn0*(m), www*(n), colors = 1, xchart = 32, pchart = 1

TUB-test chart fel7; fel7: Test chart ul_d08 with 40x27=1080 colours; 1MR, DH 000n/w/cmy0/rgb
Digital equidistant 9 or 16 step colour scales, D-HDR; γ_R=0,8
->rgb*d, 130:1

see similar files of the whole serie: <http://farbe.li.tu-berlin.de/fels.htm>
 technical information: <http://farbe.li.tu-berlin.de/A/33872E.html>
 or <http://standards.iso.org/iso/9241/306/ed-2/index.html>

TUB registration: 20240301-fel7/fel710fa.txt /.ps
 application for evaluation and measurement of display or print output
 TUB material: code=rh4ta

i	LAB*ref	l*out	LAB*out	LAB*out/c-ref	ΔE^*
1	26.85	0.0	0.0	26.85	0.0
2	31.42	0.0	0.01	27.5	0.0
3	35.99	0.0	0.03	28.99	0.0
4	40.56	0.0	0.06	31.15	0.0
5	45.13	0.0	0.1	33.91	0.0
6	49.7	0.0	0.15	37.21	0.0
7	54.27	0.0	0.21	41.03	0.0
8	58.84	0.0	0.27	45.33	0.0
9	63.41	0.0	0.34	50.1	0.0
10	67.99	0.0	0.42	55.33	0.0
11	72.56	0.0	0.5	60.98	0.0
12	77.13	0.0	0.59	67.06	0.0
13	81.7	0.0	0.68	73.56	0.0
14	86.27	0.0	0.78	80.45	0.0
15	90.84	0.0	0.89	87.74	0.0
16	95.41	0.0	1.0	95.41	0.0
17	26.85	0.0	0.0	26.85	0.0
18	43.99	0.0	0.09	33.17	0.0
19	61.13	0.0	0.3	47.66	0.0
20	78.27	0.0	0.61	68.65	0.0
21	95.41	0.0	1.0	95.41	0.0

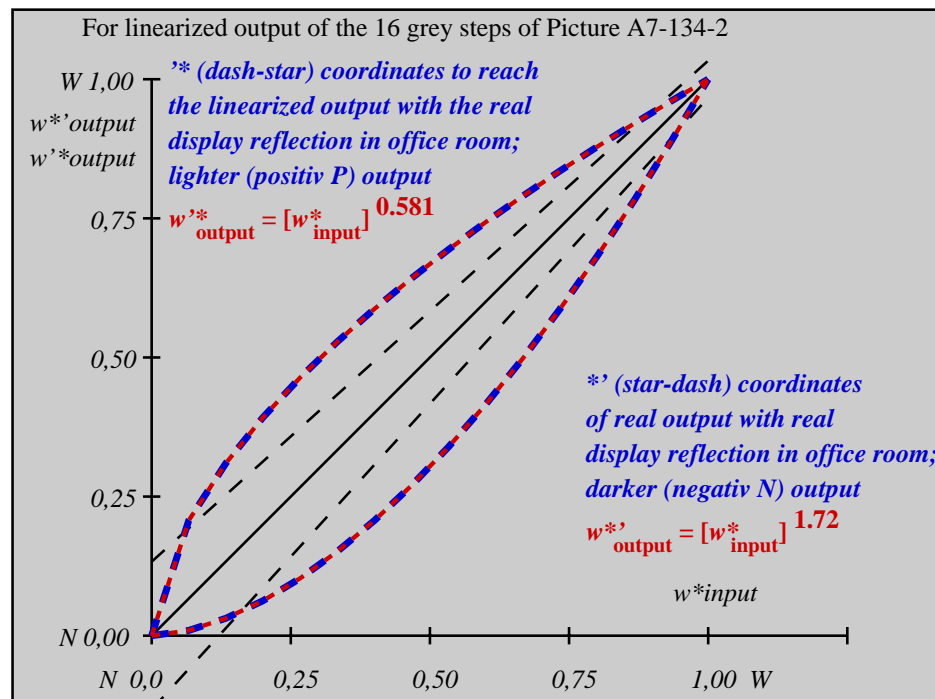
Start output S1
Specification according to ISO/IEC 15775 Annex G and DIN 33866-1 Annex G

Mean lightness difference (16 steps)
 $\Delta E^*_{CIELAB} = 8.5$

Mean lightness difference (5 steps)
 $\Delta L^*_{CIELAB} = 6.8$

Mean colour reproduction index: $R^*_{ab,m} = 63$

fel70-3N-134-2: File: Measure unknown; Device: Device unknown; Date: Date unknown



fel71-3N-134-2: File: Measure unknown; Device: Device unknown; Date: Date unknown

$L^*/Y^*_{intended}$ (absolute)	26.8/5.0	31.4/6.8	36.0/9.0	40.6/11.6	45.1/14.6	49.7/18.2	54.3/22.2	58.8/26.9	63.4/32.1	68.0/38.0	72.6/44.5	77.1/51.7	81.7/59.7	86.3/68.5	90.8/78.1	95.4/88.6
$w^* w^* w^*$ setrgb	[Visual representation of 16 grey steps]															
$g_N = 1.43$	[Visual representation of 16 grey steps]															
No. and Hex code	00;F	01;E	02;D	03;C	04;B	05;A	06;9	07;8	08;7	09;6	10;5	11;4	12;3	13;2	14;1	15;0
$w^* = l^*_{CIELAB, r}$ (relative)	[Visual representation of 16 grey steps]															
$w^*_{intended}$	0,000	0,067	0,133	0,200	0,267	0,333	0,400	0,467	0,533	0,600	0,667	0,733	0,800	0,867	0,933	1,000
w^*_{out}	0,0	0,021	0,056	0,1	0,152	0,208	0,27	0,337	0,407	0,482	0,561	0,642	0,727	0,816	0,906	1,0

fel70-7N-134-2: 16 visual equidistant L^* -grey steps; PS operator: $w^* w^* w^*_{setrgbcolor}$

TUB-test chart fel7; fel7: In-output relation according to ISO 9241-306; 1MR, DH 000n/w/cmy0/rgb
 Viewing Y contrast $Y_W:Y_N=88,9:5$; Y_N range 3,75 to <7,5, D-HDR; $\gamma_R=0,8$ ->rgb*d, 130-2:

<http://farbe.li.tu-berlin.de/fel7/fel710fa.txt/.ps>; only vector graphic VG;
see separate images of this page: <http://farbe.li.tu-berlin.de/fel7/fel7.htm>

A B C D E F G H I J K L M N O P Q R S T U V W X Y Z a b c d e f g h i j k l m n

see similar files of the whole serie: <http://farbe.li.tu-berlin.de/fels.htm>
technical information: <http://farbe.li.tu-berlin.de/A/33872E.html>
or <http://standards.iso.org/iso/9241/506/ed-2/index.html>

TUB registration: 20240301-fel7/fel710fa.txt/.ps
application for evaluation and measurement of display or print output
TUB material: code=rh4ta



fel70-7N, Dark HDR Image from Berliner Hochschule fuer Technik, Prof. Suesst, PS operators settransfer, 3 colorimage

fel70-7N, Page 1/16, Test chart 2G with 40x27=1080 colours; digital equidistant 9 or 16 step colour scales; Colour data in column (A-n): rgb^* (A_n), colorm = 1, xchart = 40, pchart = 0

TUB-test chart fel7; fel7: Test chart ul_d08 with 40x27=1080 colours; 1MR, DH 000n/w/cmy0/rgb
Digital equidistant 9 or 16 step colour scales, D-HDR; $\gamma_R=0,8$
-> rgb^*_d , 130-0:

see similar files of the whole serie: <http://farbe.li.tu-berlin.de/fels.htm>
 technical information: <http://farbe.li.tu-berlin.de/A/33872E.html>
 or <http://standards.iso.org/iso/9241/306/ed-2/index.html>

TUB registration: 20240301-fel7/fel710fa.txt /.ps
 application for evaluation and measurement of display or print output
 TUB material: code=rh4ta

i	LAB*ref	l*out	LAB*out	LAB*out/c-ref	ΔE^*
1	37.99	0.0	0.0	37.99	0.0
2	41.81	0.0	0.01	38.32	0.0
3	45.64	0.0	0.02	39.23	0.0
4	49.47	0.0	0.05	40.68	0.0
5	53.3	0.0	0.08	42.65	0.0
6	57.13	0.0	0.12	45.11	0.0
7	60.96	0.0	0.18	48.06	0.0
8	64.78	0.0	0.24	51.48	0.0
9	68.61	0.0	0.3	55.38	0.0
10	72.44	0.0	0.38	59.74	0.0
11	76.27	0.0	0.46	64.56	0.0
12	80.1	0.0	0.55	69.84	0.0
13	83.93	0.0	0.65	75.57	0.0
14	87.75	0.0	0.76	81.74	0.0
15	91.58	0.0	0.88	88.35	0.0
16	95.41	0.0	1.0	95.41	0.0
17	37.99	0.0	0.0	37.99	0.0
18	52.34	0.0	0.07	42.11	0.0
19	66.7	0.0	0.27	53.37	0.0
20	81.05	0.0	0.58	71.23	0.0
21	95.41	0.0	1.0	95.41	0.0

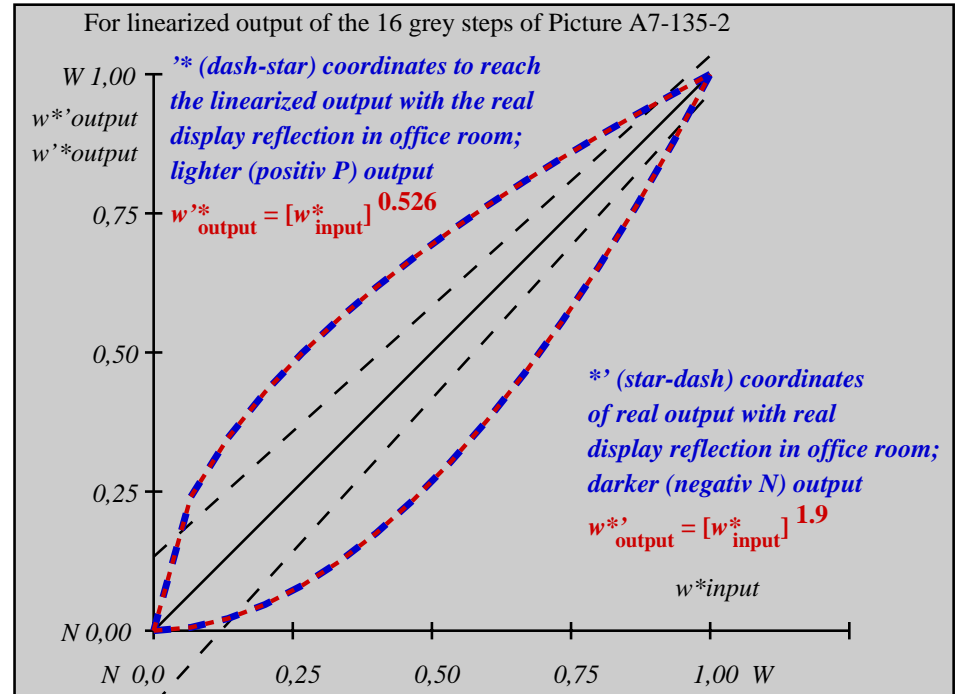
Start output S1
Specification according to ISO/IEC 15775 Annex G and DIN 33866-1 Annex G

Mean lightness difference (16 steps)
 $\Delta E^*_{CIELAB} = 8.3$

Mean lightness difference (5 steps)
 $\Delta L^*_{CIELAB} = 6.7$

Mean colour reproduction index: $R^*_{ab,m} = 64$

fel70-3N-135-2: File: Measure unknown; Device: Device unknown; Date: Date unknown



fel71-3N-135-2: File: Measure unknown; Device: Device unknown; Date: Date unknown

$L^*/Y^*_{intended}$ (absolute)	38.0/10.1	41.8/12.4	45.6/15.0	49.5/18.0	53.3/21.3	57.1/25.1	61.0/29.2	64.8/33.8	68.6/38.8	72.4/44.3	76.3/50.3	80.1/56.9	83.9/63.9	87.8/71.6	91.6/79.8	95.4/88.6
$w^* w^* w^*$ setrgb																
$g_N=1.6$																
No. and Hex code	00;F	01;E	02;D	03;C	04;B	05;A	06;9	07;8	08;7	09;6	10;5	11;4	12;3	13;2	14;1	15;0
$w^* = l^*_{CIELAB, r}$ (relative)																
$w^*_{intended}$	0,000	0,067	0,133	0,200	0,267	0,333	0,400	0,467	0,533	0,600	0,667	0,733	0,800	0,867	0,933	1,000
w^*_{out}	0,0	0,013	0,04	0,076	0,121	0,172	0,231	0,296	0,365	0,442	0,523	0,608	0,7	0,796	0,895	1,0

fel70-7N-135-2: 16 visual equidistant L^* -grey steps; PS operator: $w^* w^* w^*$ setrgbcolor

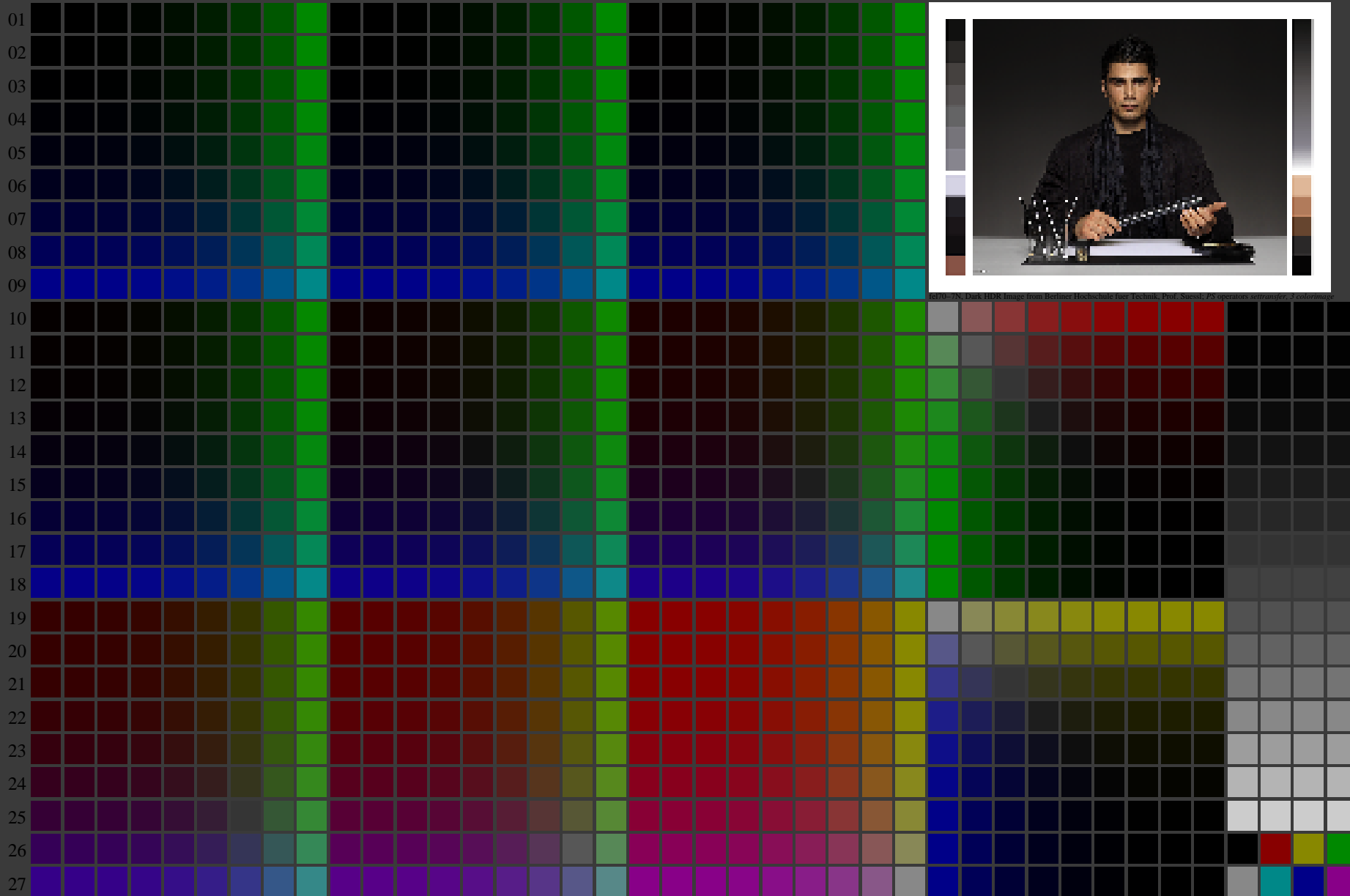
TUB-test chart fel7; fel7: In-output relation according to ISO 9241-306; 1MR, DH 000n/w/cmy0/rgb
 Viewing Y contrast $Y_W:Y_N=88,9:10$; Y_N range 7,5 to <15, D-HDR; $\gamma_R=0,8$ ->rgb*d, 130-2:

<http://farbe.li.tu-berlin.de/fel7/fel710fa.txt/.ps>; only vector graphic VG;
see separate images of this page: <http://farbe.li.tu-berlin.de/fel7/fel7.htm>

see similar files of the whole serie: <http://farbe.li.tu-berlin.de/fels.htm>
technical information: <http://farbe.li.tu-berlin.de/A/33872E.html>
or <http://standards.iso.org/iso/9241/306/ed-2/index.html>

TUB registration: 20240301-fel7/fel710fa.txt/.ps
application for evaluation and measurement of display or print output
TUB material: code=rh4ta

A B C D E F G H I J K L M N O P Q R S T U V W X Y Z a b c d e f g h i j k l m n



fel70-7N, Dark HDR Image from Berliner Hochschule fuer Technik, Prof. Süssel, PS operators settransfer, 3 colorimage

fel70-7N, Page 1/16, Test chart 2G with 40x27=1080 colours; digital equidistant 9 or 16 step colour scales; Colour data in column (A-n): rgb^* (A_n), colorm = 1, xchart = 48, pchart = 0

TUB-test chart fel7; fel7: Test chart ul_d08 with 40x27=1080 colours; 1MR, DH 000n/w/cmy0/rgb
Digital equidistant 9 or 16 step colour scales, D-HDR; $\gamma_R=0,8$
-> rgb^*_d , 130-0:

see similar files of the whole serie: <http://farbe.li.tu-berlin.de/fels.htm>
technical information: <http://farbe.li.tu-berlin.de/A/33872E.html>
or <http://standards.iso.org/iso/9241/306/ed-2/index.html>

TUB registration: 20240301-fel7/fel710fa.txt /.ps
application for evaluation and measurement of display or print output
TUB material: code=rh4ta

i	LAB*ref	l*out	LAB*out	LAB*out/c-ref	ΔE^*
1	52.02	0.0	0.0	52.02	0.0
2	54.91	0.0	0.0	52.17	0.0
3	57.8	0.0	0.02	52.67	0.0
4	60.7	0.0	0.04	53.54	0.0
5	63.59	0.0	0.06	54.79	0.0
6	66.48	0.0	0.1	56.43	0.0
7	69.37	0.0	0.15	58.47	0.0
8	72.27	0.0	0.2	60.91	0.0
9	75.16	0.0	0.27	63.75	0.0
10	78.05	0.0	0.35	67.01	0.0
11	80.95	0.0	0.43	70.69	0.0
12	83.84	0.0	0.52	74.78	0.0
13	86.73	0.0	0.63	79.3	0.0
14	89.62	0.0	0.74	84.24	0.0
15	92.52	0.0	0.87	89.61	0.0
16	95.41	0.0	1.0	95.41	0.0
17	52.02	0.0	0.0	52.02	0.0
18	62.87	0.0	0.06	54.44	0.0
19	73.71	0.0	0.24	62.28	0.0
20	84.56	0.0	0.55	75.87	0.0
21	95.41	0.0	1.0	95.41	0.0

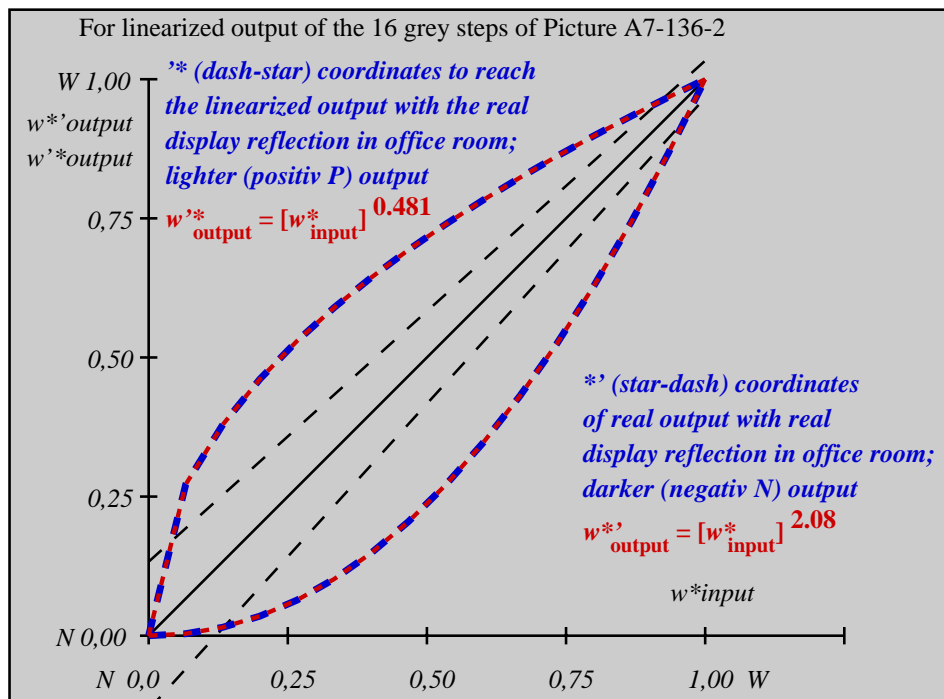
Start output S1
Specification according to ISO/IEC 15775 Annex G and DIN 33866-1 Annex G

Mean lightness difference (16 steps)
 $\Delta E^*_{CIELAB} = 7.1$

Mean lightness difference (5 steps)
 $\Delta L^*_{CIELAB} = 5.7$

Mean colour reproduction index: $R^*_{ab,m} = 69$

fel70-3N-136-2: File: Measure unknown; Device: Device unknown; Date: Date unknown



fel71-3N-136-2: File: Measure unknown; Device: Device unknown; Date: Date unknown

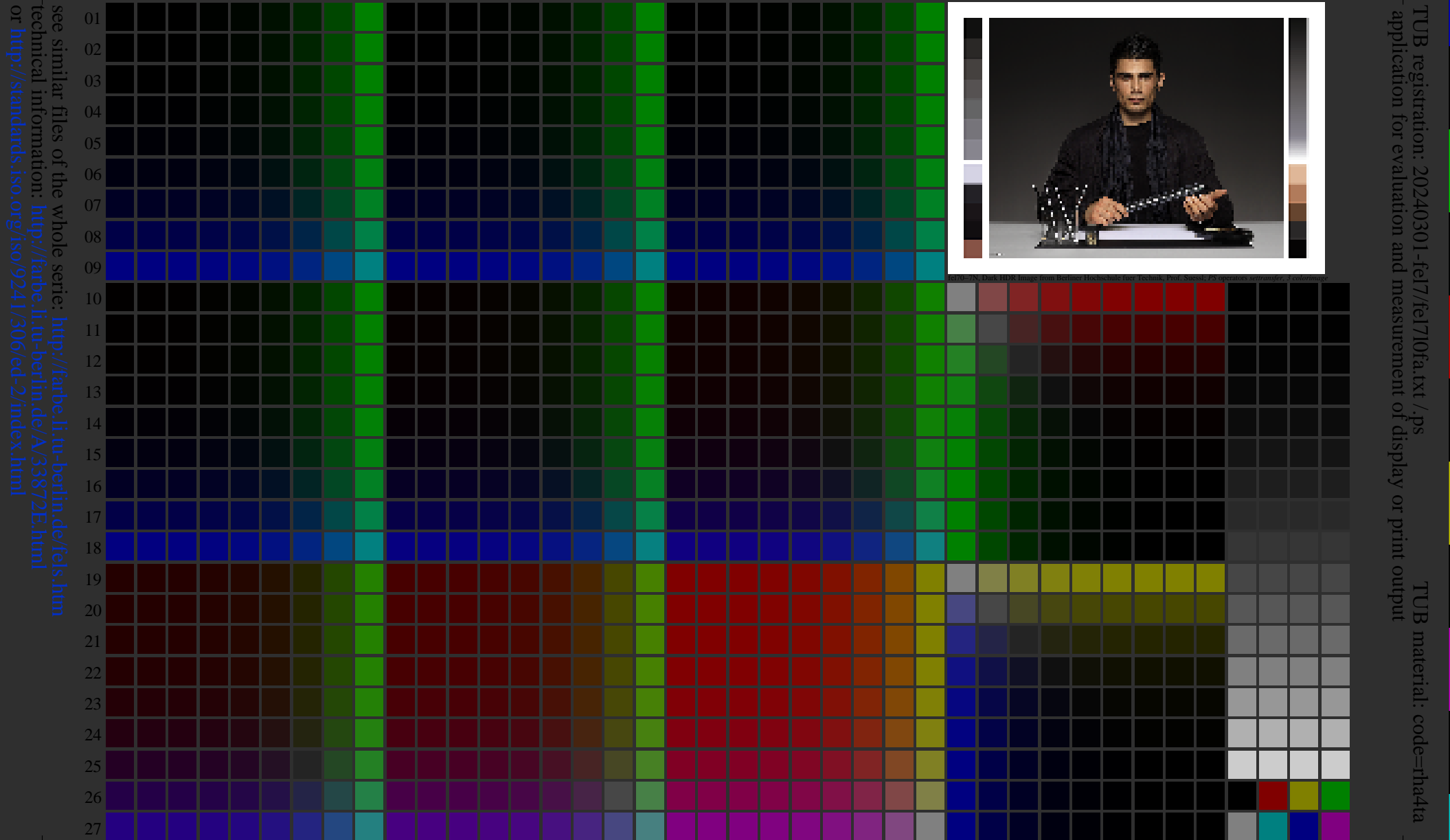
$L^*/Y^*_{intended}$ (absolute)	52.0/20.2	54.9/22.8	57.8/25.8	60.7/28.9	63.6/32.3	66.5/36.0	69.4/39.9	72.3/44.1	75.2/48.5	78.1/53.3	80.9/58.4	83.8/63.8	86.7/69.5	89.6/75.5	92.5/81.9	95.4/88.6
$w^* w^* w^*$ setrgb	[Visual representation of 16 grey steps]															
$g_N=1.82$ No. and Hex code	00;F	01;E	02;D	03;C	04;B	05;A	06;9	07;8	08;7	09;6	10;5	11;4	12;3	13;2	14;1	15;0
$w^* = l^*_{CIELAB, r}$ (relative)	[Visual representation of 16 grey steps]															
$w^*_{intended}$	0,000	0,067	0,133	0,200	0,267	0,333	0,400	0,467	0,533	0,600	0,667	0,733	0,800	0,867	0,933	1,000
w^*_{out}	0,0	0,007	0,026	0,054	0,091	0,135	0,189	0,25	0,319	0,395	0,479	0,569	0,666	0,771	0,882	1,0

fel70-7N-136-2: 16 visual equidistant L^* -grey steps; PS operator: $w^* w^* w^*$ setrgbcolor

TUB-test chart fel7; fel7: In-output relation according to ISO 9241-306; 1MR, DH 000n/w/cmy0/rgb
Viewing Y contrast $Y_W:Y_N=88,9:20$; Y_N range 15 to <30, D-HDR; $\gamma_R=0,8$ ->rgb*d, 130-2:

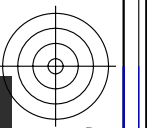
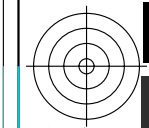
<http://farbe.li.tu-berlin.de/fel7/fel710fa.txt> /.ps; only vector graphic VG;
see separate images of this page: <http://farbe.li.tu-berlin.de/fel7/fel7.him>

A B C D E F G H I J K L M N O P Q R S T U V W X Y Z a b c d e f g h i j k l m n



fel70-7N, Page 1/16, Test chart 2G with 40x27=1080 colours; digital equidistant 9 or 16 step colour scales; Colour data in column (A-n): $rgb^* \cdot (A_n)$, colorm = 1, xchart = 56, pchart = 0

TUB-test chart fel7; fel7: Test chart ul_d08 with 40x27=1080 colours; 1MR, DH 000n/w/cmy0/rgb
Digital equidistant 9 or 16 step colour scales, D-HDR; $\gamma_R=0.8$
-> $rgb^*_d, 130-0$



see similar files of the whole serie: <http://farbe.li-tu-berlin.de/fels.htm>
technical information: <http://farbe.li-tu-berlin.de/A/33872E.html>
or <http://standards.iso.org/iso/9241/306/ed-2/index.html>

TUB registration: 20240301-fel7/fel710fa.txt /ps
application for evaluation and measurement of display or print output
TUB material: code rha1ta

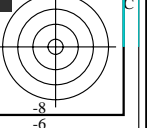
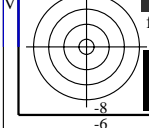


Table with 100 columns (A-Z) and 100 rows (0-9). Each cell contains a numerical value representing color data for a specific color and step combination.

fel70_78, Page 2/16, Test chart G with 40x27=1080 colours; digital equivalent 9 or 16 step colour scales; Colour data in column (A-n): $rgb^*(A_j + k26_n27)$, $000n^*(k)$, $w^*(l)$, $nnn0^*(m)$, $www^*(n)$, $colorm = 1$, $xchart = 56$, $pchart = 1$
TUB-test chart fel7; fel7: Test chart usl_d08 with 40x27=1080 colours; 1MR, DH 000n/w/cmy0/rgb
Digital equivalent 9 or 16 step colour scales, D-HDR; $\gamma_R=0,8$
->rgb*d, 130:1

see similar files of the whole serie: <http://farbe.li.tu-berlin.de/fels.htm>
technical information: <http://farbe.li.tu-berlin.de/A/33872E.html>
or <http://standards.iso.org/iso/9241/306/ed-2/index.html>

TUB registration: 20240301-fel7/fel710fa.txt /.ps
application for evaluation and measurement of display or print output
TUB material: code=rh4ta

i	LAB*ref	l*out	LAB*out	LAB*out/c-ref	ΔE^*
1	69.7	0.0	69.7	0.0	0.01
2	71.41	0.0	69.75	-1.65	1.66
3	73.13	0.0	69.97	-3.15	3.16
4	74.84	0.0	70.37	-4.46	4.47
5	76.55	0.0	70.99	-5.55	5.56
6	78.27	0.0	71.84	-6.41	6.42
7	79.98	0.0	72.94	-7.03	7.04
8	81.7	0.0	74.29	-7.4	7.41
9	83.41	0.0	75.91	-7.49	7.5
10	85.12	0.0	77.8	-7.31	7.32
11	86.84	0.0	79.98	-6.85	6.86
12	88.55	0.0	82.45	-6.09	6.1
13	90.27	0.0	85.23	-5.03	5.04
14	91.98	0.0	88.3	-3.67	3.68
15	93.7	0.0	91.7	-1.99	2.0
16	95.41	0.0	95.41	0.0	0.01
17	69.7	0.0	69.7	0.0	0.01
18	76.13	0.0	70.82	-5.3	5.31
19	82.55	0.0	75.07	-7.48	7.49
20	88.98	0.0	83.12	-5.85	5.86
21	95.41	0.0	95.41	0.0	0.01

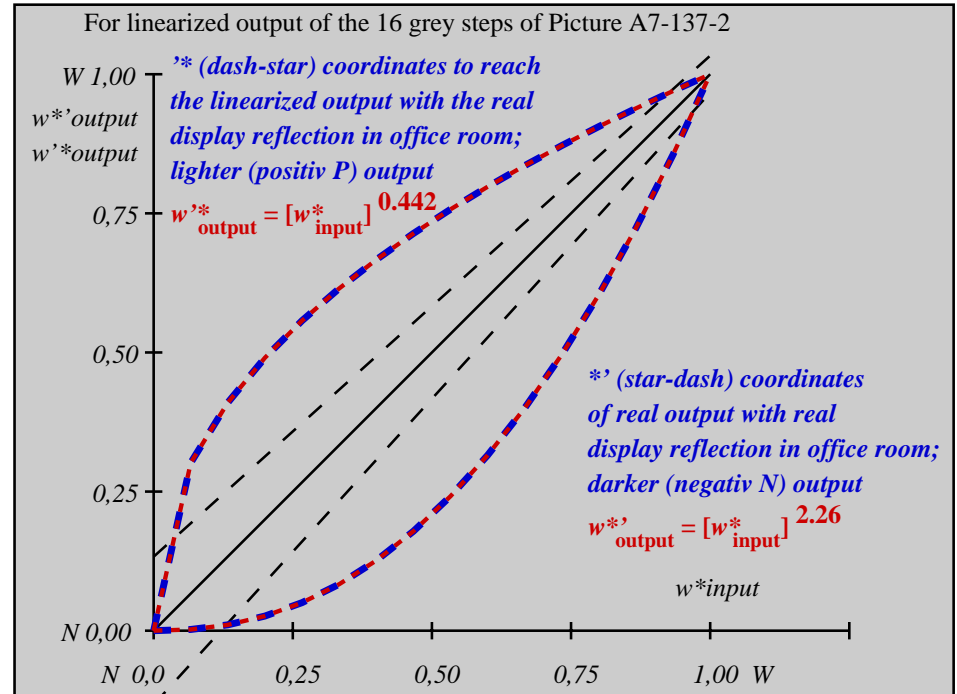
Start output S1
Specification according to ISO/IEC 15775 Annex G and DIN 33866-1 Annex G

Mean lightness difference (16 steps)
 $\Delta E^*_{CIELAB} = 4.6$

Mean lightness difference (5 steps)
 $\Delta L^*_{CIELAB} = 3.7$

Mean colour reproduction index: $R^*_{ab,m} = 80$

fel70-3N-137-2: File: Measure unknown; Device: Device unknown; Date: Date unknown



fel71-3N-137-2: File: Measure unknown; Device: Device unknown; Date: Date unknown

$L^*/Y^*_{intended}$ (absolute)	69.7/40.3	71.4/42.8	73.1/45.4	74.8/48.0	76.6/50.8	78.3/53.7	80.0/56.6	81.7/59.7	83.4/62.9	85.1/66.3	86.8/69.7	88.6/73.2	90.3/76.9	92.0/80.7	93.7/84.6	95.4/88.6
$w^* w^* w^*$ setrgb																
$g_N=2.11$																
No. and Hex code	00;F	01;E	02;D	03;C	04;B	05;A	06;9	07;8	08;7	09;6	10;5	11;4	12;3	13;2	14;1	15;0
$w^* = l^*_{CIELAB, r}$ (relative)																
$w^*_{intended}$	0,000	0,067	0,133	0,200	0,267	0,333	0,400	0,467	0,533	0,600	0,667	0,733	0,800	0,867	0,933	1,000
w^*_{out}	0,0	0,003	0,014	0,034	0,062	0,099	0,145	0,201	0,266	0,341	0,426	0,52	0,625	0,74	0,864	1,0

fel70-7N-137-2: 16 visual equidistant L^* -grey steps; PS operator: $w^* w^* w^*$ setrgbcolor

TUB-test chart fel7; fel7: In-output relation according to ISO 9241-306; 1MR, DH 000n/w/cmy0/rgb
Viewing Y contrast $Y_W:Y_N=88,9:40$; Y_N range 30 to <60, D-HDR; $\gamma_R=0,8$ ->rgb*d, 130-2: