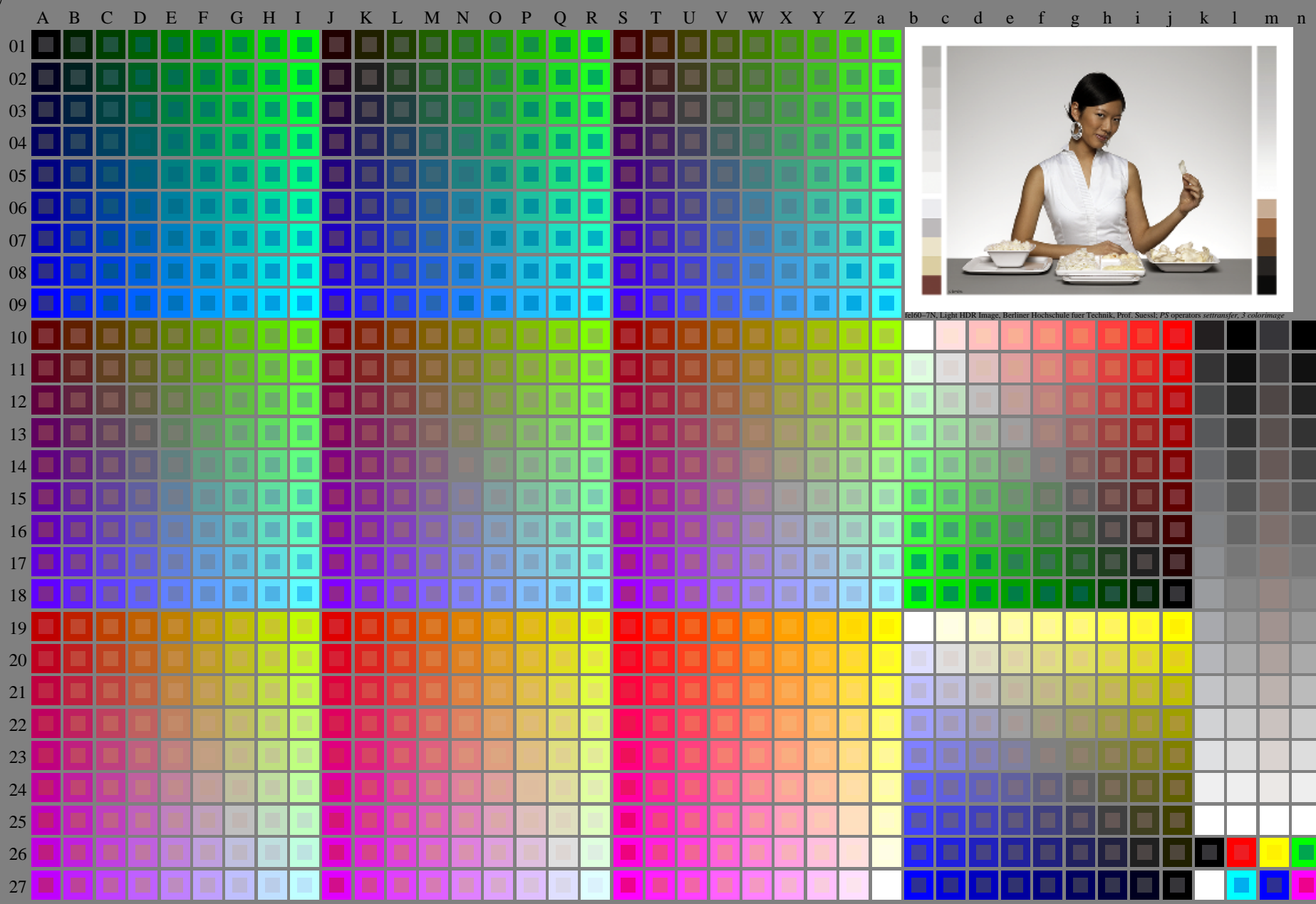


<http://farbe.li.tu-berlin.de/fel6/fel610na.txt> / .ps; only vector graphic VG; start output see separate images of this page: <http://farbe.li.tu-berlin.de/fel6/fel6.htm>

see similar files of the whole serie: <http://farbe.li.tu-berlin.de/fel6.htm>
technical information: <http://farbe.li.tu-berlin.de/A/33872E.html>
or <http://standards.iso.org/iso/9241/506/ed-2/index.html>



fel60-7N, Light HDR Image, Berliner Hochschule fuer Technik, Prof. Süssel; PS operators settransfer, 3 colorimage

TUB registration: 20240301-fel6/fel610na.txt / .ps
application for evaluation and measurement of display or print output

TUB material: code=rh4ta

fel60-7N, Page 1/16, Test chart 2G with 40x27=1080 colours; digital equidistant 9 or 16 step colour scales; Colour data in column (A-n): rgb + cmy0 (A_j + k26_{n27}), 000n (k), w (l), nnn0 (m), www (n), colorm = 0, xchart = 0, pchart = 0

TUB-test chart fel6; fel6: Test chart uh_d08 with 40x27=1080 colours; DH
Digital equidistant 9 or 16 step colour scales, L-HDR; $\gamma_R=0,8$

000n/w/cmy0/rgb
->rgb*d, 030-0:

This figure is a complex color calibration chart. It features a large grid of 27 rows and 27 columns of color patches. The columns are labeled with letters A through n, and the rows are labeled with numbers 01 through 27. The patches include a wide range of colors, from primary and secondary colors to various shades of gray and skin tones. A central image of a woman in a white dress eating popcorn is positioned on the right side of the grid, partially overlapping the color patches. The chart is used for color calibration and measurement of display or print output. The chart is surrounded by a border containing technical information, including the URL <http://farbe.li.tu-berlin.de/fel6/fel610na.txt>, the registration code 20240301-fel6/fel610na.txt / .ps, and the material code rh4ta. The chart also includes a target for registration and measurement of display or print output.