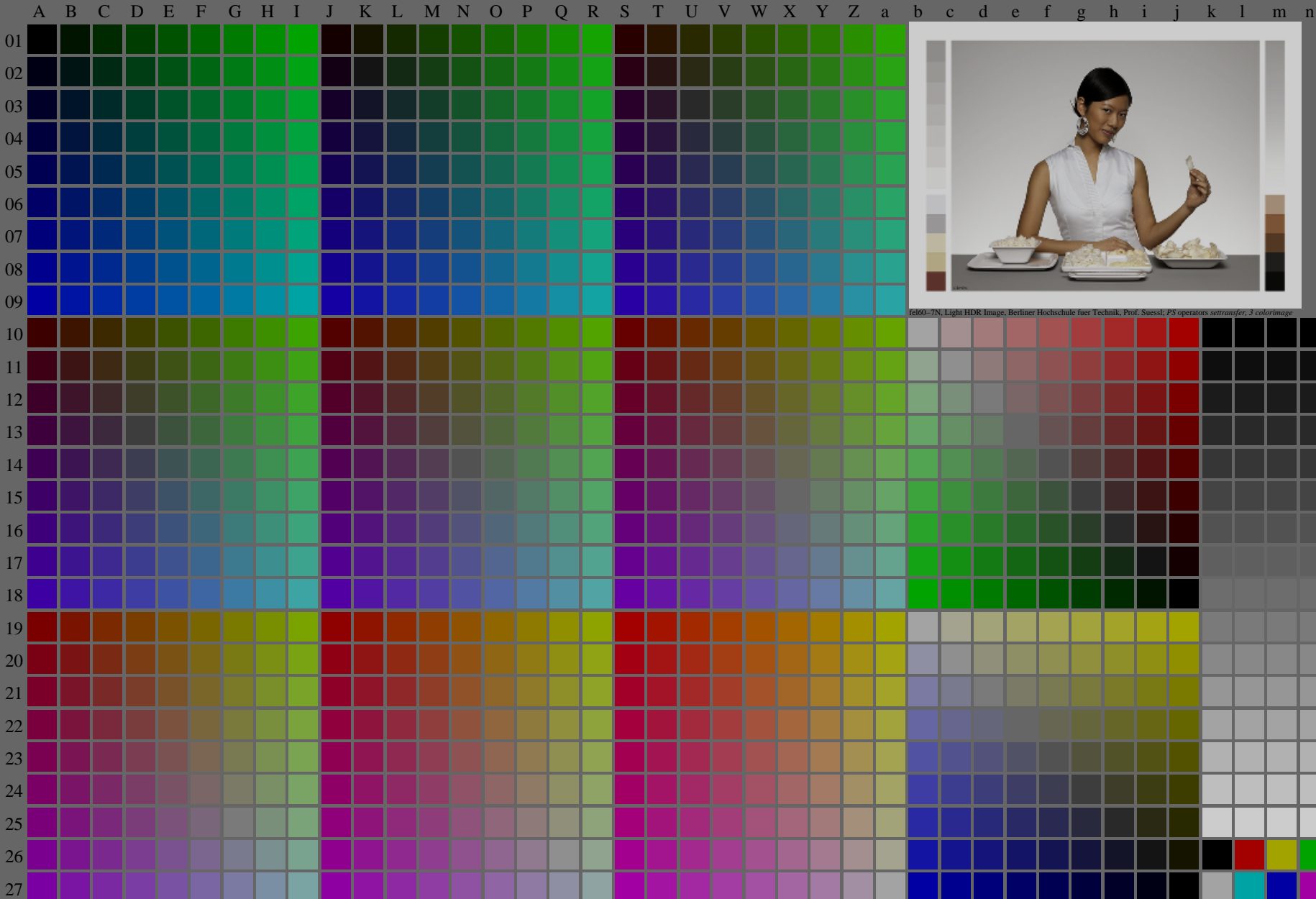


<http://farbe.li.tu-berlin.de/fel6/fel610na.txt> / .ps; only vector graphic VG; start output  
see separate images of this page: <http://farbe.li.tu-berlin.de/fel6/fel6.htm>

see similar files of the whole series: <http://farbe.li.tu-berlin.de/fel6.htm>  
technical information: <http://farbe.li.tu-berlin.de/A/33872E.html>  
or <http://standards.iso.org/iso/9241/306/ed-2/index.html>

TUB registration: 20240301-fel6/fel610na.txt / .ps  
application for evaluation and measurement of display or print output  
TUB material: code=rh4ta

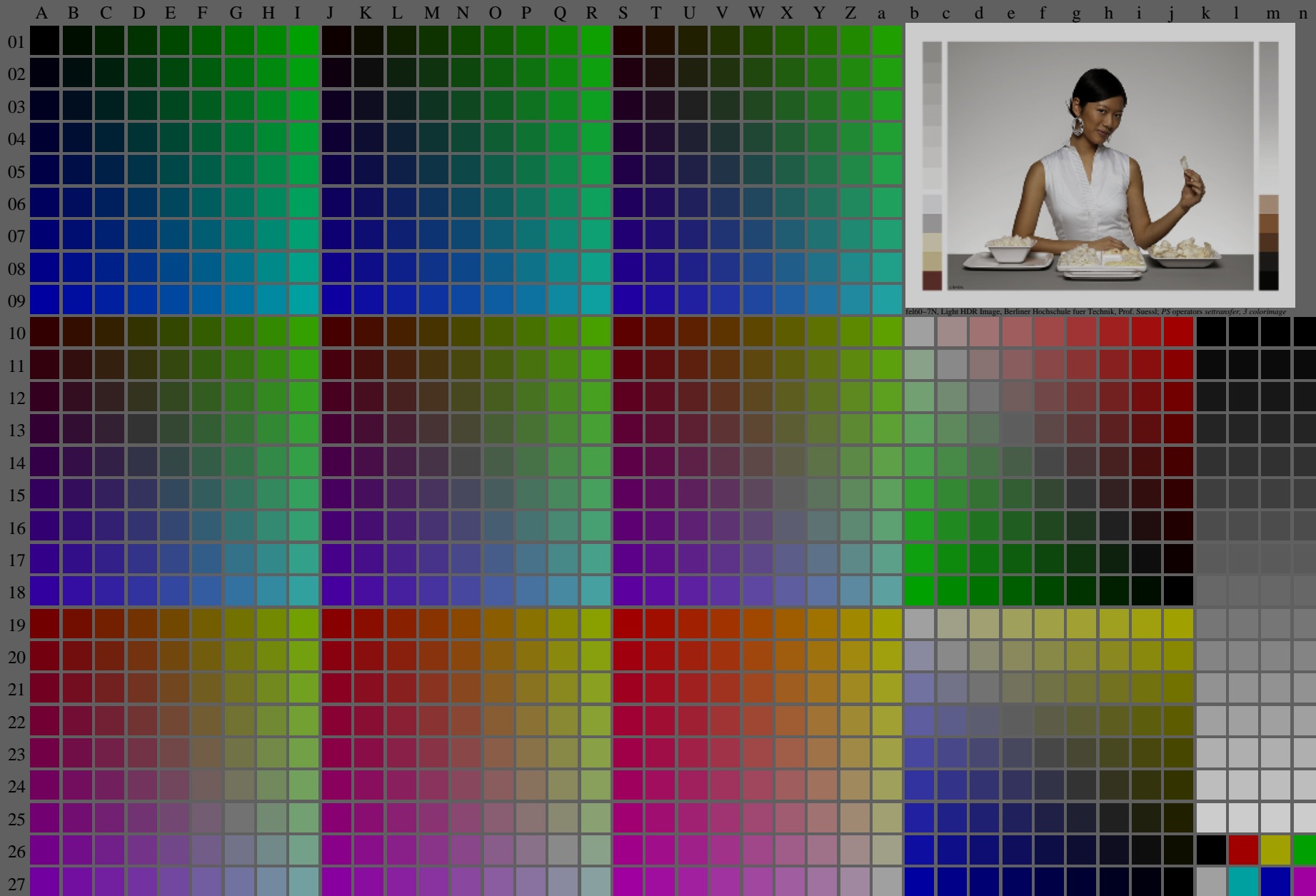


TUB-test chart fel6; fel6: Test chart uh\_d08 with 40x27=1080 colours; 1MR, DH 000n/w/cmy0/rgb  
Digital equidistant 9 or 16 step colour scales, L-HDR;  $\gamma_R=0,8$   
-> $rgb^*_d, 130-0$ :

<http://farbe.li.tu-berlin.de/fel6/fel610na.txt/.ps>; only vector graphic VG;  
see separate images of this page: <http://farbe.li.tu-berlin.de/fel6/fel6.htm>

see similar files of the whole series: <http://farbe.li.tu-berlin.de/fel6.htm>  
technical information: <http://farbe.li.tu-berlin.de/A/33872E.html>  
or <http://standards.iso.org/iso/9241/306/ed-2/index.html>

TUB registration: 20240301-fel6/fel610na.txt/.ps  
application for evaluation and measurement of display or print output  
TUB material: code=rh4ta



fel60-7N, Light HDR Image, Berliner Hochschule fuer Technik, Prof. Suesst; PS operators seltransfer, 3 colorimage

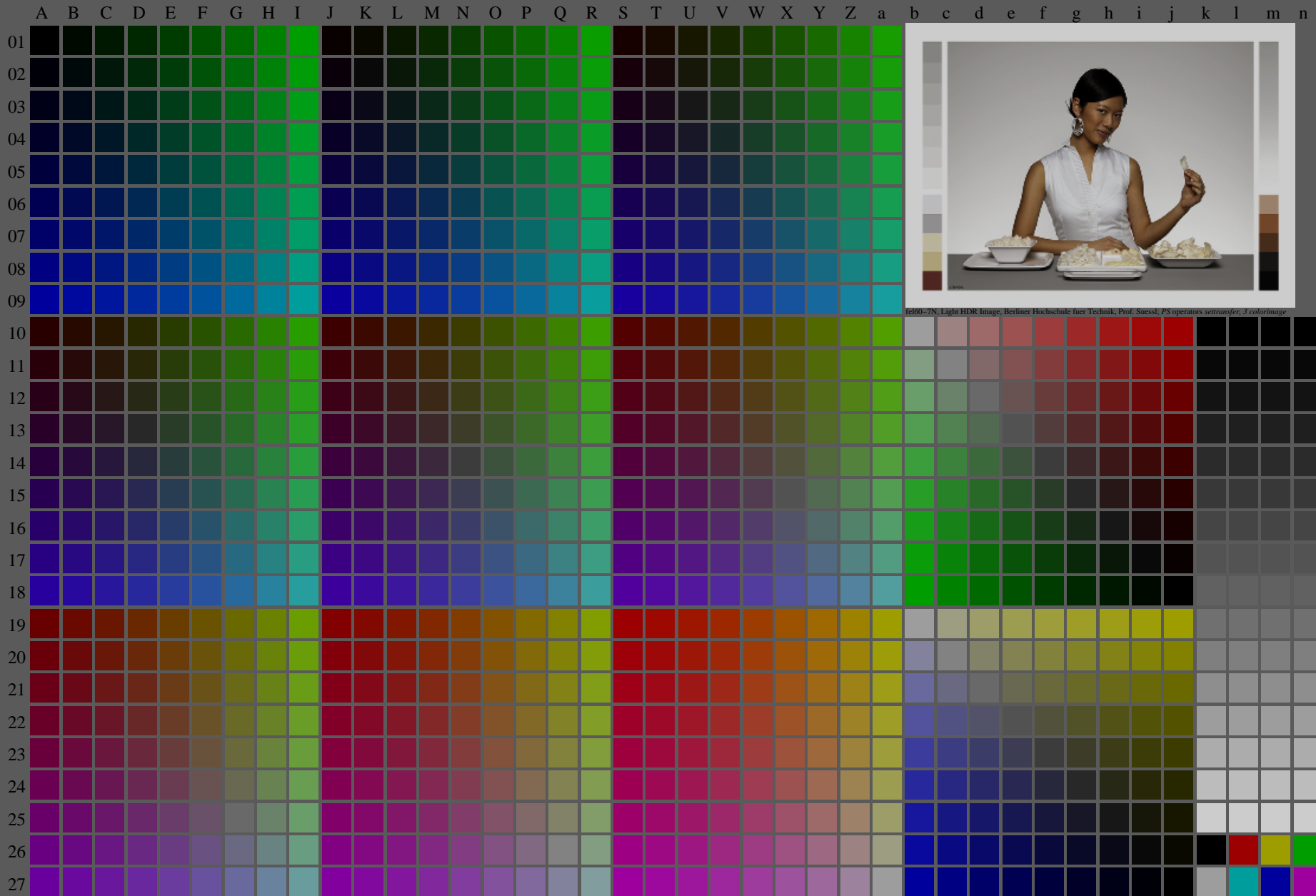
fel60-7N, Page 1/16, Test chart 2G with 40x27=1080 colours; digital equidistant 9 or 16 step colour scales; Colour data in column (A-n):  $rgb^*_d(A_n)$ , colorm = 1, xchart = 8, pchart = 0

TUB-test chart fel6; fel6: Test chart uh\_d08 with 40x27=1080 colours; 1MR, DH 000n/w/cmy0/rgb  
Digital equidistant 9 or 16 step colour scales, L-HDR;  $\gamma_R=0,8$   
-> $rgb^*_d, 130-0$ :

<http://farbe.li.tu-berlin.de/fel6/fel610na.txt/.ps>; only vector graphic VG;  
see separate images of this page: <http://farbe.li.tu-berlin.de/fel6/fel6.htm>

see similar files of the whole series: <http://farbe.li.tu-berlin.de/fel6.htm>  
technical information: <http://farbe.li.tu-berlin.de/A/33872E.html>  
or <http://standards.iso.org/iso/9241/3M6/ed-2/index.html>

TUB registration: 20240301-fel6/fel610na.txt/.ps  
application for evaluation and measurement of display or print output  
TUB material: code=rh4ta



fel60-7N, Light HDR Image, Berliner Hochschule fuer Technik, Prof. Suesst, PS operators seltransfer, 3 colorimage

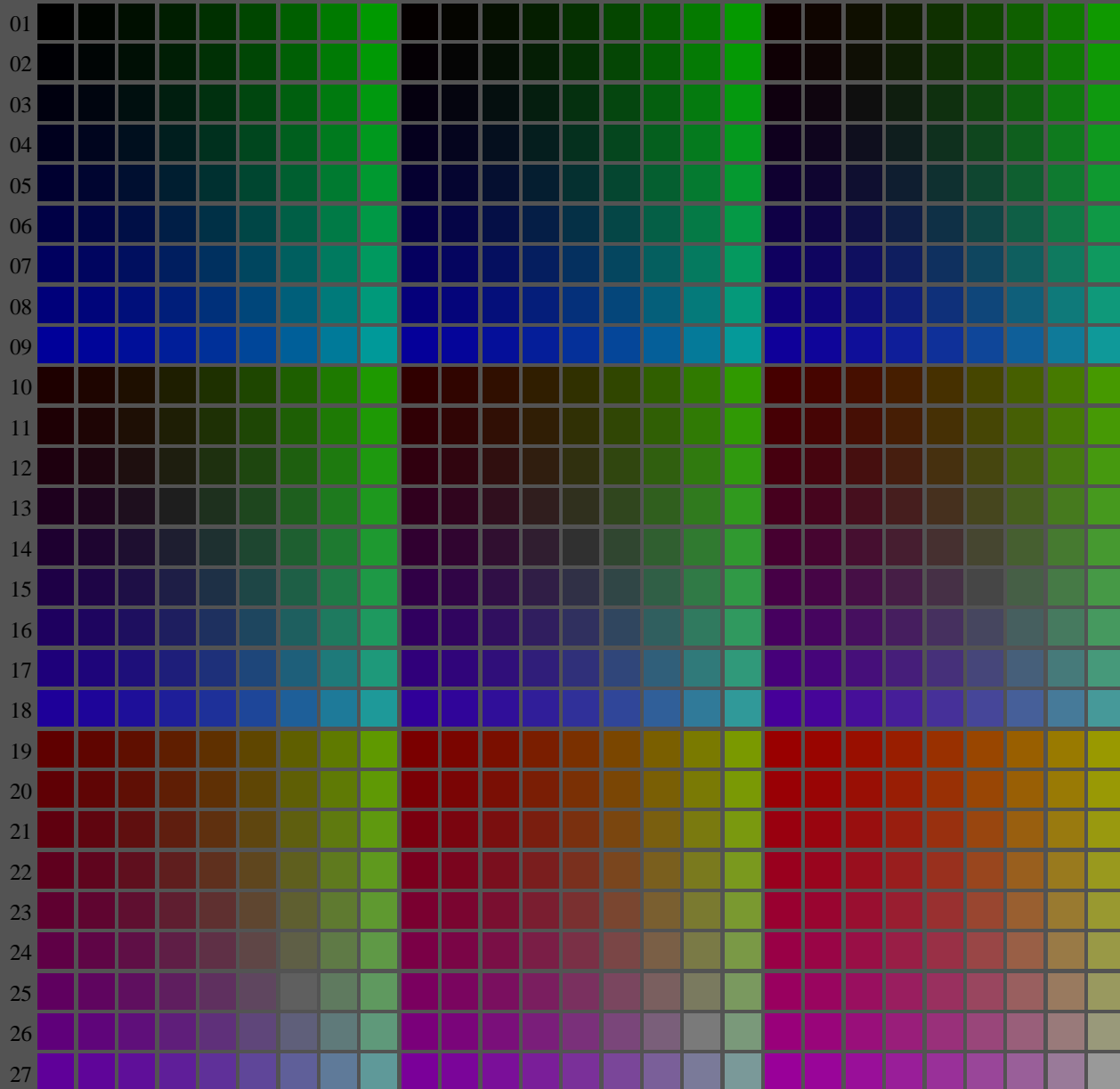
fel60-7N, Page 1/16, Test chart 2G with 40x27=1080 colours; digital equidistant 9 or 16 step colour scales; Colour data in column (A-n):  $rgb^*_d(A_n)$ , colorm = 1, xchart = 16, pchart = 0

TUB-test chart fel6; fel6: Test chart uh\_d08 with 40x27=1080 colours; 1MR, DH 000n/w/cmy0/rgb  
Digital equidistant 9 or 16 step colour scales, L-HDR;  $\gamma_R=0,8$   
-> $rgb^*_d, 130-0$ :

<http://farbe.li.tu-berlin.de/fel6/fel610fa.txt/.ps>; only vector graphic VG;  
see separate images of this page: <http://farbe.li.tu-berlin.de/fel6/fel6.htm>

V L O Y M C  
A B C D E F G H I J K L M N O P Q R S T U V W X Y Z a b c d e f g h i j k l m n

see similar files of the whole series: <http://farbe.li.tu-berlin.de/fel6.htm>  
technical information: <http://farbe.li.tu-berlin.de/A/33872E.html>  
or <http://standards.iso.org/iso/9241/5M6/ed-2/index.html>



fel60-7N, Light HDR Image, Berliner Hochschule fuer Technik, Prof. Suesst, PS operators seltransfer, 3 colorimage

fel60-7N, Page 1/16, Test chart 2G with 40x27=1080 colours; digital equidistant 9 or 16 step colour scales; Colour data in column (A-n):  $rgb^*_d(A_n)$ , colorm = 1, xchart = 24, pchart = 0

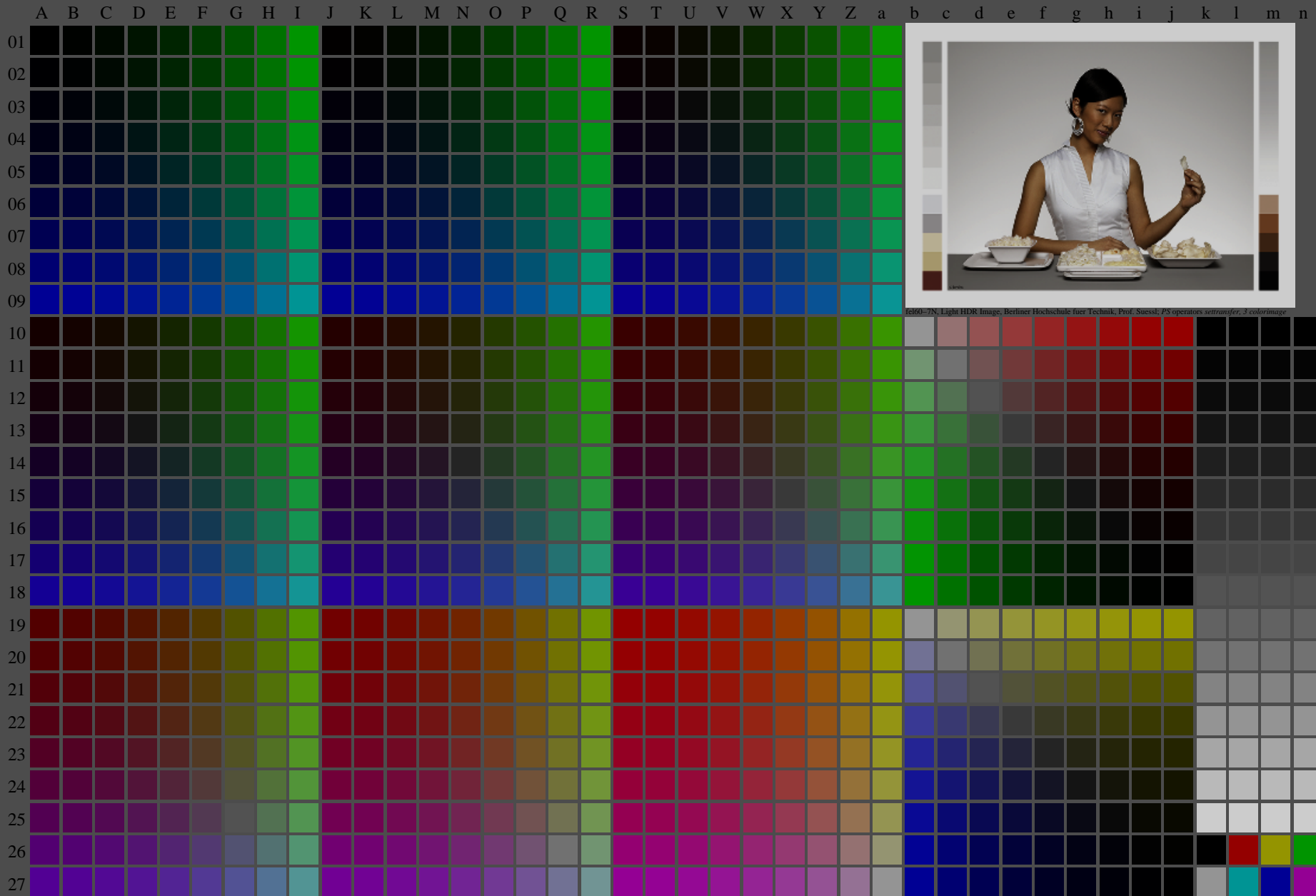
TUB-test chart fel6; fel6: Test chart uh\_d08 with 40x27=1080 colours; 1MR, DH 000n/w/cmy0/rgb  
Digital equidistant 9 or 16 step colour scales, L-HDR;  $\gamma_R=0,8$   
-> $rgb^*_d, 130-0$

TUB registration: 20240301-fel6/fel610fa.txt/.ps  
application for evaluation and measurement of display or print output  
TUB material: code=rha4ta

<http://farbe.li.tu-berlin.de/fel6/fel610fa.txt/.ps>; only vector graphic VG;  
see separate images of this page: <http://farbe.li.tu-berlin.de/fel6/fel6.htm>

see similar files of the whole serie: <http://farbe.li.tu-berlin.de/fel6.htm>  
technical information: <http://farbe.li.tu-berlin.de/AV33872E.html>  
or <http://standards.iso.org/iso/9241/5M6/ed-2/index.html>

TUB registration: 20240301-fel6/fel610fa.txt/.ps  
application for evaluation and measurement of display or print output  
TUB material: code=rh4ta



fel60-7N, Light HDR Image, Berliner Hochschule fuer Technik, Prof. Suesst, PS operators seltransfer, 3 colorimage

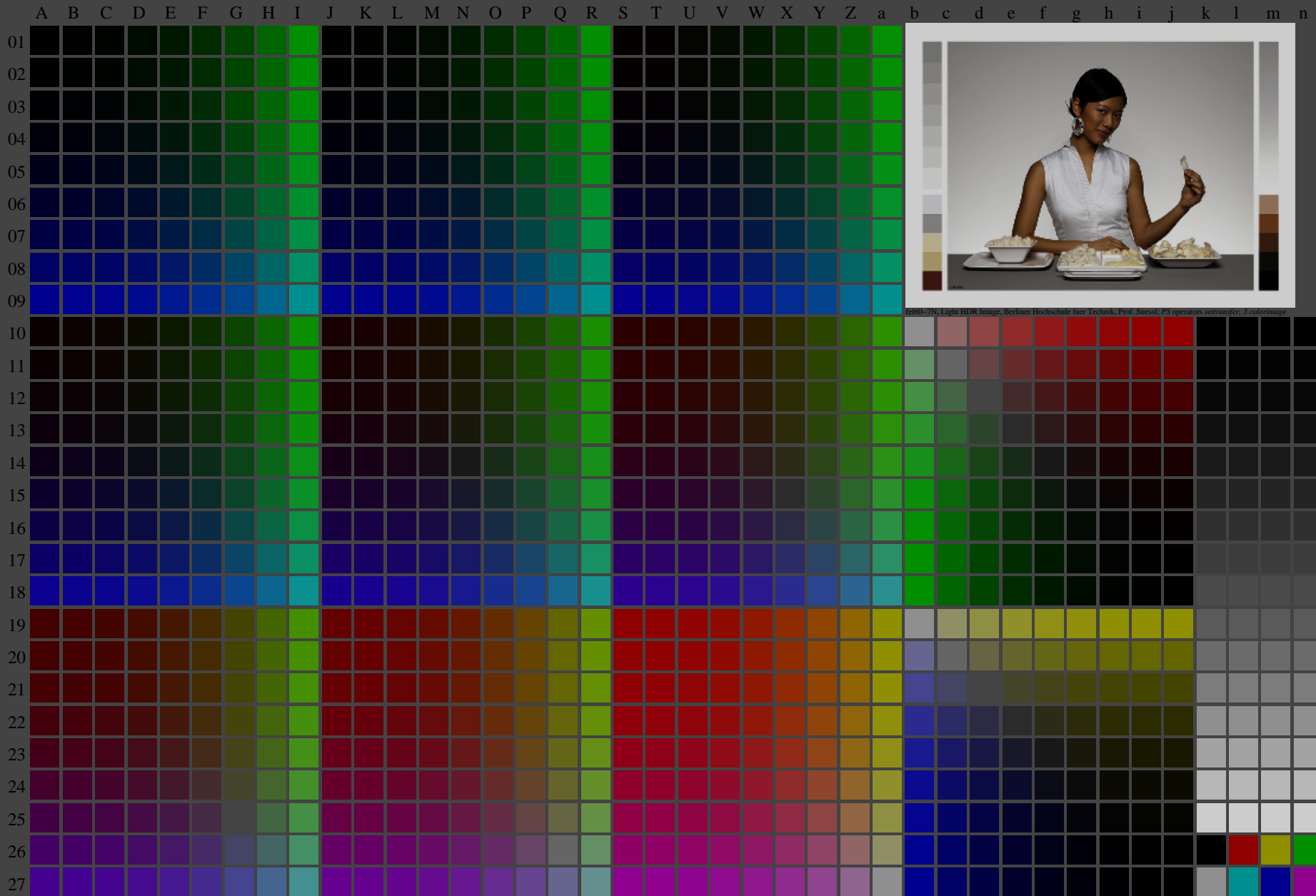
fel60-7N, Page 1/16, Test chart 2G with 40x27=1080 colours; digital equidistant 9 or 16 step colour scales; Colour data in column (A-n):  $rgb^*_{\lambda}$  (A\_n), colorm = 1, xchart = 32, pchart = 0

TUB-test chart fel6; fel6: Test chart uh\_d08 with 40x27=1080 colours; 1MR, DH 000n/w/cmy0/rgb  
Digital equidistant 9 or 16 step colour scales, L-HDR;  $\gamma_R=0,8$   
-> $rgb^*_d$ , 130-0:

<http://farbe.li.tu-berlin.de/fel6/fel610fa.txt/.ps>; only vector graphic VG;  
see separate images of this page: <http://farbe.li.tu-berlin.de/fel6/fel6.htm>

see similar files of the whole serie: <http://farbe.li.tu-berlin.de/fels.htm>  
technical information: <http://farbe.li.tu-berlin.de/A/33872E.html>  
or <http://standards.iso.org/iso/9241/306/ed-2/index.html>

TUB registration: 20240301-fel6/fel610fa.txt/.ps  
application for evaluation and measurement of display or print output  
TUB material: code=rh4ta



fel60-7N, Light HDR Image, Berliner Hochschule fuer Technik, Prof. Suesst, PS operators seltransfer, 3 colorimage

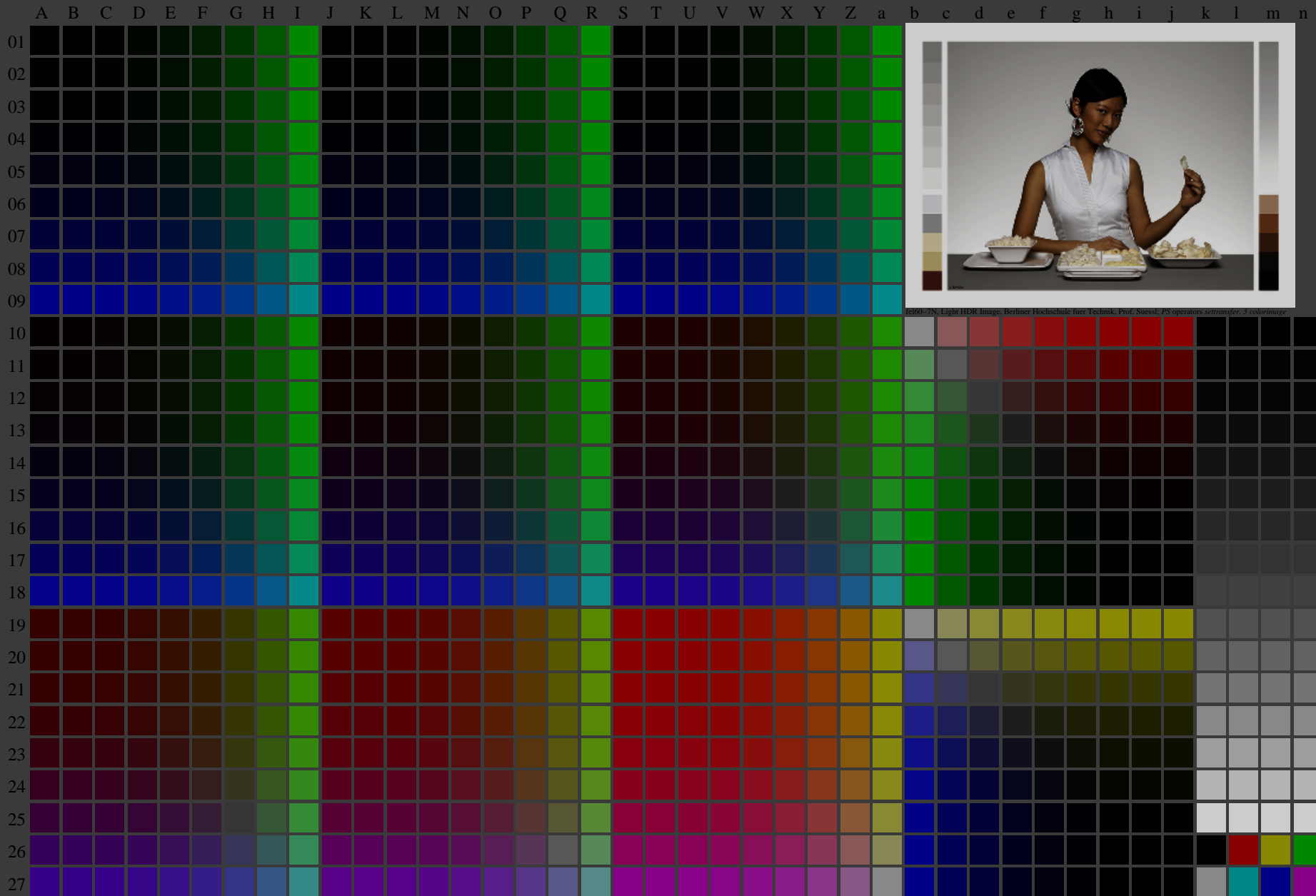
fel60-7N, Page 1/16, Test chart 2G with 40x27=1080 colours; digital equidistant 9 or 16 step colour scales; Colour data in column (A-n):  $rgb^* \cdot (A_n)$ ,  $colorm = 1$ ,  $xchart = 40$ ,  $pchart = 0$

TUB-test chart fel6; fel6: Test chart uh\_d08 with 40x27=1080 colours; 1MR, DH 000n/w/cmy0/rgb  
Digital equidistant 9 or 16 step colour scales, L-HDR;  $\gamma_R=0,8$   
-> $rgb^*_d$ , 130-0:

<http://farbe.li.tu-berlin.de/fel6/fel610fa.txt/.ps>; only vector graphic VG;  
see separate images of this page: <http://farbe.li.tu-berlin.de/fel6/fel6.htm>

see similar files of the whole serie: <http://farbe.li.tu-berlin.de/fels.htm>  
technical information: <http://farbe.li.tu-berlin.de/A/33872E.html>  
or <http://standards.iso.org/iso/9241/306/ed-2/index.html>

TUB registration: 20240301-fel6/fel610fa.txt/.ps  
application for evaluation and measurement of display or print output  
TUB material: code=rh4ta



fel60-7N, Light HDR Image, Berliner Hochschule fuer Technik, Prof. Suesst, PS operators selbstaer, 3 colorimage

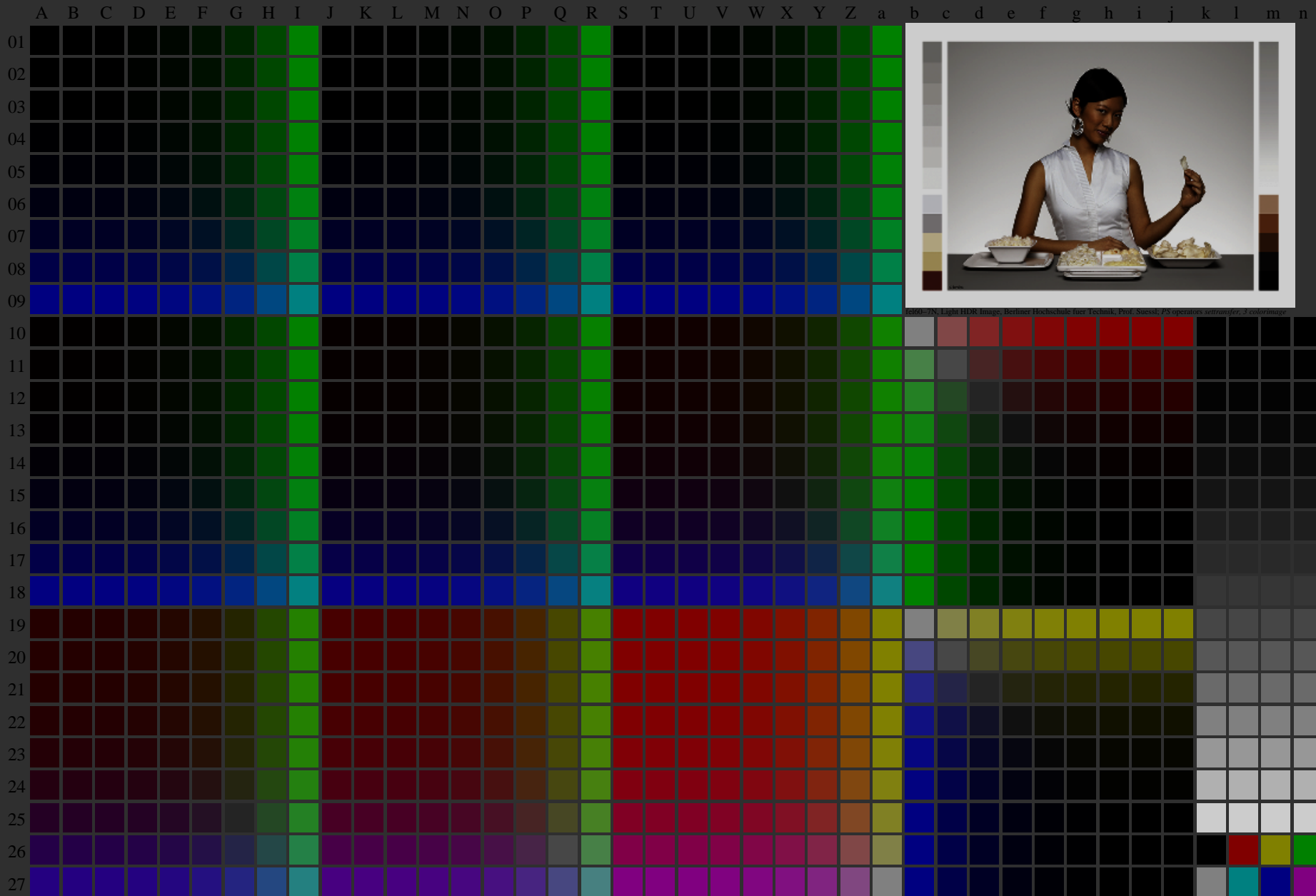
fel60-7N, Page 1/16, Test chart 2G with 40x27=1080 colours; digital equidistant 9 or 16 step colour scales; Colour data in column (A-n):  $rgb^*_{d}$  (A\_n), colorm = 1, xchart = 48, pchart = 0

TUB-test chart fel6; fel6: Test chart uh\_d08 with 40x27=1080 colours; 1MR, DH 000n/w/cmy0/rgb  
Digital equidistant 9 or 16 step colour scales, L-HDR;  $\gamma_R=0,8$   
-> $rgb^*_{d}$ , 130-0:

<http://farbe.li.tu-berlin.de/fel6/fel610fa.txt> /.ps; only vector graphic VG;  
see separate images of this page: <http://farbe.li.tu-berlin.de/fel6/fel6.him>

see similar files of the whole serie: <http://farbe.li.tu-berlin.de/fels.htm>  
technical information: <http://farbe.li.tu-berlin.de/A/33872E.html>  
or <http://standards.iso.org/iso/9241/306/ed-2/index.html>

TUB registration: 20240301-fel6/fel610fa.txt /.ps  
application for evaluation and measurement of display or print output  
TUB material: code=rh4ta



fel60-7N, Light HDR Image, Berliner Hochschule fuer Technik, Prof. Süssel, PS operators schrauer, 3 colorimage

fel60-7N, Page 1/16, Test chart 2G with 40x27=1080 colours; digital equidistant 9 or 16 step colour scales; Colour data in column (A-n):  $rgb^*_{d}$  (A\_n), colorm = 1, xchart = 56, pchart = 0

TUB-test chart fel6; fel6: Test chart uh\_d08 with 40x27=1080 colours; 1MR, DH 000n/w/cmy0/rgb  
Digital equidistant 9 or 16 step colour scales, L-HDR;  $\gamma_R=0,8$   
-> $rgb^*_d$ , 130-0: