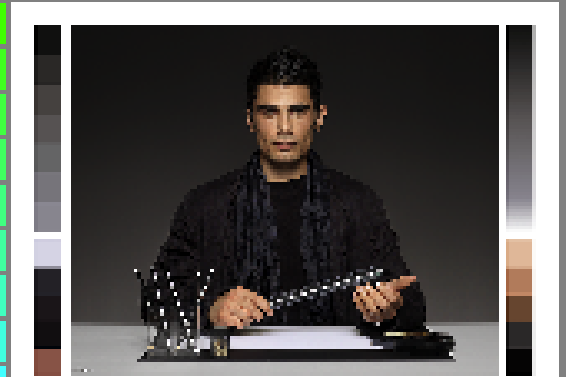
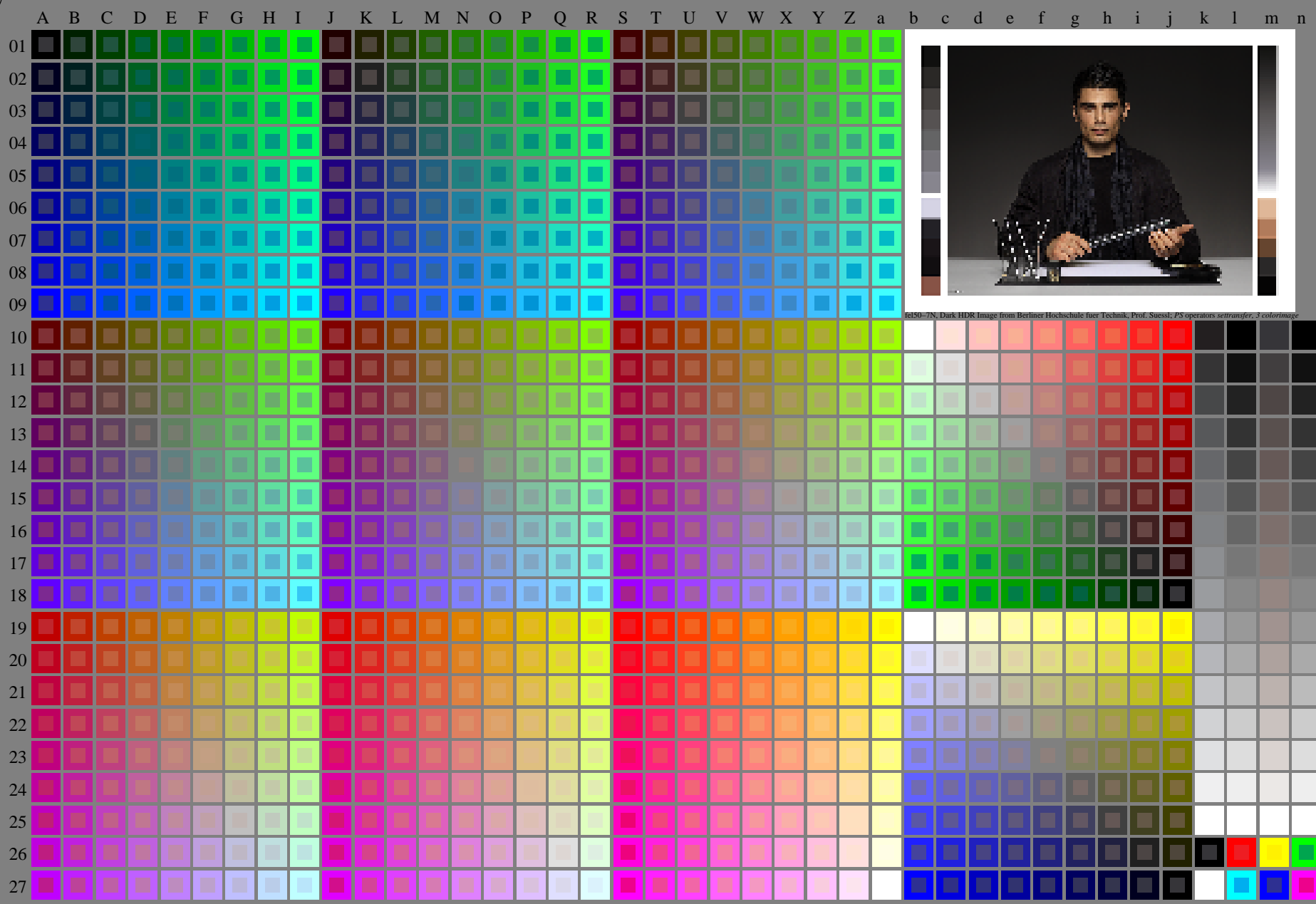


<http://farbe.li.tu-berlin.de/fel5/fel510na.txt> /ps; only vector graphic VG; start output see separate images of this page: <http://farbe.li.tu-berlin.de/fel5/fel5.htm>

see similar files of the whole serie: <http://farbe.li.tu-berlin.de/fel5.htm>
technical information: <http://farbe.li.tu-berlin.de/A/33872E.html>
or <http://standards.iso.org/iso/9241/506/ed-2/index.html>



fel50-7N, Dark HDR Image from Berliner Hochschule fuer Technik, Prof. Suesel; PS operators settransfer, 3 colorimage

TUB registration: 20240301-fel5/fel510na.txt /ps
application for evaluation and measurement of display or print output
TUB material: code=rh4ta

fel50-7N, Page 1/16, Test chart 2G with 40x27=1080 colours; digital equidistant 9 or 16 step colour scales; Colour data in column (A-n): rgb + cmy0 (A_j + k26_n27), 000n (k), w (l), nnn0 (m), www (n), colorm = 0, xchart = 0, pchart = 0

TUB-test chart fel5; fel5: Test chart ul_d09 with 40x27=1080 colours; DH
Digital equidistant 9 or 16 step colour scales, D-HDR; $\gamma_R=0,9$

000n/w/cmy0/rgb
->rgb*d, 030-0:

Color calibration chart with registration marks, color bars, and technical information. The chart is surrounded by a border with color bars and registration marks. The top and bottom borders contain color bars and registration marks. The left and right borders contain registration marks and technical information.