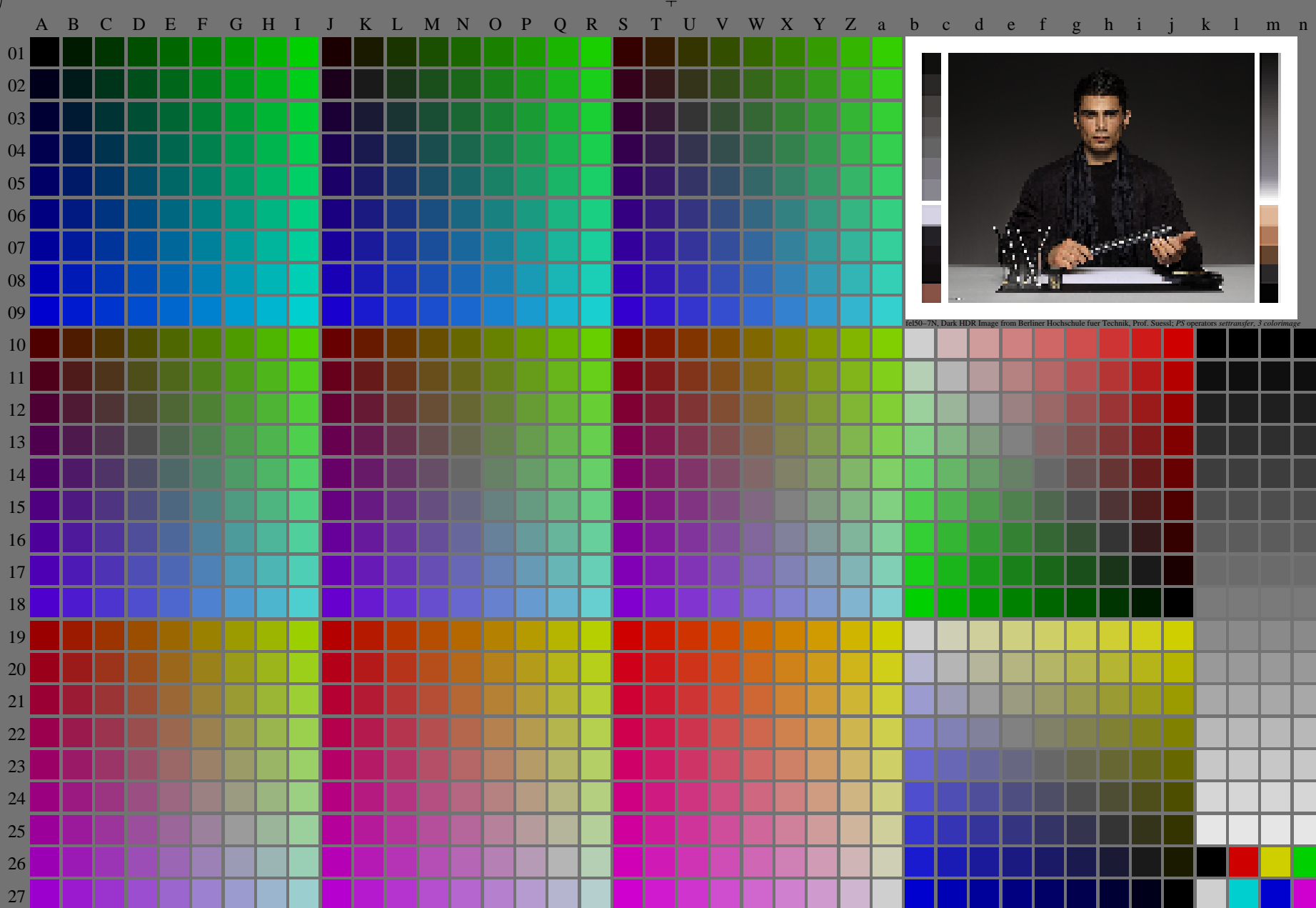


<http://farbe.li.tu-berlin.de/fel5/fel510na.txt/.ps>; only vector graphic VG; start output
see separate images of this page: <http://farbe.li.tu-berlin.de/fel5/fel5.htm>

see similar files of the whole series: <http://farbe.li.tu-berlin.de/fel5.htm>
technical information: <http://farbe.li.tu-berlin.de/A/33872E.html>
or <http://standards.iso.org/iso/9241/306/ed-2/index.html>



fel50-7N, Dark HDR Image from Berliner Hochschule fuer Technik, Prof. Suessl; PS operators settransfer_3 colorImage

TUB registration: 20240301-fel5/fel510fa.txt/.ps
application for evaluation and measurement of display or print output
TUB material: code=rh4ta

fel50-7N, Page 1/16, Test chart 2G with 40x27=1080 colours; digital equidistant 9 or 16 step colour scales; Colour data in column (A-n): $rgb^* (A_n)$, $colorm = 1$, $xchart = 0$, $pchart = 0$

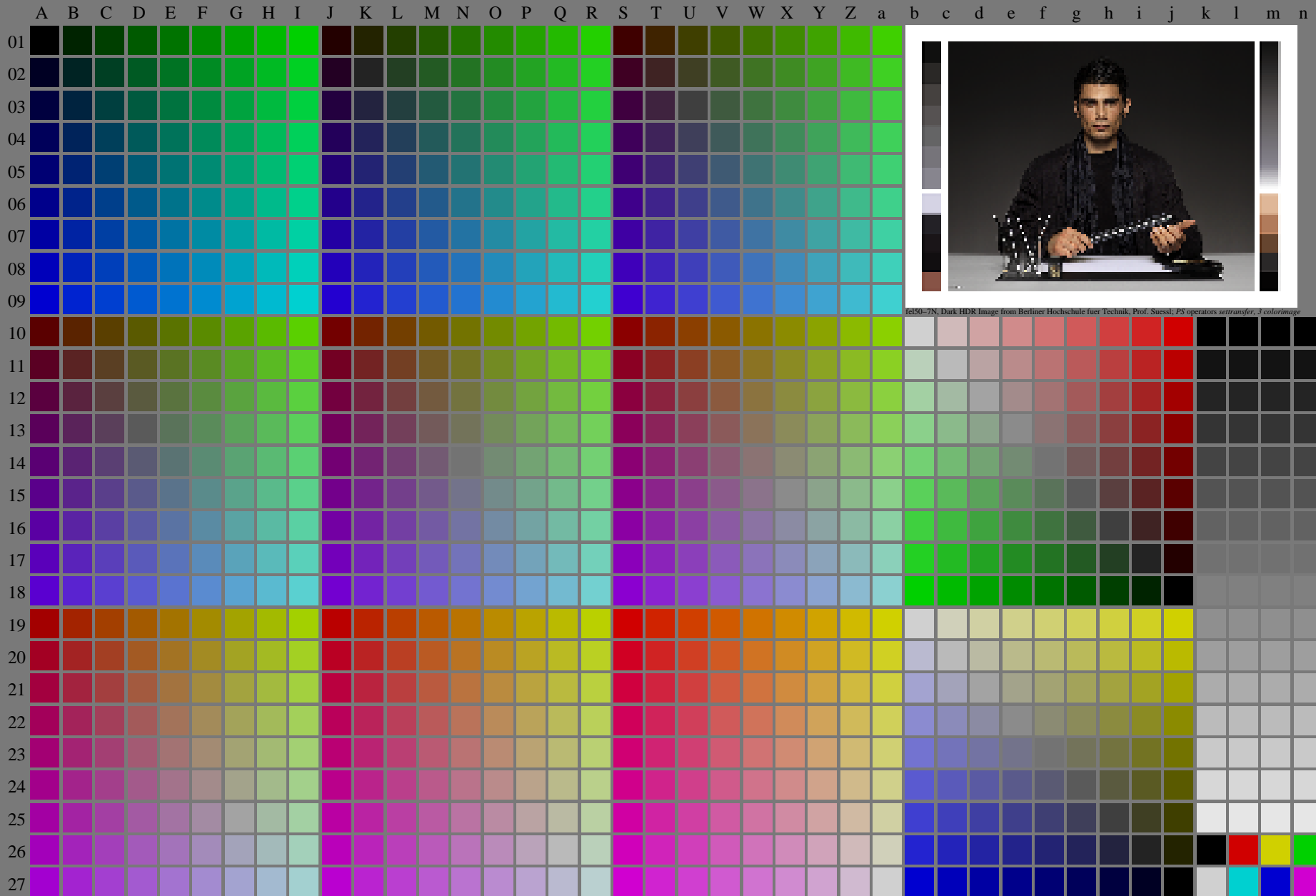
TUB-test chart fel5; fel5: Test chart ul_d09 with 40x27=1080 colours; 1MR, DH 000n/w/cmy0/rgb
Digital equidistant 9 or 16 step colour scales, D-HDR; $\gamma_R=0,9$
-> $rgb^*_d, 130-0$

<http://farbe.li.tu-berlin.de/fel5/fel510fa.txt> / .ps; only vector graphic VG;
see separate images of this page: <http://farbe.li.tu-berlin.de/fel5/fel5.htm>

see similar files of the whole series: <http://farbe.li.tu-berlin.de/fel5.htm>
technical information: <http://farbe.li.tu-berlin.de/A/33872E.html>
or <http://standards.iso.org/iso/9241/306/ed-2/index.html>

TUB registration: 20240301-fel5/fel510fa.txt / .ps
application for evaluation and measurement of display or print output

TUB material: code=rh4ta



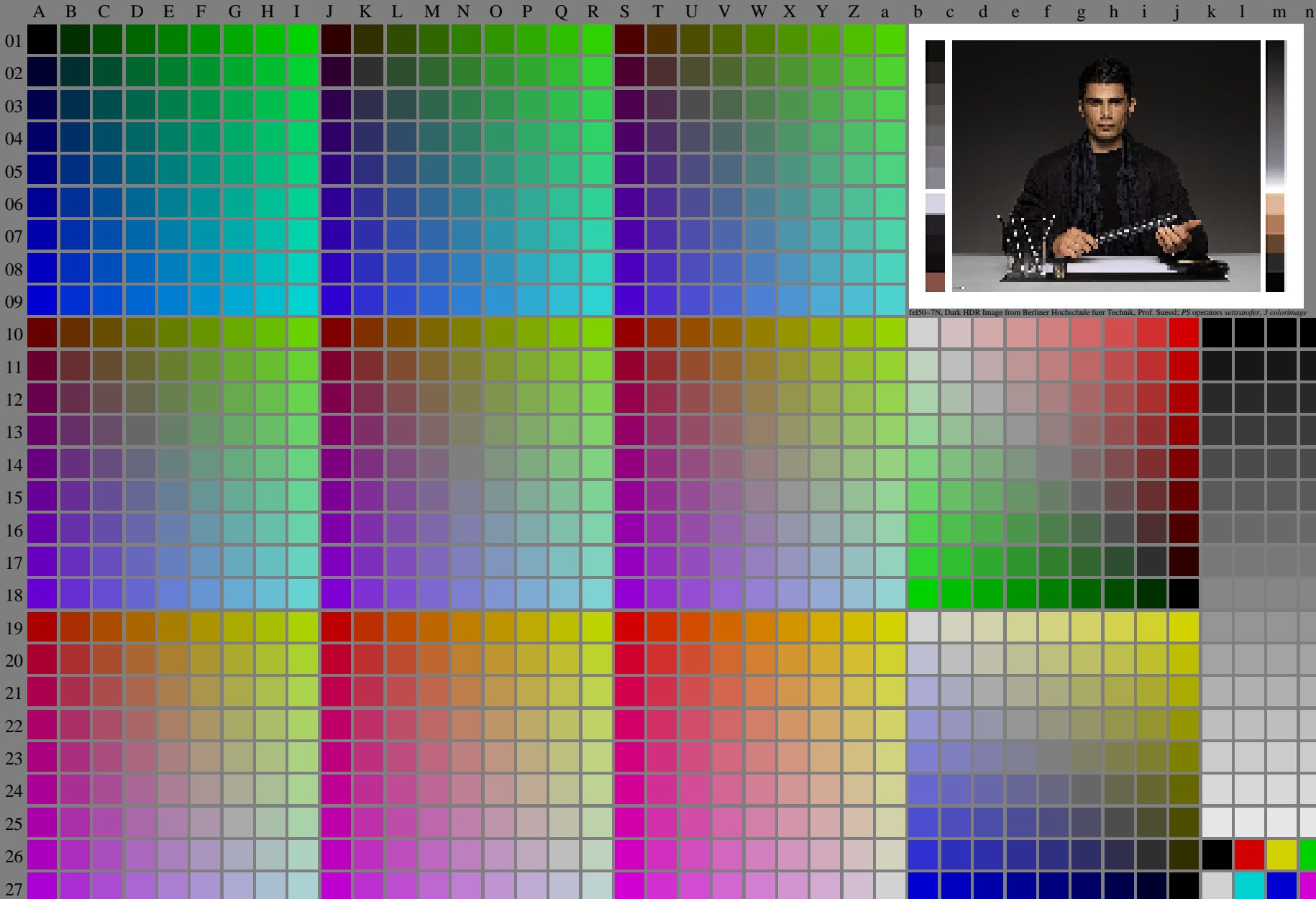
fel50-7N, Page 1/16, Test chart 2G with 40x27=1080 colours; digital equidistant 9 or 16 step colour scales; Colour data in column (A-n): $rgb^* (A_n)$, $colorm = 1$, $xchart = 1$, $pchart = 0$

TUB-test chart fel5; fel5: Test chart ul_d09 with 40x27=1080 colours; 1MR, DH 000n/w/cmy0/rgb
Digital equidistant 9 or 16 step colour scales, D-HDR; $\gamma_R=0,9$
-> rgb^*_d , 131-0:

<http://farbe.li.tu-berlin.de/fel5/fel510fa.txt> / .ps; only vector graphic VG;
see separate images of this page: <http://farbe.li.tu-berlin.de/fel5/fel5.htm>

see similar files of the whole series: <http://farbe.li.tu-berlin.de/fel5.htm>
technical information: <http://farbe.li.tu-berlin.de/A/33872E.html>
or <http://standards.iso.org/iso/9241/306/ed-2/index.html>

TUB registration: 20240301-fel5/fel510fa.txt / .ps
application for evaluation and measurement of display or print output
TUB material: code=rh4ta



fel50-7N, Dark HDR Image from Berliner Hochschule fuer Technik, Prof. Suessl; PS operators settransfer, 3 colorImage

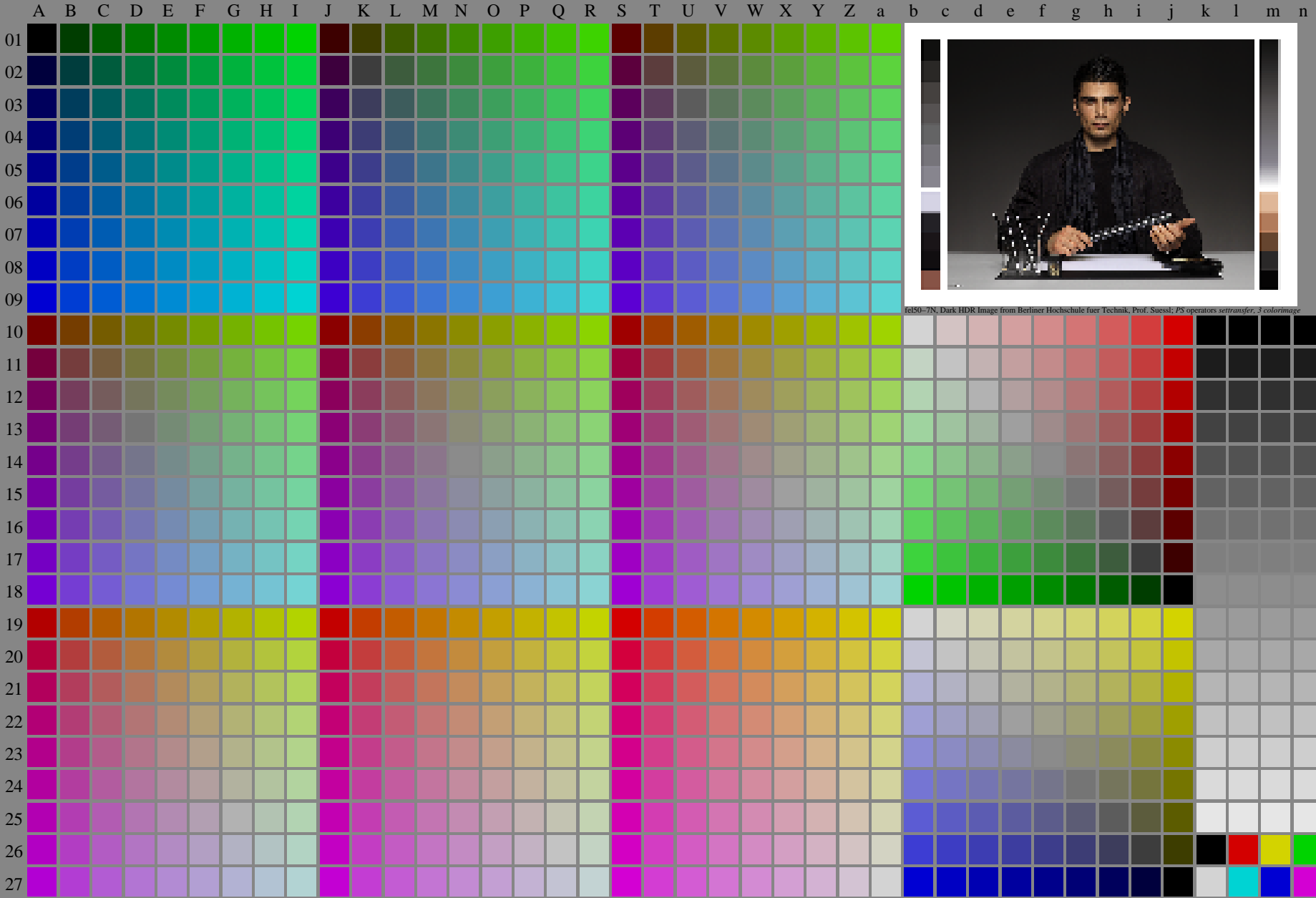
fel50-7N, Page 1/16, Test chart 2G with 40x27=1080 colours; digital equidistant 9 or 16 step colour scales; Colour data in column (A-n): $rgb^*(A_n)$, colorm = 1, xchart = 2, pchart = 0

TUB-test chart fel5; fel5: Test chart ul_d09 with 40x27=1080 colours; 1MR, DH 000n/w/cmy0/rgb
Digital equidistant 9 or 16 step colour scales, D-HDR; $\gamma_R=0,9$
-> rgb^*_d , 132-0:

<http://farbe.li.tu-berlin.de/fel5/fel510fa.txt> /.ps; only vector graphic VG;
see separate images of this page: <http://farbe.li.tu-berlin.de/fel5/fel5.htm>

see similar files of the whole series: <http://farbe.li.tu-berlin.de/fels.htm>
technical information: <http://farbe.li.tu-berlin.de/A/33872E.html>
or <http://standards.iso.org/iso/9241/306/ed-2/index.html>

TUB registration: 20240301-fel5/fel510fa.txt /.ps
application for evaluation and measurement of display or print output
TUB material: code=rh4ta



fel50-7N, Page 1/16, Test chart 2G with 40x27=1080 colours; digital equidistant 9 or 16 step colour scales; Colour data in column (A-n): $rgb^*_d(A_n)$, $colorm = 1$, $xchart = 3$, $pchart = 0$

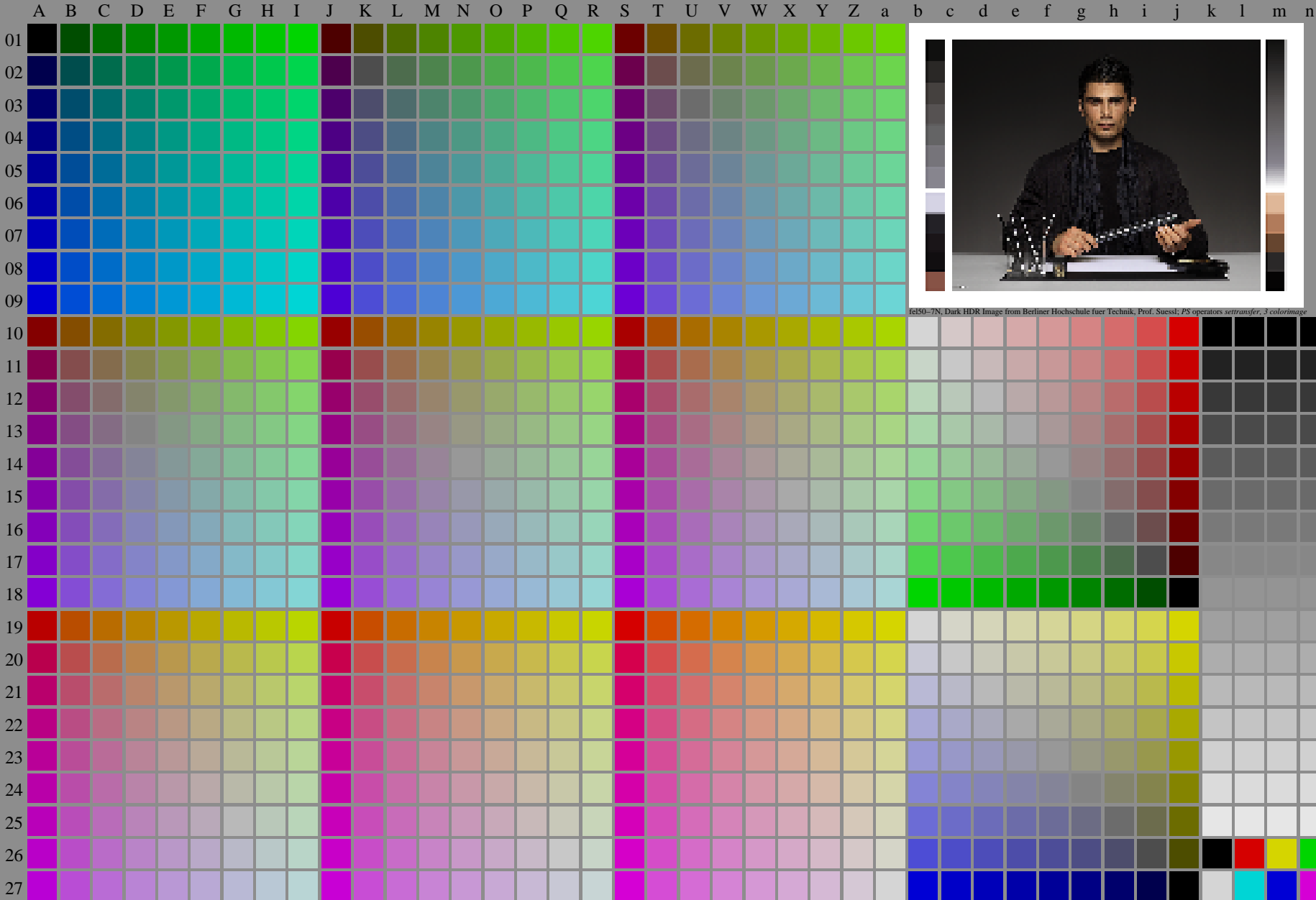
TUB-test chart fel5; fel5: Test chart ul_d09 with 40x27=1080 colours; 1MR, DH 000n/w/cmy0/rgb
Digital equidistant 9 or 16 step colour scales, D-HDR; $\gamma_R=0,9$
-> $rgb^*_d, 133-0$:

<http://farbe.li.tu-berlin.de/fel5/fel510fa.txt> /.ps; only vector graphic VG;
see separate images of this page: <http://farbe.li.tu-berlin.de/fel5/fel5.htm>

see similar files of the whole series: <http://farbe.li.tu-berlin.de/fels.htm>
technical information: <http://farbe.li.tu-berlin.de/A/33872E.html>
or <http://standards.iso.org/iso/9241/306/ed-2/index.html>

TUB registration: 20240301-fel5/fel510fa.txt /.ps
application for evaluation and measurement of display or print output

TUB material: code=rh4ta



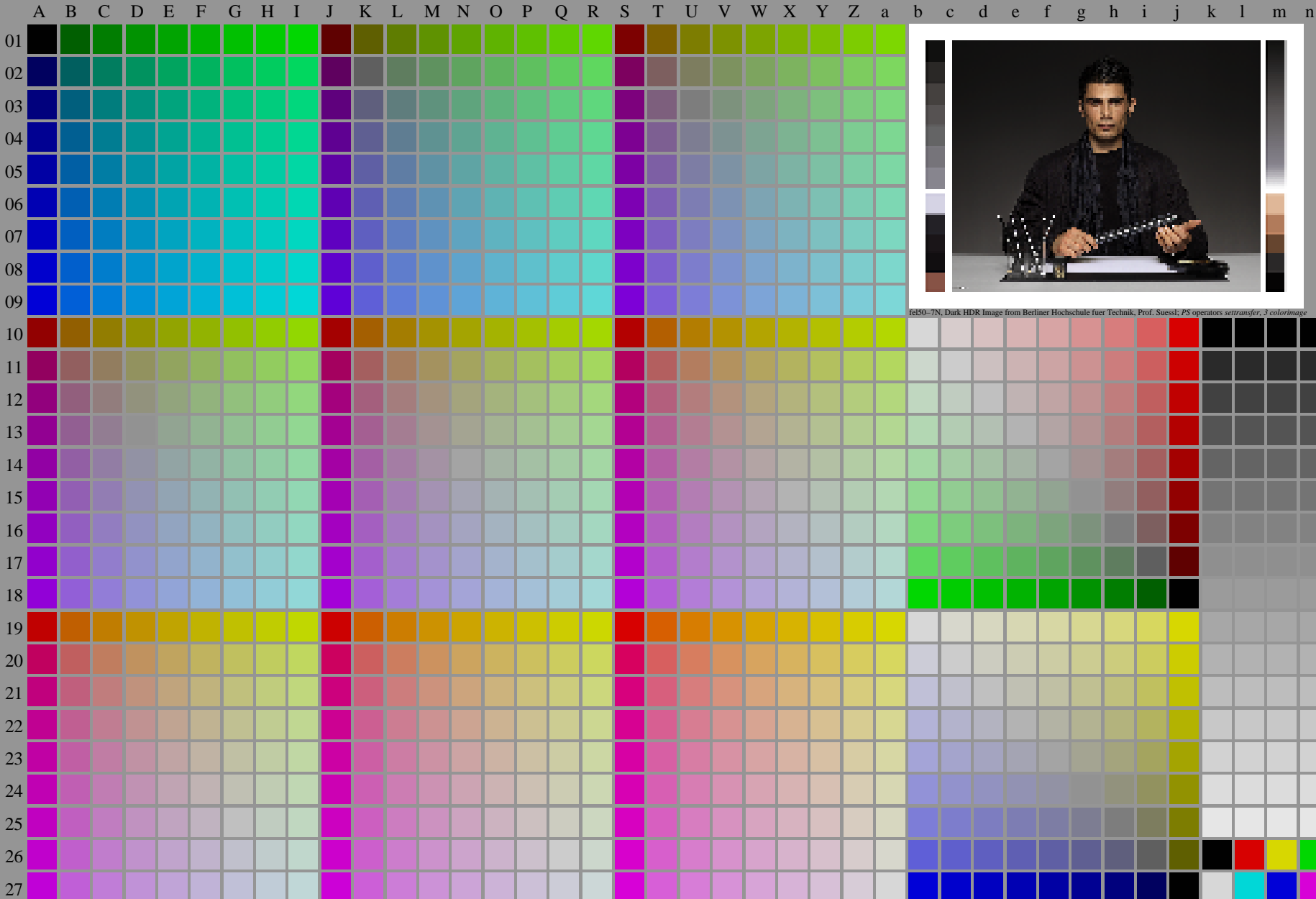
fel50-7N, Page 1/16, Test chart 2G with 40x27=1080 colours; digital equidistant 9 or 16 step colour scales; Colour data in column (A-n): $rgb^*_d(A_n)$, $colorm = 1$, $xchart = 4$, $pchart = 0$

TUB-test chart fel5; fel5: Test chart ul_d09 with 40x27=1080 colours; 1MR, DH 000n/w/cmy0/rgb
Digital equidistant 9 or 16 step colour scales, D-HDR; $\gamma_R=0,9$
-> rgb^*_d , 134-0:

<http://farbe.li.tu-berlin.de/fel5/fel510fa.txt> /.ps; only vector graphic VG;
see separate images of this page: <http://farbe.li.tu-berlin.de/fel5/fel5.htm>

see similar files of the whole series: <http://farbe.li.tu-berlin.de/fels.htm>
technical information: <http://farbe.li.tu-berlin.de/A/33872E.html>
or <http://standards.iso.org/iso/9241/306/ed-2/index.html>

TUB registration: 20240301-fel5/fel510fa.txt /.ps
application for evaluation and measurement of display or print output
TUB material: code=rh4ta

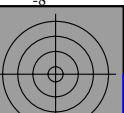
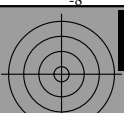


fel50-7N, Dark HDR Image from Berliner Hochschule fuer Technik, Prof. Suessli; PS operators settransfer_3 colorImage

fel50-7N, Page 1/16, Test chart 2G with 40x27=1080 colours; digital equidistant 9 or 16 step colour scales; Colour data in column (A-n): $rgb^*(A_n)$, $colorm = 1$, $xchart = 5$, $pchart = 0$

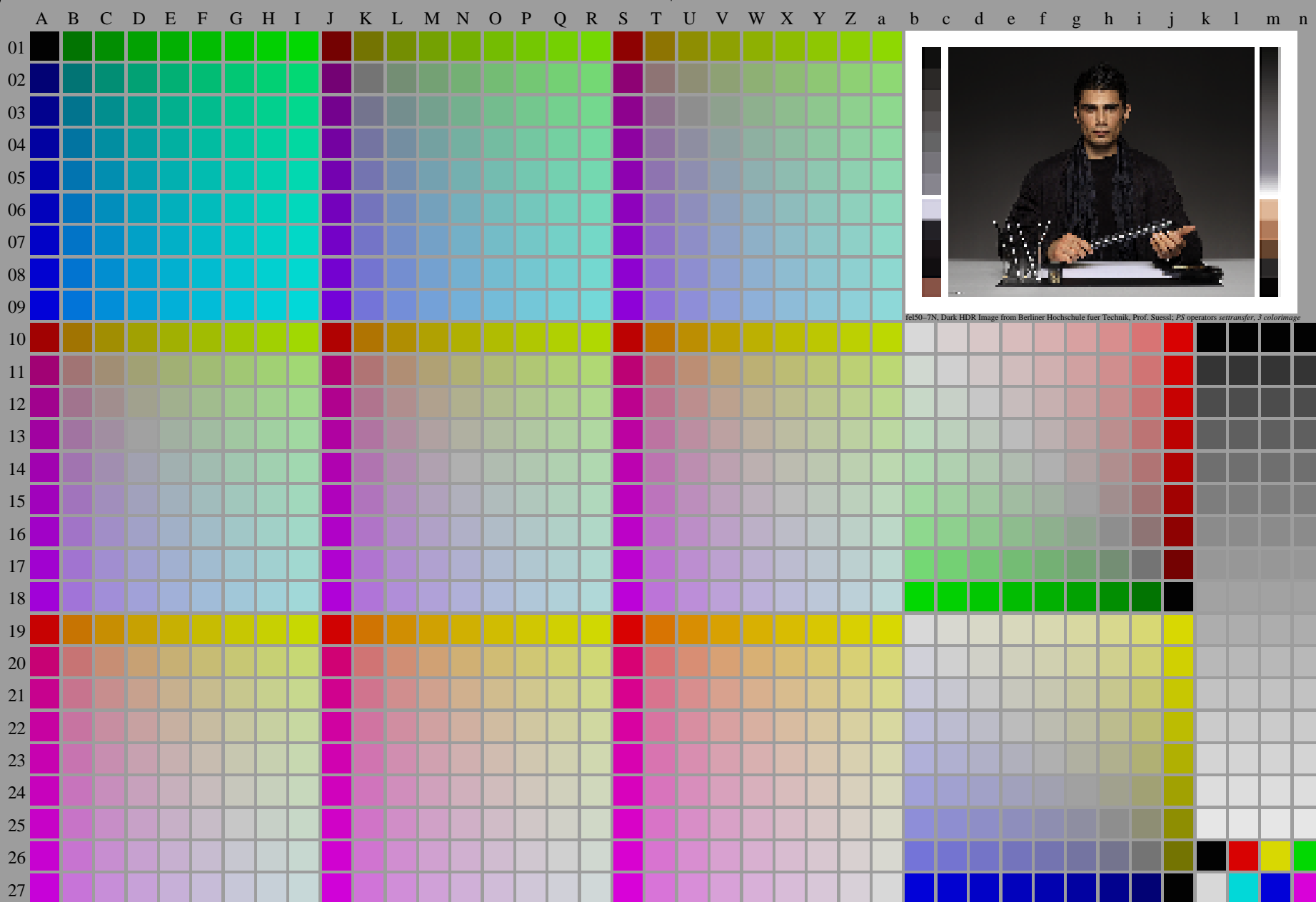
TUB-test chart fel5; fel5: Test chart ul_d09 with 40x27=1080 colours; 1MR, DH 000n/w/cmy0/rgb
Digital equidistant 9 or 16 step colour scales, D-HDR; $\gamma_R=0,9$
-> $rgb^*_d, 135-0$:

<http://farbe.li.tu-berlin.de/fel5/fel510fa.txt> /.ps; only vector graphic VG;
see separate images of this page: <http://farbe.li.tu-berlin.de/fel5/fel5.htm>



see similar files of the whole series: <http://farbe.li.tu-berlin.de/fel5.htm>
technical information: <http://farbe.li.tu-berlin.de/A/33872E.html>
or <http://standards.iso.org/iso/9241/306/ed-2/index.html>

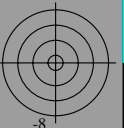
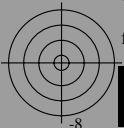
TUB registration: 20240301-fel5/fel510fa.txt /.ps
application for evaluation and measurement of display or print output



fel50-7N, Dark HDR Image from Berliner Hochschule fuer Technik, Prof. Suessli; PS operators settransfer, 3 colorimage

fel50-7N, Page 1/16, Test chart 2G with 40x27=1080 colours; digital equidistant 9 or 16 step colour scales; Colour data in column (A-n): $rgb^*(A_n)$, $colorm = 1$, $xchart = 6$, $pchart = 0$

TUB-test chart fel5; fel5: Test chart ul_d09 with 40x27=1080 colours; 1MR, DH 000n/w/cmy0/rgb
Digital equidistant 9 or 16 step colour scales, D-HDR; $\gamma_R=0,9$ $\rightarrow rgb^*_d, 136-0:$



<http://farbe.li.tu-berlin.de/fel5/fel510fa.txt> /.ps; only vector graphic VG;
see separate images of this page: <http://farbe.li.tu-berlin.de/fel5/fel5.htm>

see similar files of the whole serie: <http://farbe.li.tu-berlin.de/fels.htm>
technical information: <http://farbe.li.tu-berlin.de/A/33872E.html>
or <http://standards.iso.org/iso/9241/306/ed-2/index.html>



TUB registration: 20240301-fel5/fel510fa.txt /.ps
application for evaluation and measurement of display or print output

TUB material: code=rh4ta

fel50-7N, Page 1/16, Test chart 2G with 40x27=1080 colours; digital equidistant 9 or 16 step colour scales; Colour data in column (A-n): $rgb^*(A_n)$, $colorm = 1$, $xchart = 7$, $pchart = 0$

TUB-test chart fel5; fel5: Test chart ul_d09 with 40x27=1080 colours; 1MR, DH 000n/w/cmy0/rgb
Digital equidistant 9 or 16 step colour scales, D-HDR; $\gamma_R=0,9$ $\rightarrow rgb^*_d, 137-0:$