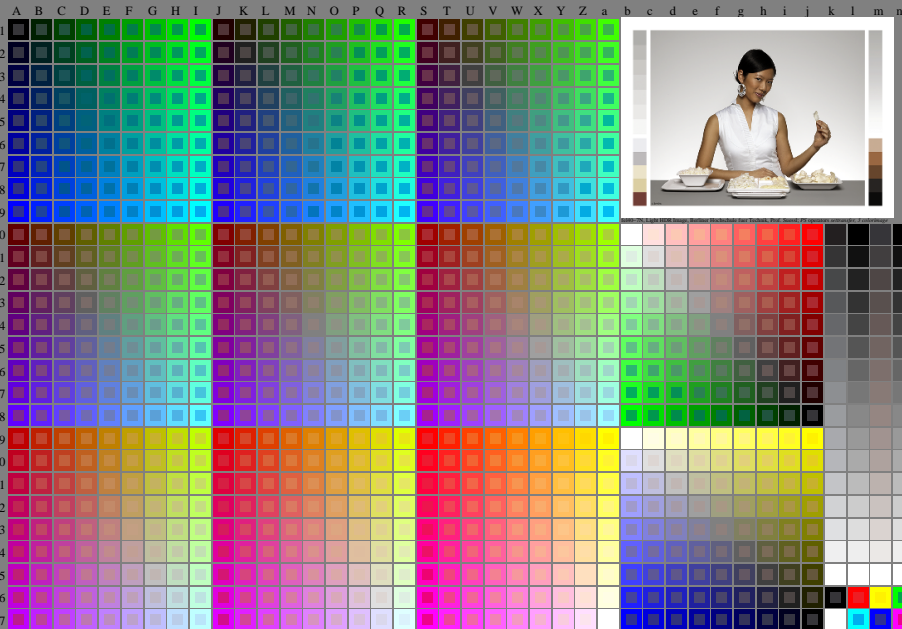


<http://farbe.li.tu-berlin.de/fel4/fel40n1.txt/ps>; only vector graphic VG; start output
see separate images of this page: <http://farbe.li.tu-berlin.de/fel4/fel4.htm>

see similar files of the whole serie: <http://farbe.li.tu-berlin.de/fel4.htm>
technical information: <http://farbe.li.tu-berlin.de/A33972.html>
or <http://www.rwth-aachen.de/2/index.html>



fel40-7N, Page 1/16, Test chart 2G with 40x27=1080 colours; digital equidistant 9 or 16 step colour scales; Colour data in column (A-n): $rgb + cmy0(A, j + k26_n27), 000n(k), w(l), nm0(m), www(n), colorn = 0, xchart = 0, pchart = 0$

TUB-test chart fel4; fel4: Test chart uh_d09 with 40x27=1080 colours; DH
Digital equidistant 9 or 16 step colour scales, L-HDR; $\gamma_R=0,9$

000n/w/cmy0/rgb
->rgb*_d, 030-0:

TUB registration: 20240301-fel4/fel40n1.txt/ps
application for evaluation and measurement of display or print output
TUB material: code=thd-fta