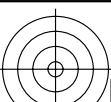


<http://farbe.li.tu-berlin.de/fel3/fel310fa.txt> /.ps; only vector graphic VG; start output
see separate images of this page: <http://farbe.li.tu-berlin.de/fel3/fel3.htm>

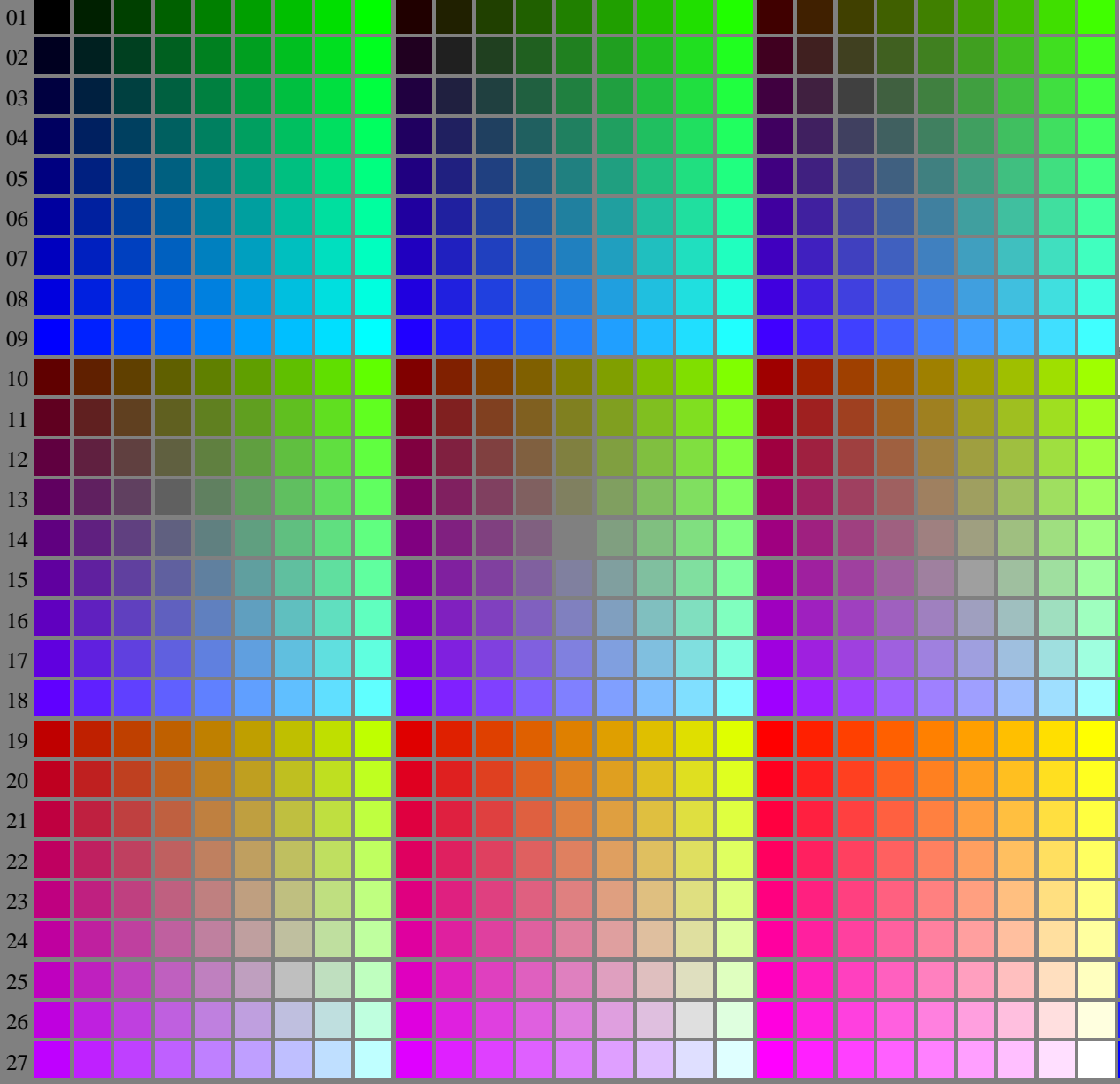


see similar files of the whole serie: <http://farbe.li.tu-berlin.de/fels.htm>
technical information: <http://farbe.li.tu-berlin.de/A/33872E.html>
or <http://standards.iso.org/iso/9241/306/ed-2/index.html>

TUB registration: 20240301-fel3/fel310fa.txt /.ps
application for evaluation and measurement of display or print output

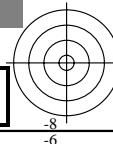
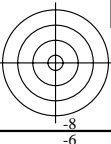
TUB material: code=rh4ta

A B C D E F G H I J K L M N O P Q R S T U V W X Y Z a b c d e f g h i j k l m n



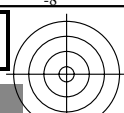
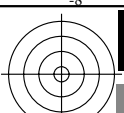
fel30-7N, Light HDR Image, Berliner Hochschule fuer Technik, Prof. Suesst; PS operators seltransfer, 3 colorimage

fel30-7N, Page 1/16, Test chart 2G with 40x27=1080 colours; digital equidistant 9 or 16 step colour scales; Colour data in column (A-n): $rgb^* (A_n)$, colorm = 1, xchart = 0, pchart = 0



TUB-test chart fel3; fel3: Test chart 2g_di with 40x27=1080 colours; 1MR, DH 000n/w/cmy0/rgb
Digital equidistant 9 or 16 step colour scales $\rightarrow rgb^*_d, 130-0:$

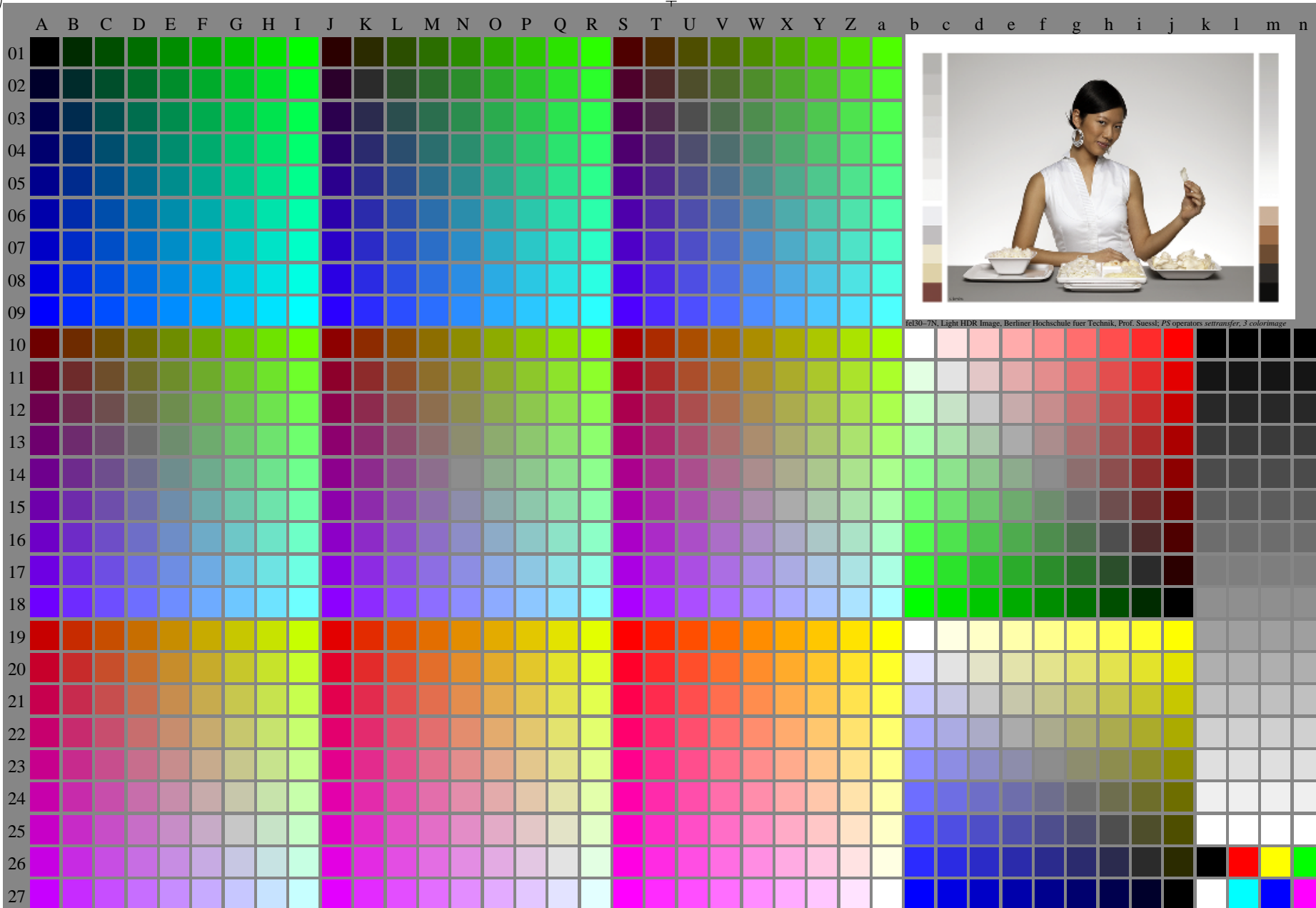
<http://farbe.li.tu-berlin.de/fel3/fel310fa.txt> /.ps; only vector graphic VG;
see separate images of this page: <http://farbe.li.tu-berlin.de/fel3/fel3.htm>



see similar files of the whole serie: <http://farbe.li.tu-berlin.de/fels.htm>
technical information: <http://farbe.li.tu-berlin.de/A/33872E.html>
or <http://standards.iso.org/iso/9241/306/ed-2/index.html>

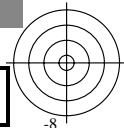
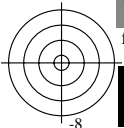
TUB registration: 20240301-fel3/fel310fa.txt /.ps
application for evaluation and measurement of display or print output

TUB material: code=rh4ta

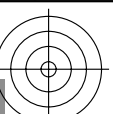
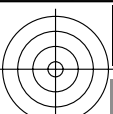


fel30-7N, Page 1/16, Test chart 2G with 40x27=1080 colours; digital equidistant 9 or 16 step colour scales; Colour data in column (A-n): $rgb^* (A_n)$, $colorm = 1$, $xchart = 1$, $pchart = 0$

TUB-test chart fel3; fel3: Test chart 2g_di with 40x27=1080 colours; 1MR, DH 000n/w/cmy0/rgb
Digital equidistant 9 or 16 step colour scales $\rightarrow rgb^*_d, 131-0:$



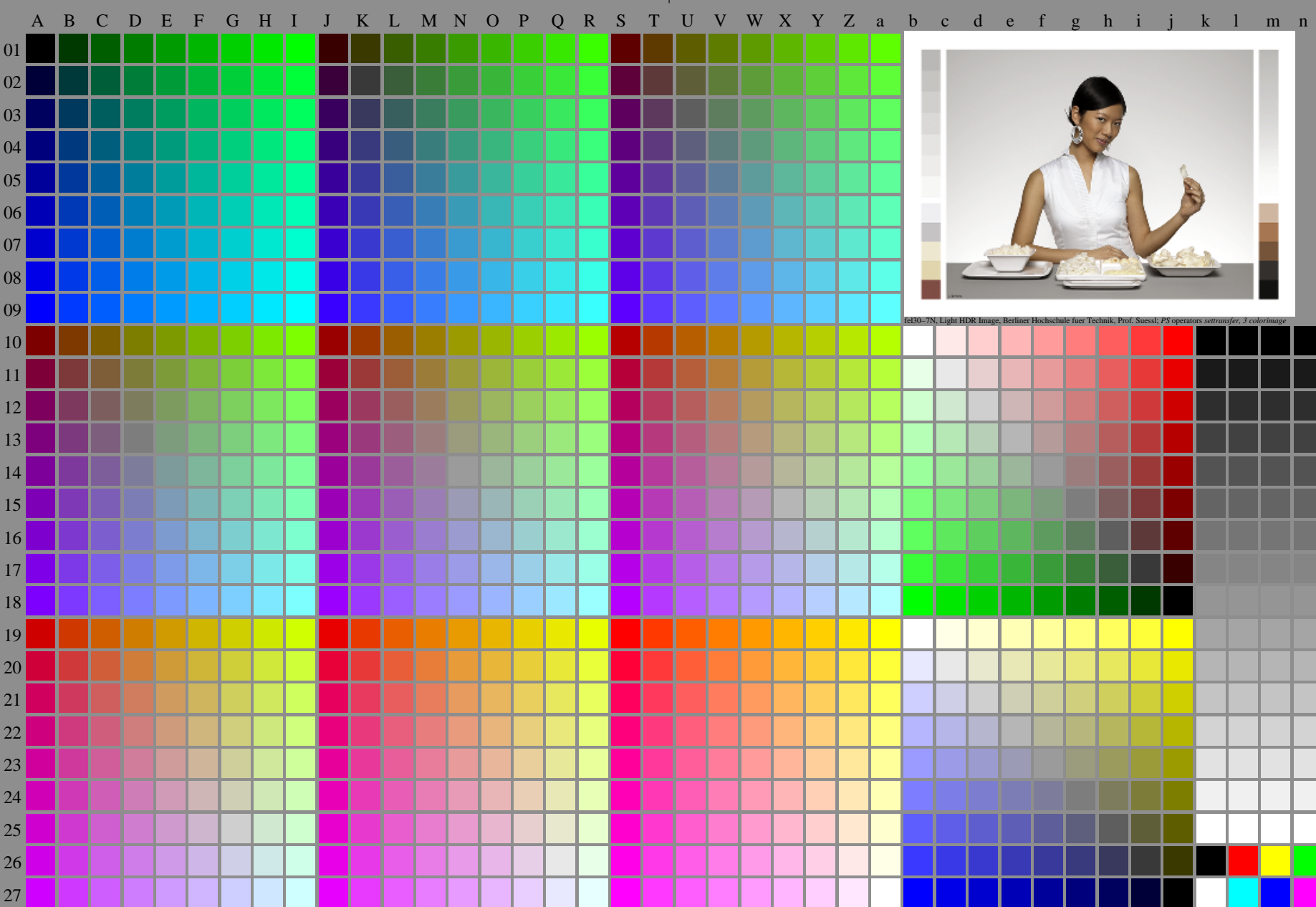
<http://farbe.li.tu-berlin.de/fel3/fel310fa.txt> /.ps; only vector graphic VG;
see separate images of this page: <http://farbe.li.tu-berlin.de/fel3/fel3.htm>



see similar files of the whole series: <http://farbe.li.tu-berlin.de/fels.htm>
technical information: <http://farbe.li.tu-berlin.de/A/33872E.html>
or <http://standards.iso.org/iso/9241/306/ed-2/index.html>

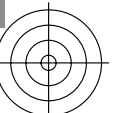
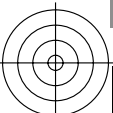
TUB registration: 20240301-fel3/fel310fa.txt /.ps
application for evaluation and measurement of display or print output

TUB material: code=rh4ta

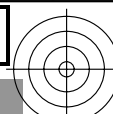
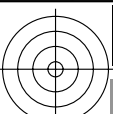


fel30-7N, Page 1/16, Test chart 2G with 40x27=1080 colours; digital equidistant 9 or 16 step colour scales; Colour data in column (A-n): $rgb^*_{d, 132-0}$, colorm = 1, xchart = 2, pchart = 0

TUB-test chart fel3; fel3: Test chart 2g_di with 40x27=1080 colours; 1MR, DH 000n/w/cmy0/rgb
Digital equidistant 9 or 16 step colour scales $\rightarrow rgb^*_{d, 132-0}$



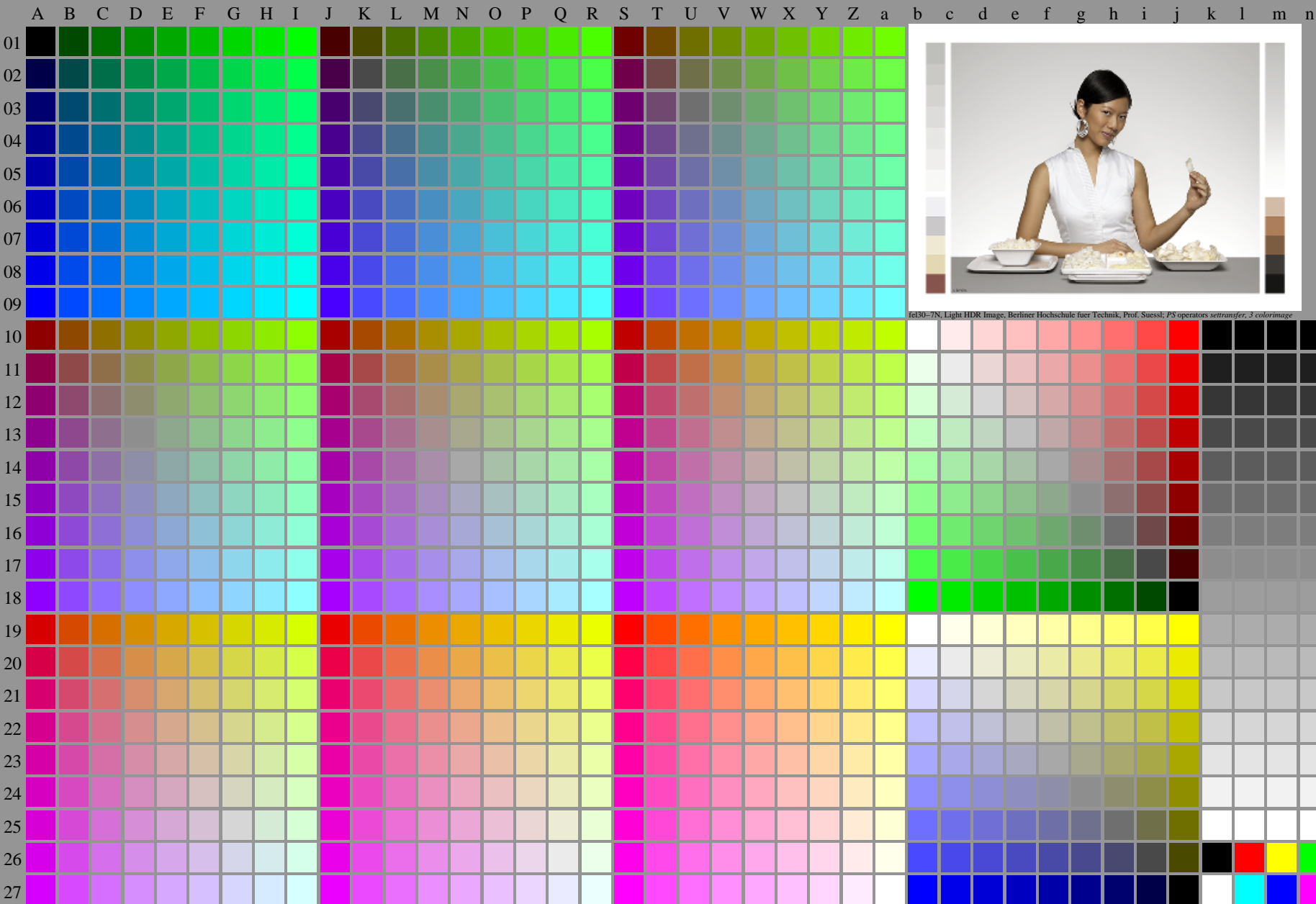
<http://farbe.li.tu-berlin.de/fel3/fel310fa.txt> /.ps; only vector graphic VG;
see separate images of this page: <http://farbe.li.tu-berlin.de/fel3/fel3.htm>



see similar files of the whole serie: <http://farbe.li.tu-berlin.de/fels.htm>
technical information: <http://farbe.li.tu-berlin.de/A/33872E.html>
or <http://standards.iso.org/iso/9241/306/ed-2/index.html>

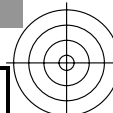
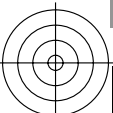
TUB registration: 20240301-fel3/fel310fa.txt /.ps
application for evaluation and measurement of display or print output

TUB material: code=rh4ta

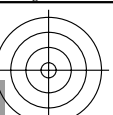
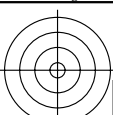


fel30-7N, Page 1/16, Test chart 2G with 40x27=1080 colours; digital equidistant 9 or 16 step colour scales; Colour data in column (A-n): rgb^*_{d} (A_n), colorm = 1, xchart = 3, pchart = 0

TUB-test chart fel3; fel3: Test chart 2g_di with 40x27=1080 colours; 1MR, DH 000n/w/cmy0/rgb
Digital equidistant 9 or 16 step colour scales $\rightarrow rgb^*_{d}$, 133-0:



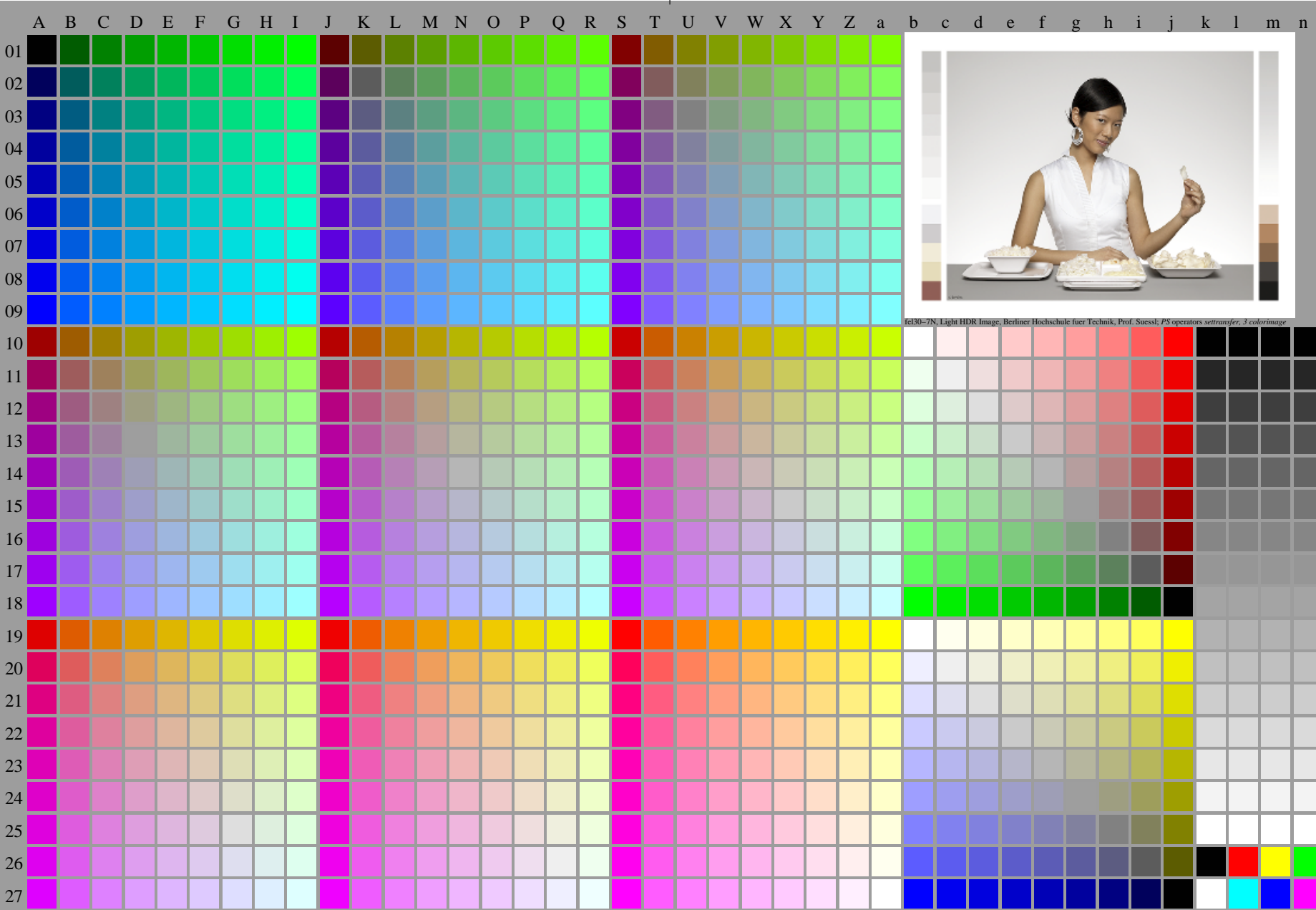
<http://farbe.li.tu-berlin.de/fel3/fel310fa.txt> /.ps; only vector graphic VG;
see separate images of this page: <http://farbe.li.tu-berlin.de/fel3/fel3.htm>



see similar files of the whole series: <http://farbe.li.tu-berlin.de/fels.htm>
technical information: <http://farbe.li.tu-berlin.de/A/33872E.html>
or <http://standards.iso.org/iso/9241/306/ed-2/index.html>

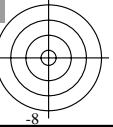
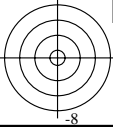
TUB registration: 20240301-fel3/fel310fa.txt /.ps
application for evaluation and measurement of display or print output

TUB material: code=rh4ta

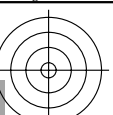
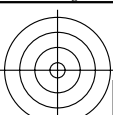


fel30-7N, Page 1/16, Test chart 2G with 40x27=1080 colours; digital equidistant 9 or 16 step colour scales; Colour data in column (A-n): $rgb^*_{d, 134-0}$, colormap = 1, xchart = 4, pchart = 0

TUB-test chart fel3; fel3: Test chart 2g_di with 40x27=1080 colours; 1MR, DH 000n/w/cmy0/rgb
Digital equidistant 9 or 16 step colour scales $\rightarrow rgb^*_{d, 134-0}$



<http://farbe.li.tu-berlin.de/fel3/fel310fa.txt> /.ps; only vector graphic VG;
see separate images of this page: <http://farbe.li.tu-berlin.de/fel3/fel3.htm>



see similar files of the whole serie: <http://farbe.li.tu-berlin.de/fels.htm>
technical information: <http://farbe.li.tu-berlin.de/A/33872E.html>
or <http://standards.iso.org/iso/9241/306/ed-2/index.html>

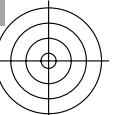
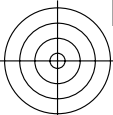
TUB registration: 20240301-fel3/fel310fa.txt /.ps
application for evaluation and measurement of display or print output

TUB material: code=rh4ta

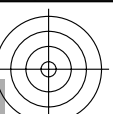
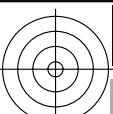


fel30-7N, Page 1/16, Test chart 2G with 40x27=1080 colours; digital equidistant 9 or 16 step colour scales; Colour data in column (A-n): $rgb^* (A_n)$, $colorm = 1$, $xchart = 5$, $pchart = 0$

TUB-test chart fel3; fel3: Test chart 2g_di with 40x27=1080 colours; 1MR, DH 000n/w/cmy0/rgb
Digital equidistant 9 or 16 step colour scales $\rightarrow rgb^*_d, 135-0$



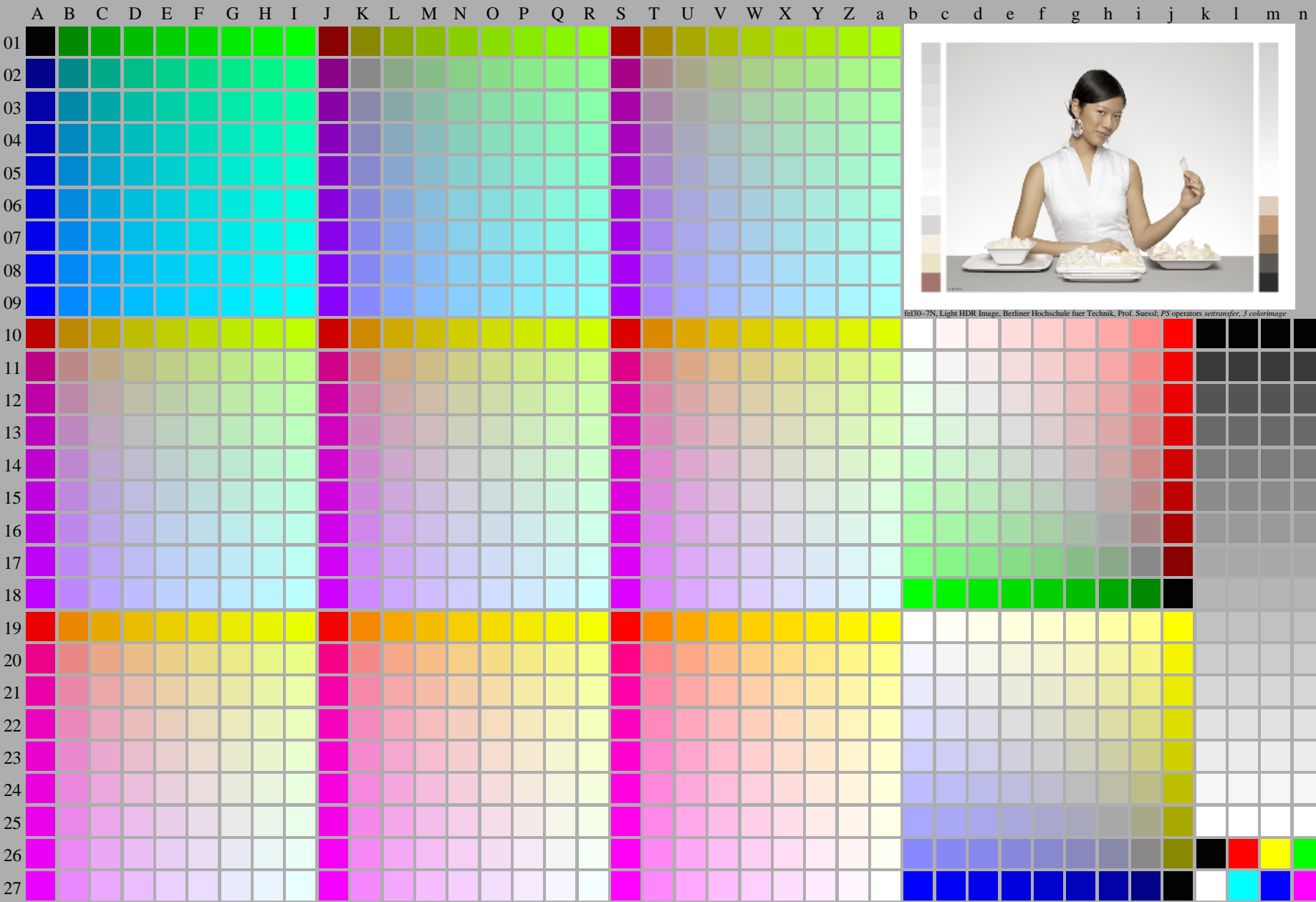
<http://farbe.li.tu-berlin.de/fel3/fel310fa.txt> /.ps; only vector graphic VG;
see separate images of this page: <http://farbe.li.tu-berlin.de/fel3/fel3.htm>



see similar files of the whole serie: <http://farbe.li.tu-berlin.de/fels.htm>
technical information: <http://farbe.li.tu-berlin.de/A/33872E.html>
or <http://standards.iso.org/iso/9241/306/ed-2/index.html>

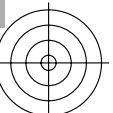
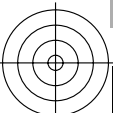
TUB registration: 20240301-fel3/fel310fa.txt /.ps
application for evaluation and measurement of display or print output

TUB material: code=rh4ta

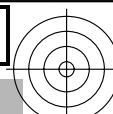
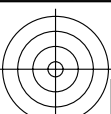


fel30-7N, Page 1/16, Test chart 2G with 40x27=1080 colours; digital equidistant 9 or 16 step colour scales; Colour data in column (A-n): $rgb^*_d(A_n)$, $colorm = 1$, $xchart = 6$, $pchart = 0$

TUB-test chart fel3; fel3: Test chart 2g_di with 40x27=1080 colours; 1MR, DH 000n/w/cmy0/rgb
Digital equidistant 9 or 16 step colour scales $\rightarrow rgb^*_d, 136-0$



<http://farbe.li.tu-berlin.de/fel3/fel310fa.txt> /.ps; only vector graphic VG;
see separate images of this page: <http://farbe.li.tu-berlin.de/fel3/fel3.htm>

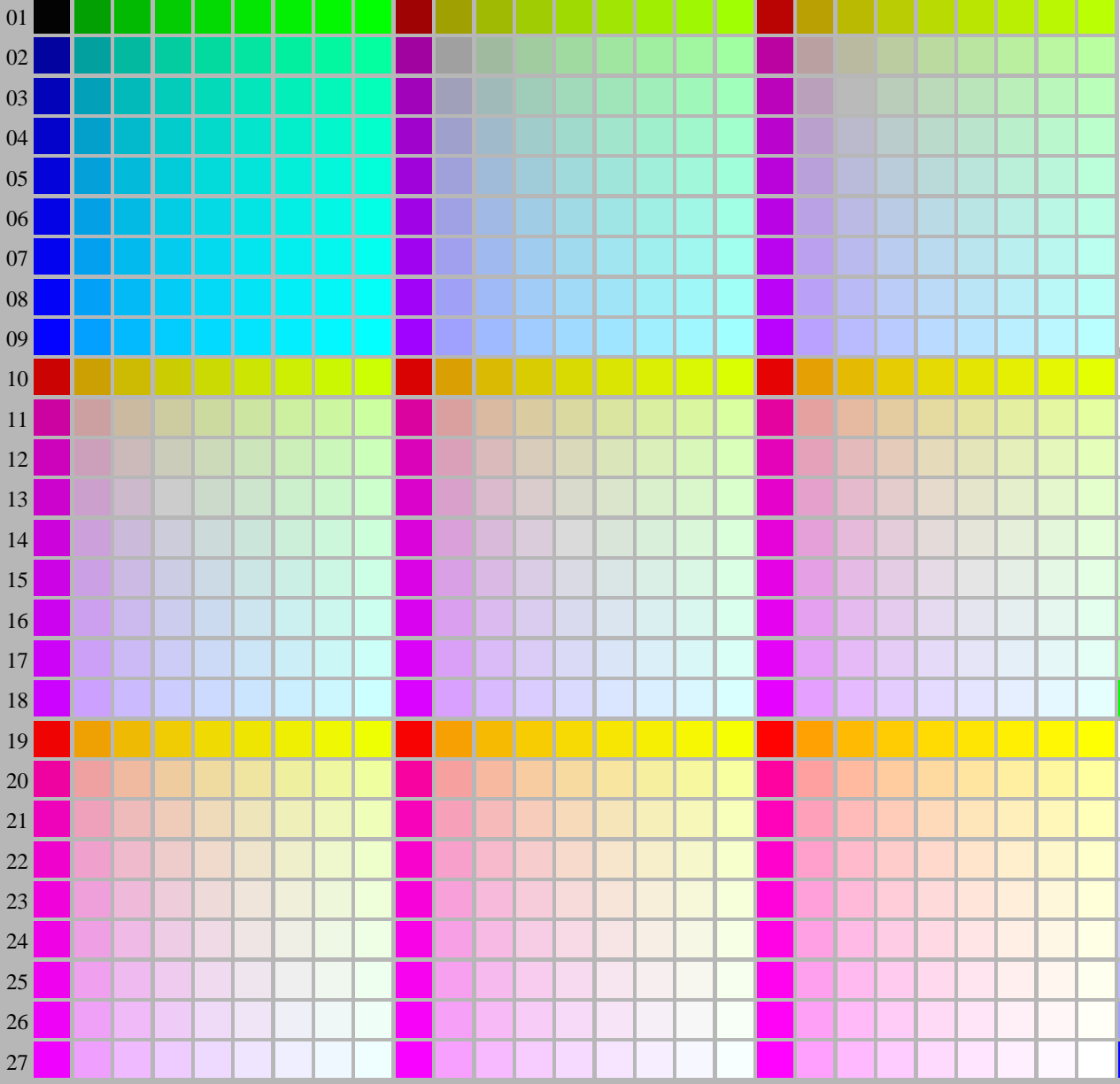


see similar files of the whole serie: <http://farbe.li.tu-berlin.de/fels.htm>
technical information: <http://farbe.li.tu-berlin.de/A/33872E.html>
or <http://standards.iso.org/iso/9241/306/ed-2/index.html>

TUB registration: 20240301-fel3/fel310fa.txt /.ps
application for evaluation and measurement of display or print output

TUB material: code=rh4ta

A B C D E F G H I J K L M N O P Q R S T U V W X Y Z a b c d e f g h i j k l m n



fel30-7N, Light HDR Image, Berliner Hochschule fuer Technik, Prof. Suessli; PS operators settransfer, 3 colorimage

fel30-7N, Page 1/16, Test chart 2G with 40x27=1080 colours; digital equidistant 9 or 16 step colour scales; Colour data in column (A-n): $rgb^*_{d,1370}(A_n)$, colorm = 1, xchart = 7, pchart = 0

TUB-test chart fel3; fel3: Test chart 2g_di with 40x27=1080 colours; 1MR, DH 000n/w/cmy0/rgb
Digital equidistant 9 or 16 step colour scales $\rightarrow rgb^*_{d,1370}$

