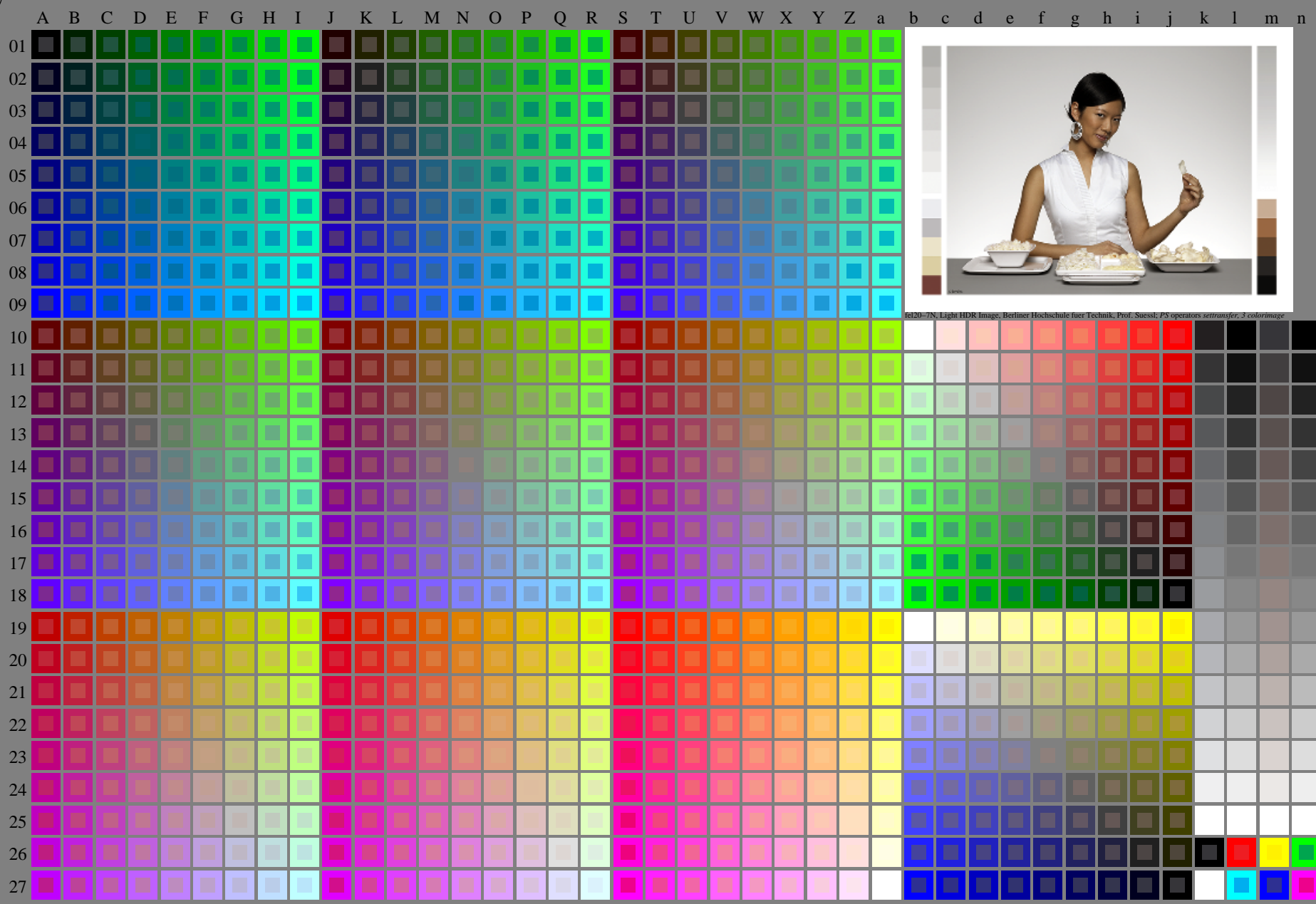


<http://farbe.li.tu-berlin.de/fel2/fel2l0na.txt> / .ps; only vector graphic VG; start output see separate images of this page: <http://farbe.li.tu-berlin.de/fel2/fel2.htm>

see similar files of the whole series: <http://farbe.li.tu-berlin.de/fel2/fel2.htm>
technical information: <http://farbe.li.tu-berlin.de/A/33872E.html>
or <http://standards.iso.org/iso/9241/506/ed-2/index.html>



fel20-7N, Light HDR Image, Berliner Hochschule fuer Technik, Prof. Süssel; PS operators settransfer, 3 colorimage

fel20-7N, Page 1/16, Test chart 2G with 40x27=1080 colours; digital equidistant 9 or 16 step colour scales; Colour data in column (A-n): rgb + cmy0 (A_j + k26_n27), 000n (k), w (l), nnn0 (m), www (n), colorm = 0, xchart = 0, pchart = 0

TUB-test chart fel2; fel2: Test chart uh_d10 with 40x27=1080 colours; DH Digital equidistant 9 or 16 step colour scales, L-HDR; $\gamma_R=1,0$

000n/w/cmy0/rgb
->rgb*d, 030-0:

TUB registration: 20240301-fel2/fel2l0na.txt / .ps
application for evaluation and measurement of display or print output
TUB material: code=rh4ta

<http://farbe.li.tu-berlin.de/fel2/fel210na.txt> / .ps; only vector graphic VG; start output
 see separate images of this page: <http://farbe.li.tu-berlin.de/fel2/fel2.htm>

see similar files of the whole series: <http://farbe.li.tu-berlin.de/fels.htm>
 technical information: <http://farbe.li.tu-berlin.de/A/33872E.html>
 or <http://standards.iso.org/iso/9241/306/ed-2/index.html>

TUB registration: 20240301-fel2/fel210na.txt / ps
 application for evaluation and measurement of display or print output
 TUB material: code=rhatha

i	LAB*ref	l*out	LAB*out	LAB*out/c-ref	ΔE^*	Start output S1
1	0.0	0.0	0.0	0.0	0.0	0.01
2	6.36	0.0	0.0	0.0	0.0	0.01
3	12.72	0.0	0.13	12.72	0.0	0.01
4	19.08	0.0	0.2	19.08	0.0	0.01
5	25.44	0.0	0.27	25.44	0.0	0.01
6	31.8	0.0	0.33	31.8	0.0	0.01
7	38.16	0.0	0.4	38.16	0.0	0.01
8	44.52	0.0	0.47	44.52	0.0	0.01
9	50.89	0.0	0.53	50.89	0.0	0.01
10	57.25	0.0	0.6	57.25	0.0	0.01
11	63.61	0.0	0.67	63.61	0.0	0.01
12	69.97	0.0	0.73	69.97	0.0	0.01
13	76.33	0.0	0.8	76.33	0.0	0.01
14	82.69	0.0	0.87	82.69	0.0	0.01
15	89.05	0.0	0.93	89.05	0.0	0.01
16	95.41	0.0	1.0	95.41	0.0	0.01
17	0.0	0.0	0.0	0.0	0.0	0.01
18	23.85	0.0	0.25	23.85	0.0	0.01
19	47.71	0.0	0.5	47.71	0.0	0.01
20	71.56	0.0	0.75	71.56	0.0	0.01
21	95.41	0.0	1.0	95.41	0.0	0.01

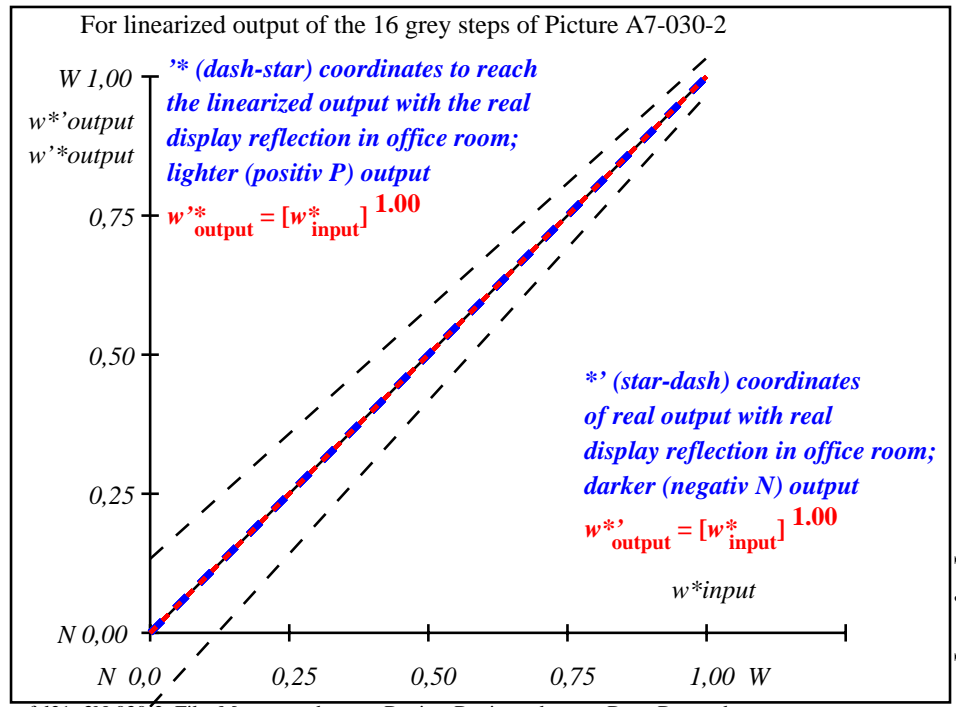
Specification according to ISO/IEC 15775 Annex G and DIN 33866-1 Annex G

Mean lightness difference (16 steps)
 $\Delta E^*_{CIELAB} = 0.0$

Mean lightness difference (5 steps)
 $\Delta L^*_{CIELAB} = 0.0$

Mean colour reproduction index: $R^*_{ab,m} = 100$

fel20-3N-030-2: File: Measure unknown; Device: Device unknown; Date: Date unknown



fel21-3N-030-2: File: Measure unknown; Device: Device unknown; Date: Date unknown

$L^*/Y^*_{intended}$ (absolute)	0.0/0.0	6.4/0.7	12.7/1.5	19.1/2.8	25.4/4.6	31.8/7.0	38.2/10.2	44.5/14.2	50.9/19.2	57.2/25.2	63.6/32.3	70.0/40.7	76.3/50.4	82.7/61.6	89.0/74.3	95.4/88.6
$w^* w^* w^*$ setrgb gp=1.00																
No. and Hex code	00;F	01;E	02;D	03;C	04;B	05;A	06;9	07;8	08;7	09;6	10;5	11;4	12;3	13;2	14;1	15;0
$w^* = L^*_{CIELAB, r}$ (relative)																
$w^*_{intended}$	0,000	0,067	0,133	0,200	0,267	0,333	0,400	0,467	0,533	0,600	0,667	0,733	0,800	0,867	0,933	1,000
w^*_{out}	0,0	0,067	0,133	0,2	0,267	0,333	0,4	0,467	0,533	0,6	0,667	0,733	0,8	0,867	0,933	1,0

fel20-7N-030-2: 16 visual equidistant L^* -grey steps; PS operator: $w^* w^* w^*$ setrgbcolor

TUB-test chart fel2; fel2: In-output relation according to ISO 9241-306; DH
 Viewing Y contrast $Y_W:Y_N=88,9:0,31$; Y_N range 0,0 to <0,46, L-HDR; $\gamma_R=1,0$

000n/w/cmy0/rgb
 ->rgb*d, 030-2: