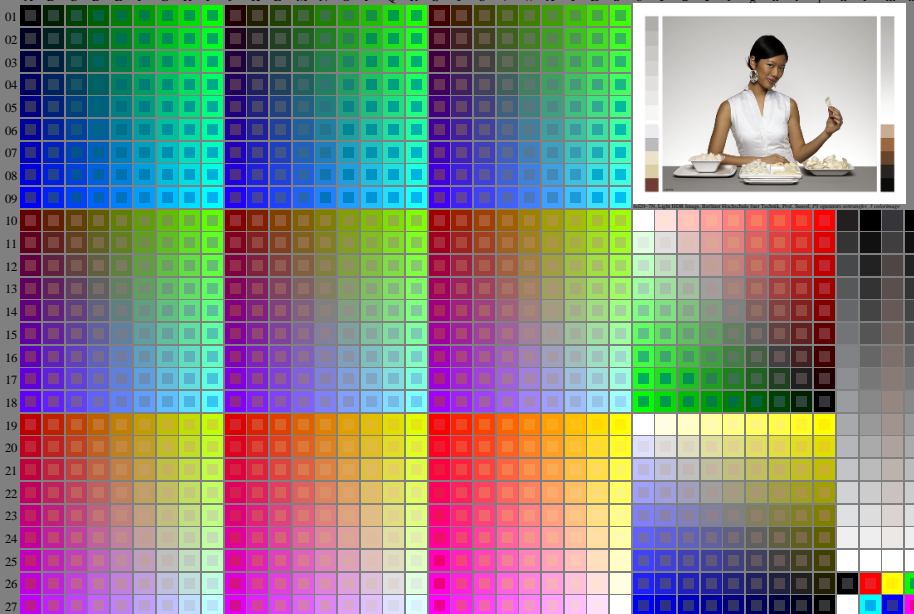


<http://farbe.li.tu-berlin.de/fel2/fel20n1.txt/ps>; only vector graphic VG; start output
see separate images of this page: <http://farbe.li.tu-berlin.de/fel2/fel2.htm>

see similar files of the whole serie: <http://farbe.li.tu-berlin.de/fel2.htm>
technical information: <http://farbe.li.tu-berlin.de/A339722.html>
or <http://www.fraunhofer.org/109241/5896ed-2/index.html>

TUB registration: 20240301-fel2/fel20n1.txt/ps
application for evaluation and measurement of display or print output
TUB material: code=thd-fta

A B C D E F G H I J K L M N O P Q R S T U V W X Y Z a b c d e f g h i j k l m n



fel20-7N, Page 1/16, Test chart 2G with 40x27=1080 colours; digital equidistant 9 or 16 step colour scales; Colour data in column (A-n): $rgb + cmy0(A, j + k26_n27), 000n(k), w(l), nm0(m), www(n), colorn = 0, xchart = 0, pchart = 0$

TUB-test chart fel2; fel2: Test chart uh_d10 with 40x27=1080 colours; DH
Digital equidistant 9 or 16 step colour scales, L-HDR; $\gamma_R=1,0$

000n/w/cmy0/rgb
->rgb*_d_030-0: