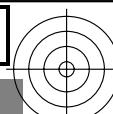
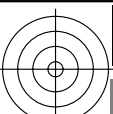


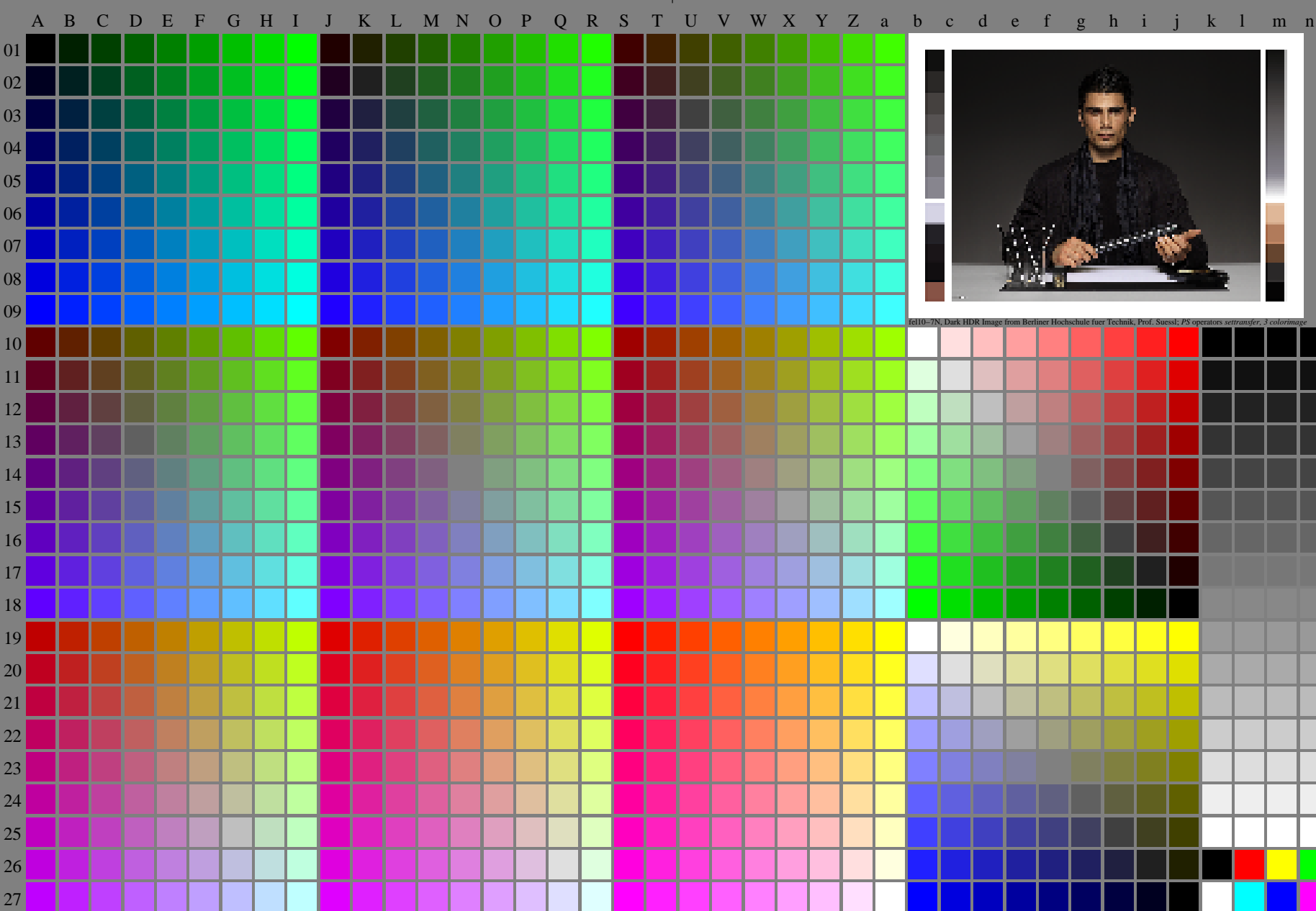
<http://farbe.li.tu-berlin.de/fel1/fel110fa.txt> /.ps; only vector graphic VG; start output
see separate images of this page: <http://farbe.li.tu-berlin.de/fel1/fel1.htm>



see similar files of the whole serie: <http://farbe.li.tu-berlin.de/fels.htm>
technical information: <http://farbe.li.tu-berlin.de/A/33872E.html>
or <http://standards.iso.org/iso/9241/306/ed-2/index.html>

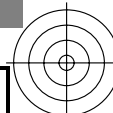
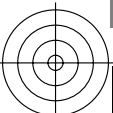
TUB registration: 20240301-fel1/fel110fa.txt /.ps
application for evaluation and measurement of display or print output

TUB material: code=rh4ta

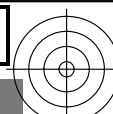
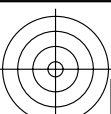


fel10-7N, Page 1/16, Test chart 2G with 40x27=1080 colours; digital equidistant 9 or 16 step colour scales; Colour data in column (A-n): $rgb^* (A_n)$, colorm = 1, xchart = 0, pchart = 0

TUB-test chart fel1; fel1: Test chart wl_d10 with 40x27=1080 colours; 1MR, DH 000n/w/cmy0/rgb
Digital equidistant 9 or 16 step colour scales, D-HDR; $\gamma_R=1,0$
-> $rgb^*_d, 130-0$



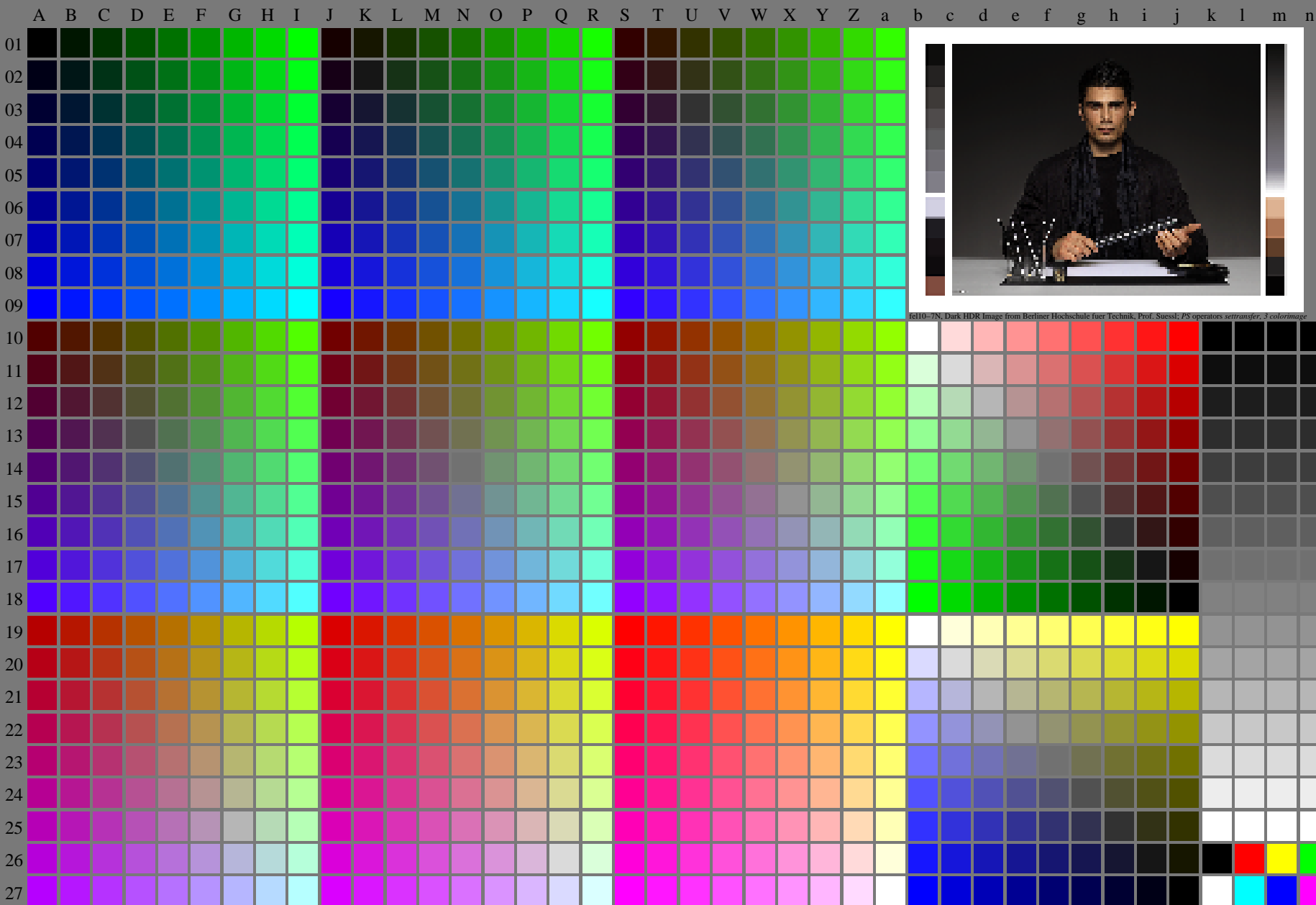
<http://farbe.li.tu-berlin.de/fel1/fel110fa.txt> /.ps; only vector graphic VG;
see separate images of this page: <http://farbe.li.tu-berlin.de/fel1/fel1.htm>



see similar files of the whole serie: <http://farbe.li.tu-berlin.de/fels.htm>
technical information: <http://farbe.li.tu-berlin.de/A/33872E.html>
or <http://standards.iso.org/iso/9241/306/ed-2/index.html>

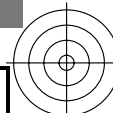
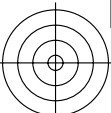
TUB registration: 20240301-fel1/fel110fa.txt /.ps
application for evaluation and measurement of display or print output

TUB material: code=rh4ta

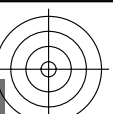
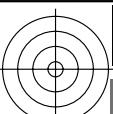


fel10-7N, Page 1/16, Test chart 2G with 40x27=1080 colours; digital equidistant 9 or 16 step colour scales; Colour data in column (A-n): $rgb^* (A_n)$, colorm = 1, xchart = 8, pchart = 0

TUB-test chart fel1; fel1: Test chart wl_d10 with 40x27=1080 colours; 1MR, DH 000n/w/cmy0/rgb
Digital equidistant 9 or 16 step colour scales, D-HDR; $\gamma_R=1,0$ $\rightarrow rgb^*_d, 130-0:$



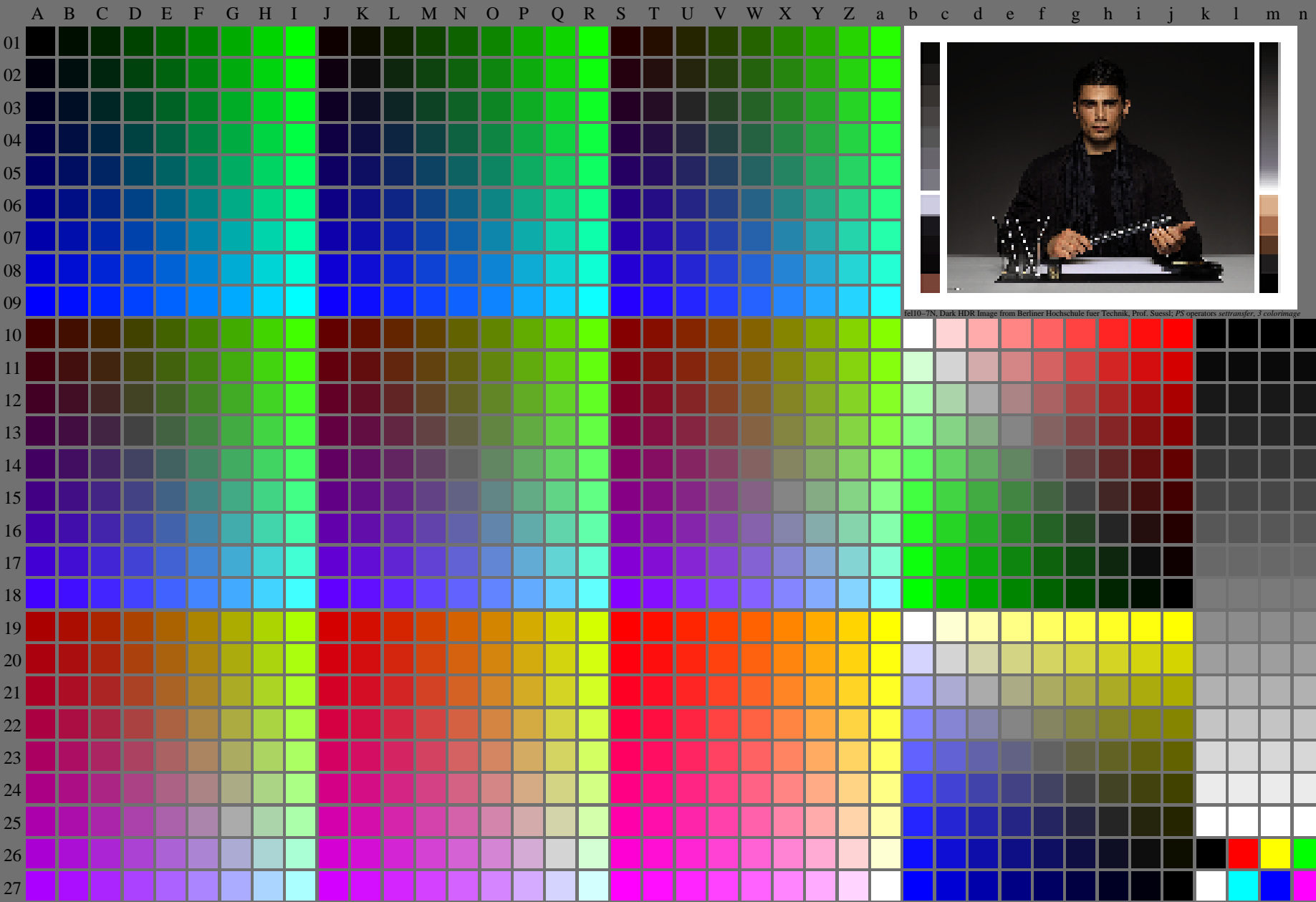
<http://farbe.li.tu-berlin.de/fel1/fel110fa.txt> /.ps; only vector graphic VG;
see separate images of this page: <http://farbe.li.tu-berlin.de/fel1/fel1.htm>



see similar files of the whole serie: <http://farbe.li.tu-berlin.de/fels.htm>
technical information: <http://farbe.li.tu-berlin.de/A/33872E.html>
or <http://standards.iso.org/iso/9241/306/ed-2/index.html>

TUB registration: 20240301-fel1/fel110fa.txt /.ps
application for evaluation and measurement of display or print output

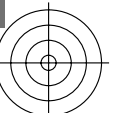
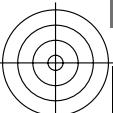
TUB material: code=rh4ta



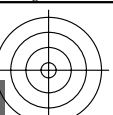
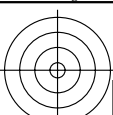
fel10-7N, Dark HDR Image from Berliner Hochschule fuer Technik, Prof. Suessl; PS operators settransfer_3 colorImage

fel10-7N, Page 1/16, Test chart 2G with 40x27=1080 colours; digital equidistant 9 or 16 step colour scales; Colour data in column (A-n): $rgb^* (A_n)$, colorm = 1, xchart = 16, pchart = 0

TUB-test chart fel1; fel1: Test chart wl_d10 with 40x27=1080 colours; 1MR, DH 000n/w/cmy0/rgb
Digital equidistant 9 or 16 step colour scales, D-HDR; $\gamma_R=1,0$ $\rightarrow rgb^*_d, 130-0$



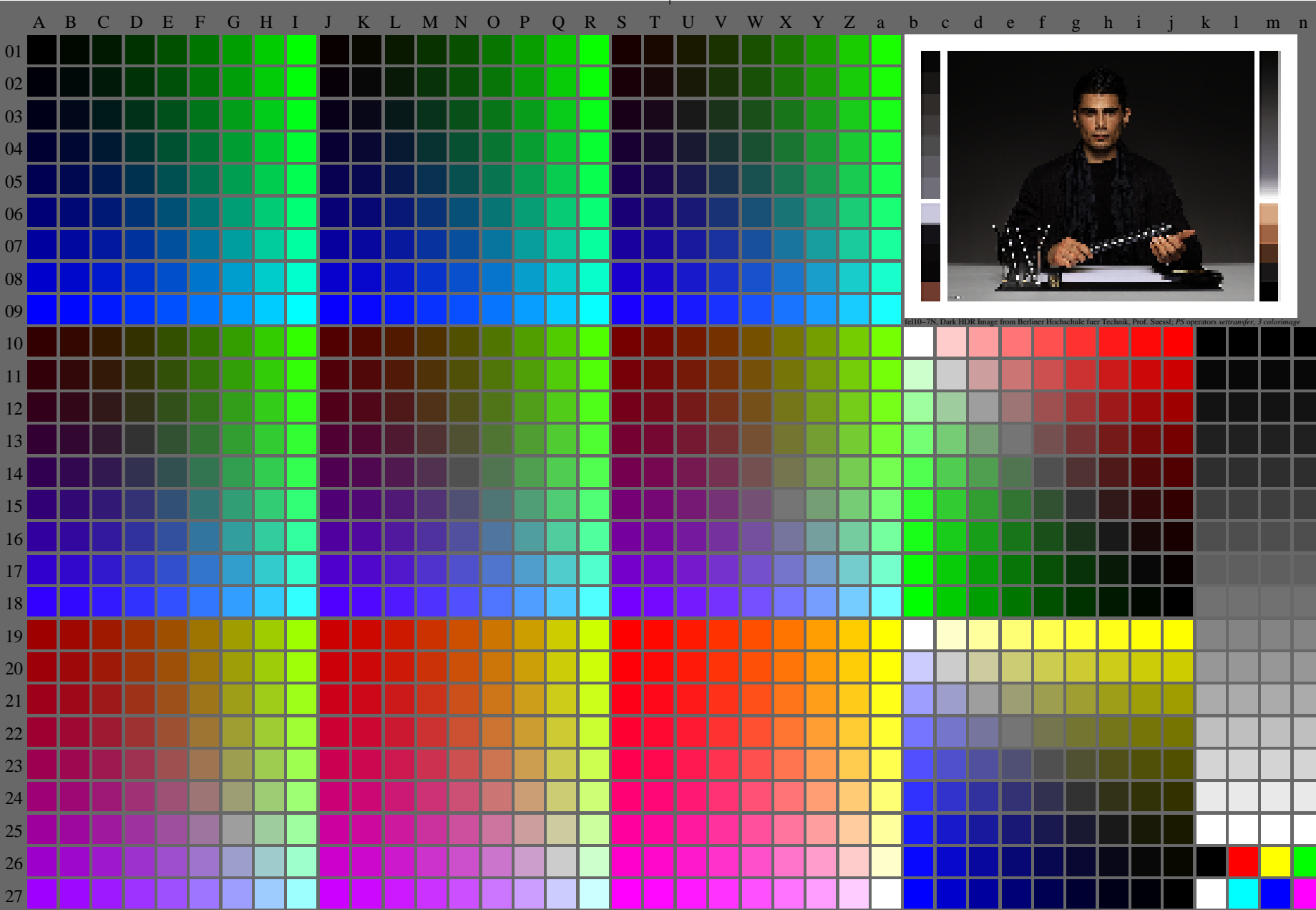
<http://farbe.li.tu-berlin.de/fel1/fel110fa.txt> /.ps; only vector graphic VG;
see separate images of this page: <http://farbe.li.tu-berlin.de/fel1/fel1.htm>



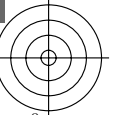
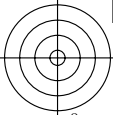
see similar files of the whole serie: <http://farbe.li.tu-berlin.de/fels.htm>
technical information: <http://farbe.li.tu-berlin.de/A/33872E.html>
or <http://standards.iso.org/iso/9241/306/ed-2/index.html>

TUB registration: 20240301-fel1/fel110fa.txt /.ps
application for evaluation and measurement of display or print output

TUB material: code=rh4ta



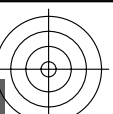
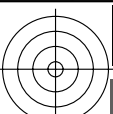
fel10-7N, Page 1/16, Test chart 2G with 40x27=1080 colours; digital equidistant 9 or 16 step colour scales; Colour data in column (A-n): $rgb^* (A_n)$, colorm = 1, xchart = 24, pchart = 0



TUB-test chart fel1; fel1: Test chart wl_d10 with 40x27=1080 colours; 1MR, DH 000n/w/cmy0/rgb
Digital equidistant 9 or 16 step colour scales, D-HDR; $\gamma_R=1,0$ $\rightarrow rgb^*_d, 130:0$

i=13240

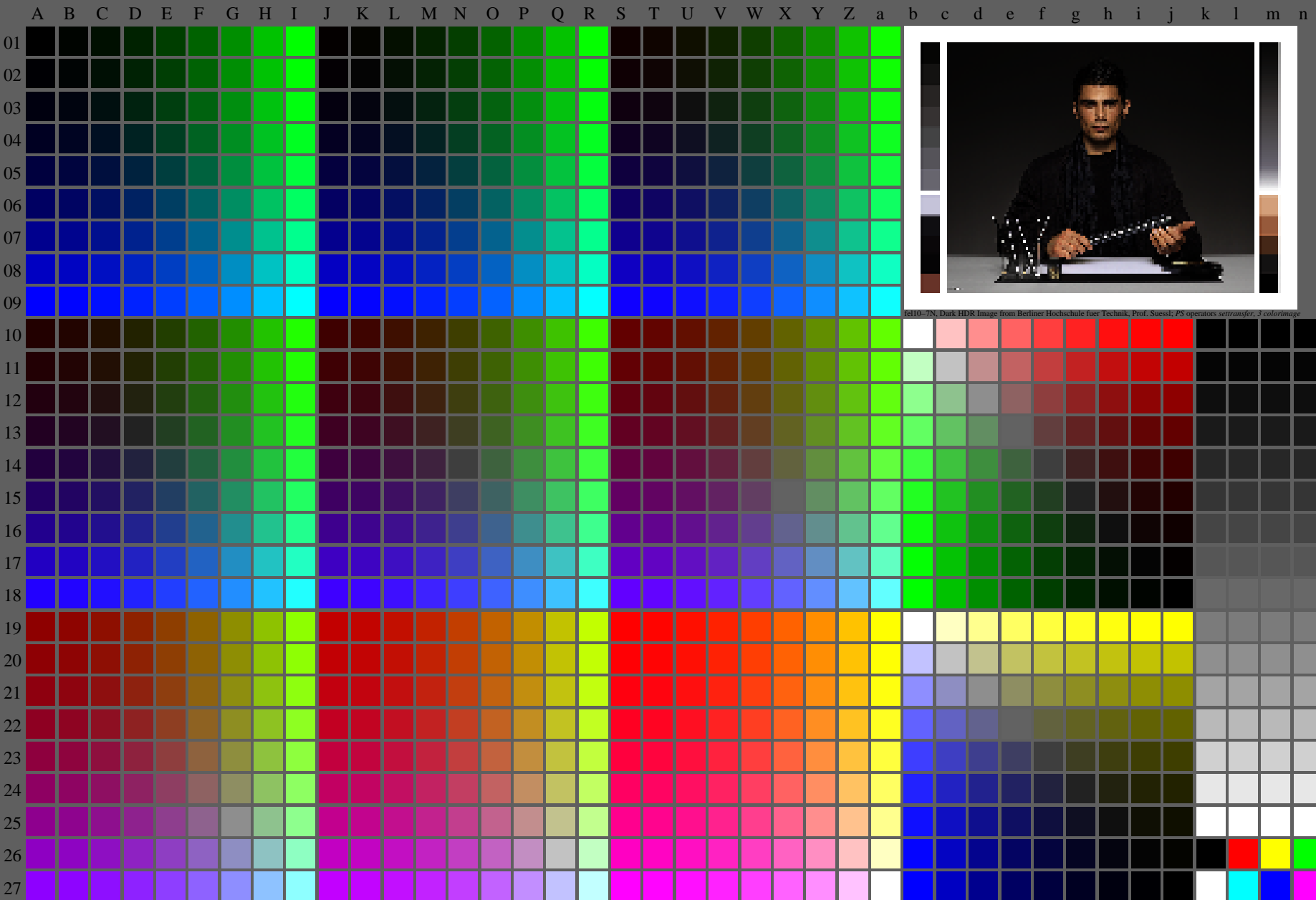
<http://farbe.li.tu-berlin.de/fel1/fel110fa.txt> /.ps; only vector graphic VG;
see separate images of this page: <http://farbe.li.tu-berlin.de/fel1/fel1.htm>



see similar files of the whole serie: <http://farbe.li.tu-berlin.de/fels.htm>
technical information: <http://farbe.li.tu-berlin.de/A/33872E.html>
or <http://standards.iso.org/iso/9241/306/ed-2/index.html>

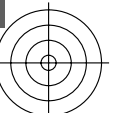
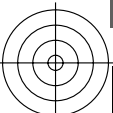
TUB registration: 20240301-fel1/fel110fa.txt /.ps
application for evaluation and measurement of display or print output

TUB material: code=rh4ta



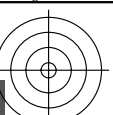
fel10-7N, Page 1/16, Test chart 2G with 40x27=1080 colours; digital equidistant 9 or 16 step colour scales; Colour data in column (A-n): $rgb^* (A_n)$, colorm = 1, xchart = 32, pchart = 0

TUB-test chart fel1; fel1: Test chart wl_d10 with 40x27=1080 colours; 1MR, DH 000n/w/cmy0/rgb
Digital equidistant 9 or 16 step colour scales, D-HDR; $\gamma_R=1,0$ $\rightarrow rgb^*_d, 130:0$



i=13320

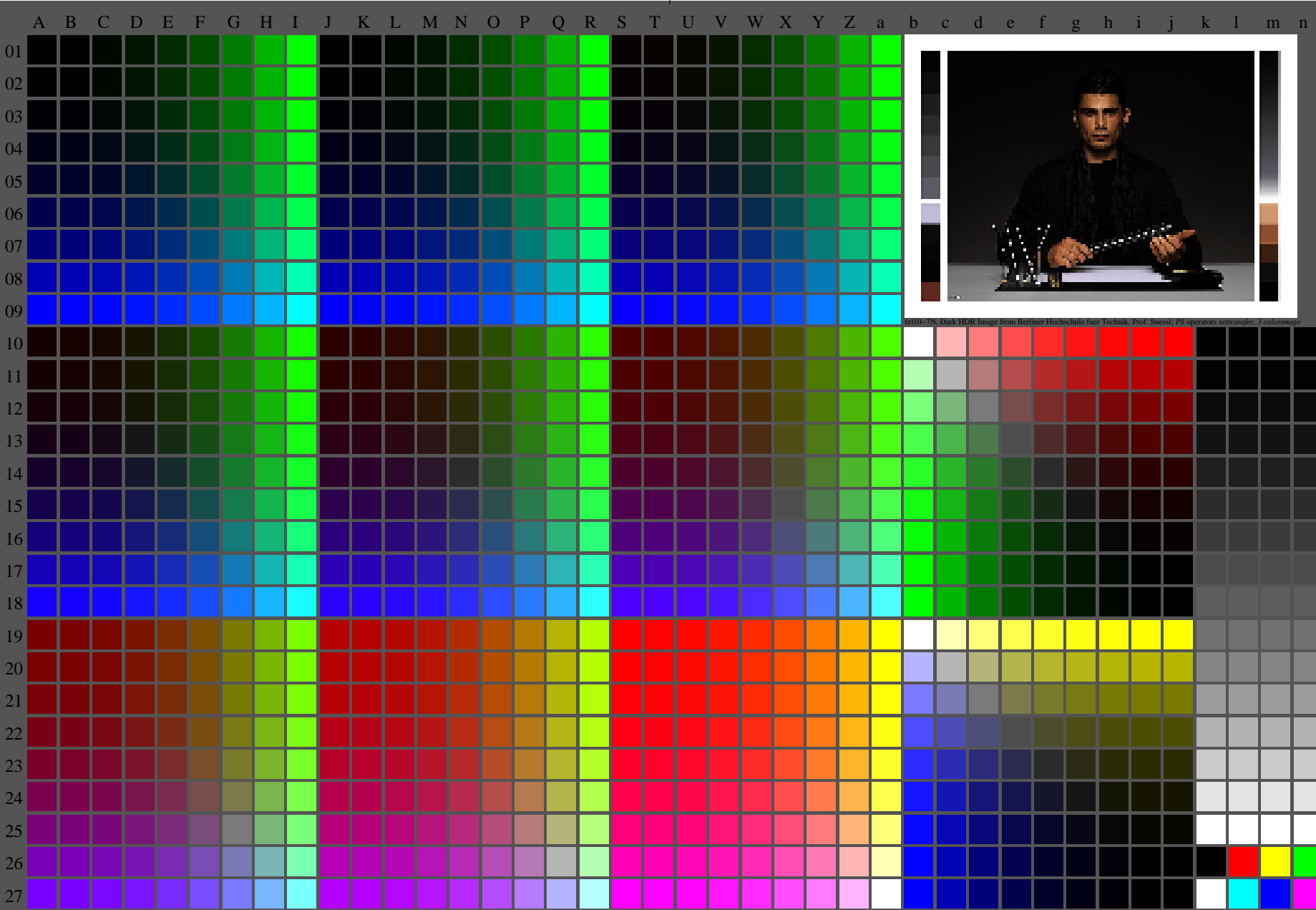
<http://farbe.li.tu-berlin.de/fel1/fel110fa.txt> /.ps; only vector graphic VG;
see separate images of this page: <http://farbe.li.tu-berlin.de/fel1/fel1.htm>



see similar files of the whole serie: <http://farbe.li.tu-berlin.de/fels.htm>
technical information: <http://farbe.li.tu-berlin.de/A/33872E.html>
or <http://standards.iso.org/iso/9241/306/ed-2/index.html>

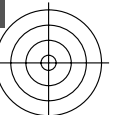
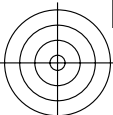
TUB registration: 20240301-fel1/fel110fa.txt /.ps
application for evaluation and measurement of display or print output

TUB material: code=rh4ta

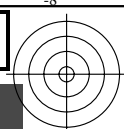
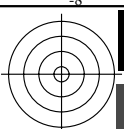


fel10-7N, Page 1/16, Test chart 2G with 40x27=1080 colours; digital equidistant 9 or 16 step colour scales; Colour data in column (A-n): $rgb^* (A_n)$, $colorm = 1$, $xchart = 40$, $pchart = 0$

TUB-test chart fel1; fel1: Test chart wl_d10 with 40x27=1080 colours; 1MR, DH 000n/w/cmy0/rgb
Digital equidistant 9 or 16 step colour scales, D-HDR; $\gamma_R=1,0$ $\rightarrow rgb^*_d, 130:0$



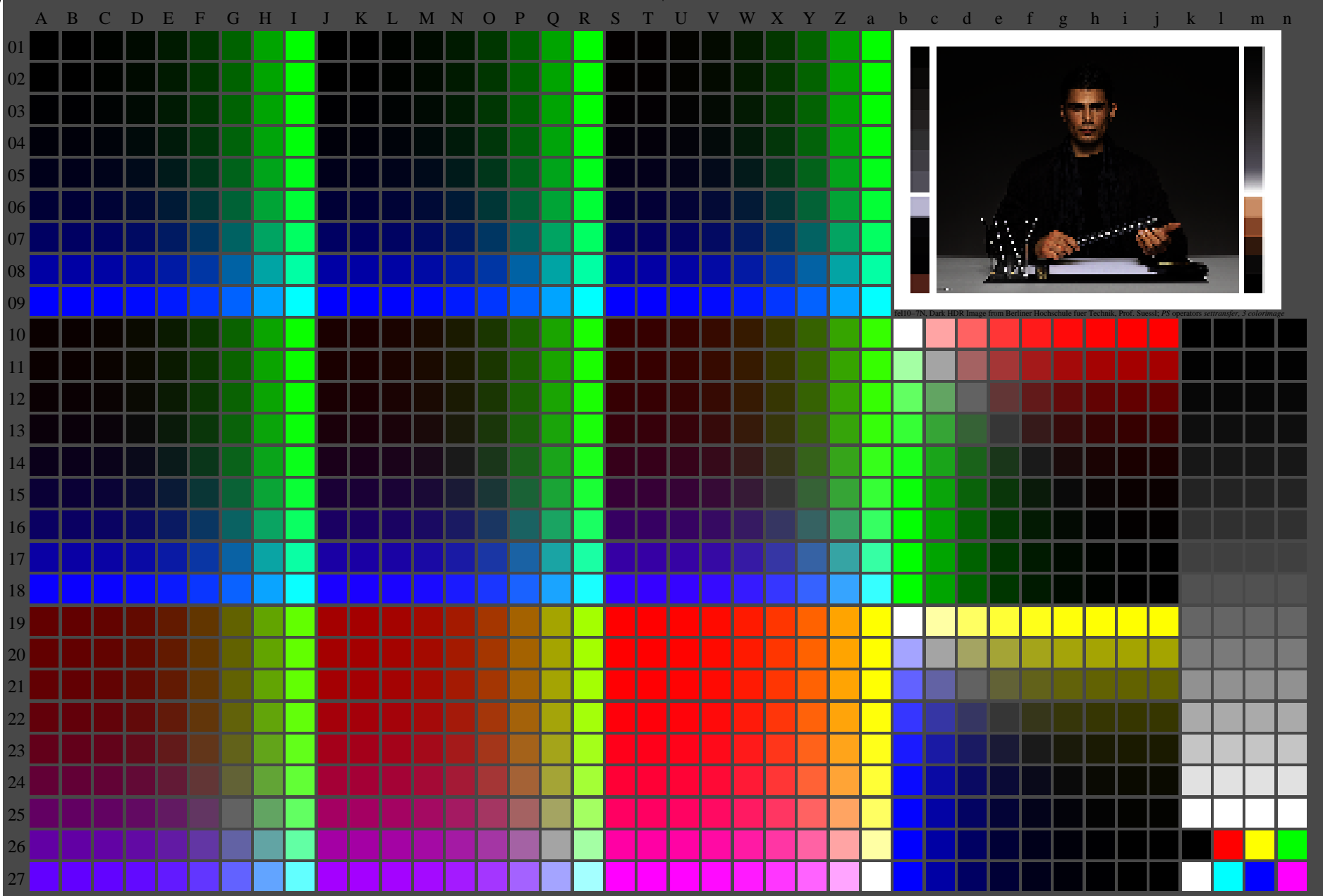
<http://farbe.li.tu-berlin.de/fel1/fel110fa.txt> /.ps; only vector graphic VG;
see separate images of this page: <http://farbe.li.tu-berlin.de/fel1/fel1.htm>



see similar files of the whole serie: <http://farbe.li.tu-berlin.de/fels.htm>
technical information: <http://farbe.li.tu-berlin.de/A/33872E.html>
or <http://standards.iso.org/iso/9241/306/ed-2/index.html>

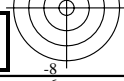
TUB registration: 20240301-fel1/fel110fa.txt /.ps
application for evaluation and measurement of display or print output

TUB material: code=rh4ta



fel10-7N, Page 1/16, Test chart 2G with 40x27=1080 colours; digital equidistant 9 or 16 step colour scales; Colour data in column (A-n): $rgb^* (A_n)$, colorm = 1, xchart = 48, pchart = 0

TUB-test chart fel1; fel1: Test chart wl_d10 with 40x27=1080 colours; 1MR, DH 000n/w/cmy0/rgb
Digital equidistant 9 or 16 step colour scales, D-HDR; $\gamma_R=1,0$ $\rightarrow rgb^*_d, 130:0$

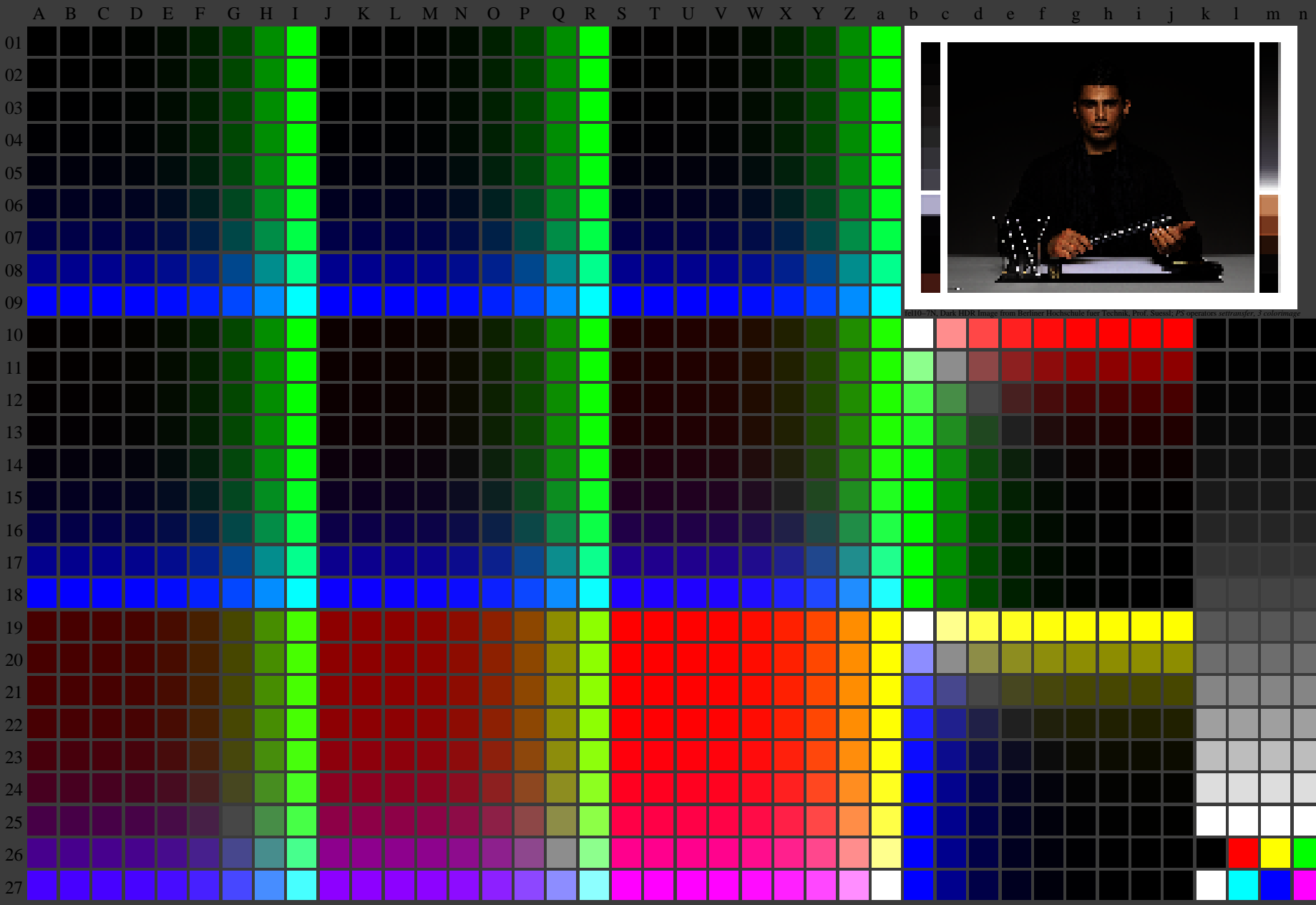


<http://farbe.li.tu-berlin.de/fel1/fel110fa.txt> /.ps; only vector graphic VG;
see separate images of this page: <http://farbe.li.tu-berlin.de/fel1/fel1.htm>

see similar files of the whole serie: <http://farbe.li.tu-berlin.de/fels.htm>
technical information: <http://farbe.li.tu-berlin.de/A/33872E.html>
or <http://standards.iso.org/iso/9241/306/ed-2/index.html>

TUB registration: 20240301-fel1/fel110fa.txt /.ps
application for evaluation and measurement of display or print output

TUB material: code=rh4ta



fel10-7N, Page 1/16, Test chart 2G with 40x27=1080 colours; digital equidistant 9 or 16 step colour scales; Colour data in column (A-n): $rgb^* (A_n)$, $colorm = 1$, $xchart = 56$, $pchart = 0$

TUB-test chart fel1; fel1: Test chart wl_d10 with 40x27=1080 colours; 1MR, DH 000n/w/cmy0/rgb
Digital equidistant 9 or 16 step colour scales, D-HDR; $\gamma_R=1,0$ $\rightarrow rgb^*_d, 130-0$