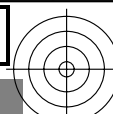
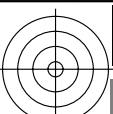


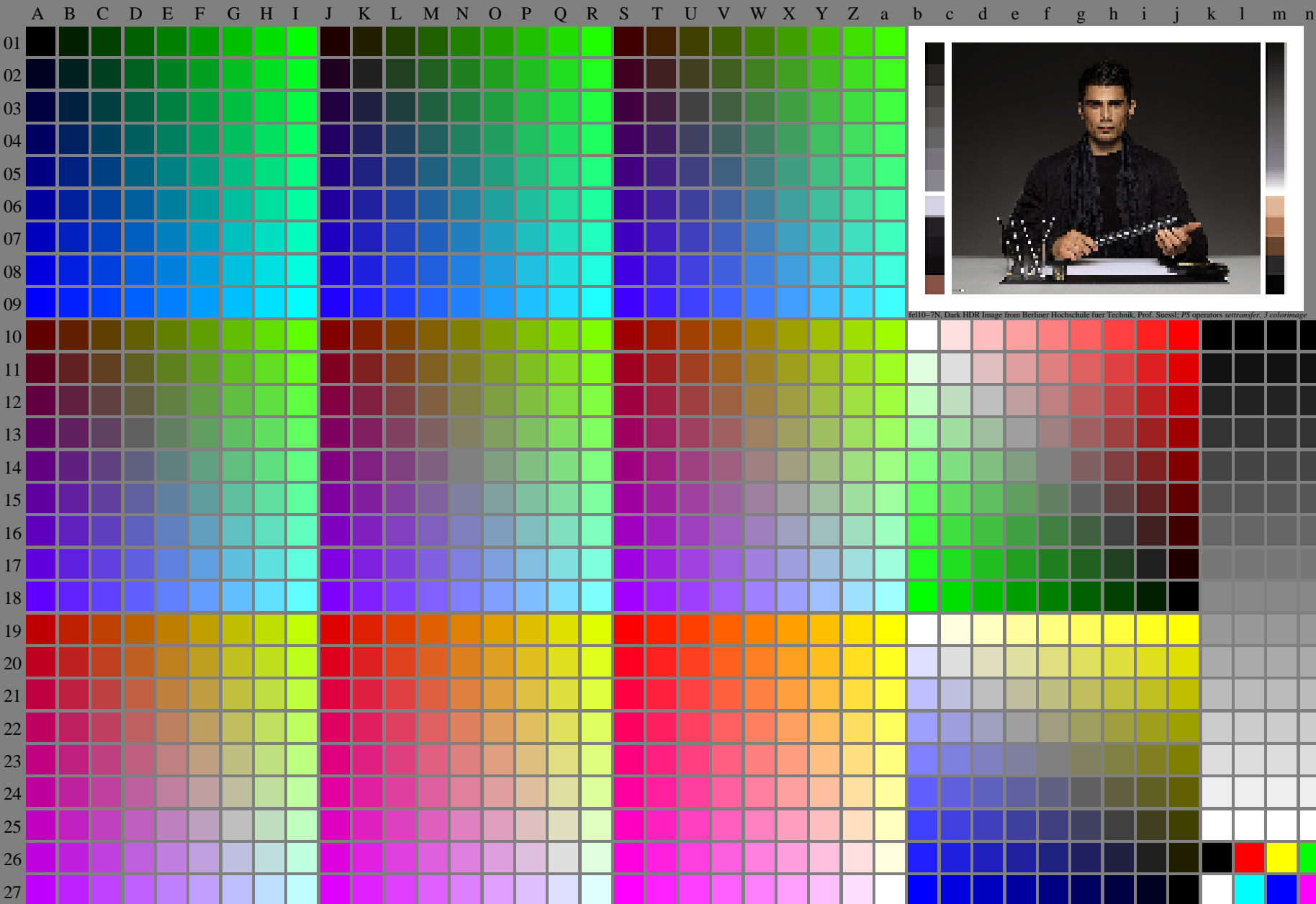
<http://farbe.li.tu-berlin.de/fel1/fel110fa.txt> /.ps; only vector graphic VG; start output
see separate images of this page: <http://farbe.li.tu-berlin.de/fel1/fel1.htm>



see similar files of the whole serie: <http://farbe.li.tu-berlin.de/fels.htm>
technical information: <http://farbe.li.tu-berlin.de/A/33872E.html>
or <http://standards.iso.org/iso/9241/306/ed-2/index.html>

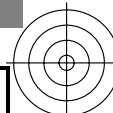
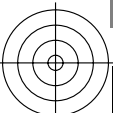
TUB registration: 20240301-fel1/fel110fa.txt /.ps
application for evaluation and measurement of display or print output

TUB material: code=rh4ta



fel10-7N, Page 1/16, Test chart 2G with 40x27=1080 colours; digital equidistant 9 or 16 step colour scales; Colour data in column (A-n): $rgb^* (A_n)$, colorm = 1, xchart = 0, pchart = 0

TUB-test chart fel1; fel1: Test chart wl_d10 with 40x27=1080 colours; 1MR, DH 000n/w/cmy0/rgb
Digital equidistant 9 or 16 step colour scales, D-HDR; $\gamma_R=1,0$
→ $rgb^*_d, 130-0$



http://farbe.li.tu-berlin.de/fell/fel110fa.txt /ps; only vector graphic VG; start output
see separate images of this page: http://farbe.li.tu-berlin.de/fell/fel1.htm

TUB registration: 20240301-fel1/fel110fa.txt /ps
application for evaluation and measurement of display or print output
TUB material: code=rhAfra

see similar files of the whole serie: http://farbe.li.tu-berlin.de/fells.htm
technical information: http://farbe.li.tu-berlin.de/A/33872E.html
or http://standards.iso.org/iso/9241/306/ed-2/index.html

A grid of 27 rows and 100 columns of color calibration data for TUB material. Each cell contains numerical values representing color components. The grid is labeled with letters A-Z and a-z on the top and bottom, and numbers 01-27 on the left and right. The data is organized into 10 groups of 10 columns each, with the first group (columns 1-10) representing the TUB material and the remaining groups representing various color calibration standards.

fel10-70, Page 2/6, Test chart G with 40x27=1080 colours; digital equidistant 9 or 16 step colour scales; Colour data in column (A-n): rgb*(A_j + k26_n27), 000n*(k), w*(l), nnn0*(m), www*(n), color=1, xchart=0, pchart=0
TUB-test chart f11; fel1: Test chart w_d10 with 40x27=1080 colours; 1MR, DH 000n/w/cmy0/rgb
Digital equidistant 9 or 16 step colour scales, D-HDR; $\gamma_R=1,0$
->rgb*d, 130:1

see similar files of the whole serie: <http://farbe.li.tu-berlin.de/fels.htm>
 technical information: <http://farbe.li.tu-berlin.de/A/33872E.htm>
 or <http://standards.iso.org/iso/9241/306/ed-2/index.html>

TUB registration: 20240301-fel1/fel110fa.txt / .ps
 application for evaluation and measurement of display or print output
 TUB material: code=rh4ta

i	LAB*ref	l*out	LAB*out	LAB*out/c-ref	ΔE^*
1	0.0	0.0	0.0	0.0	0.01
2	6.36	0.0	0.07	6.36	0.01
3	12.72	0.0	0.13	12.72	0.01
4	19.08	0.0	0.2	19.08	0.01
5	25.44	0.0	0.27	25.44	0.01
6	31.8	0.0	0.33	31.8	0.01
7	38.16	0.0	0.4	38.16	0.01
8	44.52	0.0	0.47	44.52	0.01
9	50.89	0.0	0.53	50.89	0.01
10	57.25	0.0	0.6	57.25	0.01
11	63.61	0.0	0.67	63.61	0.01
12	69.97	0.0	0.73	69.97	0.01
13	76.33	0.0	0.8	76.33	0.01
14	82.69	0.0	0.87	82.69	0.01
15	89.05	0.0	0.93	89.05	0.01
16	95.41	0.0	1.0	95.41	0.01
17	0.0	0.0	0.0	0.0	0.01
18	23.85	0.0	0.25	23.85	0.01
19	47.71	0.0	0.5	47.71	0.01
20	71.56	0.0	0.75	71.56	0.01
21	95.41	0.0	1.0	95.41	0.01

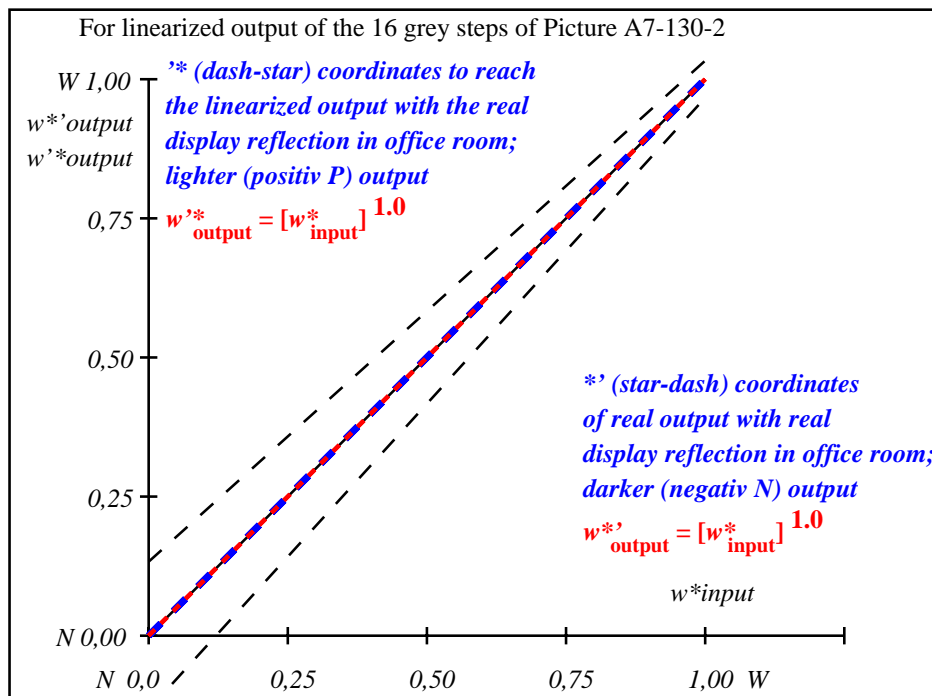
Start output S1
Specification according to ISO/IEC 15775 Annex G and DIN 33866-1 Annex G

Mean lightness difference (16 steps)
 $\Delta E^*_{CIELAB} = 0.0$

Mean lightness difference (5 steps)
 $\Delta L^*_{CIELAB} = 0.0$

Mean colour reproduction index: $R^*_{ab,m} = 100$

fel10-3N-130-2: File: Measure unknown; Device: Device unknown; Date: Date unknown



fel11-3N-130-2: File: Measure unknown; Device: Device unknown; Date: Date unknown

$L^*/Y^*_{intended}$ (absolute)	0.0/0.0	6.4/0.7	12.7/1.5	19.1/2.8	25.4/4.6	31.8/7.0	38.2/10.2	44.5/14.2	50.9/19.2	57.2/25.2	63.6/32.3	70.0/40.7	76.3/50.4	82.7/61.6	89.0/74.3	95.4/88.6
$w^* w^* w^*$ setrgb gp=1.0																
No. and Hex code	00;F	01;E	02;D	03;C	04;B	05;A	06;9	07;8	08;7	09;6	10;5	11;4	12;3	13;2	14;1	15;0
$w^* = l^*_{CIELAB, r}$ (relative)																
$w^*_{intended}$	0,000	0,067	0,133	0,200	0,267	0,333	0,400	0,467	0,533	0,600	0,667	0,733	0,800	0,867	0,933	1,000
w^*_{out}	0.0	0.067	0.133	0.2	0.267	0.333	0.4	0.467	0.533	0.6	0.667	0.733	0.8	0.867	0.933	1.0

fel10-7N-130-2: 16 visual equidistant L^* -grey steps; PS operator: $w^* w^* w^*_{setrgbcolor}$